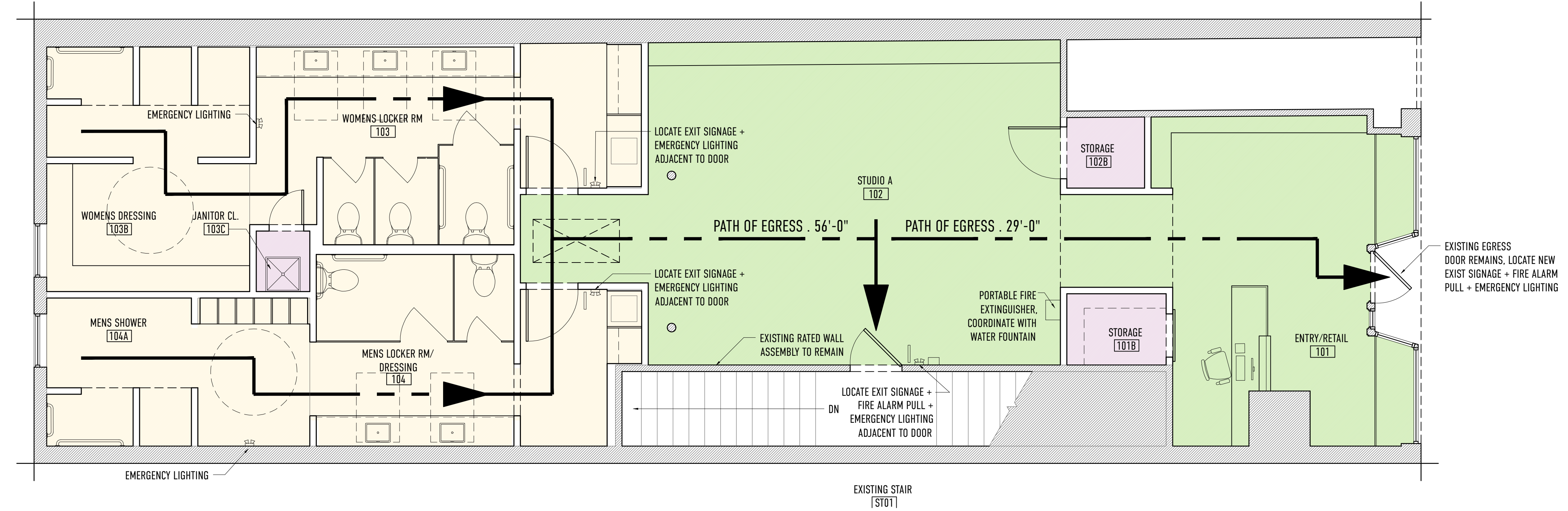


485 SF (AREA LOUNGE) + 277 SF (AREA ENTRY/RETAIL)
/ 100 SF (PP O.L. PER BUSINESS OCCUPANCY)
= 8 PEOPLE

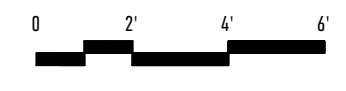
53 SF (COMBINED STORAGE/CLOSET) / 300 SF
(PP O.L. PER STORAGE/CLOSET ROOM OCCUPANCY)
= 1 PEOPLE

385 SF (AREA WOMEN'S LOCKER + DRESSING) + 310 SF (AREA MEN'S LOCKER + SHOWER)
/ 300 SF (PP O.L. PER STORAGE/CLOSET ROOM OCCUPANCY)
= 14 PEOPLE

TOTAL MAIN LEVEL OCCUPANT LOAD = 23 PEOPLE



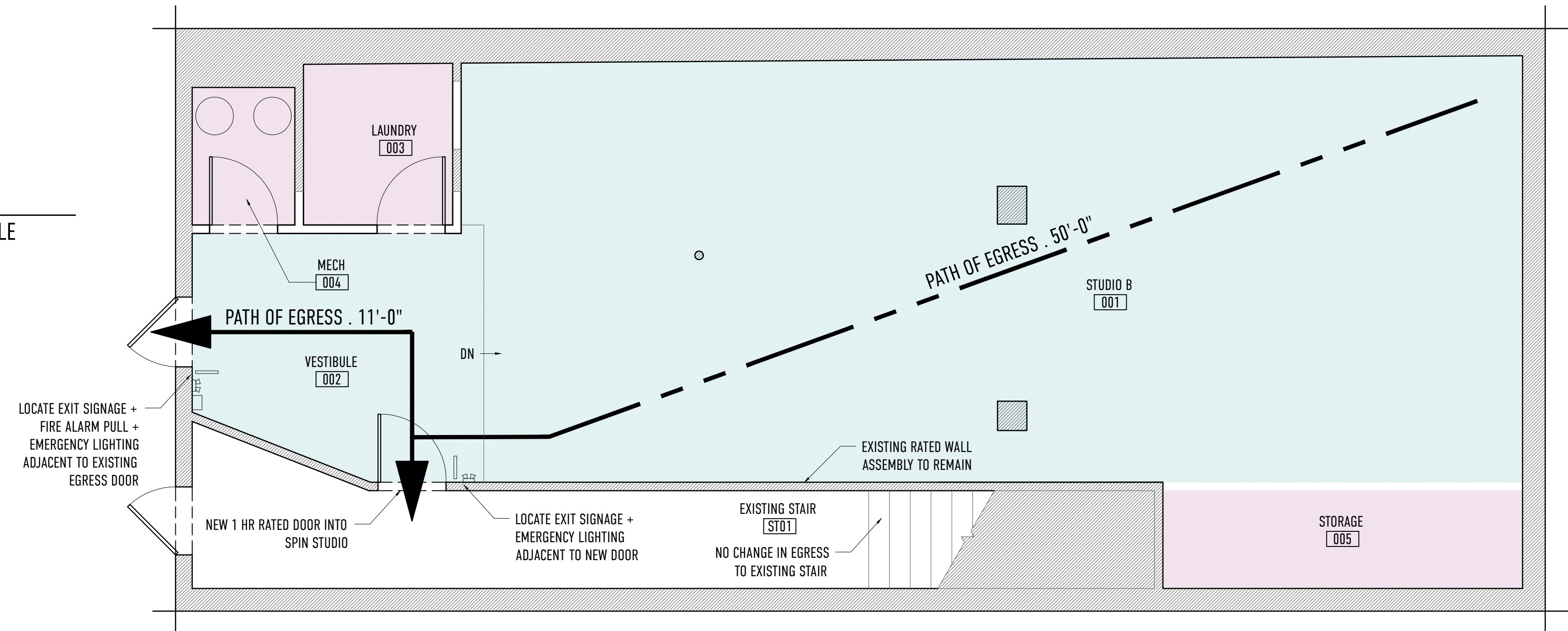
1 MAIN LEVEL - LIFE SAFETY PLAN
SCALE: 1/4" = 1'-0"



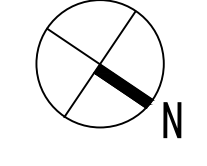
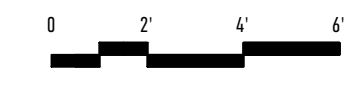
872 SF (AREA SPIN STUDIO) + 118 SF (AREA VESTIBULE)
/ 50 SF (PP O.L. PER EXERCISE ROOM OCCUPANCY)
= 20 PEOPLE

293 SF (COMBINED STORAGE/CLOSET) / 300 SF
(PP O.L. PER STORAGE/CLOSET ROOM OCCUPANCY)
= 1 PEOPLE (9 PERSON)

TOTAL LOWER LEVEL OCCUPANT LOAD = 21 PEOPLE



2 LOWER LEVEL - LIFE SAFETY PLAN
SCALE: 1/4" = 1'-0"



CODE REVIEW SUMMARY:

- OCCUPANT CLASSIFICATION: BUSINESS GROUP B (SECTION 304).
- NOTE: 303.1.1 SMALL BUILDINGS AND TENANT SPACES. A BUILDING OR TENANT SPACES USED FOR ASSEMBLY PURPOSES WITH AN OCCUPANT LOAD OF LESS THAN 50 PERSONS SHALL BE CLASSIFIED AS GROUP B OCCUPANCY.
- 304.1 BUSINESS GROUP B. PROFESSIONAL SERVICES AND TRAINING FACILITY - THIS TENANT FIT OUT CAN BE DESCRIBED AS: PERSONAL TRAINING FACILITY. AT MAX OCCUPANCY A PERSON MAY BE HAVING A SMALL CLASS SESSION WITH A TRAINER.
- PLUMBING REQUIREMENTS PER UPC TABLE 422.1

REVISIONS:

**22 FREE STREET
LIFE SAFETY FLOOR PLANS**

DRAWING TITLE:
A.001

PROJECT NAME:
JIBE STUDIO
22 FREE STREET
PORTLAND, MAINE, 04101

DATE OF ISSUE:
NOVEMBER 27, 2017

ISSUED FOR:
PERMITTING

SCALE:
1/4" = 1'-0"

**BARRETT
MADE**

HOUSES · SPACES · DETAILS

THIS DRAWING IS THE PROPERTY OF BARRETT MADE AND IS NOT TO BE COPIED OR REPRODUCED IN ANY MANNER WITHOUT THE WRITTEN CONSENT OF BARRETT MADE.