



EL RAYO - FREE STREET
 PORTLAND, MAINE
 RENOVATION

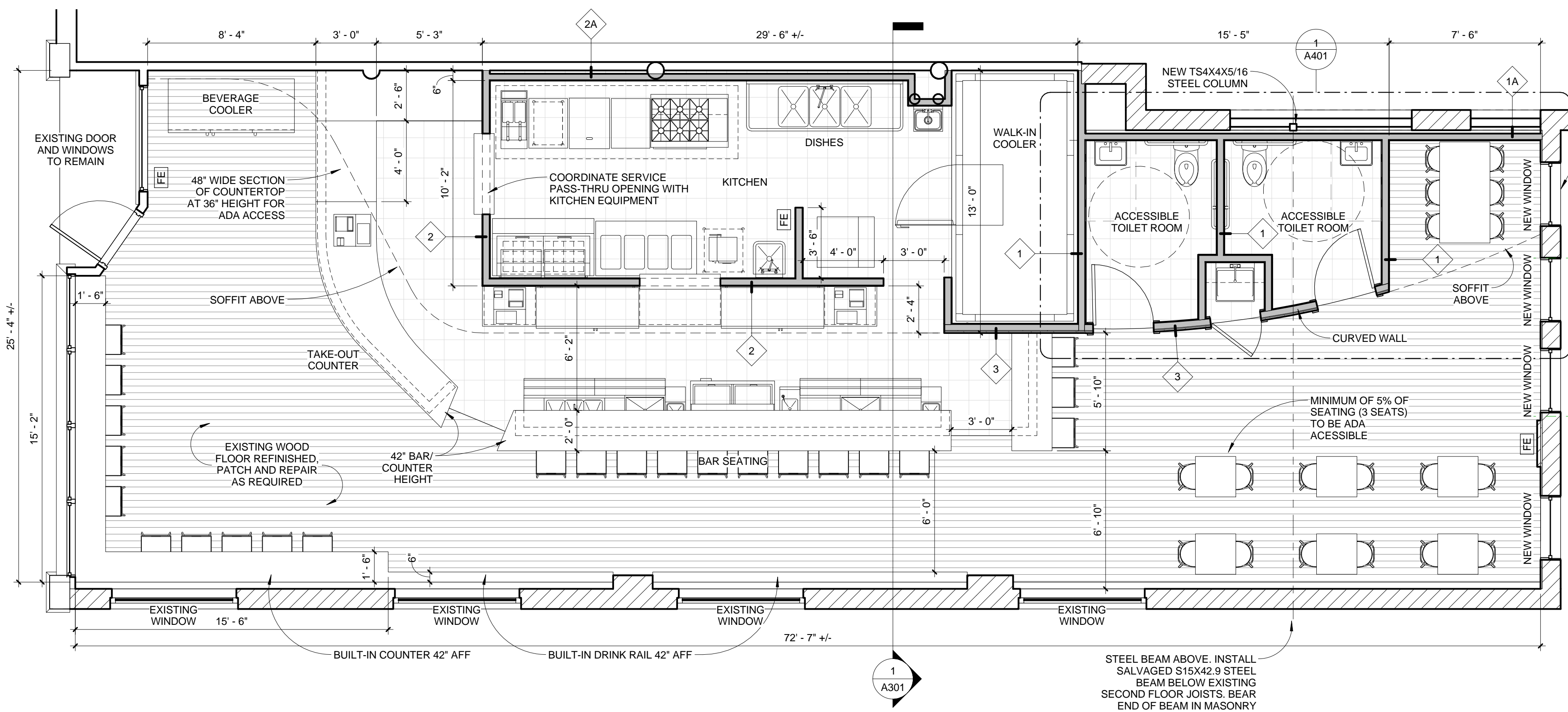
BRIBURN
 architecture for life
 20 Maple St. Suite 204 Portland, ME 04101 (207) 776-6422

CONSULTANTS:

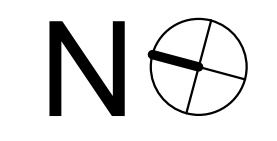
REVISIONS:

ISSUED: 03/09/16
 PROJECT No: 1523
 DRAWN BY: RIP
 CHECKED BY: RIP
 SHEET TITLE:
FLOOR PLANS & REFLECTED CEILING PLAN

A101

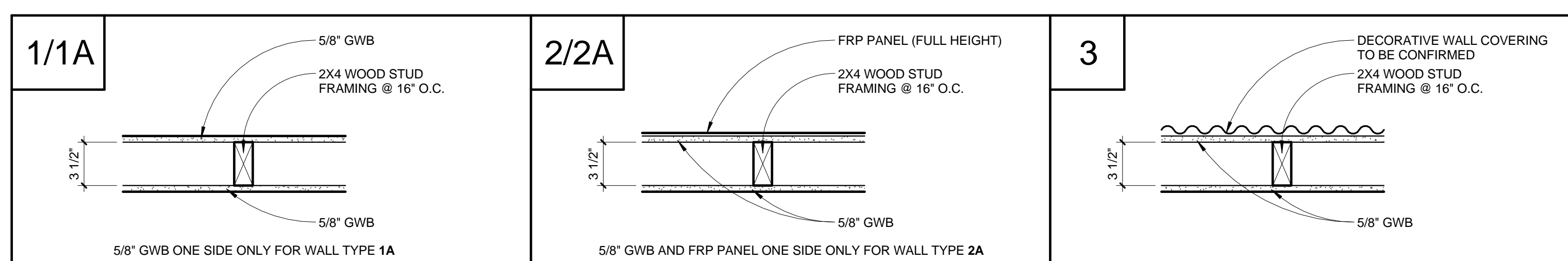


REFER TO ENLARGED ELEVATION ON SHEET A301 FOR NEW WINDOW DIMENSIONS



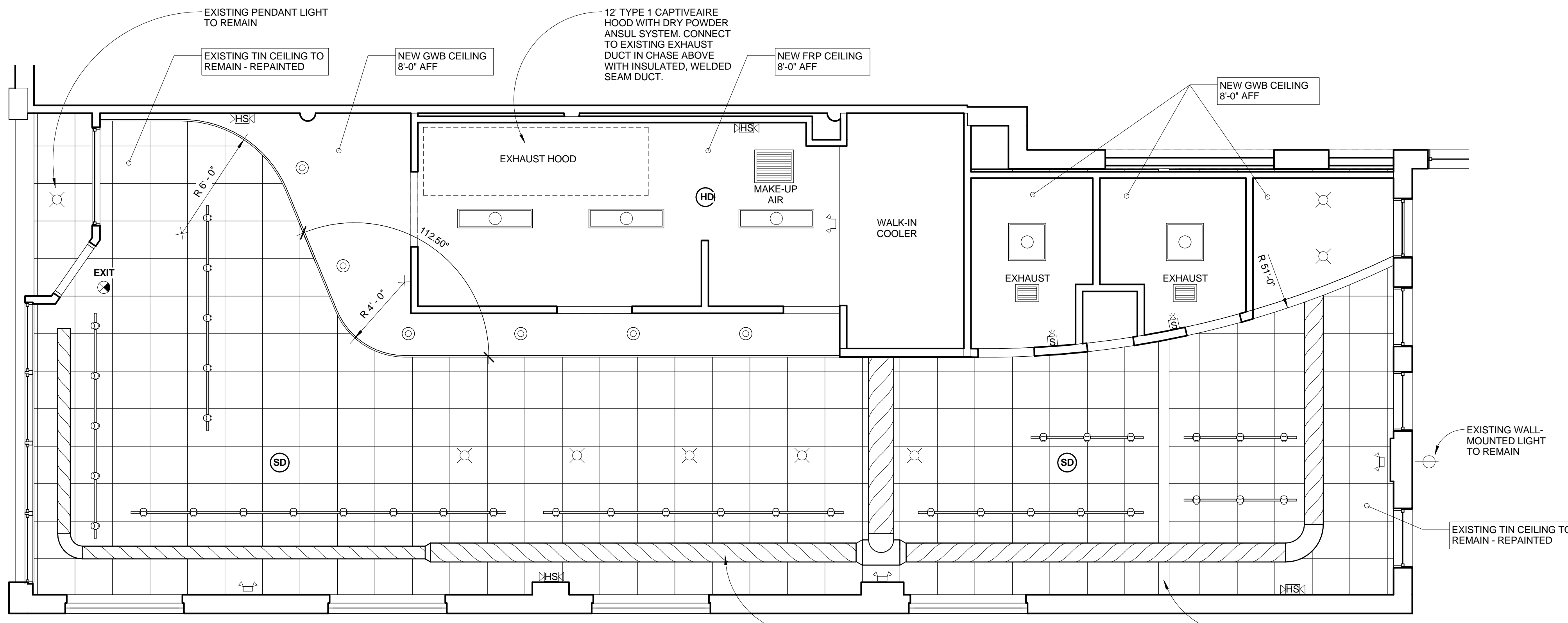
GENERAL NOTES:

- REFER TO KITCHEN EQUIPMENT DRAWINGS FS-1 THRU FS-3 FOR DETAILS ON KITCHEN EQUIPMENT, POWER AND PLUMBING REQUIREMENTS
- SEAL ALL PENETRATIONS IN WALLS, FLOOR AND CEILING BETWEEN THIS TENANT SPACE AND ADJACENT TENANT SPACES WITH FIRE-STOPPING TO REDUCE THE RISK OF THE SPREAD OF FIRE AND SMOKE.
- EXISTING SPRINKLER SYSTEM SHALL BE UPGRADED THROUGHOUT TENANT SPACE TO SUIT NEW ARRANGEMENT OF SPACES AND FOR COMPLIANCE WITH NFPA 13.
- NEW FIRE DETECTION/ALARM SYSTEM SHALL BE INSTALLED PER NFPA 101 LIFE SAFETY CODE AND NFPA 72 NATIONAL FIRE ALARM CODE REQUIREMENTS.
- EXISTING HVAC SYSTEM TO REMAIN IN PLACE WITH ADDITIONAL EXHAUST PROVIDED IN BATHROOMS CONNECTED TO EXISTING RETURN AIR. HVAC SUBCONTRACTOR TO PROVIDE TESTING AND BALANCING OF SYSTEM AND ENSURE COMPLIANCE WITH APPLICABLE CODES.
- EXISTING FLOOR, WALL AND CEILING FINISHES SHALL REMAIN. EXISTING DOORS AND WINDOWS SHALL REMAIN IN PLACE UNLESS NOTED OTHERWISE.



NOTE: PROVIDE MOISTURE RESISTANT GWB AND ACOUSTICAL BATT INSULATION AT ALL BATHROOM WALLS

WALL TYPES
 1 1/2" = 1'-0"



LIGHTING SYMBOL LEGEND			
	SURFACE MOUNTED LIGHT FIXTURE		4' SURFACE MOUNTED FLUORESCENT LIGHT FIXTURE
	RECESSED LIGHT FIXTURE		UNDER-CABINET LIGHT FIXTURE
	WALL MOUNTED LIGHT FIXTURE		PENDANT LIGHT FIXTURE
	EXHAUST FAN/LIGHT		WALL MOUNTED STRIP LIGHT
	GARAGE DOOR OPENER		CEILING FAN/LIGHT
	TRACK LIGHT SYSTEM		COMBINATION HORN/STROBE NOTIFICATION DEVICE
	ILLUMINATED EXIT SIGN		STROBE ONLY NOTIFICATION DEVICE
	EMERGENCY LIGHT PACK		SMOKE / HEAT DETECTOR

LIGHT FIXTURES TO BE SELECTED BY OWNER