



EL RAYO - FREE STREET
PORTLAND, MAINE
RENOVATION

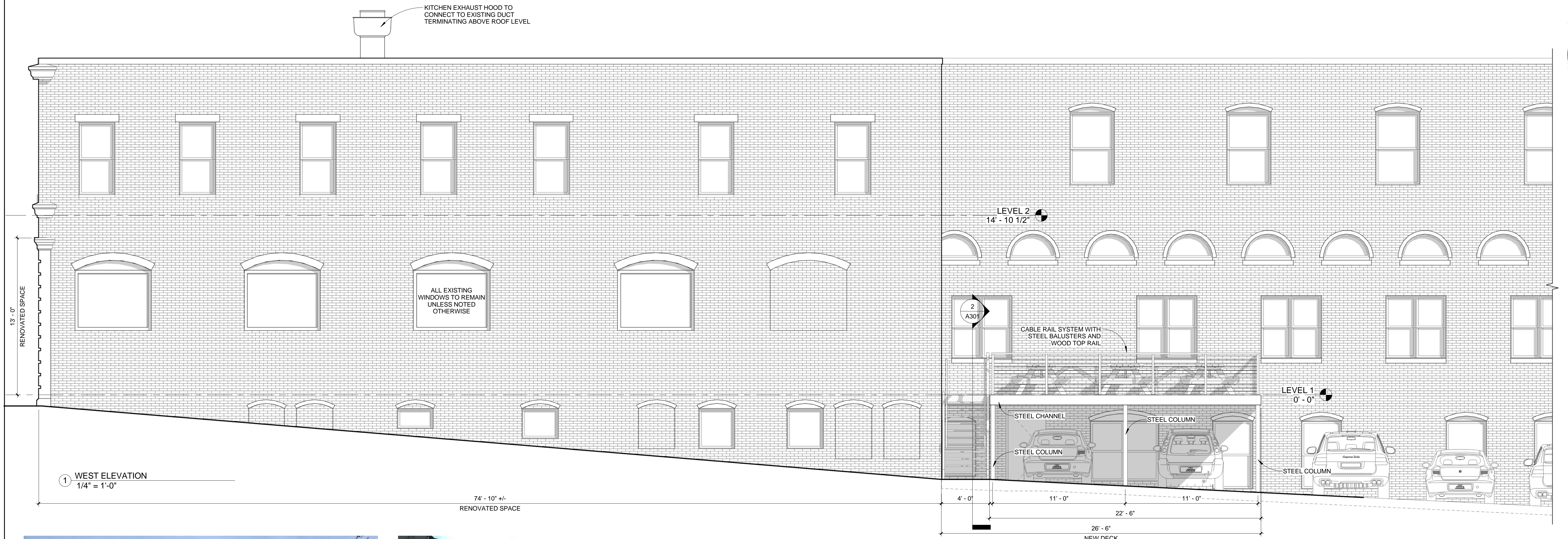
BR BURN
architecture for life
28 Maple St. Suite 202 Portland, ME 04101 207-774-8452

CONSULTANTS:

REVISIONS:

ISSUED: 01/15/16
PROJECT No: 1523
DRAWN BY: RIP
CHECKED BY: RIP
SHEET TITLE:
EXTERIOR ELEVATIONS

A201



1 WEST ELEVATION
1/4" = 1'-0"



WEST & SOUTH ELEVATION - FROM PARKING LOT

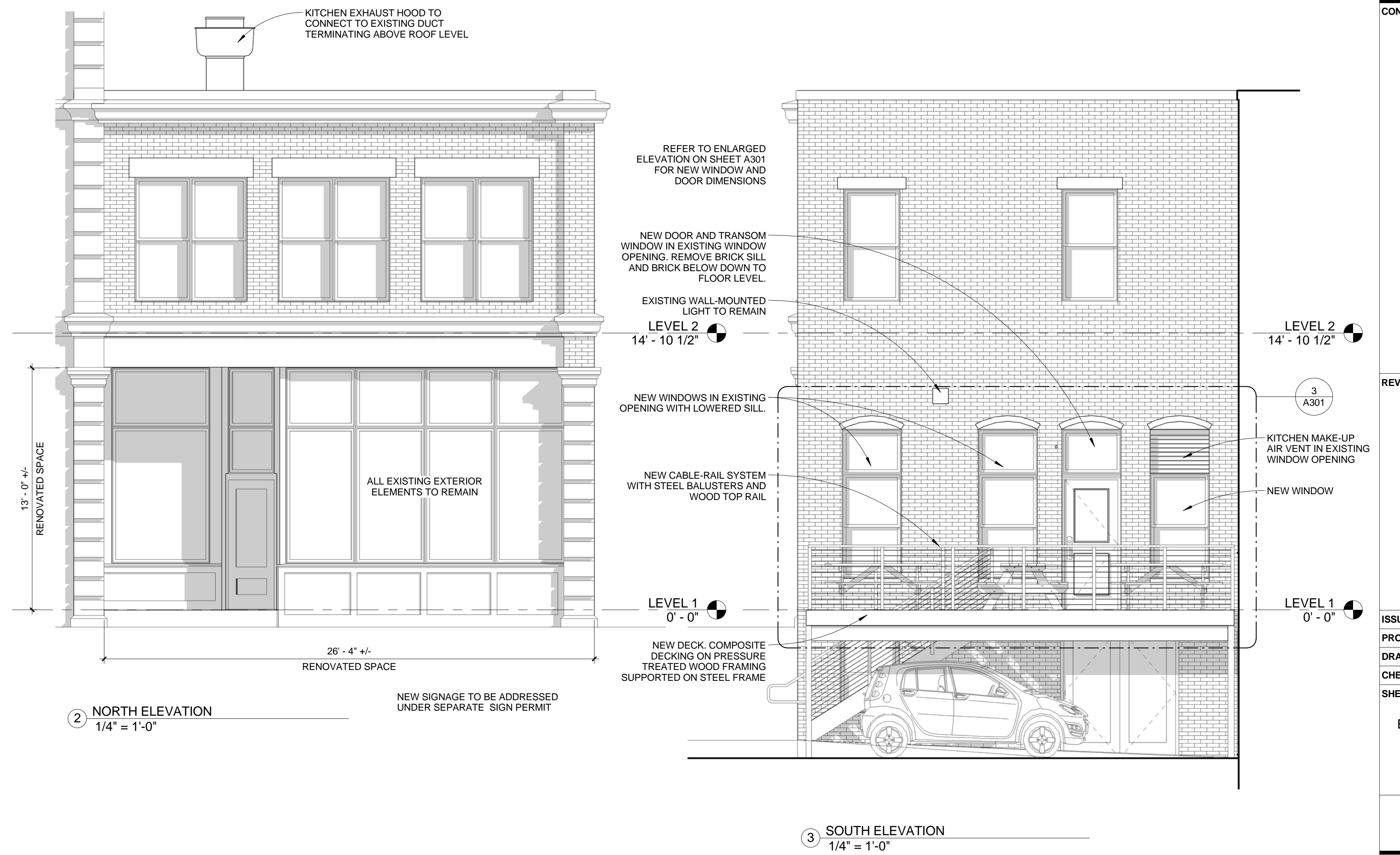


NORTH ELEVATION - FROM FREE STREET



WINDOWS TO BE REPLACED

WEST ELEVATION - FROM PARKING LOT



2 NORTH ELEVATION
1/4" = 1'-0"

3 SOUTH ELEVATION
1/4" = 1'-0"