

APPLICANT:  
 JB BROWN & SONS  
 36 DANFORTH STREET  
 PORTLAND MAINE 04101

ARCHITECT:  
 TTL-ARCHITECTS, LLC  
 28 DANFORTH STREET  
 SUITE 213  
 PORTLAND MAINE 04101

PROJECT SCOPE:  
 22 FREE STREET ALTERATION: PROJECT INVOLVES THE RELOCATION OF A TENANT SPACE ENTRY DOOR AS WELL AS RELOCATION OF BUILDING ENTRY. ALL ALTERATIONS AT FACADE HAVE BEEN PREVIOUSLY APPROVED BY THE HISTORIC REVIEW BOARD.

SQUARE FOOTAGE: NO CHANGE TO TENANT OR BUILDING FOOTPRINT. AFFECTED AREA IS LESS THAN 100 SQUARE FEET. LEVEL: PARTIAL FIRST FLOOR, TOTAL NUMBER OF STORIES IN EXISTING BUILDING: 4

DESIGN CRITERIA:  
 PROPOSED USE OF STRUCTURE:  
 NFPA 101 2009; CLASSIFICATION OF OCCUPANCY - 6.1.1.1.1 BUSINESS  
 IBC 2009; CHAPTER 3 USE AND OCCUPANCY CLASSIFICATION - SECTION 304 BUSINESS GROUP B

BUILDING CONSTRUCTION: TYPE IIIB 200, IBC; TYPE III

EXISTING FIRE PROTECTION: AUTOMATIC SPRINKLER SYSTEM, NFPA CHAPTER 9 PER NFPA 13 FULLY PROTECTED  
 SUPERVISED FIRE ALARM SYSTEM

SITE CRITERIA  
 EXISTING BUILDING

APPLICABLE CODES  
 IBC 2009 NFPA 45  
 NFPA 2009 MAINE STATE PLUMBING CODE  
 NFPA 13 MAINE HUMAN RIGHTS ACT  
 ADA/ADAAG GUIDELINES

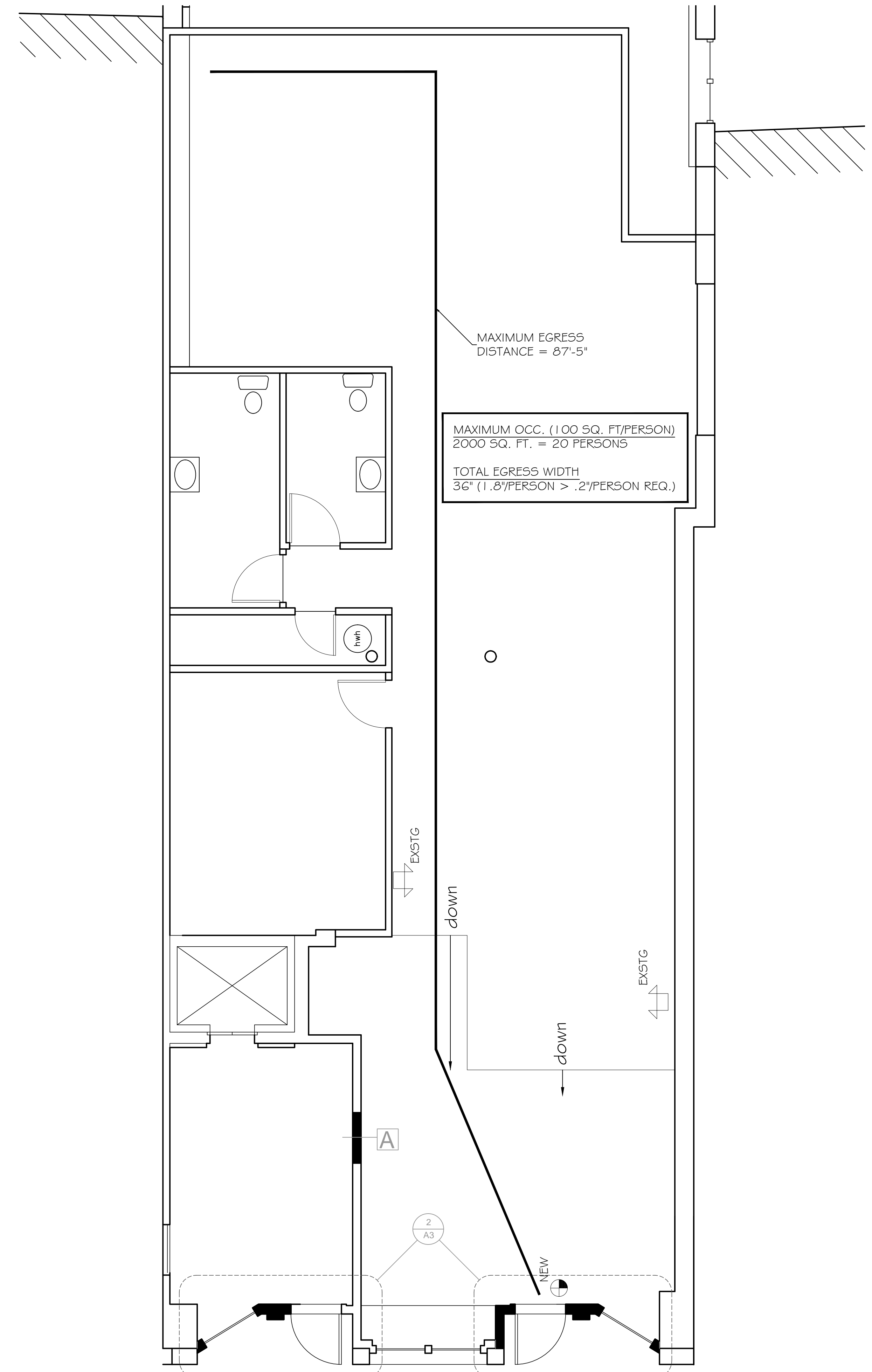
NFPAA 101 CODE SUMMARY  
 CLASSIFICATION OF OCCUPANCY: BUSINESS - CHAPTER 39 - EXISTING BUSINESS

SEPARATED OCCUPANCY 6.1.1.4.4.1B BUSINESS WHERE BUILDING PROTECTED THROUGHOUT BY AUTOMATIC SPRINKLER SYSTEM 6.1.1.4.4.3 ALLOWS 1 HOUR SEPARATION

OCCUPANT LOAD: ALL OCCUPANT LOADS REMAIN UNCHANGED THROUGHOUT BUILDING

MEANS OF EGRESS: EGRESS PATH AND DISTANCE FOR BUILDING ENTRANCE REMAINS UNCHANGED

ELEVATOR: EXISTING

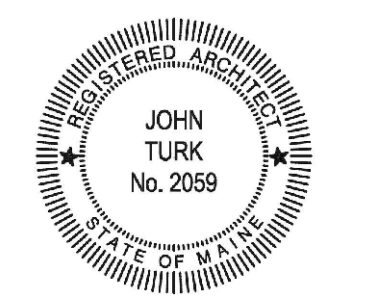


MAXIMUM EGRESS DISTANCE = 87'-5"

MAXIMUM OCC. (100 SQ. FT./PERSON)  
 2000 SQ. FT. = 20 PERSONS  
 TOTAL EGRESS WIDTH  
 36" (1.8"/PERSON > .2"/PERSON REQ.)

1 EGRESS PLAN 22 Free Street  
 A-2 1/4" = 1'-0"

tll-architects, llc  
 28 DANFORTH STREET  
 SUITE 213  
 PORTLAND, MAINE 04101  
 TEL: 207.761.9662  
 FAX: 207.761.9696



Storefront Restoration & Lobby Renovations  
**22 Free Street**  
 J. B. Brown & Sons  
 Portland, Maine

Date: 15 OCT 2015  
 Scale: As Shown  
 Revisions:

Title:  
 Code Analysis

Sheet No: **LS-1**