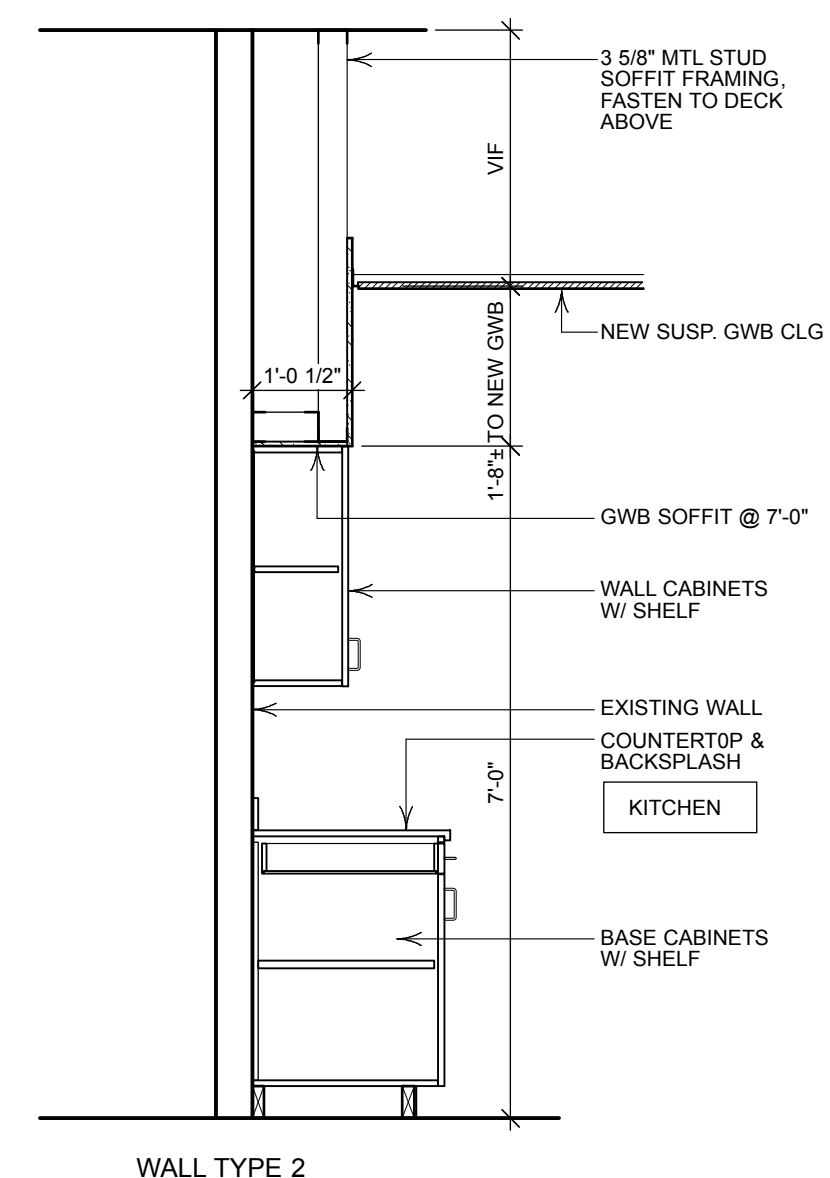
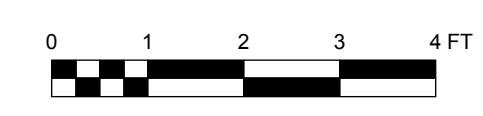
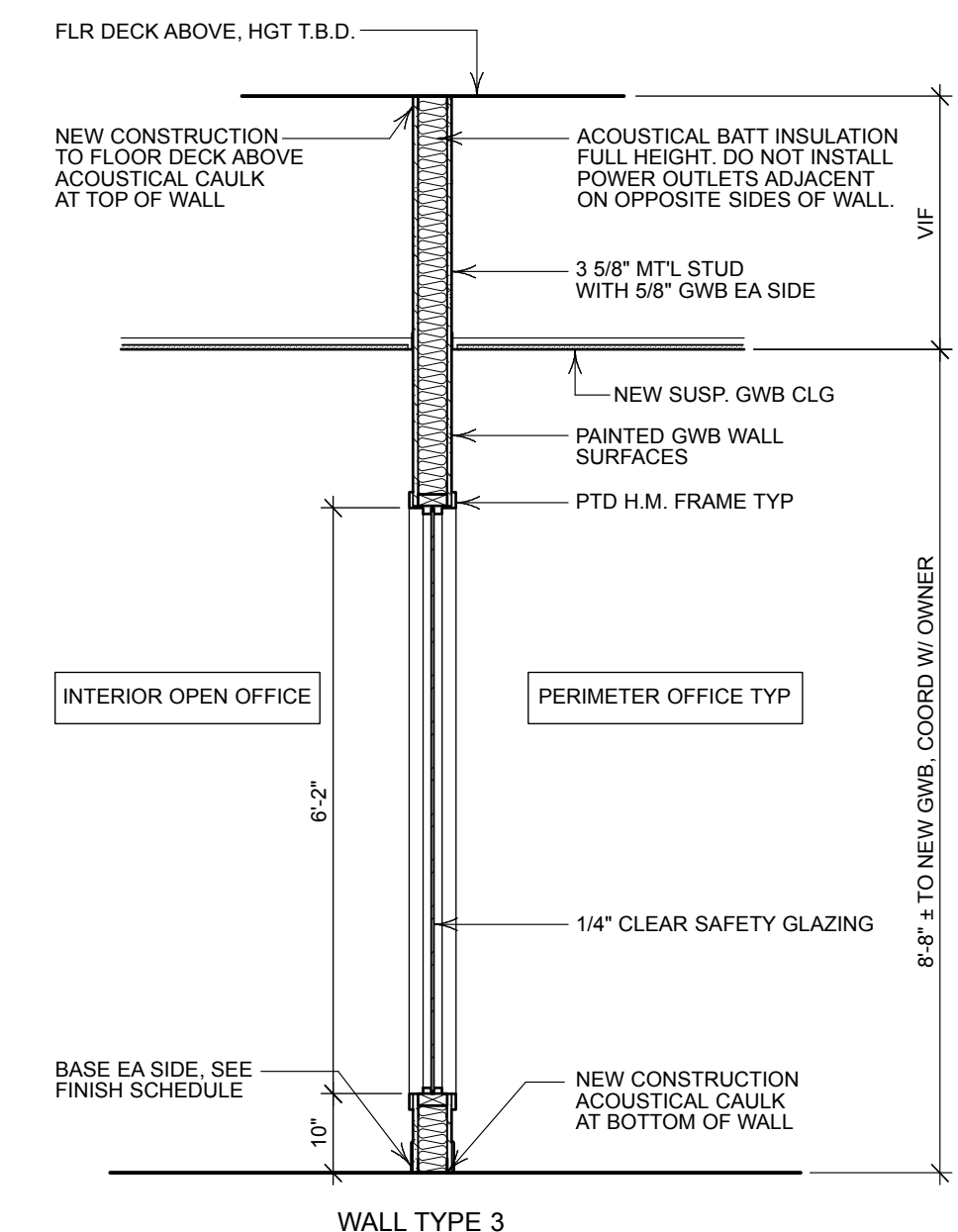


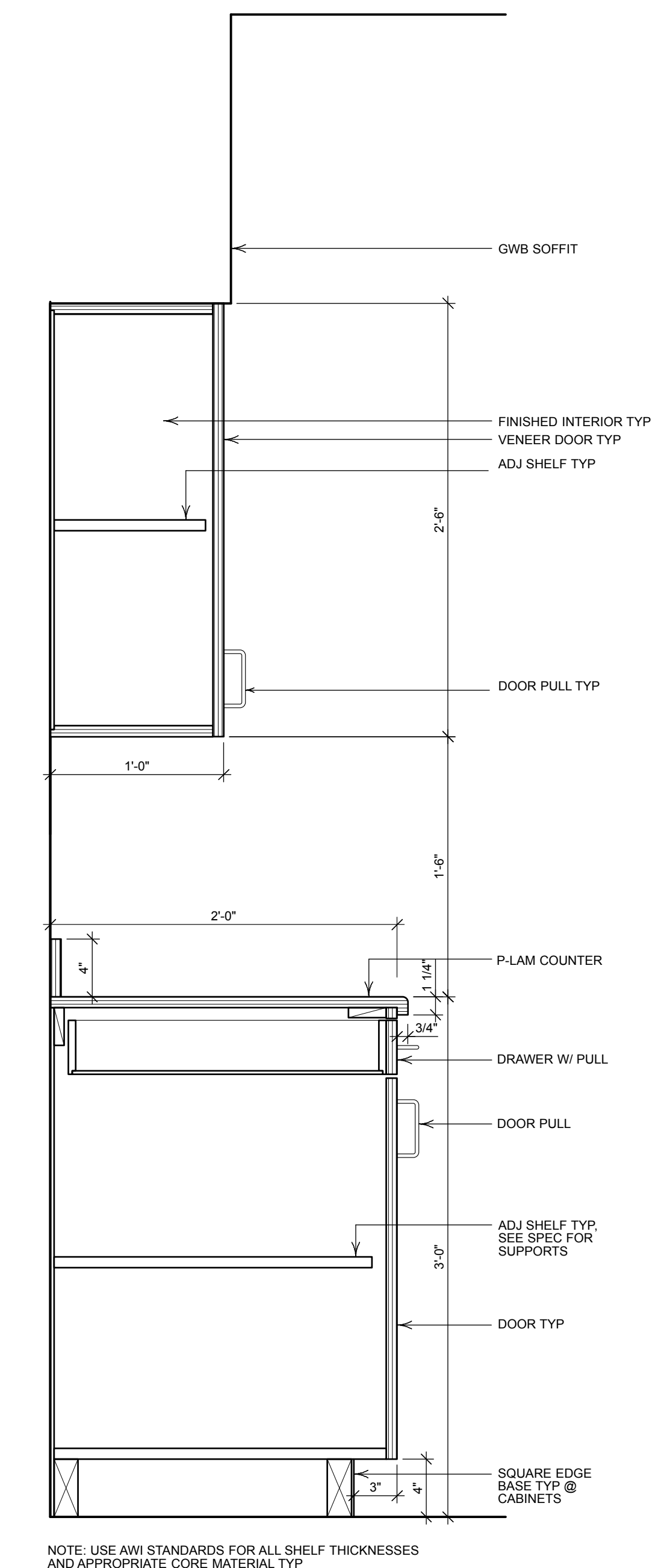
2 FULL WALL SECTION TYP
Scale: 1/2" = 1'-0"



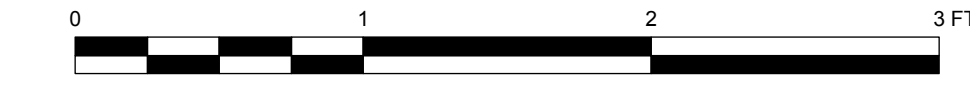
3 WALL SECTION @ KITCHEN
Scale: 1/2" = 1'-0"



4 WALL SECTION W/ GLASS
Scale: 1/2" = 1'-0"



1 KITCHEN UPPER & LOWER CABINETS
Scale: 1 1/2" = 1'-0"



NOTE: USE AWI STANDARDS FOR ALL SHELF THICKNESSES AND APPROPRIATE CORE MATERIAL TYP

| | |
|----------------|---|
| Appr | |
| Zone | |
| Revision Notes | |
| Date | |
| No. | |
| 1 | 8/25/15 For Construction Permit Issue Notes |



| | |
|-----------------|--------------------|
| Designed By | 8/25/15 |
| Drawn By | |
| Checked By | 2015099 |
| Reviewed By | JBB 22 Free St.vwx |
| Submitted By | JBB 22 Free St.vwx |
| Project Manager | |

HKTA/architects
30 Danforth Street
Portland, Maine 04101

22 Free St Renovations
J.B. Brown & Sons
Portland, Maine

WALL SECTIONS
MILLWORK DETAILS

Scale Sheet Scale
Drawing No. A-301
8 Total Sheets