

Fire and Egress data: (Existing Building):

Applicant: Free Street Associates, LLC
 PO Box 7525
 Portland, ME 04112

Project Architect: None.

Sprinklers: Existing Building has a monitored - full coverage - wet sprinkler system - to NFPA.

2nd Floor Occupancy: Existing Business.

All work to be in compliance with all applicable codes and ordinances.

Fire Extinguishers to be 2A capacity minimum and wall mounted at 36" AFF.

MAXIMUM COMMON PATH OF TRAVEL SHOWN WITH DASHED LINE (---);
 MAXIMUM ALLOWABLE DISTANCE = 100 LIN FT.
 MAXIMUM DISTANCE SHOWN = 99 FT

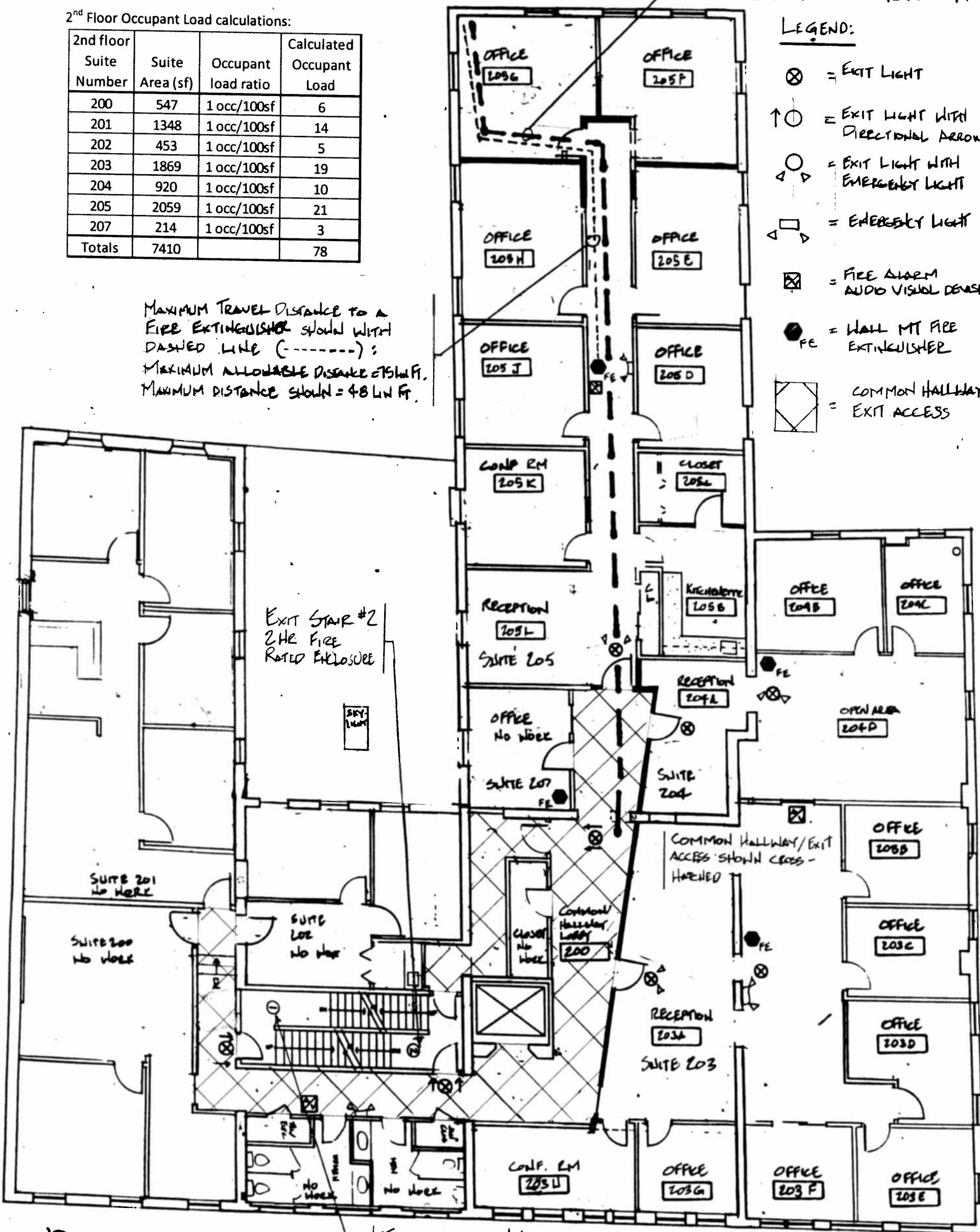
2nd Floor Occupant Load calculations:

2nd floor Suite Number	Suite Area (sf)	Occupant load ratio	Calculated Occupant Load
200	547	1 occ/100sf	6
201	1348	1 occ/100sf	14
202	453	1 occ/100sf	5
203	1869	1 occ/100sf	19
204	920	1 occ/100sf	10
205	2059	1 occ/100sf	21
207	214	1 occ/100sf	3
Totals	7410		78

MAXIMUM TRAVEL DISTANCE TO A FIRE EXTINGUISHER SHOWN WITH DASHED LINE (-----);
 MAXIMUM ALLOWABLE DISTANCE 75 LIN FT.
 MAXIMUM DISTANCE SHOWN = 48 LIN FT.

LEGEND:

- ⊗ = EXIT LIGHT
- ↑ ⊗ = EXIT LIGHT WITH DIRECTIONAL ARROWS
- ⊙ = EXIT LIGHT WITH EMERGENCY LIGHT
- ⊙ ⊙ = EMERGENCY LIGHT
- ⊗ ⊗ = FIRE ALARM AUDIO VISUAL DEVICE
- FE = WALL MT FIRE EXTINGUISHER
- ⊠ = COMMON HALLWAY/EXIT ACCESS



2ND FLOOR PLAN

3/32" = 1'-0"

EXIT STAIR #1
 2 HR FIRE RATED ENCLOSURE

22ND FREE STREET

FIRE AND EGRESS DATA PLAN
 SUITES 203 204 & 205

REVISIONS:
 LS-1
 7/11/12