

GENERAL NOTES

SPRINKLER SYSTEM INSTALLATION TO COMPLY WITH NFPA 13(2013).

SCOPE OF WORK:
 REWORK EXISTING PIPE SCHEDULED WET SPRINKLER SYSTEM TO ACCOMMODATE NEW WALL AND CEILING LAYOUT FOR NEW 4 FREE STREET TENANT TO LIMIT OF WORK. SPRINKLER PROTECTION IN ALL OTHER PORTIONS OF THE BUILDING TO REMAIN AS IS.

OCCUPANCY DESCRIPTION AND CLASSIFICATION:
 LIGHT HAZARD = ENTRANCE, BATH ROOMS, OFFICE, EGRESS STAIRS, BAR, ORDINARY HAZARD GROUP 1 = STORAGE, KITCHEN, MECH ROOM.

BRANCH LINE PIPING TO BE BLACK STL SCH10 40 JOINED BY THREADED DUCTILE IRON FITTINGS.

MAN PIPING TO BE BLACK STL SCH10 WITH GROoved ENDS AND WELDED OUTLETS JOINED BY MECHANICAL COUPLINGS.

ALL DIMENSIONS ARE SHOWN FOR GENERAL LOCATION OF SPRINKLER HEADS :

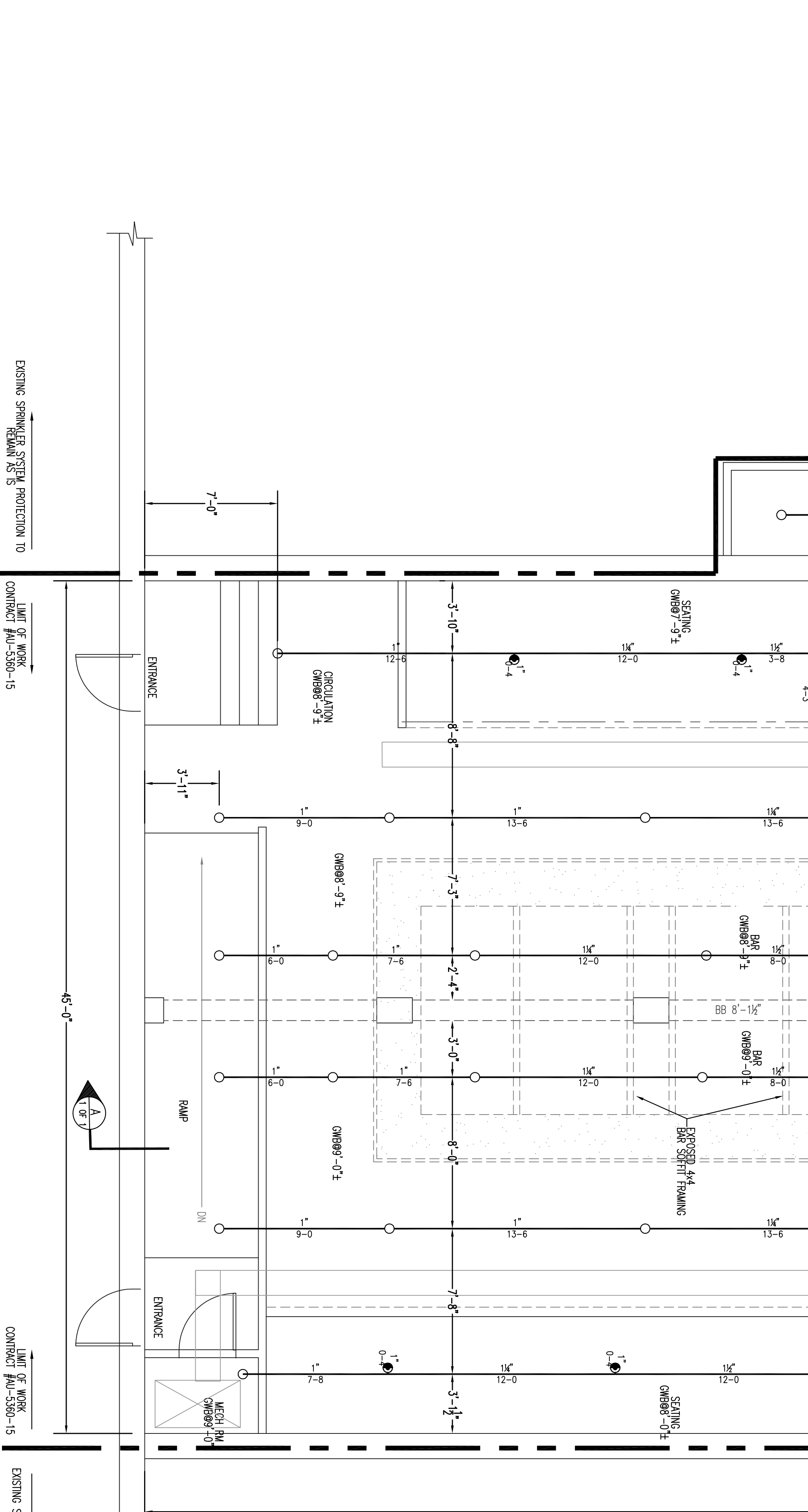
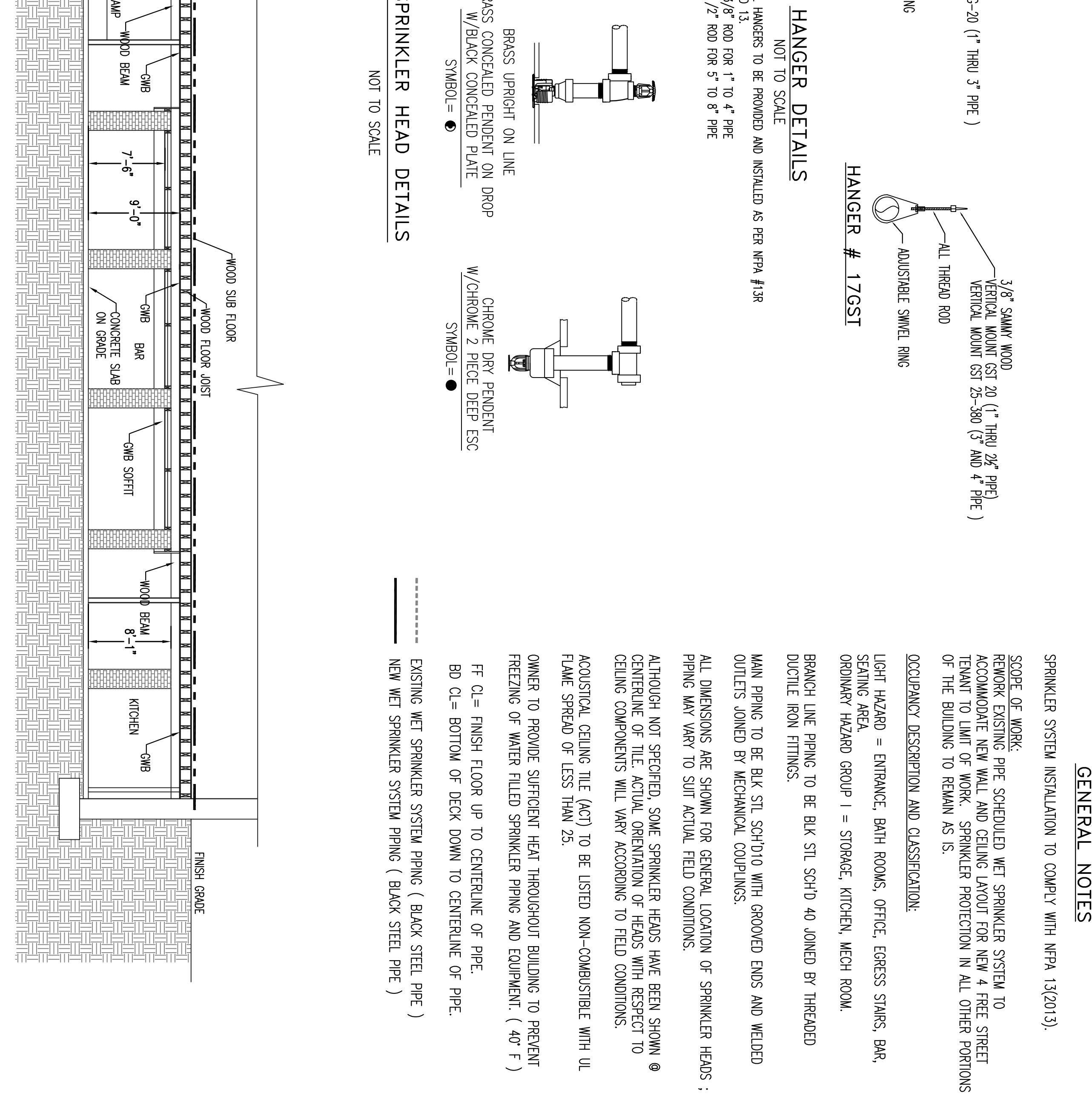
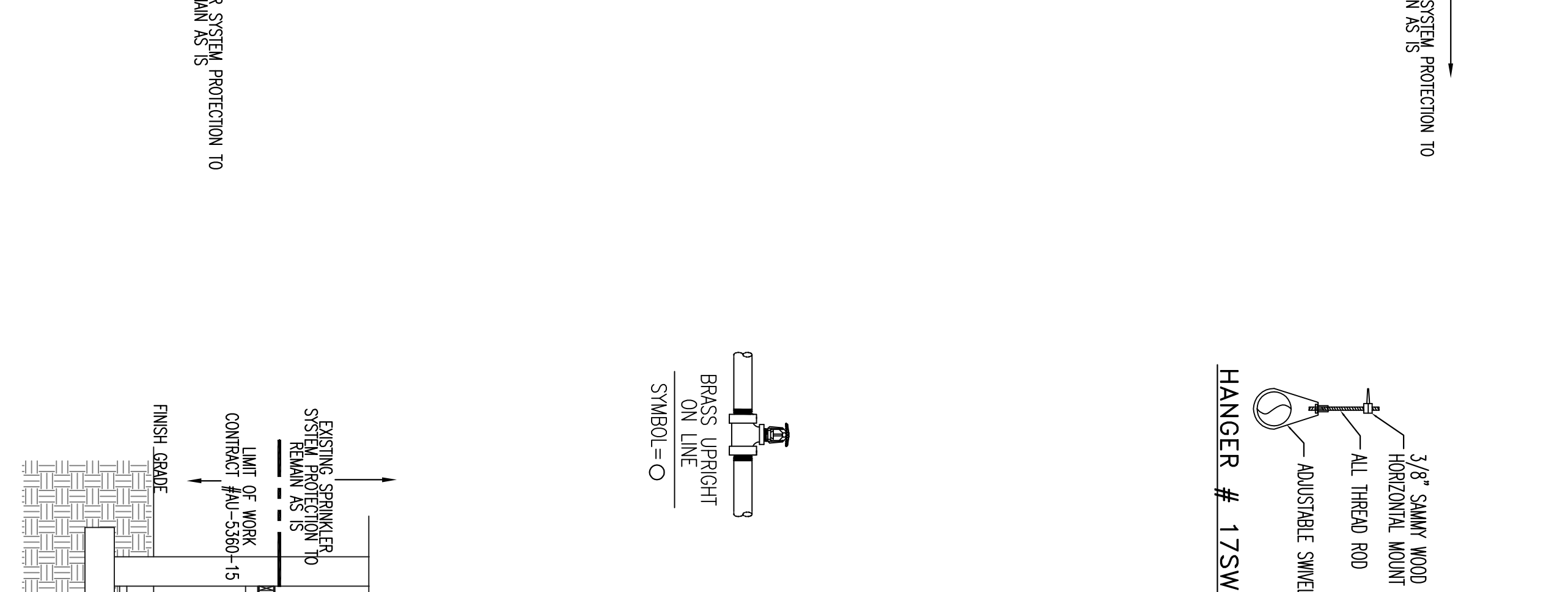
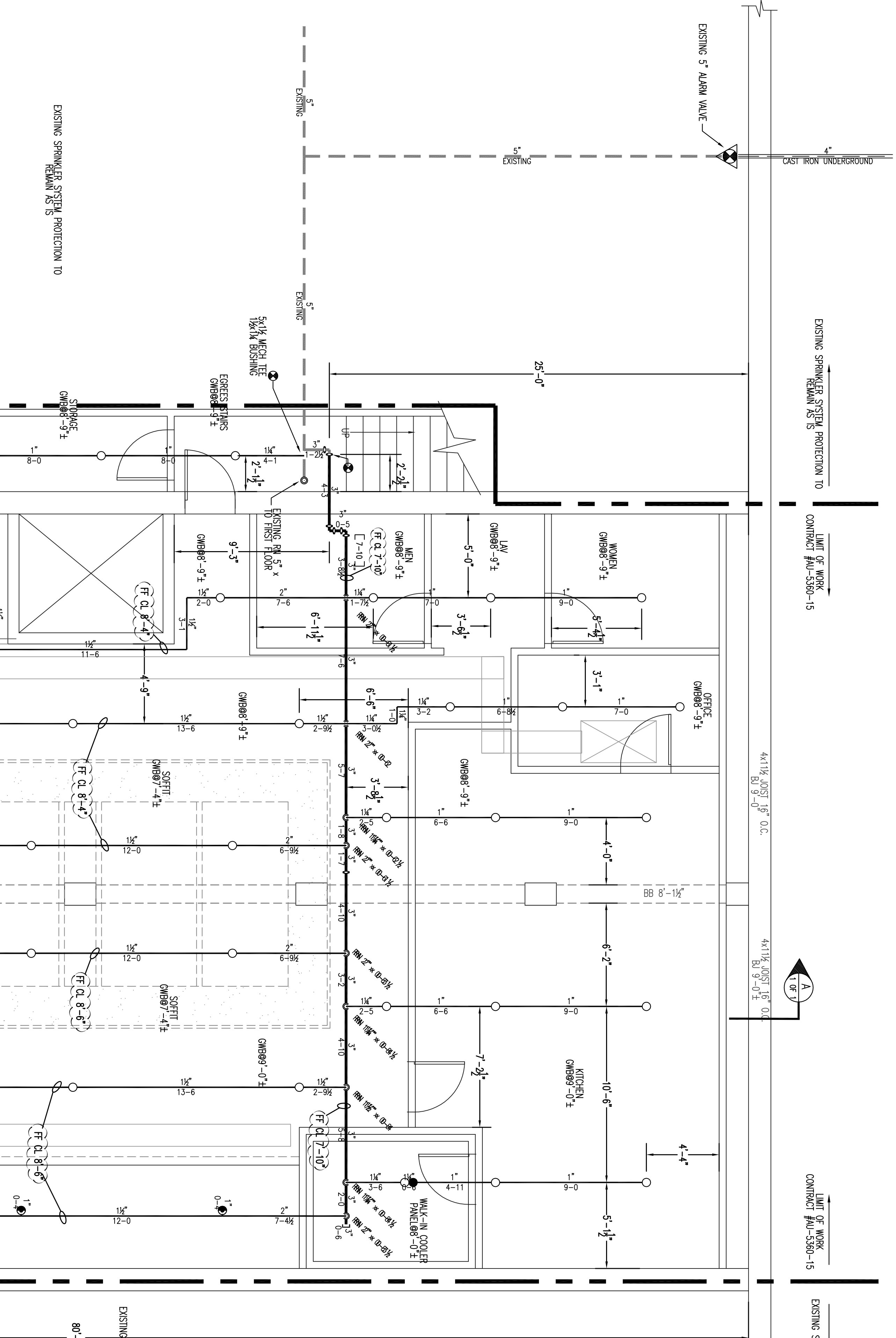
ALTHOUGH NOT SPECIFIED, SOME SPRINKLER HEADS HAVE BEEN SHOWN WITH CENTERLINE OF TILE. ACTUAL ORIENTATION OF HEADS WITH RESPECT TO CEILING COMPONENTS WILL VARY ACCORDING TO FIELD CONDITIONS.

ADJUSTABLE CEILING TILE (ACT) TO BE LISTED NON-COMBUSTIBLE WITH UL FLAME SPREAD OF LESS THAN 25.

OWNER TO PROVIDE SUFFICIENT HEAT THROUGHOUT BUILDING TO PREVENT FREEZING OF WATER FILLED SPRINKLER PIPING AND EQUIPMENT. (40° F)

FD CL = FINISH FLOOR UP TO CENTERLINE OF PIPE.
 BD CL = BOTTOM OF DECK DOWN TO CENTERLINE OF PIPE.

EXISTING WET SPRINKLER SYSTEM PIPING (BLACK STEEL PIPE)
 NEW WET SPRINKLER SYSTEM PIPING (BLACK STEEL PIPE)



Sprinkler Head Schedule

Symbol	Count	Thread	SIW#	K-FACTOR	TEMP	Description	Note
⊙	6	1/2"	RAA413	5.6	212°/150°	RELIABLE GS-36 CONCEALED PENDENT W/BLACK COVER PLATE	ON DROP/BELOW ON LINE/ABOVE
○	43	1/2"	RA1423	5.6	200°	RELIABLE FTFR 56 BRASS UPRIGHT	ON LINE
●	1	1"	RA6714	5.6	200°	RELIABLE F30R CHROME BRZ PENDENT W/CHROME 2 PCEE DEEP ESCUTCHION	ON DROP

56 = Total Number of New Heads to Limit of Work Only

FIRE SPRINKLER PLAN - BASEMENT

SCALE: 1/4"=1'-0"
 AREA PROTECTED: 3,745 SQ. FT.
 FINISH FLOOR ELEVATION: 100.00'
 COLOR CODE: WHITE

TOTAL AREA PROTECTED AND HEAD COUNT TO LIMIT OF WORK ONLY.

GENERAL NOTES	DATE	REVISIONS	REQUIRED APPROVALS	CONTRACT WITH: OWNER	FIRE SPRINKLER PLANS & DETAILS
SPRINKLER SYSTEM INSTALLATION TO COMPLY WITH NFPA PARAGRAPH # 13 BRANCH LINE PIPING TO BE BLACK SCHEDULE 40 JOINED BY THREADED DUCTILE IRON FITTINGS MAIN PIPING TO BE SCHEDULE # 10 BLACK WITH GROOVED ENDS & WELDED OUTLETS JOINED BY MECHANICAL COUPLINGS OWNER TO PROVIDE SUFFICIENT HEAT THROUGHOUT BUILDING TO PREVENT FREEZING OF WATER FILLED SPRINKLER PIPING AND EQUIPMENT. (MIN 40° F)	8-31-15		OWNER / ARCHITECT STATE FIRE MARSHAL PORTLAND FIRE DEPARTMENT	4 FREE STREET 4 FREE STREET, PORTLAND, ME	PLANS & DETAILS DWG. NO. 1 OF 1 JOB NUMBER AU-5380-15 SCALE AS NOTED DATE 8/28/15

GENERAL NOTES	DATE	REVISIONS	REQUIRED APPROVALS	CONTRACT WITH: OWNER	FIRE SPRINKLER PLANS & DETAILS
SPRINKLER SYSTEM INSTALLATION TO COMPLY WITH NFPA PARAGRAPH # 13 BRANCH LINE PIPING TO BE BLACK SCHEDULE 40 JOINED BY THREADED DUCTILE IRON FITTINGS MAIN PIPING TO BE SCHEDULE # 10 BLACK WITH GROOVED ENDS & WELDED OUTLETS JOINED BY MECHANICAL COUPLINGS OWNER TO PROVIDE SUFFICIENT HEAT THROUGHOUT BUILDING TO PREVENT FREEZING OF WATER FILLED SPRINKLER PIPING AND EQUIPMENT. (MIN 40° F)	8-31-15		OWNER / ARCHITECT STATE FIRE MARSHAL PORTLAND FIRE DEPARTMENT	4 FREE STREET 4 FREE STREET, PORTLAND, ME	PLANS & DETAILS DWG. NO. 1 OF 1 JOB NUMBER AU-5380-15 SCALE AS NOTED DATE 8/28/15