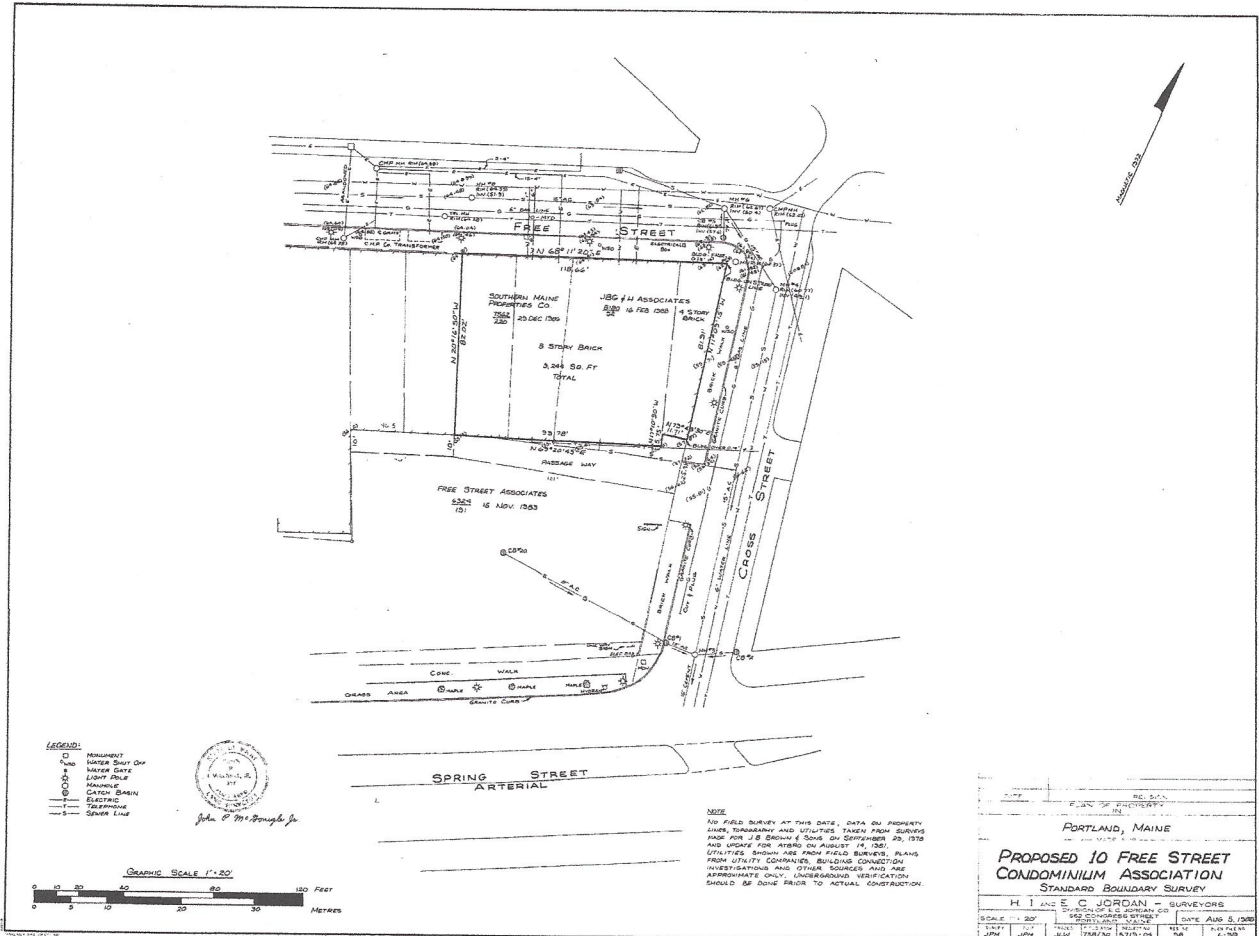


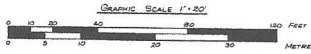
Attachment #4



- LEGEND**
- MONUMENT
 - WATER MAIN
 - WATER GATE
 - LIGHT POLE
 - MANHOLE
 - CATCH BASIN
 - ELECTRIC
 - TELEPHONE
 - SEWER LINE



John P. M. Pough Jr.



NOTE
 NO FIELD SURVEY AT THIS DATE. DATA ON PROPERTY LINES, THOROUGHLY AND UTILITIES TAKEN FROM SURVEY MADE FOR J.B. BROWN & SONS ON SEPTEMBER 20, 1932 AND UPDATE FOR ATRHO ON AUGUST 14, 1986. UTILITIES SHOWN ARE FROM FIELD SURVEYS, PLANS FROM UTILITY COMPANIES, BUILDING CONNECTION INVESTIGATIONS AND OTHER SOURCES AND ARE APPROXIMATE ONLY. UNDERGROUND UTILITIES SHOULD BE DONE PRIOR TO ACTUAL CONSTRUCTION.

PORTLAND, MAINE	
PROPOSED 10 FREE STREET CONDOMINIUM ASSOCIATION STANDARD BOUNDARY SURVEY	
H. I. AND E. C. JORDAN - SURVEYORS	
SCALE 1"=20'	
DATE	AUG 14, 1986
BY	H. I. AND E. C. JORDAN
CHECKED	H. I. AND E. C. JORDAN
DATE	AUG 14, 1986