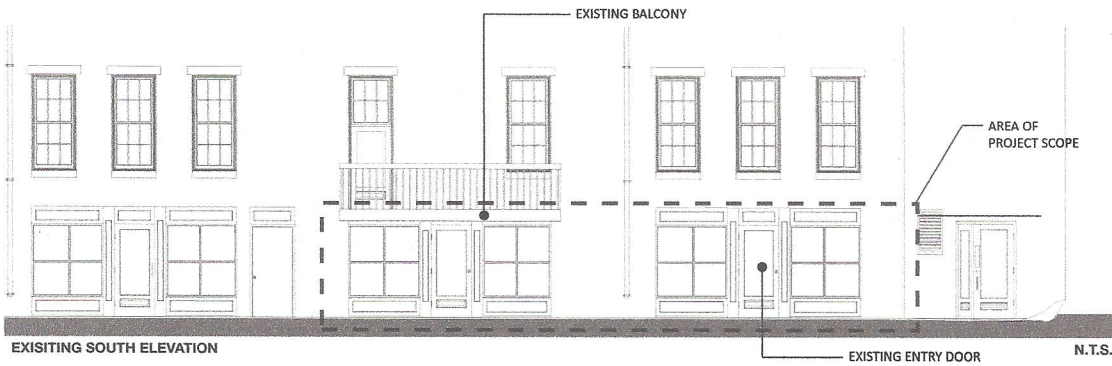


# Attachment #2



10 FREE STREET

MODIFICATIONS TO EXISTING STOREFRONT TO MOVE ENTRY DOOR AND CREATE MECHANICAL SCREEN TO CONCEAL OUTDOOR MECHANICAL EQUIPMENT

09-08-2015

*Note # Venting  
3" Heater vent PVC  
Terminate Above Louver*



CANAL **5** STUDIO

PROPOSED ENTRY MODIFICATIONS

*Note #  
To Be hung below & behind  
HVAC unit, Condenser 9-17-15*