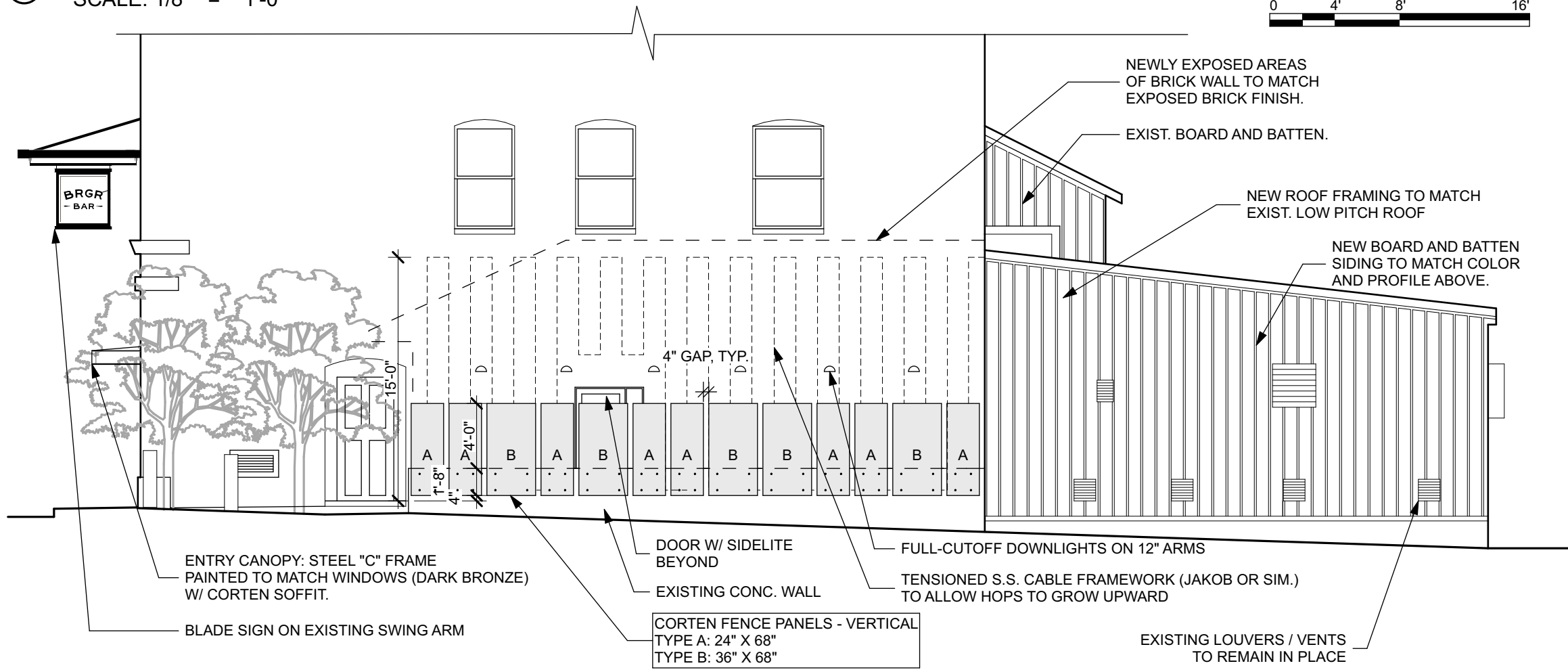
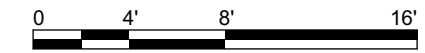
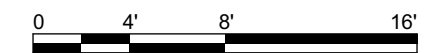


① BROWN ST. ELEVATION  
SCALE: 1/8" = 1'-0"



② SIDE ELEVATION  
SCALE: 1/8" = 1'-0"



SCALE: AS NOTED  
DATE: 12/21/16  
PHASE: FOR HISTORIC PRES. PERMIT

BROWN ST.  
ELEVATION

A-2.1