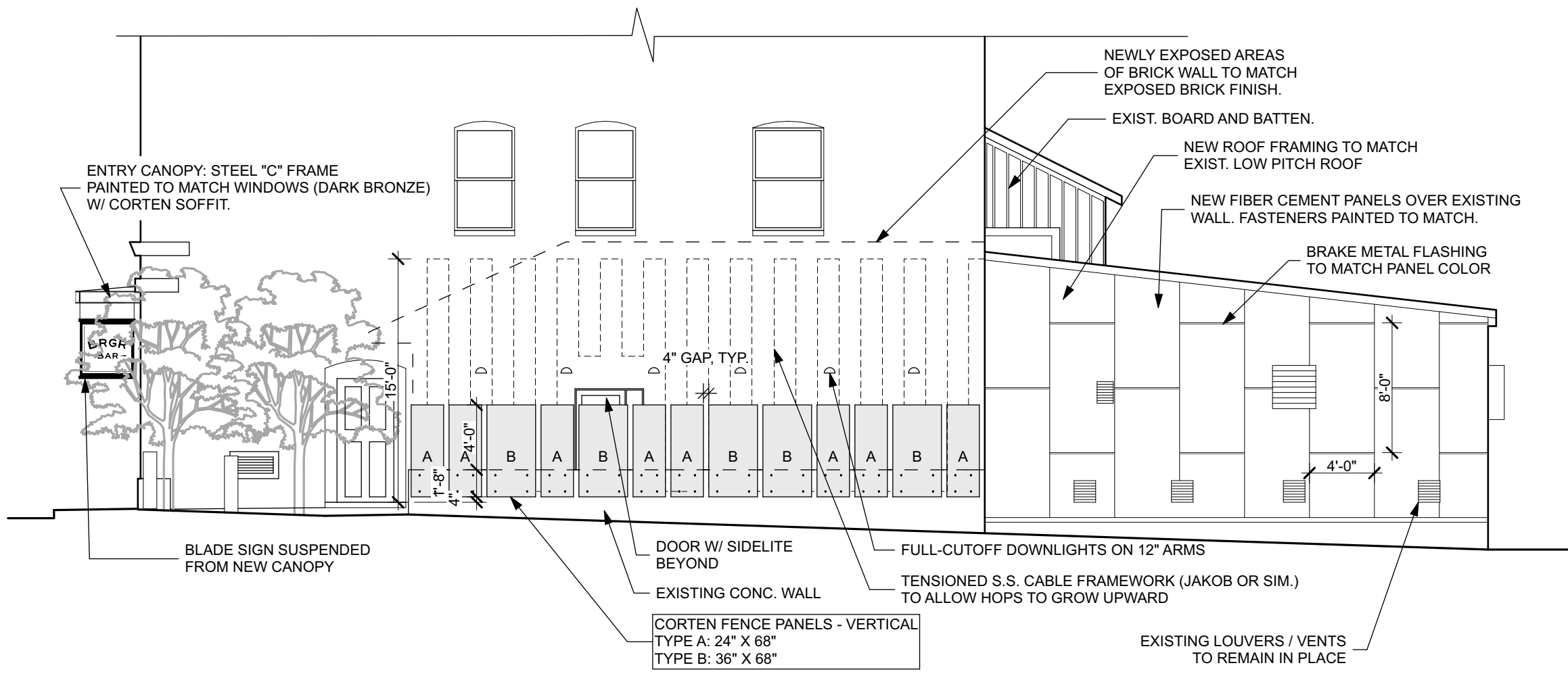


① **BROWN ST. ELEVATION**  
 SCALE: 1/8" = 1'-0"



② **SIDE ELEVATION**  
 SCALE: 1/8" = 1'-0"

SCALE: AS NOTED  
 DATE: 1/23/17  
 PHASE: FOR HISTORIC PRES. PERMIT

ELEVATIONS

A-2.1