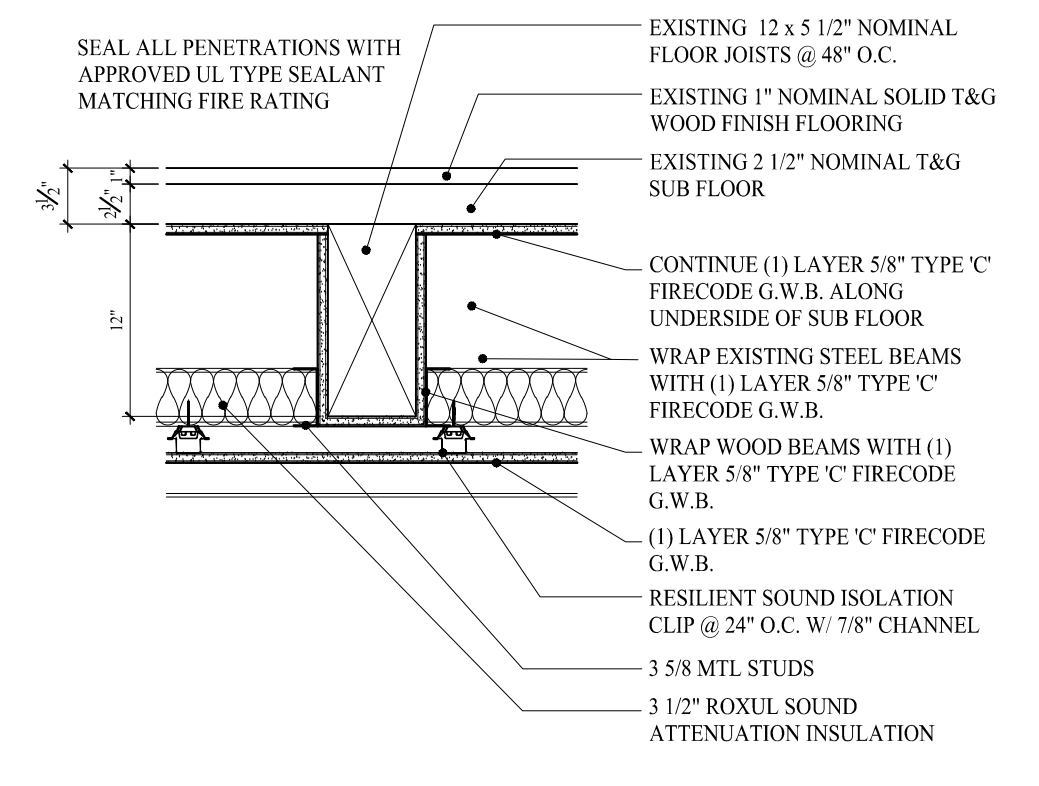
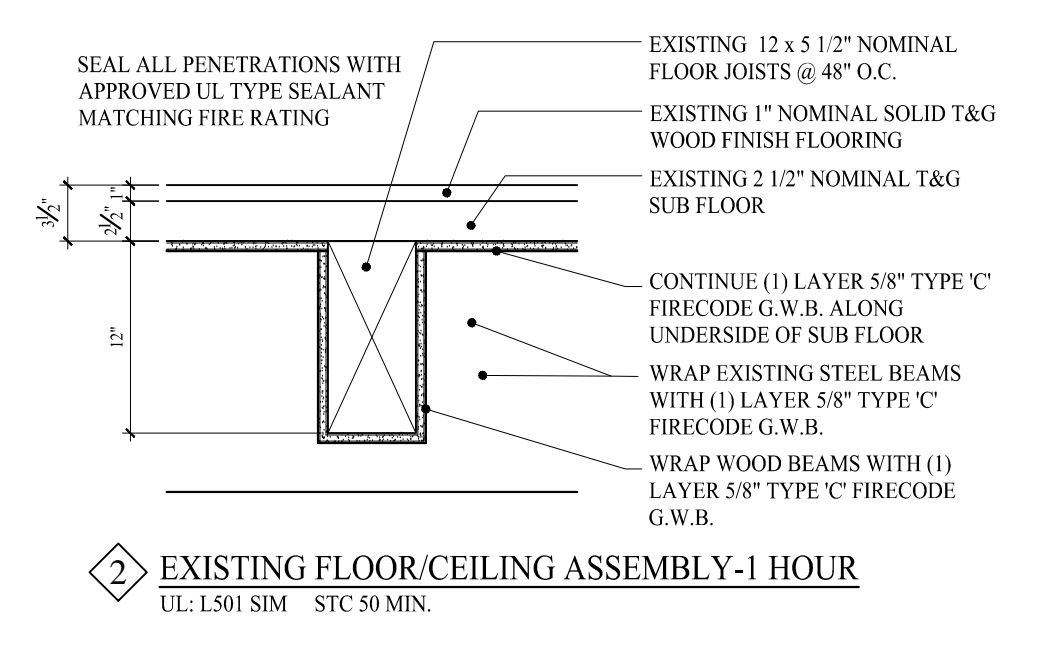
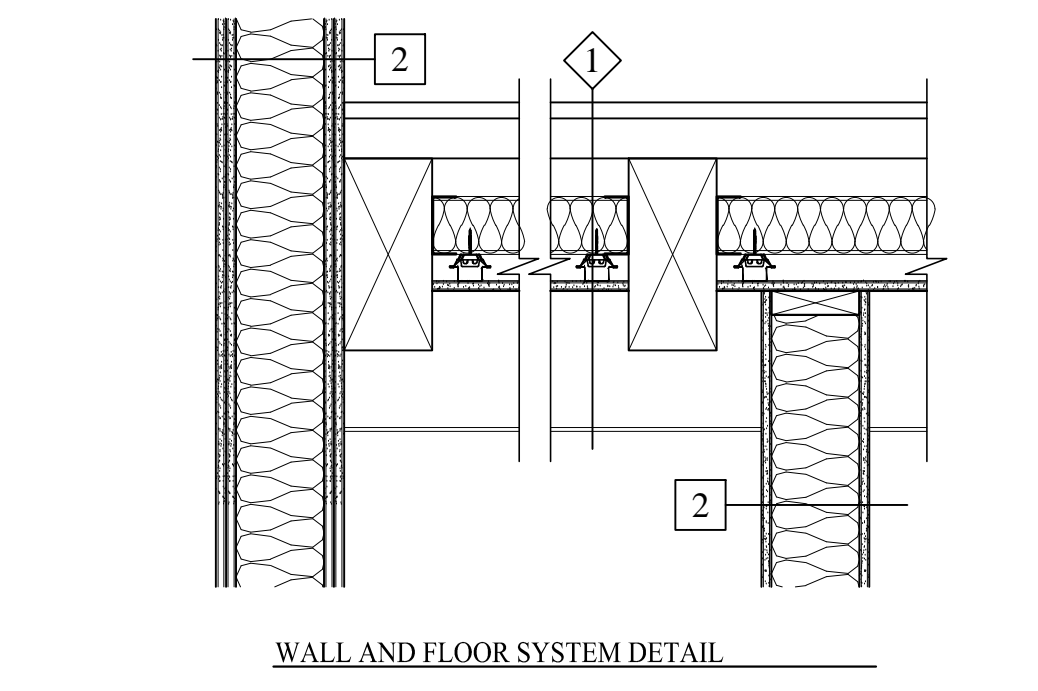
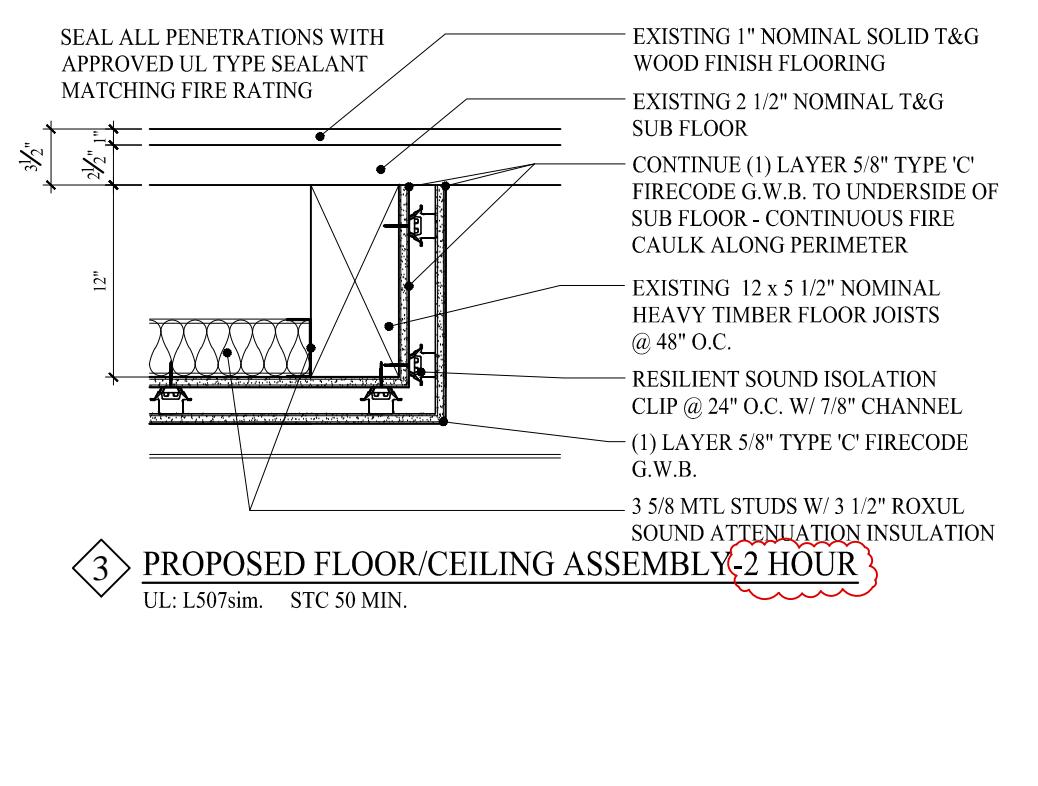
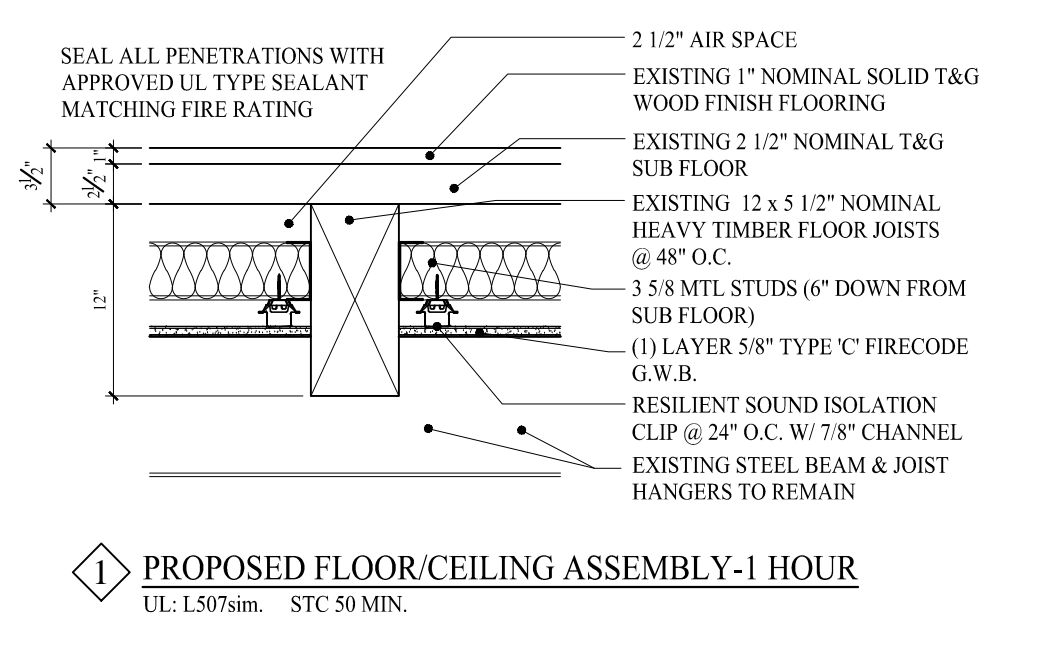


ROOF PLAN
SCALE: 1/8"=1'-0"



EXISTING FLOOR/CEILING ASSEMBLY-1 HOUR
UL: L501 SIM STC 50 MIN.



WALL LEGEND

NEW WALL	=====
EXISTING WALL	-----
DEMOLISHED WALL	-----

LIFE SAFETY LEGEND:

EMERGENCY BACKUP LIGHT	⬡
EXIT LIGHT	EXIT
EXIT/EMERGENCY BACKUP LIGHT COMBO	EXIT
SMOKE DETECTOR	⊕
SMOKE & CO DETECTOR	⊕
HORN/STROBE	⊕
STROBE	⊕
FIRE EXTINGUISHER IN RECESSED CABINET	⊕
PULL STATION	⊕
COAX & CAT6 (DATA)	⊕
DUPLEX	⊕

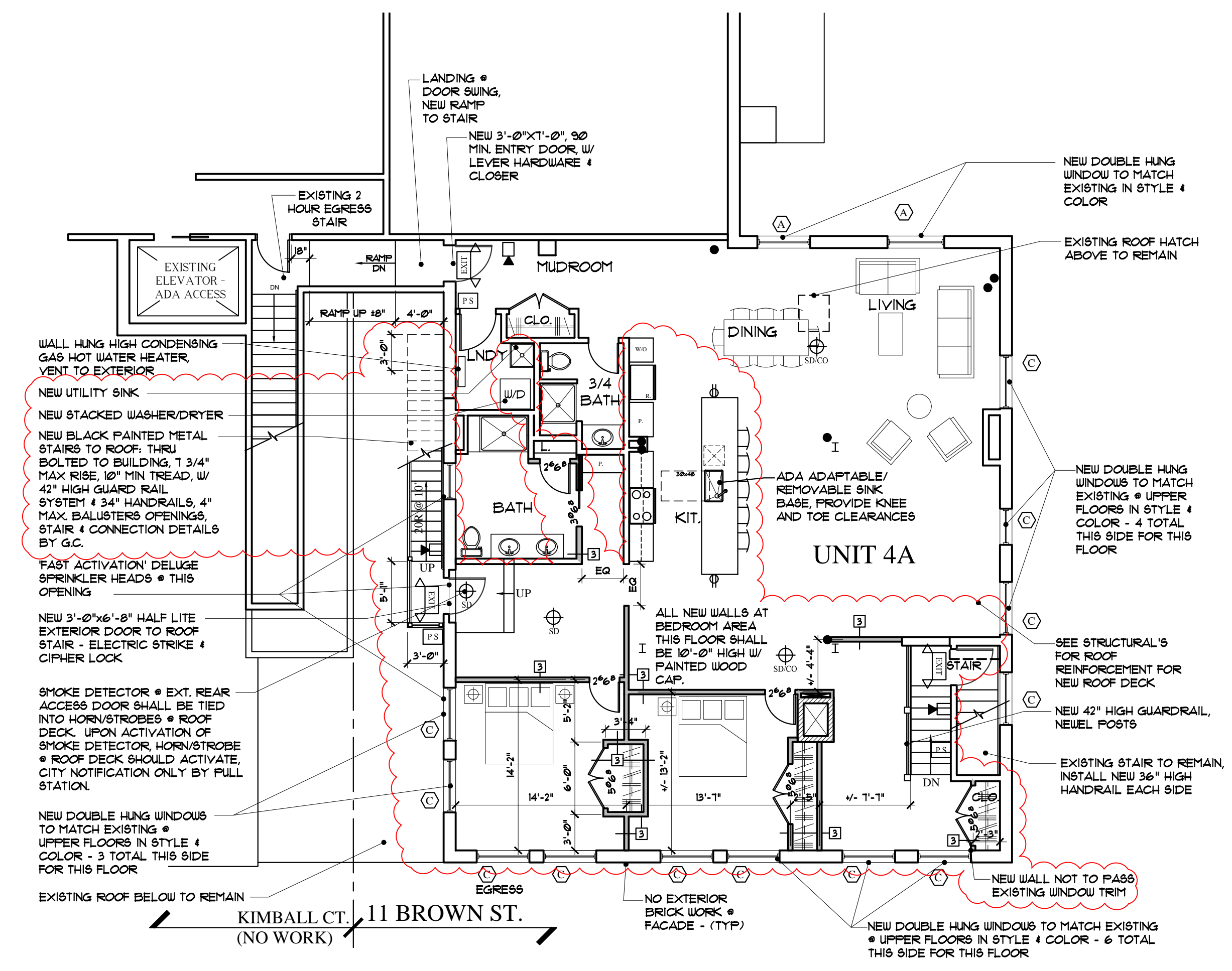
LIFE SAFETY NOTES:

LIFE SAFETY AND FIRE ALARM SYSTEMS SHALL BE DESIGNED AND INSTALLED PER NFPA 72, BY A CITY/STATE APPROVED CONTRACTOR WITH A SEPARATE PERMIT.

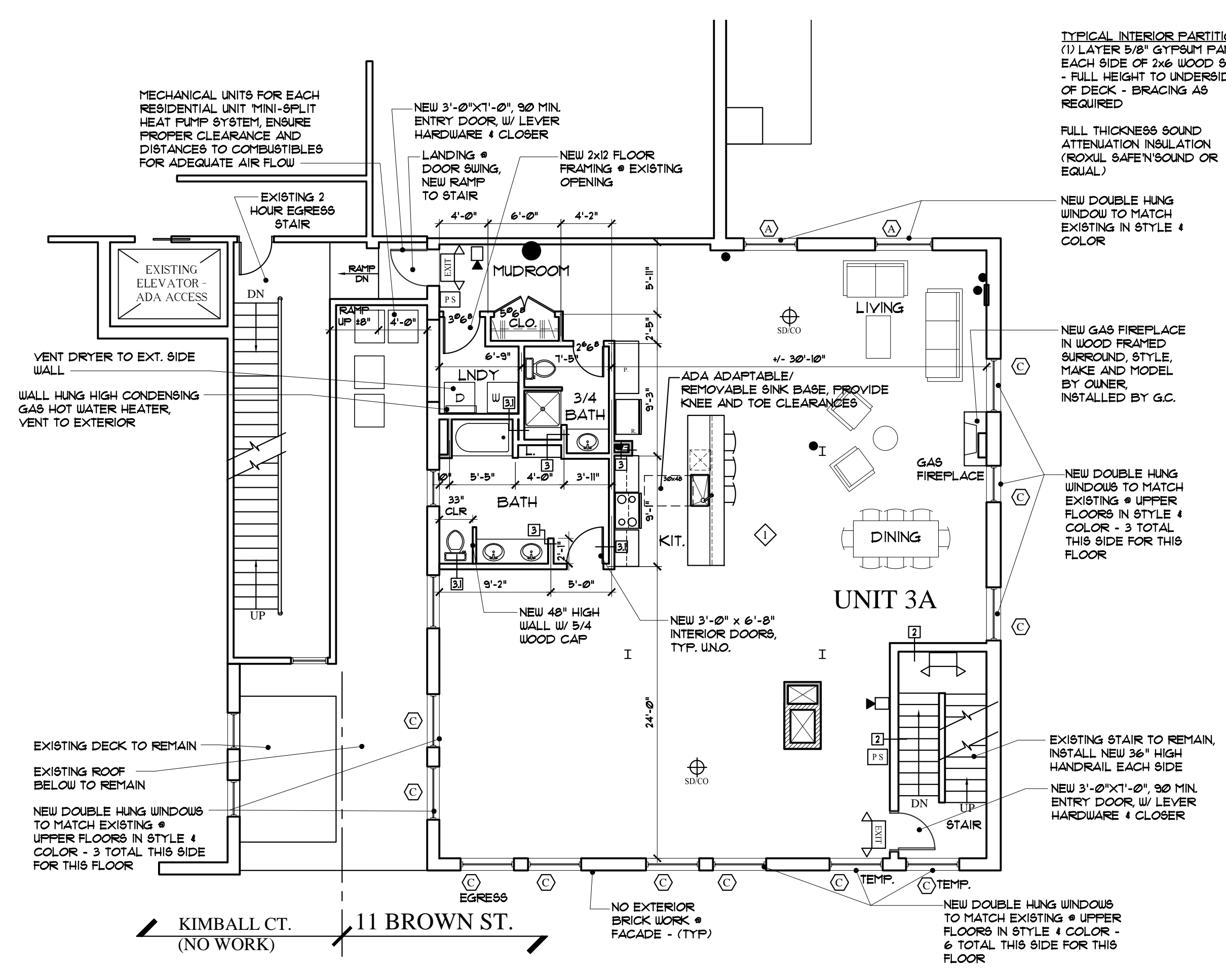
ALL STROBES TO BE 30 CANDELA UNLESS OTHERWISE NOTED.

SYSTEM SHALL BE SUPERVISED BY AN OFF-SITE CERTIFIED BY THE CITY OF PORTLAND THIRD PARTY

PERMITTING AND INSTALLATION OF THE LIFE SYSTEM SHALL BE PERMITTED AND PERFORMED BY A CITY APPROVED CONTRACTOR



FOURTH FLOOR PLAN
SCALE: 1/8"=1'-0"



THIRD FLOOR PLAN
SCALE: 1/8"=1'-0"

ADDENDUM: JANUARY 20, 2017
BUILDING PERMIT: OCTOBER 20, 2015

FOR CONSTRUCTION

THIRD/FOURTH FLOOR PLANS

A-1.2

MARK MUELLER ARCHITECTS A.I.A.
100 Commercial Street
Suite 205
Portland, Maine 04101
Phone: 207.774.9057
Email: rfm@muellerarchitects.com

EASTMAN BLOCK CONDOS
11 BROWN STREET
PORTLAND, MAINE