



Submittal Data Sheet
3.5-Ton DC Ducted Unit
FBQ4:PVJURZQ42PVJU9

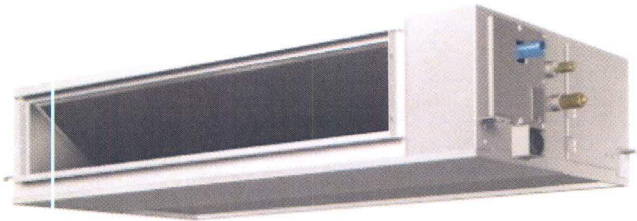
FEATURES

- Medium external static pressure (ESP) capabilities up to 0.8 in. W.G.
- Three user selected fan speeds available plus fan "Auto" logic
- Built-in condensate pump
- Maximum piping length up to 230 ft. allows flexible placement of indoor unit
- Maximum piping height separation up to 164 ft.
- 10 year limited parts and compressor warranty

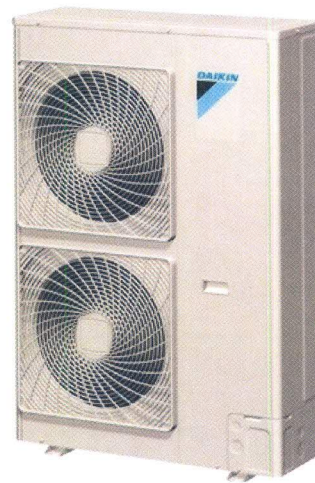
BENEFITS

- DC fan motor provides improved efficiency
- Bottom access for easy service
- Low ambient cooling operation down to 0°F (with optional wind baffle(s))

INDOOR UNIT



OUTDOOR UNIT





Submittal Data Sheet
 3.5-Ton DC Ducted Unit
 FBQ42PVJURZQ42PVJU9

SYSTEM PERFORMANCE			
Indoor Unit Model No.	FBQ42PVJU	Indoor Unit Name:	SKYAIR DC DUCTED
Outdoor Unit Model No.	RZQ42PVJU9	Outdoor Unit Name:	3.5-Ton SkyAir Heat Pump
Rated Cooling Capacity (Btu/hr):	42,000	Rated Cooling Conditions:	Indoor (°F DB/WB): 80 / 67 Ambient (°F DB/WB): 95 / 75
Sensible Capacity (Btu/hr):	31,600	Rated Piping Length(ft):	
Max/Min Cooling Capacity (Btu/hr):	/	Rated Height Difference (ft):	164.00
Cooling Input Power (kW):	3.490	Rated Heating Conditions:	Indoor (°F DB/WB): 70 / 70 Ambient (°F DB/WB): 47 / 43
SEER (Non-Ducted/Ducted):	16.00 /	HSPF (Non-Ducted/Ducted):	8.8 /
EER (Non-Ducted/Ducted):	10.20 /		
Rated Heating Capacity (Btu/hr):	47,000		
Heating Input Power (kW):	3.49		

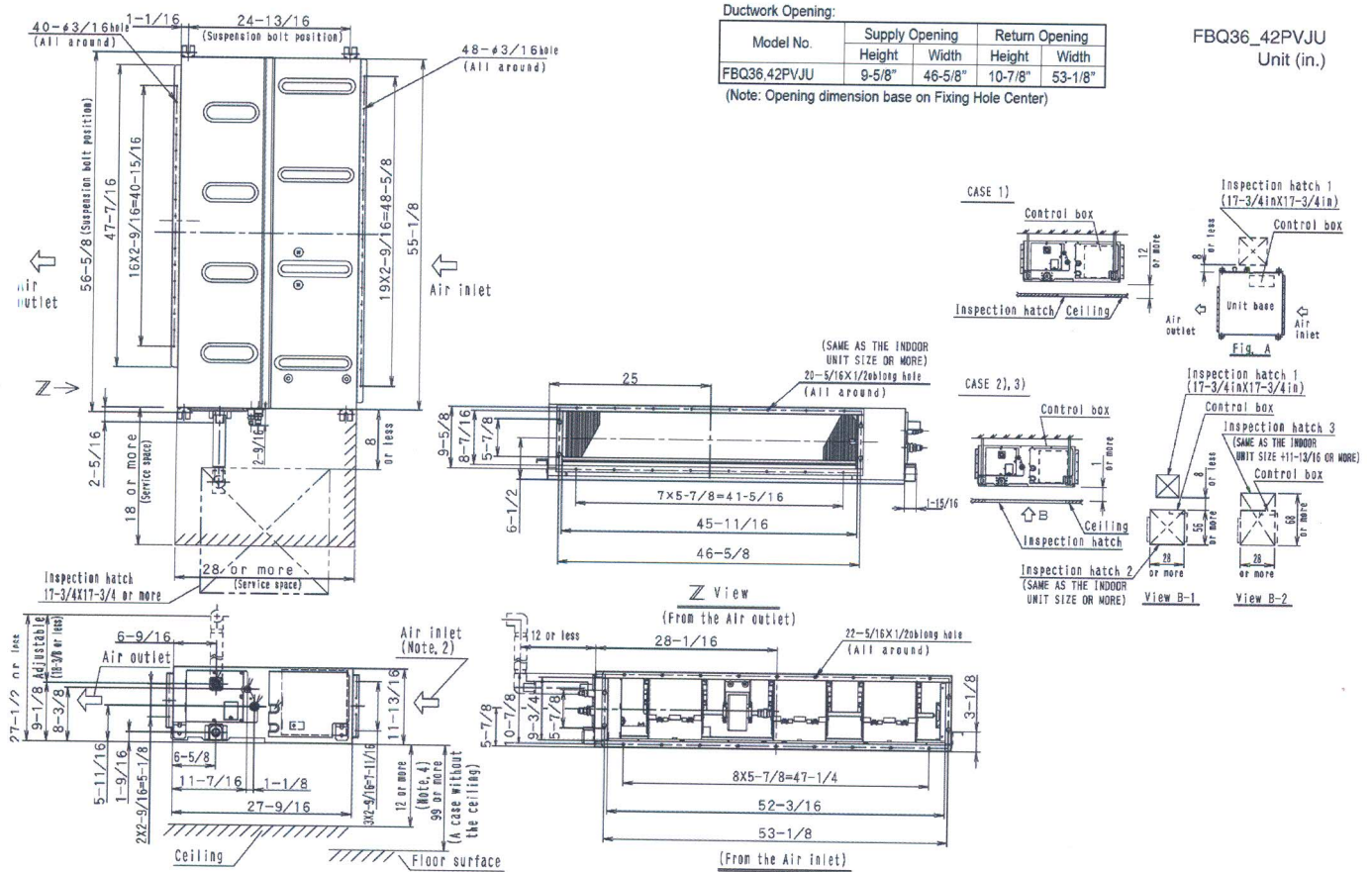
SYSTEM DETAILS			
Refrigerant Type:	R-410A	Cooling Operation Range (°F DB):	23 - 115
Holding Refrigerant Charge (lbs):	8.8	Heating Operation Range (°F WB):	0 - 77
Additional Charge (lb/ft):	0.04	Max. Pipe Length (Vertical) (ft):	
Pre-charge Piping (Length) (ft):		Cooling Range w/Baffle (°F DB):	0 - 115
Max. Pipe Length (Total) (ft):	230	Heating Range w/Baffle (°F WB):	0 - 77
Max Height Separation (Ind to Ind ft):	164		



Submittal Data Sheet
 3.5-Ton DC Ducted Unit
 FBQ42PVJURZQ42PVJU9

INDOOR UNIT DETAILS			
Pcwer Supply (V/Hz/Ph):	208-230 / 60 / 1	Airflow Rate (H/M/L) (CFM):	1,377/1,165/988
Pcwer Supply Connections:	L1, L2, Ground	Moisture Removal (Gal/hr):	
Mln. Circuit Amps MCA (A):	2.90	Gas Pipe Connection (inch):	5/8
Mex Overcurrent Protection (MOP) (A):		Liquid Pipe Connection (inch):	3/8
Dimensions (HxWxD) (in):	11-13/16 x 55-1/8 x 27-9/16	Condensate Connection (inch):	1
Panel (HxWxD) (in):		Sound Pressure (H/M) (dBA):	44/42
Net Weight (lb):	102	Sound Power Level (dBA):	
Panel Weight (lb):		Ext. Static Pressure (Rated/Max) (inWg):	0.80 / 0.80

DIMENSIONAL DRAWING - INDOOR UNIT





Submittal Data Sheet
 3.5-Ton DC Ducted Unit
 FBC42PVJURZQ42PVJU9

OUTDOOR UNIT DETAILS

Power Supply (V/Hz/Ph):	208-230 / 60 / 1	Compressor Type:	Inverter
Power Supply Connections:	L1, L2, Ground	Capacity Control Range (%):	25 - 100
Max. Circuit Amps MCA (A):	27.00	Airflow Rate (H) (CFM):	3,740
Max. Overcurrent Protection (MOP) (A):	30.00	Gas Pipe Connection (inch):	5/8
Max. Starting Current MSC(A):		Liquid Pipe Connection (inch):	3/8
Rated Load Amps RLA(A):	19.6	Sound Pressure (H) (dBA):	58
Dimensions (HxWxD) (in):	52-15/16 x 35-7/16 x 12-5/8	Sound Power Level (dBA):	
Net Weight (lb):	283		

DIMENSIONAL DRAWING - OUTDOOR UNIT

