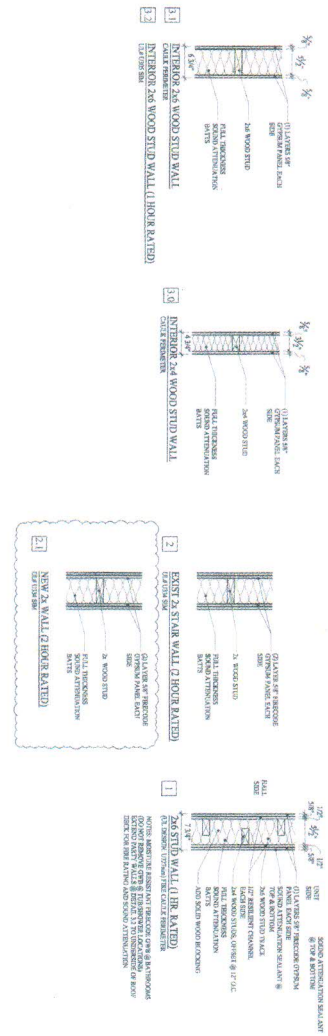
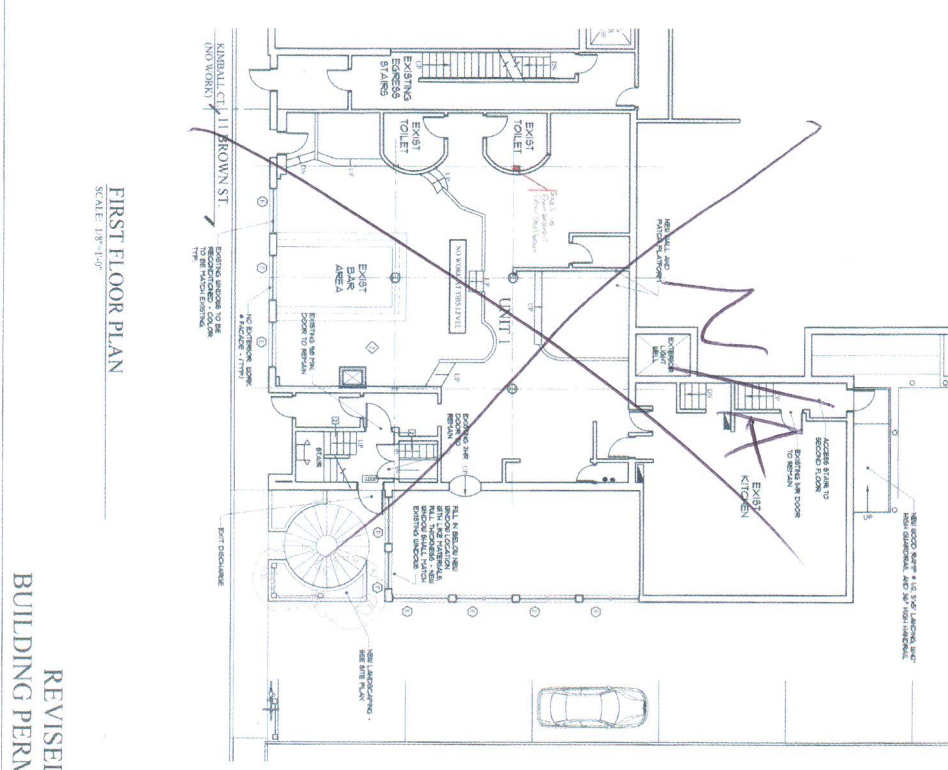
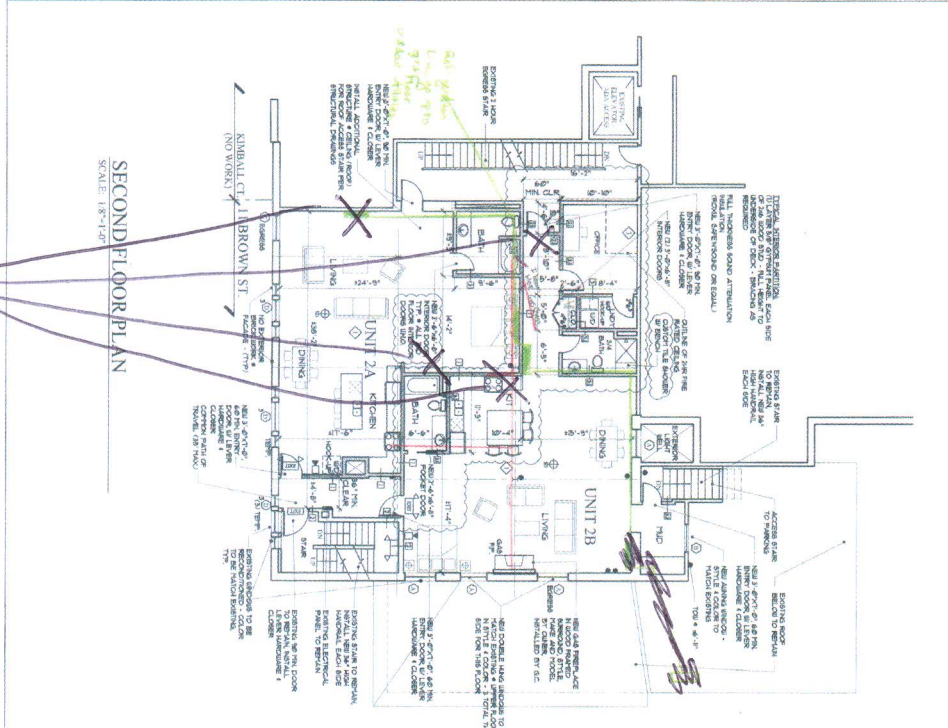


indoor wall
wanted units

red line = gas lines



- WINDOW NOTES**
- (A) NEW 2\"/>

REVISED: FEBRUARY 08, 2016
BUILDING PERMIT: OCTOBER 20, 2015

FOR CONSTRUCTION
FIRST/SECOND FLOOR PLANS

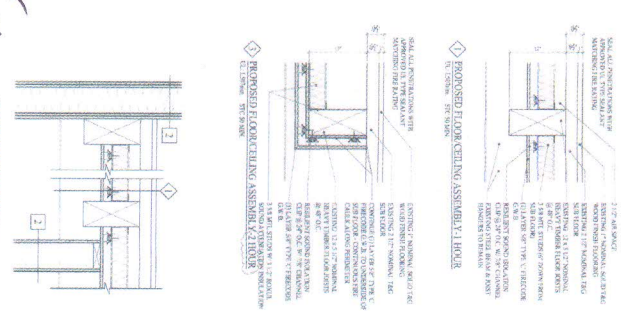
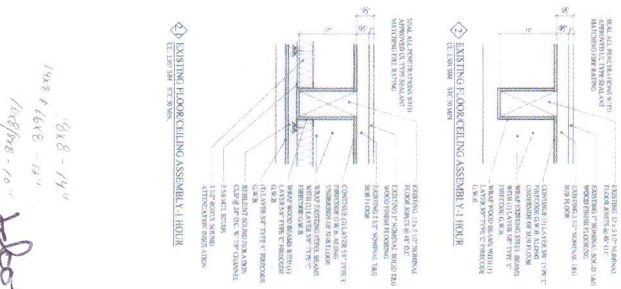
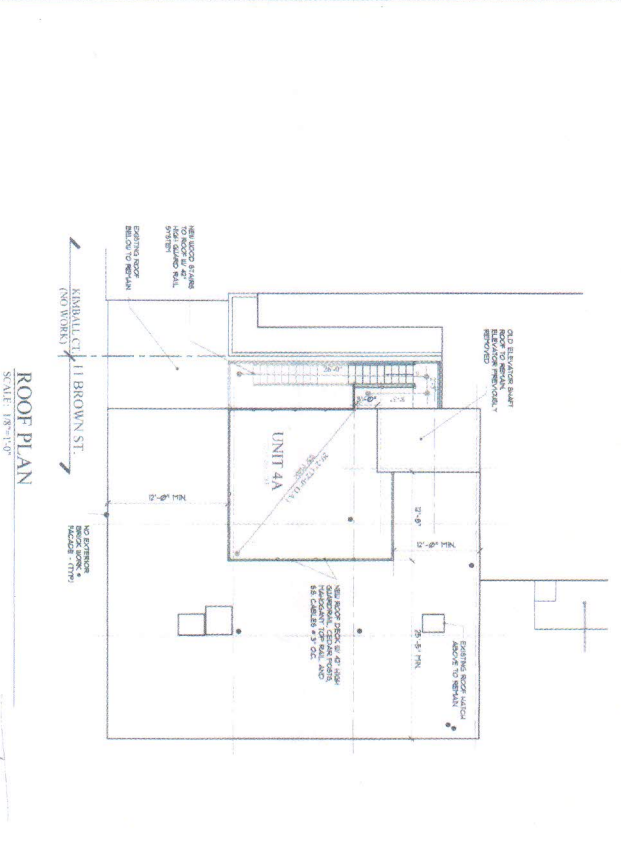
EASTMAN BLOCK CONDOS

11 BROWN STREET
PORTLAND, MAINE

MAR K MUELLER ARCHITECTS
AIA

11 BROWN STREET
PORTLAND, MAINE 04101
PHONE: 603.737.4487
WWW.MARKMUELLERARCHITECTS.COM

A-1.1



WALL LEGEND

NEW WALL
EXISTING WALL
DEMOLISHED WALL

LIFT SAFETY LEGEND

LI-01
LI-02
LI-03
LI-04
LI-05
LI-06
LI-07
LI-08
LI-09
LI-10
LI-11
LI-12
LI-13
LI-14
LI-15
LI-16
LI-17
LI-18
LI-19
LI-20
LI-21
LI-22
LI-23
LI-24
LI-25
LI-26
LI-27
LI-28
LI-29
LI-30

LI-1 SAFETY LEGEND

LI-1.01
LI-1.02
LI-1.03
LI-1.04
LI-1.05
LI-1.06
LI-1.07
LI-1.08
LI-1.09
LI-1.10
LI-1.11
LI-1.12
LI-1.13
LI-1.14
LI-1.15
LI-1.16
LI-1.17
LI-1.18
LI-1.19
LI-1.20
LI-1.21
LI-1.22
LI-1.23
LI-1.24
LI-1.25
LI-1.26
LI-1.27
LI-1.28
LI-1.29
LI-1.30

NOTES: "THIS PLAN SHOWS THE LOCATION OF THE BOILER ROOM. THE BOILER ROOM SHALL BE CONCRETE WITH REINFORCING BARS AT 12" ON CENTER. ALL REINFORCING BARS SHALL BE #4. MINIMUM 2" CLEARANCE FROM ALL CONCRETE SURFACES." "NO EXISTING BOILER ROOM WORK - (NO WORK) - TO BE REMOVED TO REPAIR."

