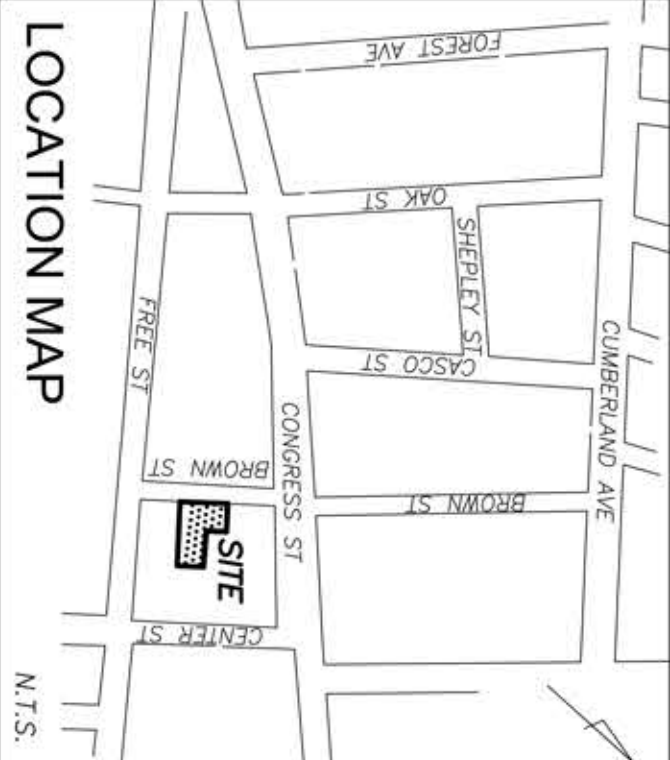
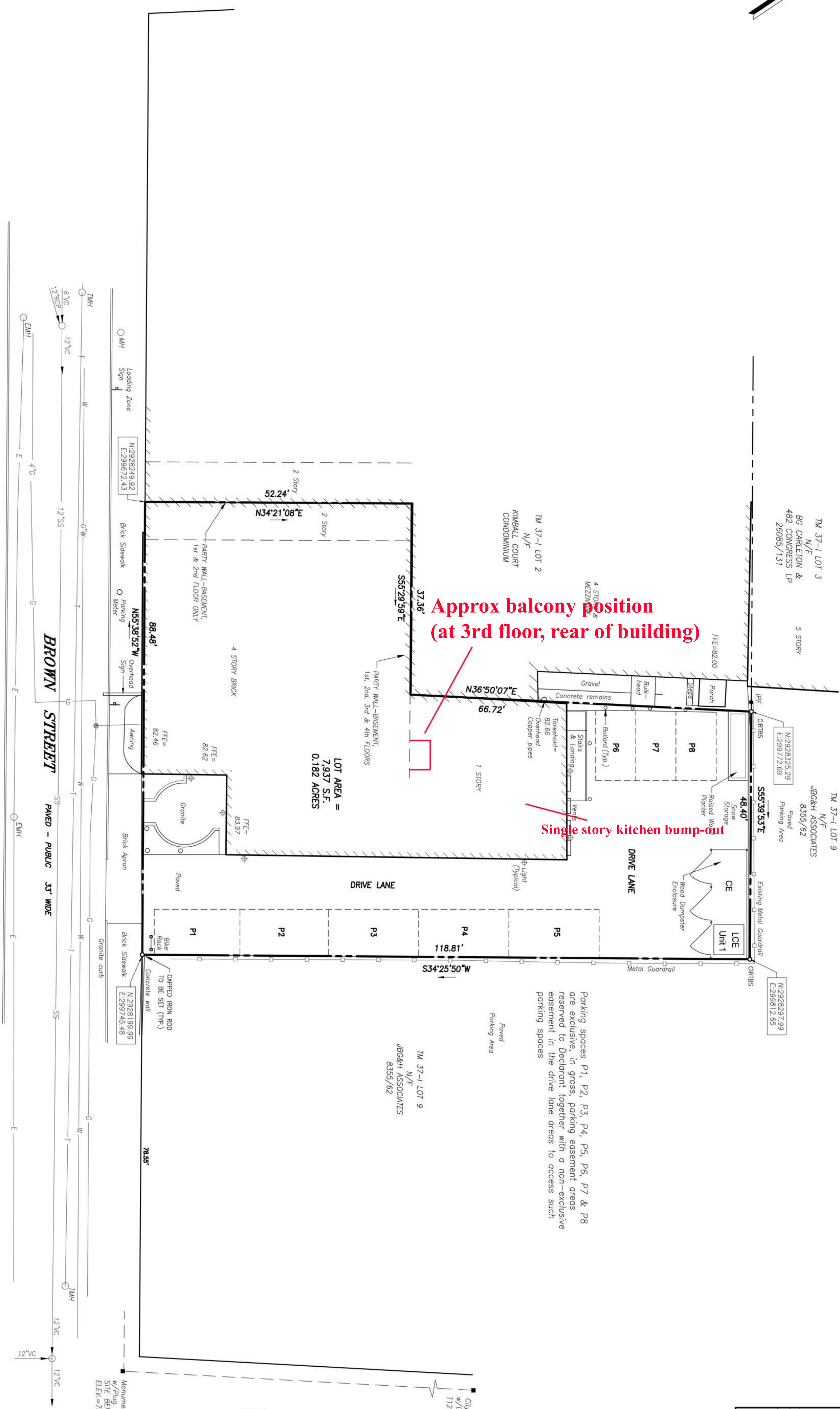


CONGRESS ST.



- LEGEND**
- CURBS
 - CAPPED IRON ROD SET
 - IRON PIPE OR ROD FOUND
 - MONUMENT FOUND
 - MARKHOLE
 - SIGN
 - GAS VALVE
 - GUARDRAIL
 - CURB
 - OHW— OVERHEAD WIRES
 - UNDERGROUND POWER
 - WATER LINE
 - GAS LINE
 - TELEPHONE
 - SS— SANITARY SEWER
 - FFE FINISHED FLOOR ELEVATION
 - N/F NOW OR FORMERLY
 - DEED BOOK AND PAGE
 - 000/000 WALL MOUNTED LIGHT
 - CE COMMON ELEMENT

PLAN REFERENCE

1. AMENDED CONDOMINIUM PLAT "KIMBALL COURT CONDOMINIUMS" MADE FOR RECORD OWNER THE KIMBALL BUILDING, LLC DATED JULY 12, 2006, REV. 11-14-13 BY OWEN HASKELL, INC.
2. RECORDING PLAT 11 BROWN STREET, PORTLAND, MAINE MADE FOR OOBLECK, LLC BY OWEN HASKELL, INC. DATED SEPT. 16, 2015 RECORDED IN PLAN BOOK 216, PAGE 15.

UTILITY NOTE

THE UNDERGROUND UTILITIES SHOWN HAVE BEEN LOCATED FROM FIELD SURVEY INFORMATION AND EXISTING DRAWINGS. THE SURVEYOR MAKES NO GUARANTEES THAT THE UNDERGROUND UTILITIES SHOWN COMPRISE ALL SUCH UTILITIES IN THE AREA EITHER IN SERVICE OR ABANDONED. THE SURVEYOR FURTHER DOES NOT WARRANT THAT THE UNDERGROUND UTILITIES SHOWN ARE IN THE EXACT LOCATION INDICATED ALTHOUGH HE DOES CERTIFY THAT THEY ARE LOCATED AS ACCURATELY AS POSSIBLE FROM INFORMATION AVAILABLE. THE SURVEYOR HAS NOT PHYSICALLY LOCATED THE UNDERGROUND UTILITIES. CALL 1-888-DIGSAFE AT LEAST THREE BUSINESS DAYS BEFORE PERFORMING ANY CONSTRUCTION. DUE TO OSHA CONFINED SPACE REQUIREMENTS, ALL INVERTS AND PIPE SIZES MUST BE VERIFIED PRIOR TO ANY CONSTRUCTION.

GENERAL NOTES

1. DECLARANT & OWNER OF RECORD: OOBLECK LLC, 100 COMMERCIAL STREET, PORTLAND, ME
TAX MAP 37 BLOCK 1 LOT 7
C.C.R.D. BOOK 32805 PAGE 281
2. BEARINGS ARE BASED ON MAINE STATE PLANE COORDINATE SYSTEM WEST ZONE NAD 1983. CITY CONTROL POINT 1124-19-1162 AND 1124-19-1160 USED FOR HORIZONTAL CONTROL.
3. ELEVATIONS ARE BASED ON NAVD 1929. CITY BENCHMARK: M MONUMENT AT THE WESTERLY CORNER OF FOREST AND CLIMBERLAND AVENUES ELEVATION=80.57'.

CERTIFICATE

OWEN HASKELL, INC. HEREBY CERTIFIES THAT THIS PLAN IS BASED ON, AND THE RESULT OF, AN ON THE GROUND FIELD SURVEY AND THAT TO THE BEST OF OUR KNOWLEDGE, INFORMATION AND BELIEF, IT CONFORMS TO THE BOARD OF LICENSES, INFORMATION FOR PROFESSIONAL LAND SURVEYORS CURRENT STANDARDS OF PRACTICE, WITH THE EXCEPTION OF MARKERS NOT SET AT ALL CORNERS.

REV 15/18/16 WSC: LABELS AND NOTES

"EASTMAN BLOCK CONDOMINIUM"
11 BROWN STREET, PORTLAND, CUMBERLAND COUNTY, MAINE
MADE FOR RECORD OWNER
OUBLECK LLC

OWEN HASKELL, INC.
390 U.S. ROUTE ONE, FALMOUTH, ME 04105 (207) 774-0424
PROFESSIONAL LAND SURVEYORS

Drawn By	RS	Date	Job No.
Trace By	JLW	APRIL 22, 2016	2015-196P
Check By	JWS	Scale	Dwg. No.
Book No.	FILE	1" = 10'	10P

