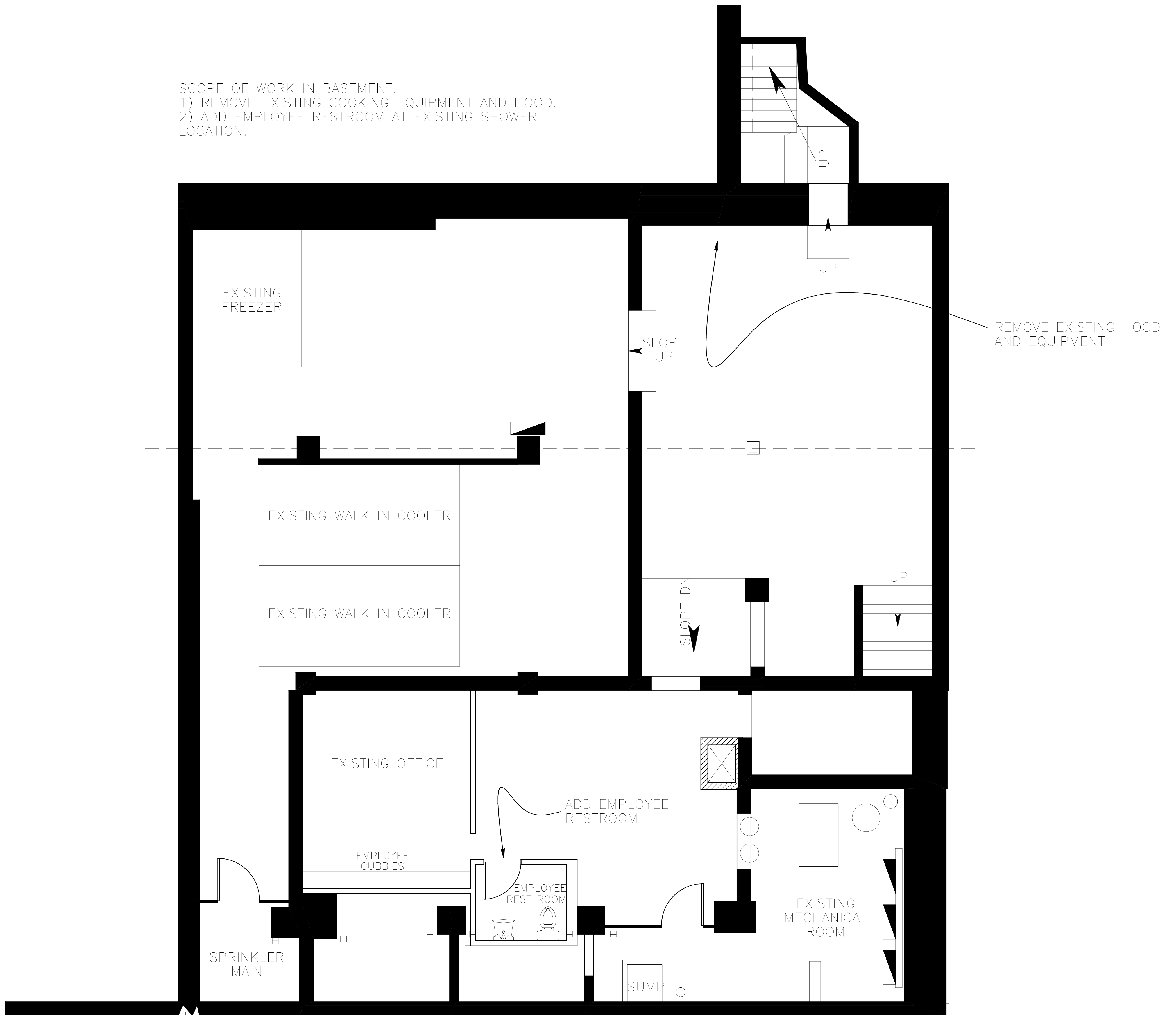


SCOPE OF WORK IN BASEMENT:  
 1) REMOVE EXISTING COOKING EQUIPMENT AND HOOD.  
 2) ADD EMPLOYEE RESTROOM AT EXISTING SHOWER LOCATION.



KIMBALL CT. | 11 BROWN ST.  
 (NO WORK)

BASEMENT PLAN

