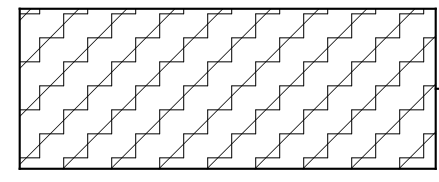
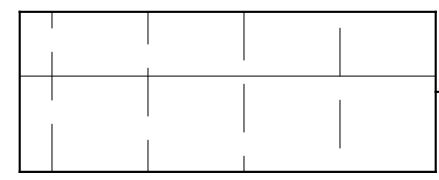


GYPSUM



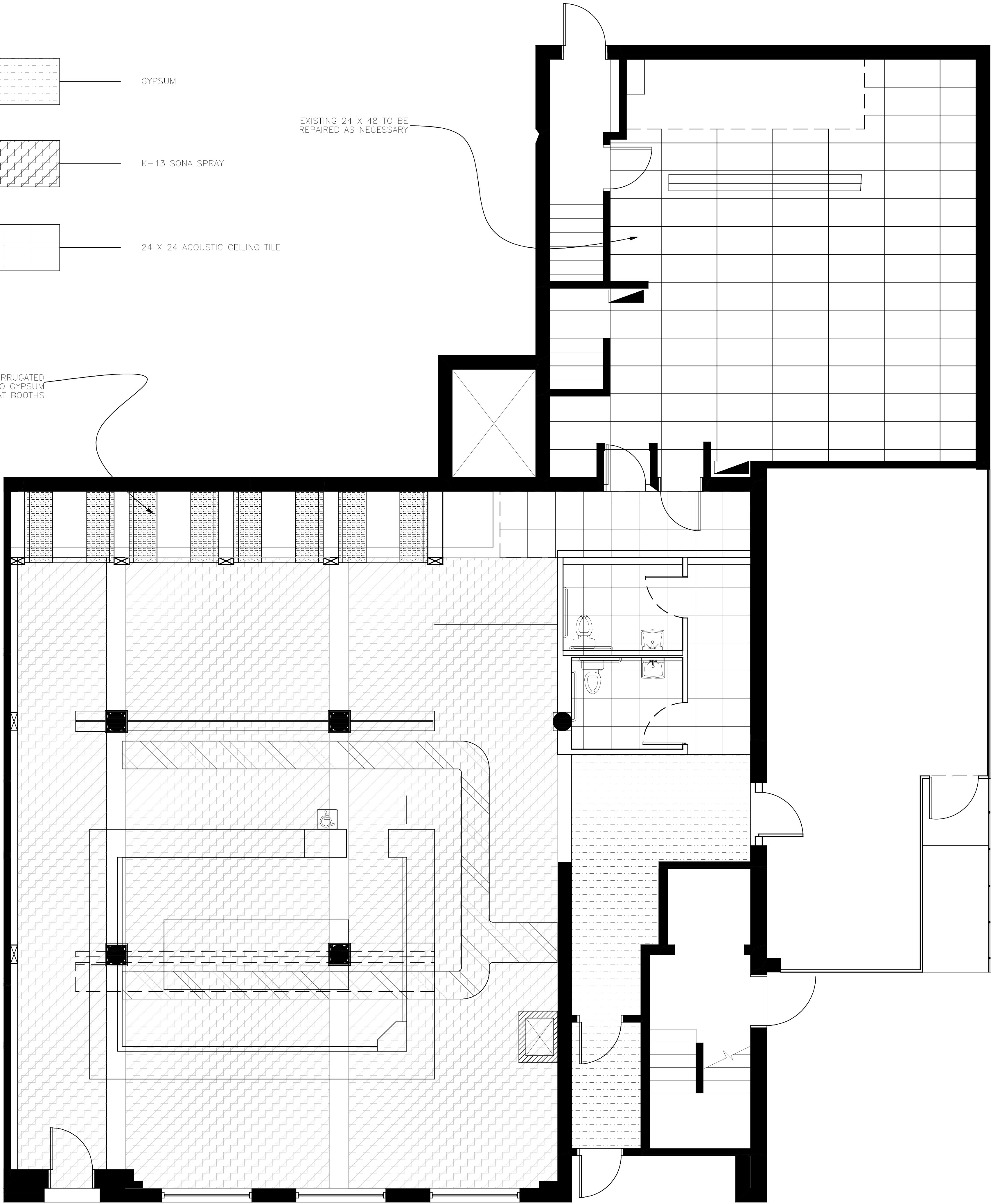
K-13 SONA SPRAY



24 X 24 ACOUSTIC CEILING TILE

EXISTING 24 X 48 TO BE REPAIRED AS NECESSARY

SALVAGED CORRUGATED STEEL APPLIED TO GYPSUM AT BOOTHS



BROWN STREET

REFLECTED CEILING PLAN

