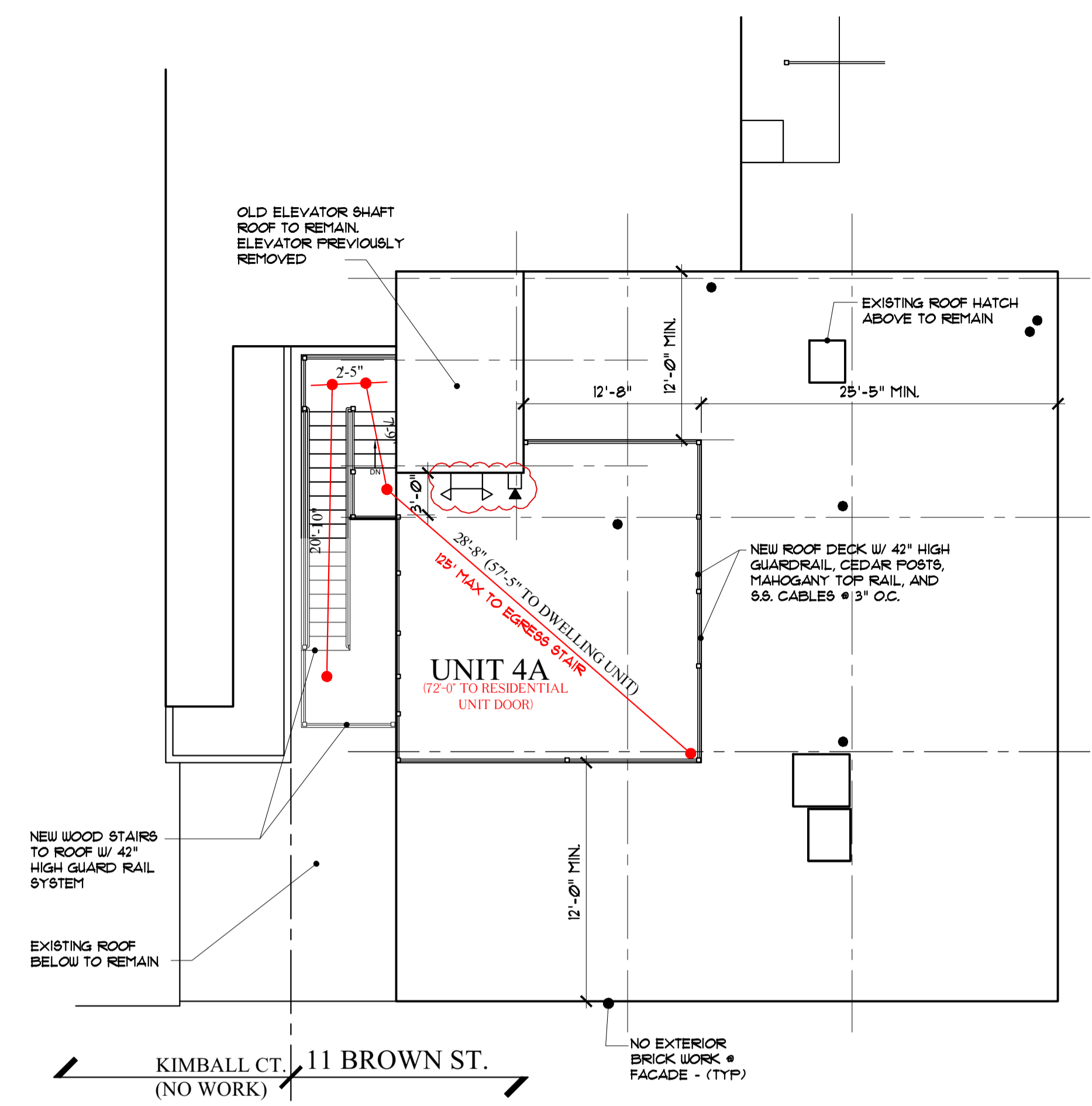
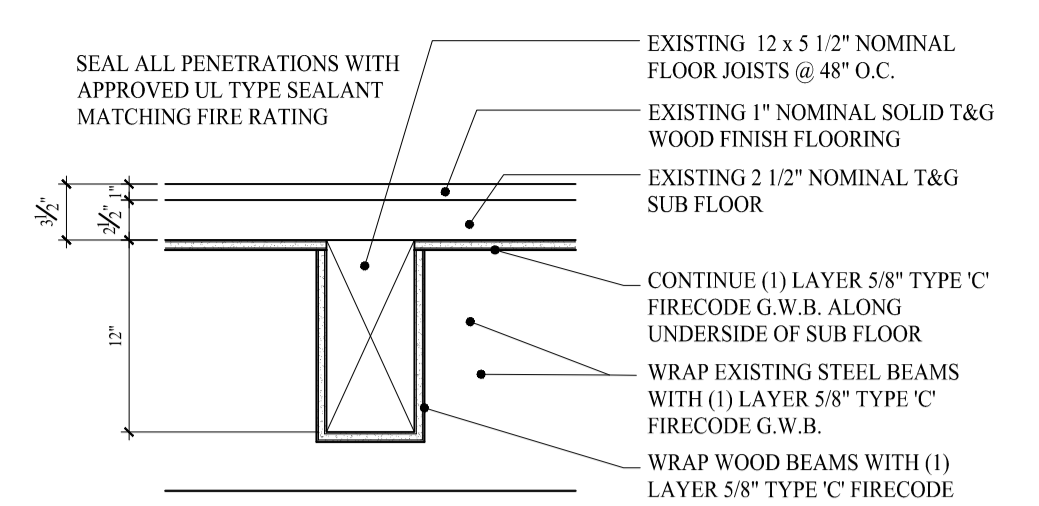




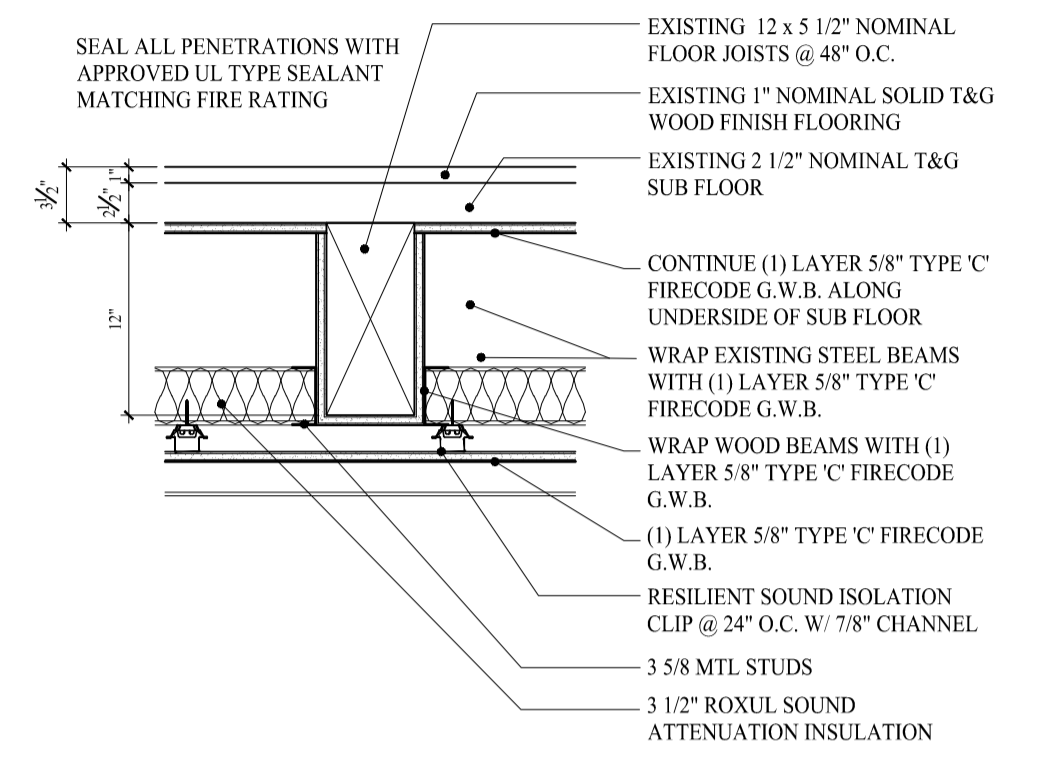
Date: 02/18/16



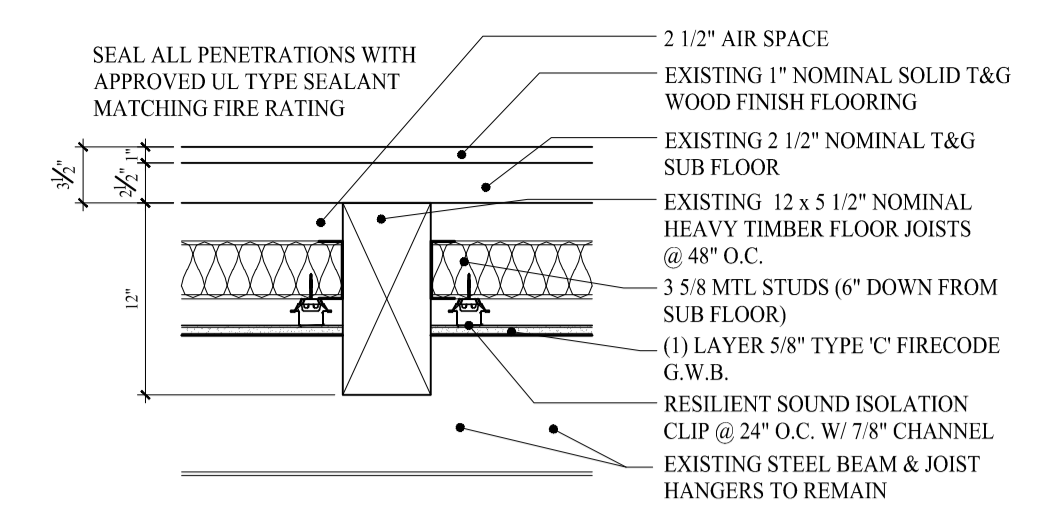
ROOF PLAN
SCALE: 1/8"=1'-0"



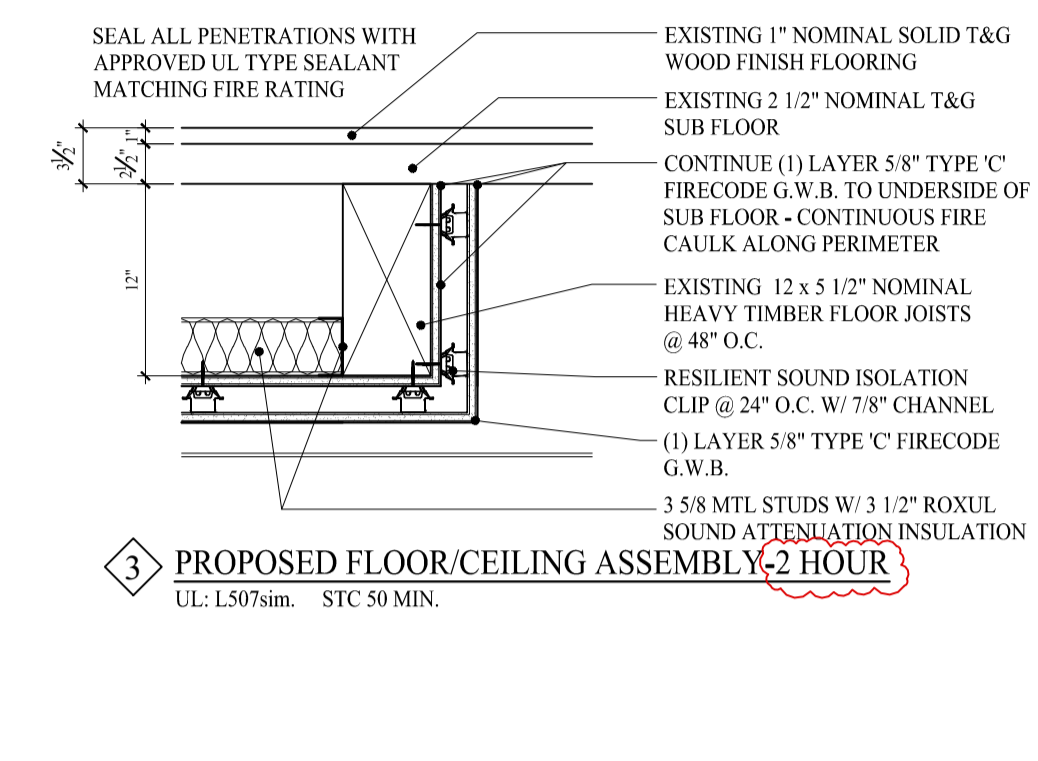
EXISTING FLOOR/CEILING ASSEMBLY-1 HOUR
UL: L501 SIM STC 50 MIN.



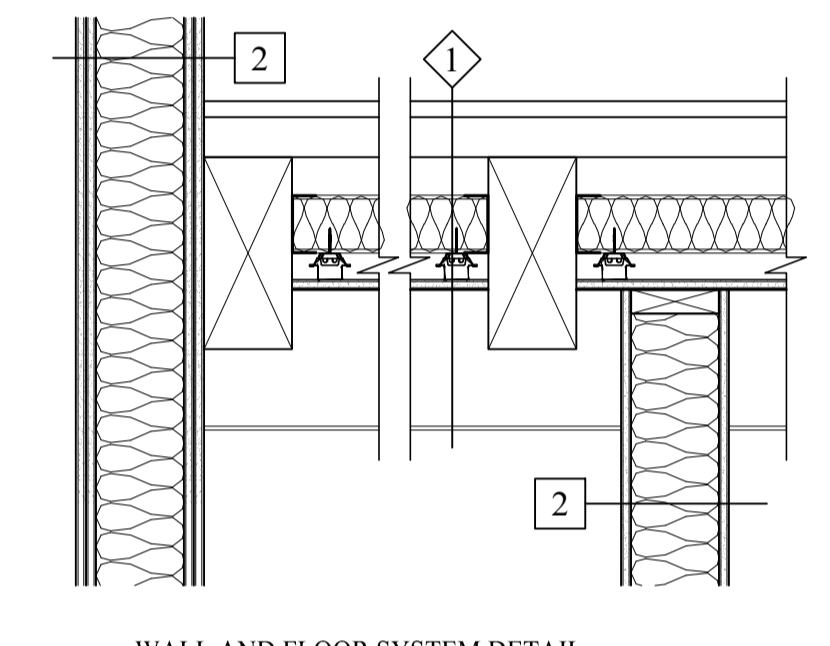
EXISTING FLOOR/CEILING ASSEMBLY-1 HOUR
UL: L501 SIM STC 50 MIN.



PROPOSED FLOOR/CEILING ASSEMBLY-1 HOUR
UL: L507sim STC 50 MIN.



PROPOSED FLOOR/CEILING ASSEMBLY-2 HOUR
UL: L507sim STC 50 MIN.



WALL AND FLOOR SYSTEM DETAIL

WALL LEGEND

	NEW WALL
	EXISTING WALL
	DEMOLISHED WALL

LIFE SAFETY LEGEND:

	EMERGENCY BACKUP LIGHT
	EXIT LIGHT
	EXIT/EMERGENCY BACKUP LIGHT COMBO
	SMOKE DETECTOR
	SMOKE & CO DETECTOR
	HORN/STROBE
	STROBE
	FIRE EXTINGUISHER IN RECESSED CABINET
	PULL STATION

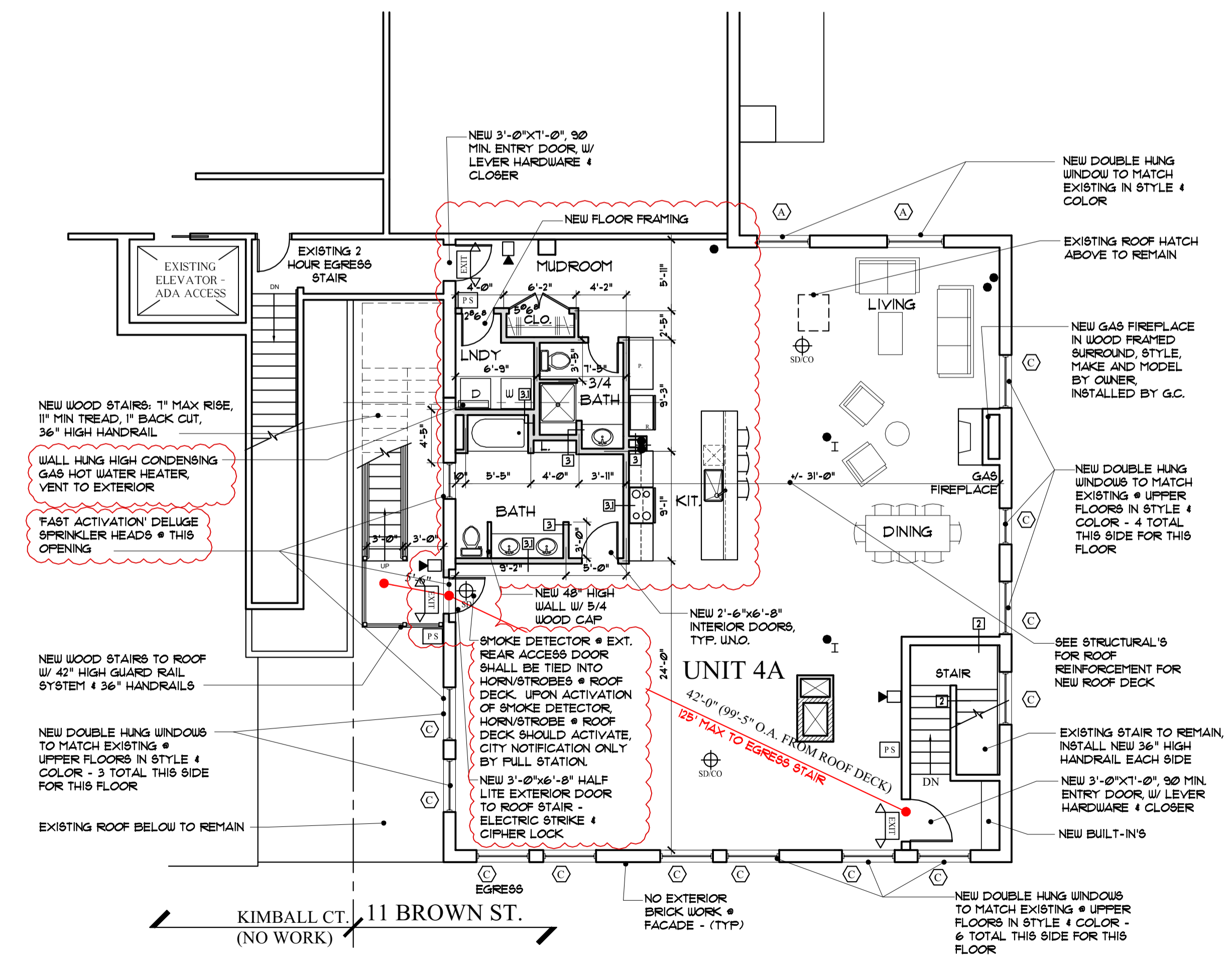
LIFE SAFETY NOTES:

LIFE SAFETY AND FIRE ALARM SYSTEMS SHALL BE DESIGNED AND INSTALLED PER NFPA 72, BY A CITY/STATE APPROVED CONTRACTOR WITH A SEPARATE PERMIT.

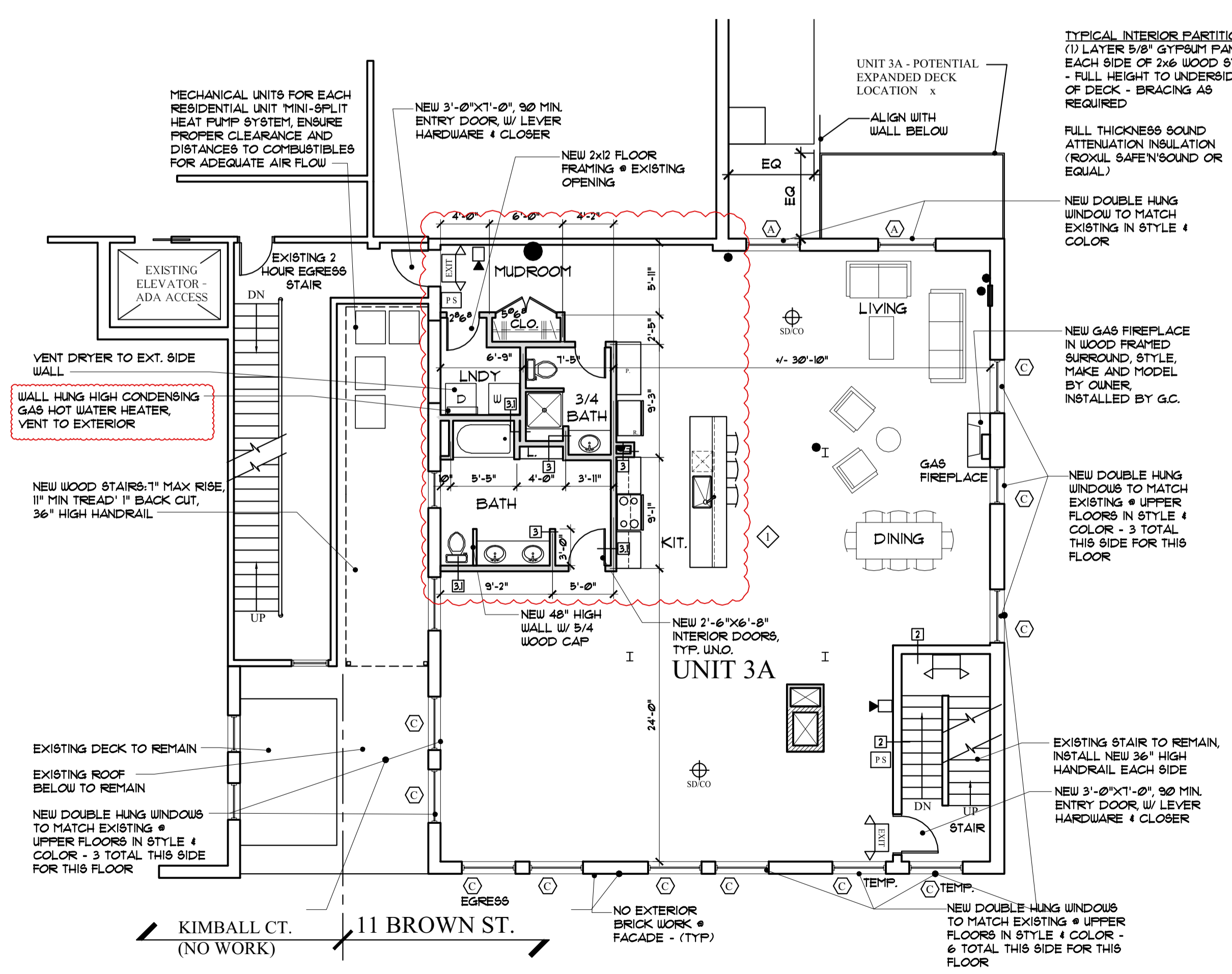
ALL STROBES TO BE 30 CANDELA UNLESS OTHERWISE NOTED.

SYSTEM SHALL BE SUPERVISED BY AN OFF-SITE CERTIFIED BY THE CITY OF PORTLAND THIRD PARTY

PERMITTING AND INSTALLATION OF THE LIFE SYSTEM SHALL BE PERMITTED AND PERFORMED BY A CITY APPROVED CONTRACTOR



FOURTH FLOOR PLAN
SCALE: 1/8"=1'-0"



THIRD FLOOR PLAN
SCALE: 1/8"=1'-0"

FOR CONSTRUCTION

REVISED: FEBRUARY 15, 2016
BUILDING PERMIT: OCTOBER 20, 2015

MARK L. MUELLER ARCHITECTS A.I.A.
100 Commercial Street
Suite 205
Portland, Maine 04101
Phone: 207.774.9057
Email: rfm@muellerarchitects.com

EASTMAN BLOCK CONDOS

11 BROWN STREET
PORTLAND, MAINE

THIRD/FOURTH FLOOR PLANS

DATE	11.10.15
PROJECT	11 BROWN STREET
DRAWN BY	MLM/TJD
CHECK BY	MLM

A-1.2