

MARK  
MUELLER  
ARCHITECTS  
A.I.A.

100 Commercial Street  
Suite 205  
Portland, Maine 04101  
Phone: 207.774.9057  
Fax: 207.773.3851  
Email: mark@muellerarchitects.com

©COPYRIGHT  
MUELLER ARCHITECTS, LLC

EXISTING BUILDING

11 BROWN STREET  
PORTLAND, MAINE 04101

REVISIONS OF:

ROOF FRAMING PLAN

REVISIONS

DATE

REV. 1  
REV. 2  
REV. 3  
REV. 4

DATE

Oct. 17th,  
2015

PROJECT

11 BROWN  
ST.

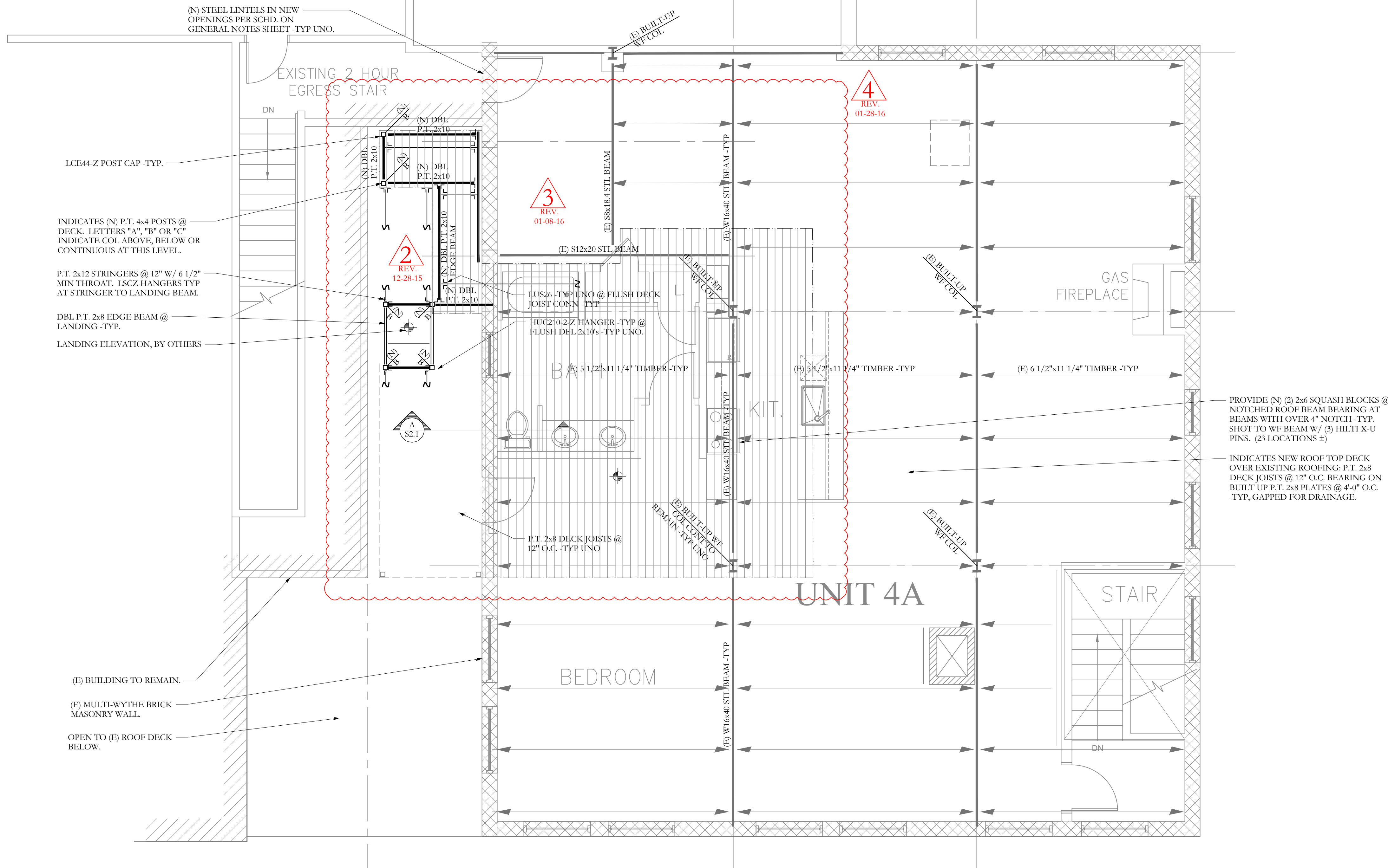
DRAWN BY

MKL

CHECK BY

ACJ

S1.5



(N) STEEL LINTELS IN NEW OPENINGS PER SCHD. ON GENERAL NOTES SHEET -TYP UNO.

EXISTING 2 HOUR EGRESS STAIR

LCE44-Z POST CAP -TYP.

INDICATES (N) P.T. 4x4 POSTS @ DECK. LETTERS "A", "B" OR "C" INDICATE COL ABOVE, BELOW OR CONTINUOUS AT THIS LEVEL.

P.T. 2x12 STRINGERS @ 12" W/ 6 1/2" MIN THROAT. LSCZ HANGERS TYP AT STRINGER TO LANDING BEAM.

DBL P.T. 2x8 EDGE BEAM @ LANDING -TYP.

LANDING ELEVATION, BY OTHERS

PROVIDE (N) (2) 2x6 SQUASH BLOCKS @ NOTCHED ROOF BEAM BEARING AT BEAMS WITH OVER 4" NOTCH -TYP. SHOT TO WF BEAM W/ (5) HILTI X-U PINS. (23 LOCATIONS ±)

INDICATES NEW ROOF TOP DECK OVER EXISTING ROOFING: P.T. 2x8 DECK JOISTS @ 12" O.C. BEARING ON BUILT UP P.T. 2x8 PLATES @ 4" O.C. -TYP, GAPPED FOR DRAINAGE.

(E) BUILDING TO REMAIN.

(E) MULTI-WYTHE BRICK MASONRY WALL.

OPEN TO (E) ROOF DECK BELOW.

KIMBALL CT. 11 BROWN ST.  
(NO WORK)

**ROOF FRAMING PLAN**

NOTES:  
1. EXISTING FLOOR DECKING IS 3" T+G PLANKS W/ 1" WOOD FLOORING. -TYP TO REMAIN UNO.  
2. SEE GENERAL NOTES FOR ADDITIONAL INFORMATION.

SCALE 1/4"=1'-0"

**Structural Integrity**  
Consulting Engineers, Inc.

77 Oak Street  
Portland, ME 04101  
p. 207-774-4614  
f. 866-793-7835  
www.structuralintegrity.com

**AARON C. JONES**  
No. 10968  
LICENSED PROFESSIONAL ENGINEER

10/17/15

**BUILD WITH CONFIDENCE**  
©2015 Structural Integrity Consulting Engineers, Inc.  
SI# 15-0216