

MARK
MUELLER
ARCHITECTS
A.I.A.

100 Commercial Street
Suite 205
Portland, Maine 04101
Phone: 207.774.9057
Fax: 207.773.3851
Email: mark@muellerarchitects.com

©COPYRIGHT
MUELLER ARCHITECTS, LLC

EXISTING BUILDING

11 BROWN STREET
PORTLAND, MAINE 04101

REVISIONS OF:

3RD FLOOR FRAMING PLAN

LANDINGS
RACK

REV. 2
REV. 1

DATE

Oct. 17th,
2015

PROJECT

11 BROWN
ST.

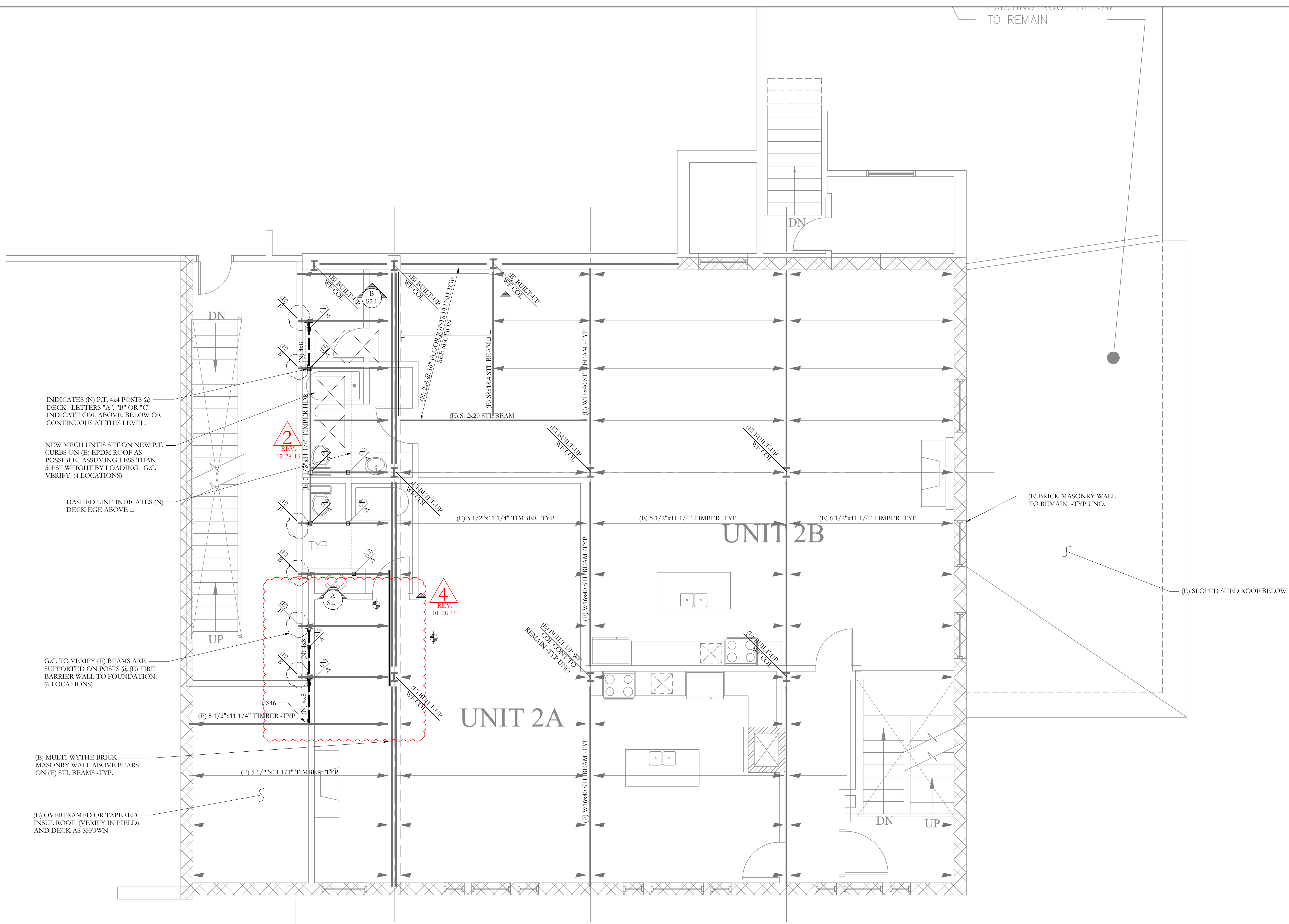
DRAWN BY

MKL

CHECK BY

ACJ

S1.3



INDICATES (N) P.T. 4x4 POSTS @ DECK. LETTERS "A", "B" OR "C" INDICATE COL ABOVE, BELOW OR CONTINUOUS AT THIS LEVEL.

NEW MECH UNITS SET ON NEW P.T. CURBS ON (E) EPDM ROOF AS POSSIBLE. ASSUMING LESS THAN 50PSF WEIGHT BY LOADING. G.C. VERIFY. (4 LOCATIONS)

DASHED LINE INDICATES (N) DECK EDGE ABOVE ±

G.C. TO VERIFY (E) BEAMS ARE SUPPORTED ON POSTS @ (E) FIRE BARRIER WALL TO FOUNDATION. (6 LOCATIONS)

(E) MULTI-WYTHE BRICK MASONRY WALL ABOVE BEARS ON (E) STL. BEAMS -TYP.

(E) OVERFRAMED OR TAPERED INSUL. ROOF (VERIFY IN FIELD) AND DECK AS SHOWN.

KIMBALL CT. 11 BROWN ST.
(NO WORK)

3RD FLOOR FRAMING PLAN
SCALE 1/4"=1'-0"

NOTES:
1. EXISTING FLOOR DECKING IS 3" T+G PLANKS W/ 1" WOOD FLOORING. -TYP TO REMAIN UNO.
2. SEE GENERAL NOTES FOR ADDITIONAL INFORMATION.

FRAMING PLAN SYMBOLS KEY	
□	WOOD POST
○	STEEL COLUMN
(X)	NUMBER OF WOOD STUDS IN POST BELOW
A	COLUMN ABOVE THIS LEVEL
C	COLUMN CONTINUOUS THROUGH THIS LEVEL
←	JOIST BEARING
—	CONTINUOUS JOIST WITH INTERMEDIATE BEARING
—	FLUSH FRAMED JOIST BEARING WITH HANGER
—	WOOD STUD BEARING WALL BELOW
⊘	(E) MULTI-WYTHE BRICK MASONRY WALL TO REMAIN
—	NUMBER OF TRIM STUDS UNDER HEADER
—	NUMBER OF KING STUDS ADJACENT TO HEADER

Structural Integrity
Consulting Engineers, Inc.

77 Oak Street
Portland, ME, 04101
p. 207-774-4614
f. 866-793-7835
www.structuralintegrity.com

AARON C. JONES
No. 10968
LICENSED PROFESSIONAL ENGINEER

10/17/15

BUILD WITH CONFIDENCE
©2014 Structural Integrity Consulting Engineers, Inc.
SI# 15-0216