

MARK
MUELLER
ARCHITECTS
A.I.A.

100 Commercial Street
Suite 205
Portland, Maine 04101
Phone: 207.774.9057
Fax: 207.773.3851
Email: mark@muellerarchitects.com

©COPYRIGHT
MUELLER ARCHITECTS, LLC

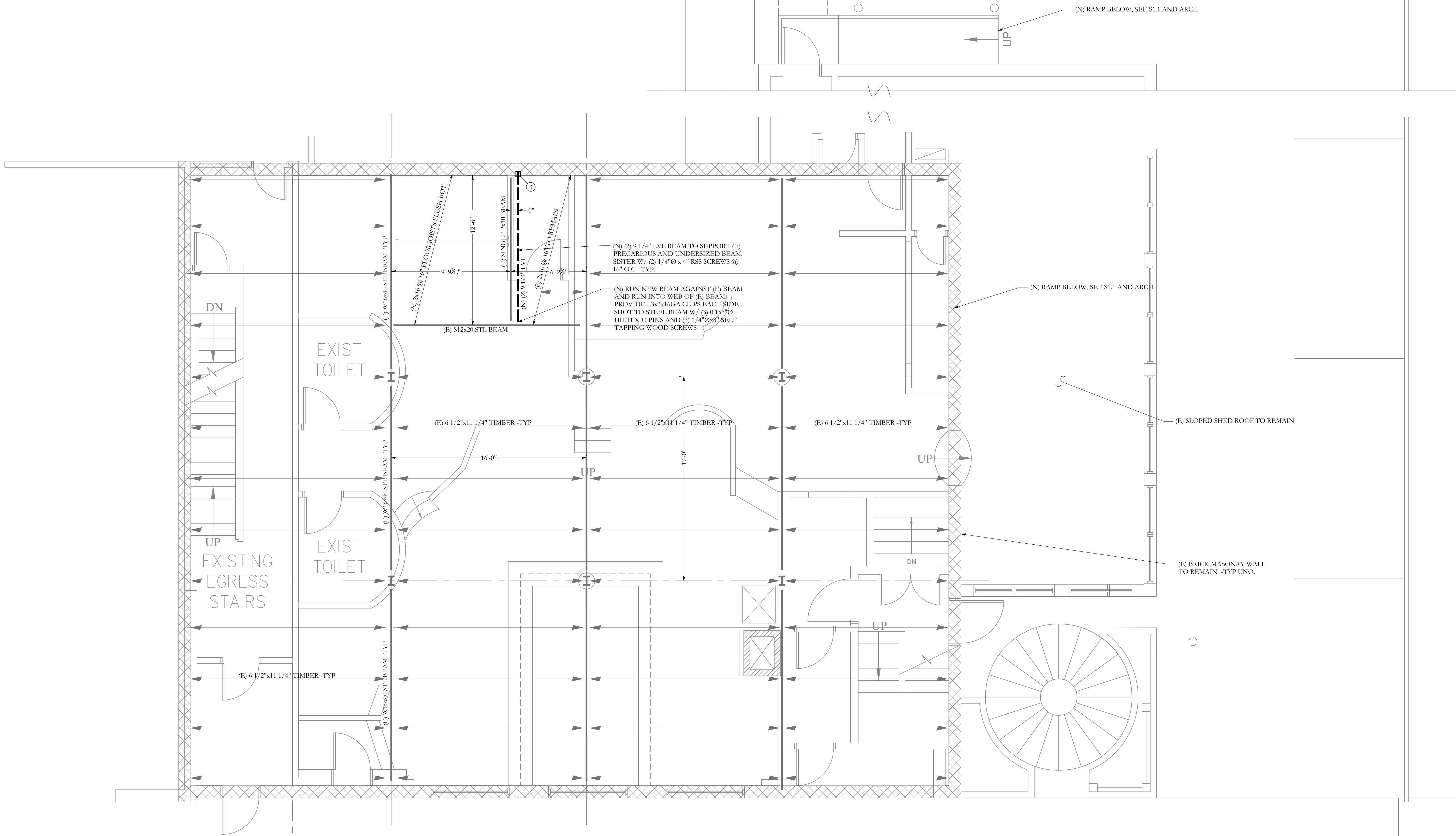
EXISTING BUILDING
11 BROWN STREET
PORTLAND, MAINE 04101

REVISIONS OF

2ND FLOOR FRAMING PLAN

DATE: Oct. 17th, 2015
PROJECT: 11 BROWN ST.
DRAWN BY: MKL
CHECK BY: ACJ

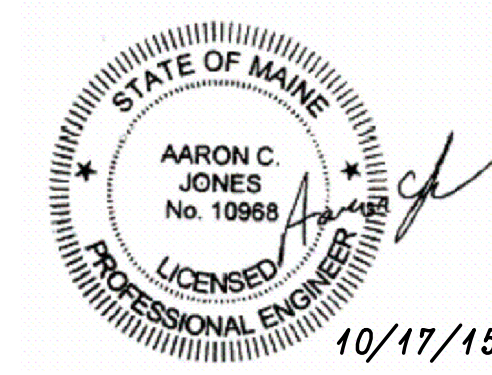
S1.2



KIMBALL CT. 11 BROWN ST.
(NO WORK)

2ND FLOOR FRAMING PLAN
SCALE 1/4"=1'-0"
NOTES:
1. EXISTING FLOOR DECKING IS 3" T+G PLANKS W/ 1" WOOD FLOORING. -TYP TO REMAIN UNO.
2. SEE GENERAL NOTES FOR ADDITIONAL INFORMATION.

FRAMING PLAN SYMBOLS KEY	
□	WOOD POST
○	STEEL COLUMN
⊗	NUMBER OF WOOD STUDS IN POST BELOW
A	COLUMN ABOVE THIS LEVEL
C	COLUMN CONTINUOUS THROUGH THIS LEVEL
←	JOIST BEARING
—	CONTINUOUS JOIST WITH INTERMEDIATE BEARING
—	FLUSH FRAMED JOIST BEARING WITH HANGER
—	WOOD STUD BEARING WALL BELOW
⊗	(E) MULTI-WYTHE BRICK MASONRY WALL TO REMAIN



Structural Integrity
Consulting Engineers, Inc.
77 Oak Street
Portland, ME, 04101
p. 207-774-614
f. 866-793-7835
www.structuralintegrity.com
BUILD WITH CONFIDENCE
©2015 Structural Integrity Consulting Engineers, Inc.
SI# 15-0216