

MARK  
MUELLER  
ARCHITECTS  
A.I.A.

100 Commercial Street  
Suite 205  
Portland, Maine 04101  
Phone: 207.774.9057  
Fax: 207.773.3851  
Email: mark@muellerarchitects.com

©COPYRIGHT  
MUELLER ARCHITECTS, LLC

EXISTING BUILDING  
11 BROWN STREET  
PORTLAND, MAINE 04101

REVISIONS OF

1ST FLOOR FRAMING PLAN

REVISIONS  
1. REV. 1  
2. REV. 2

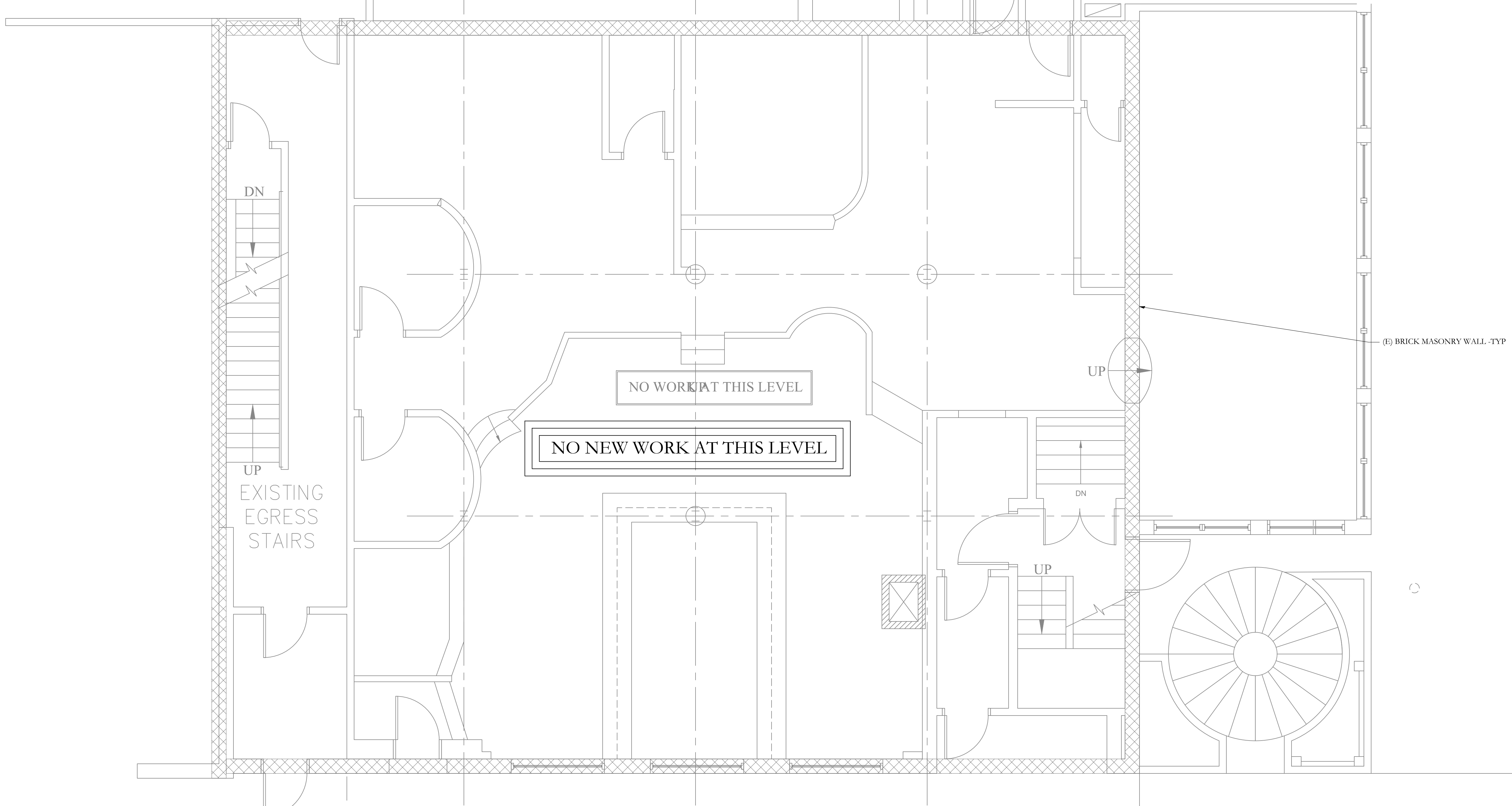
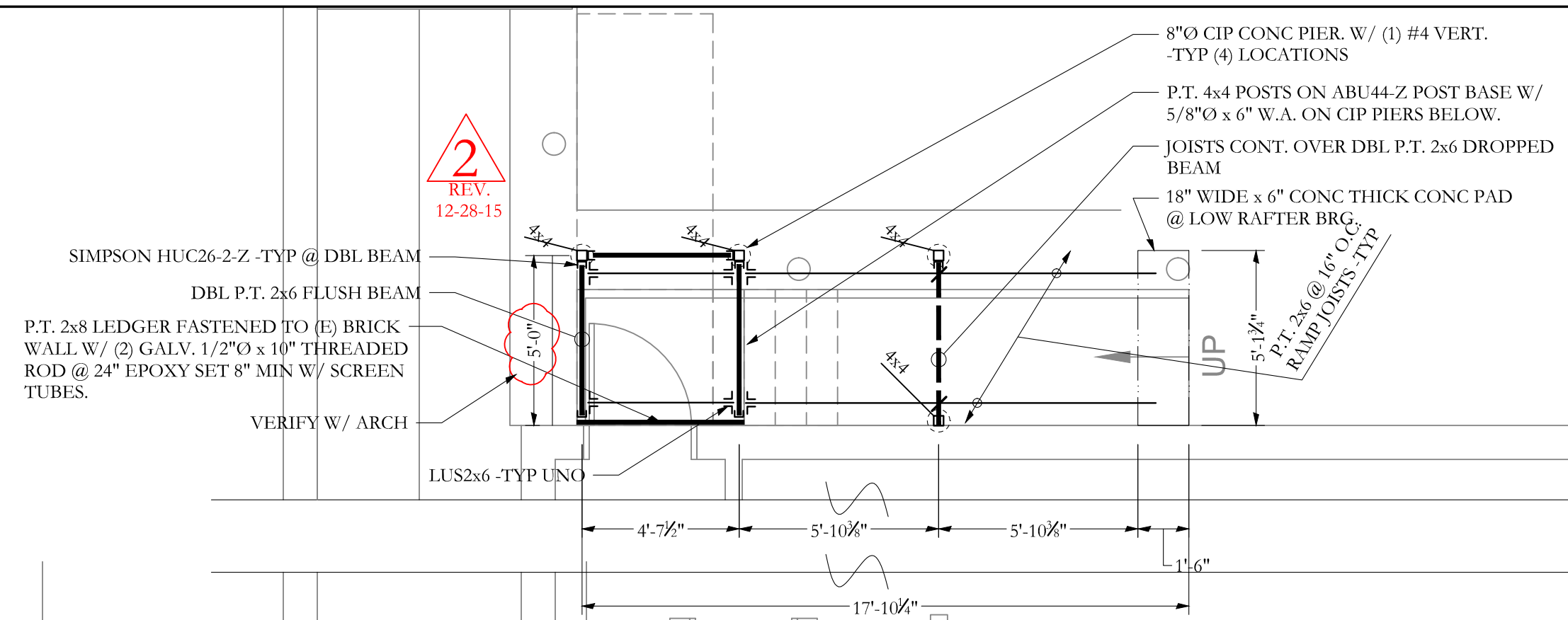
DATE  
Oct. 17th,  
2015

PROJECT  
11 BROWN  
ST.

DRAWN BY  
MCL

CHECK BY  
ACJ

S1.1



KIMBALL CT. 11 BROWN ST.  
(NO WORK)

1ST FLOOR FRAMING PLAN  
NOTES:  
1. SEE GENERAL STRUCTURAL NOTES FOR MORE INFO.  
SCALE 1/4"=1'-0"

FRAMING PLAN SYMBOLS KEY	
□	WOOD POST
○	STEEL COLUMN
(X)	NUMBER OF WOOD STUDS IN POST BELOW
A	COLUMN ABOVE THIS LEVEL
C	COLUMN CONTINUOUS THROUGH THIS LEVEL
—	JOIST BEARING
—	CONTINUOUS JOIST WITH INTERMEDIATE BEARING
—	FLUSH FRAMED JOIST BEARING WITH HANGER
—	WOOD STUD BEARING WALL BELOW
(E)	MULTI-WYTHE BRICK MASONRY WALL TO REMAIN
—	NUMBER OF TRIM STUDS UNDER HEADER
—	NUMBER OF KING STUDS ADJACENT TO HEADER

**Structural Integrity**  
Consulting Engineers, Inc.

77 Oak Street  
Portland, ME, 04101  
p. 207-774-6144  
f. 866-793-7835  
www.structuralintegrity.com

**AARON C. JONES**  
No. 10968  
LICENSED PROFESSIONAL ENGINEER

10/17/15

**BUILD WITH CONFIDENCE**  
©2015 Structural Integrity Consulting Engineers, Inc.  
SI# 15-0216