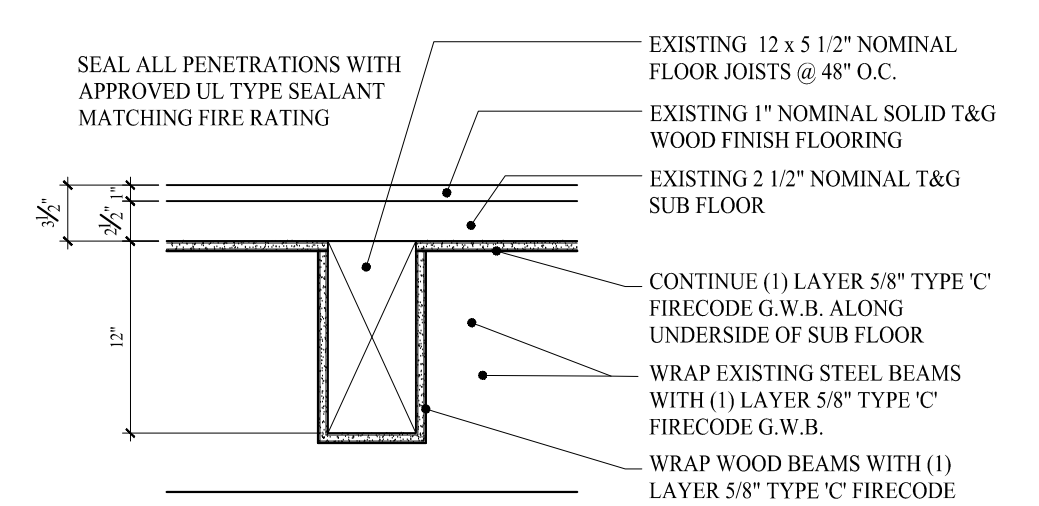
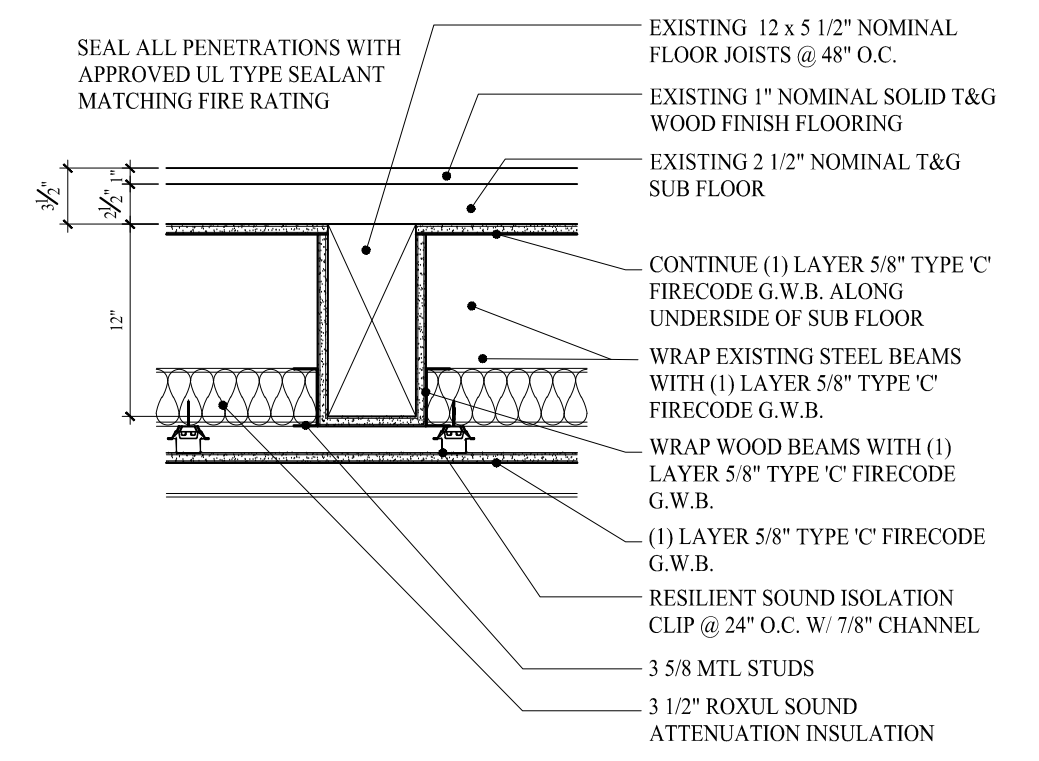


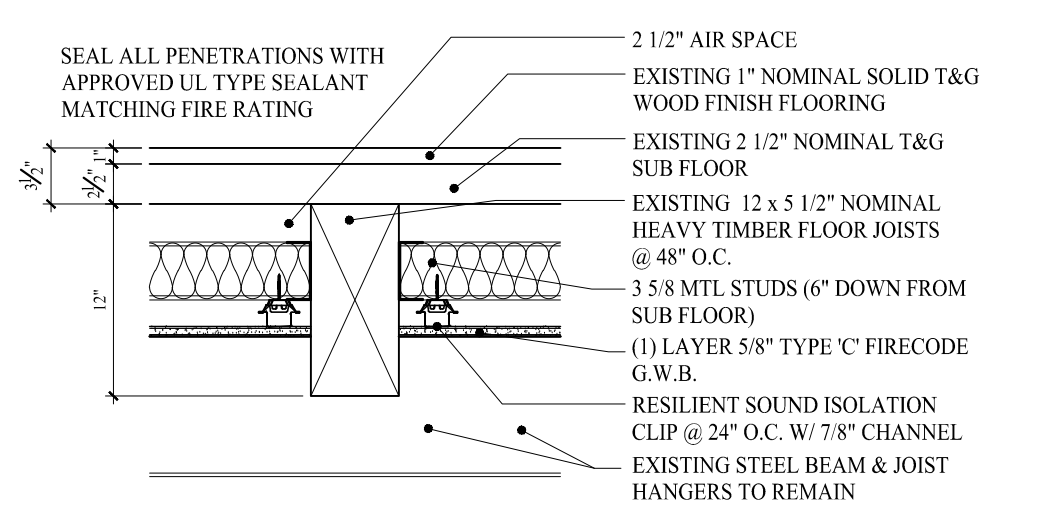
**ROOF PLAN**  
SCALE: 1/8"=1'-0"



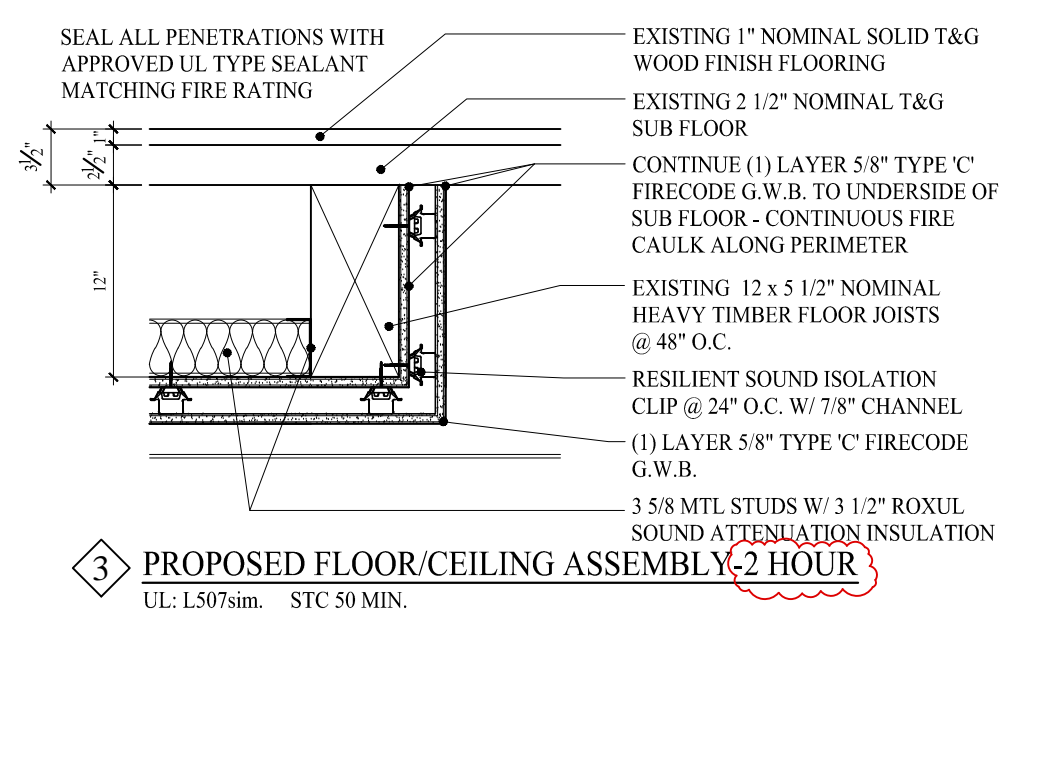
**EXISTING FLOOR/CEILING ASSEMBLY-1 HOUR**  
UL-L501 SIM STC 50 MIN.



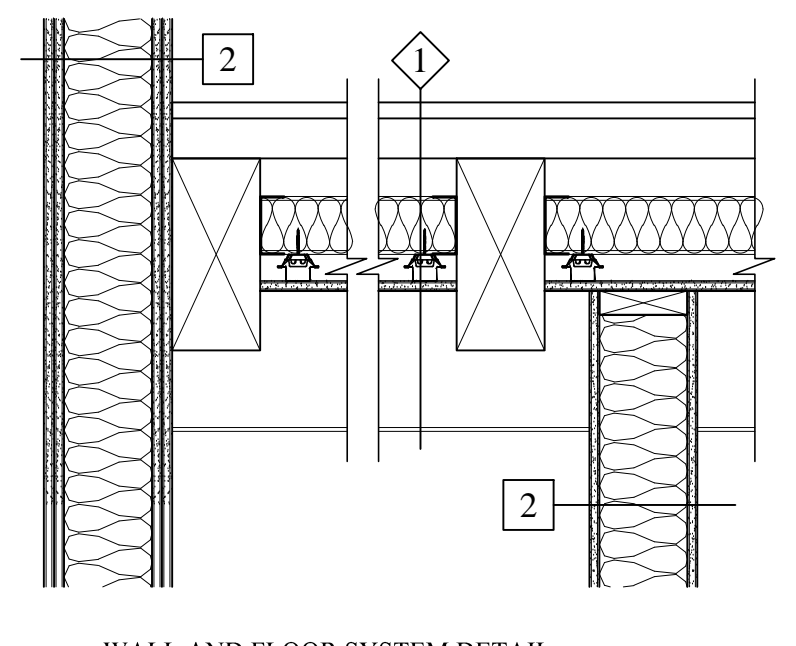
**EXISTING FLOOR/CEILING ASSEMBLY-1 HOUR**  
UL-L501 SIM STC 50 MIN.



**PROPOSED FLOOR/CEILING ASSEMBLY-1 HOUR**  
UL-L507sim STC 50 MIN.



**PROPOSED FLOOR/CEILING ASSEMBLY-2 HOUR**  
UL-L507sim STC 50 MIN.



WALL AND FLOOR SYSTEM DETAIL

**WALL LEGEND**

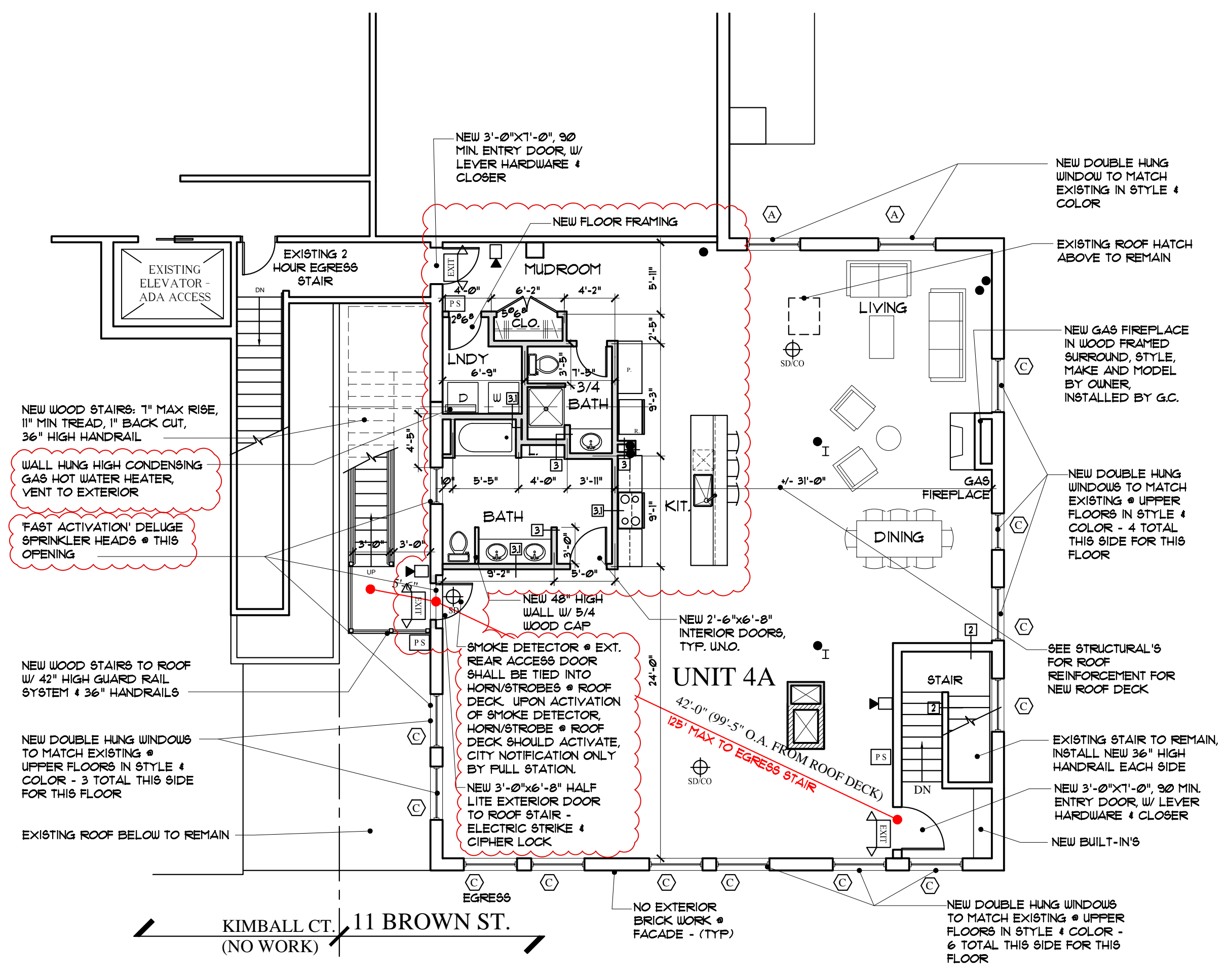
	NEW WALL
	EXISTING WALL
	DEMOLISHED WALL

**LIFE SAFETY LEGEND:**

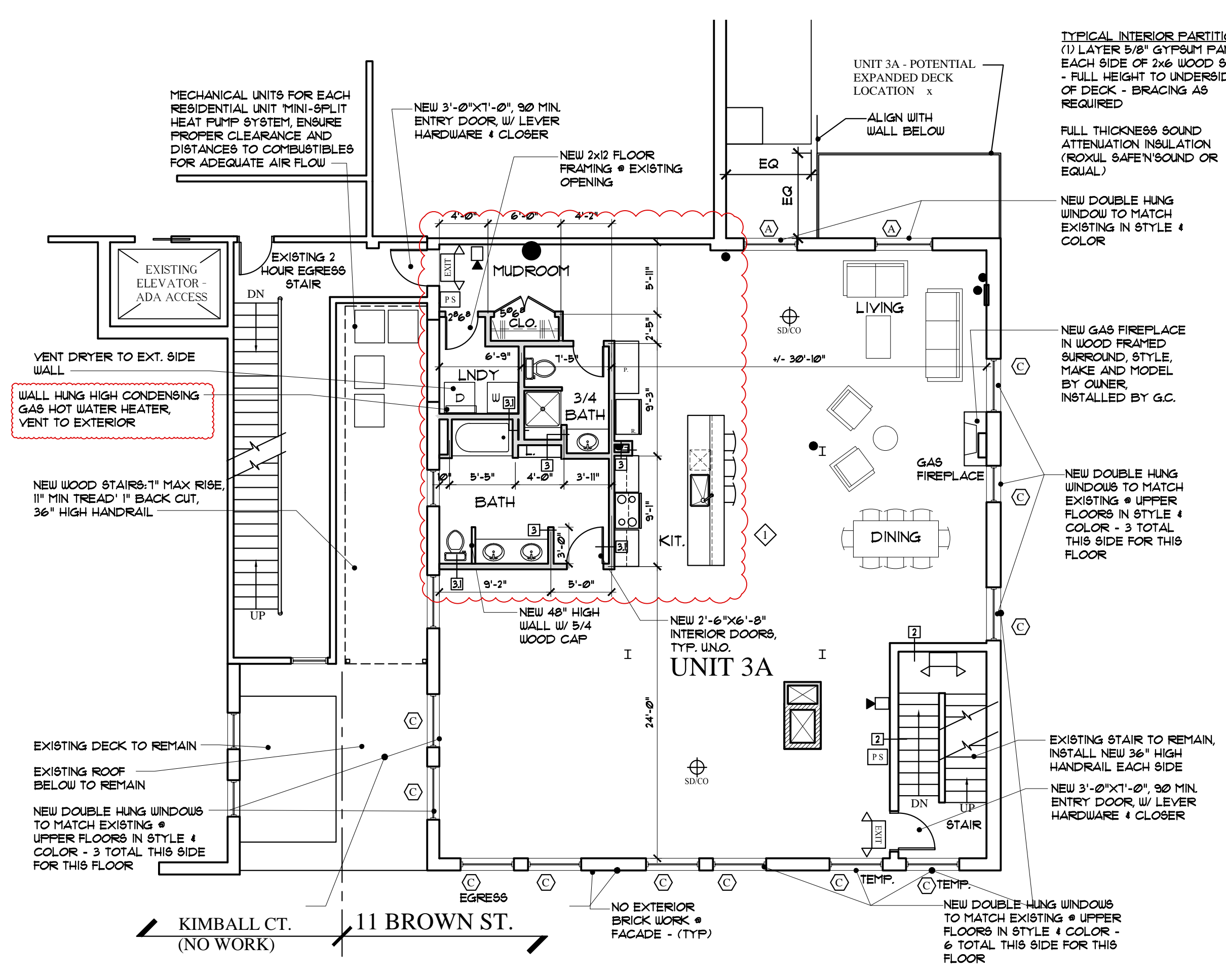
	EMERGENCY BACKUP LIGHT
	EXIT LIGHT
	EXIT EMERGENCY BACKUP LIGHT COMBO
	SMOKE DETECTOR
	SMOKE & CO DETECTOR
	HORNSTROBE
	STROBE
	FIRE EXTINGUISHER IN RECESSED CABINET
	PULL STATION

**LIFE SAFETY NOTES:**

LIFE SAFETY AND FIRE ALARM SYSTEMS SHALL BE DESIGNED AND INSTALLED PER NFPA 72, BY A CITY/STATE APPROVED CONTRACTOR WITH A SEPARATE PERMIT. ALL STROBES TO BE 30 CANDELA UNLESS OTHERWISE NOTED. SYSTEM SHALL BE SUPERVISED BY AN OFF-SITE CERTIFIED BY THE CITY OF PORTLAND THIRD PARTY. PERMITTING AND INSTALLATION OF THE LIFE SYSTEM SHALL BE PERMITTED AND PERFORMED BY A CITY APPROVED CONTRACTOR



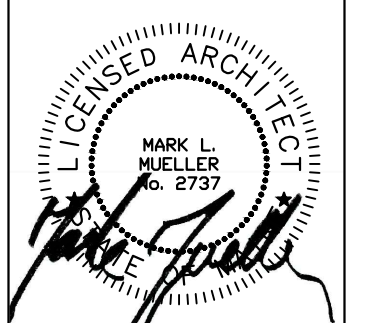
**FOURTH FLOOR PLAN**  
SCALE: 1/8"=1'-0"



**THIRD FLOOR PLAN**  
SCALE: 1/8"=1'-0"

**FOR CONSTRUCTION**

**REVISED: FEBRUARY 15, 2016**  
**BUILDING PERMIT: OCTOBER 20, 2015**



**MARK MUELLER ARCHITECTS**  
A.I.A.  
100 Commercial Street  
Suite 205  
Portland, Maine 04101  
Phone: 207.774.9057  
Email: rfm@muellerarchitects.com

© COPYRIGHT 2015  
MARK MUELLER ARCHITECTS

**EASTMAN BLOCK CONDOS**  
11 BROWN STREET  
PORTLAND, MAINE

**THIRD/FOURTH FLOOR PLANS**

DATE	11-10-15
PROJECT	11 BROWN STREET
DRAWN BY	M.M./T.D.
CHECK BY	M.M.

**A-1.2**