

© 2017 RYAN SENATORE ARCHITECTURE

**SUITE 502 TENANT FIT-UP**  
482 CONGRESS STREET  
PORTLAND, MAINE



**RYAN SENATORE ARCHITECTURE**  
565 CONGRESS STREET  
PORTLAND, MAINE 04101  
207-650-6414  
senatorearchitecture.com

CONSULTANTS:

REVISIONS:

DATE: APRIL 06, 2017

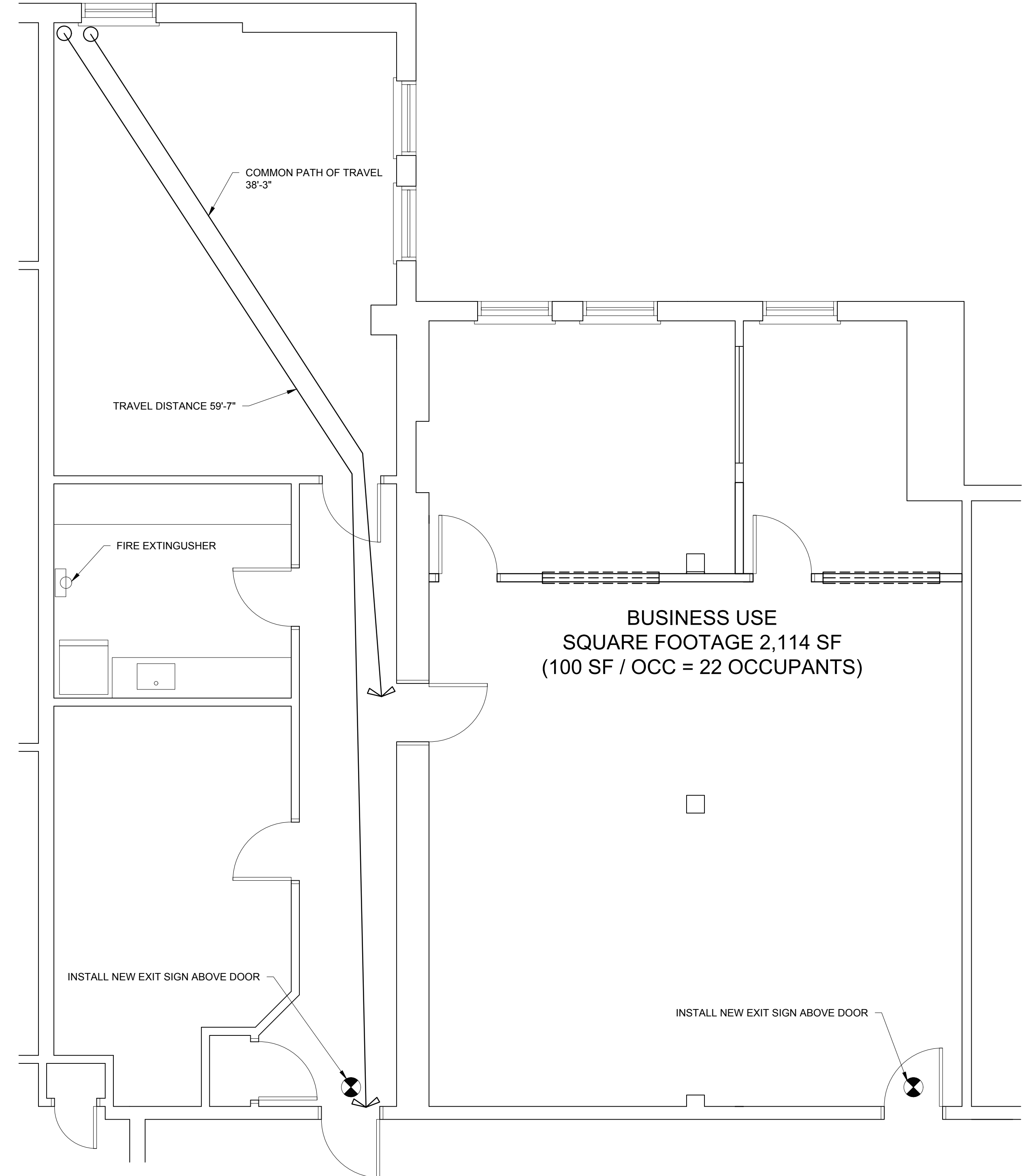
PROJECT No. 1713

DRAWN BY: RJS

CHECKED BY: RJS

SCALE: AS NOTED

SHEET TITLE:  
**LIFE SAFETY PLAN**



1 LIFE SAFETY PLAN  
1/4" = 1'-0"

**G1-1**