

© 2017 RYAN SENATORE ARCHITECTURE

SUITE 502 TENANT FIT-UP
482 CONGRESS STREET
PORTLAND, MAINE



RYAN SENATORE ARCHITECTURE
565 CONGRESS STREET
PORTLAND, MAINE 04101
207-650-6414
senatorearchitecture.com

CONSULTANTS:

REVISIONS:

DATE: APRIL 06, 2017

PROJECT No. 1713

DRAWN BY: RJS

CHECKED BY: RJS

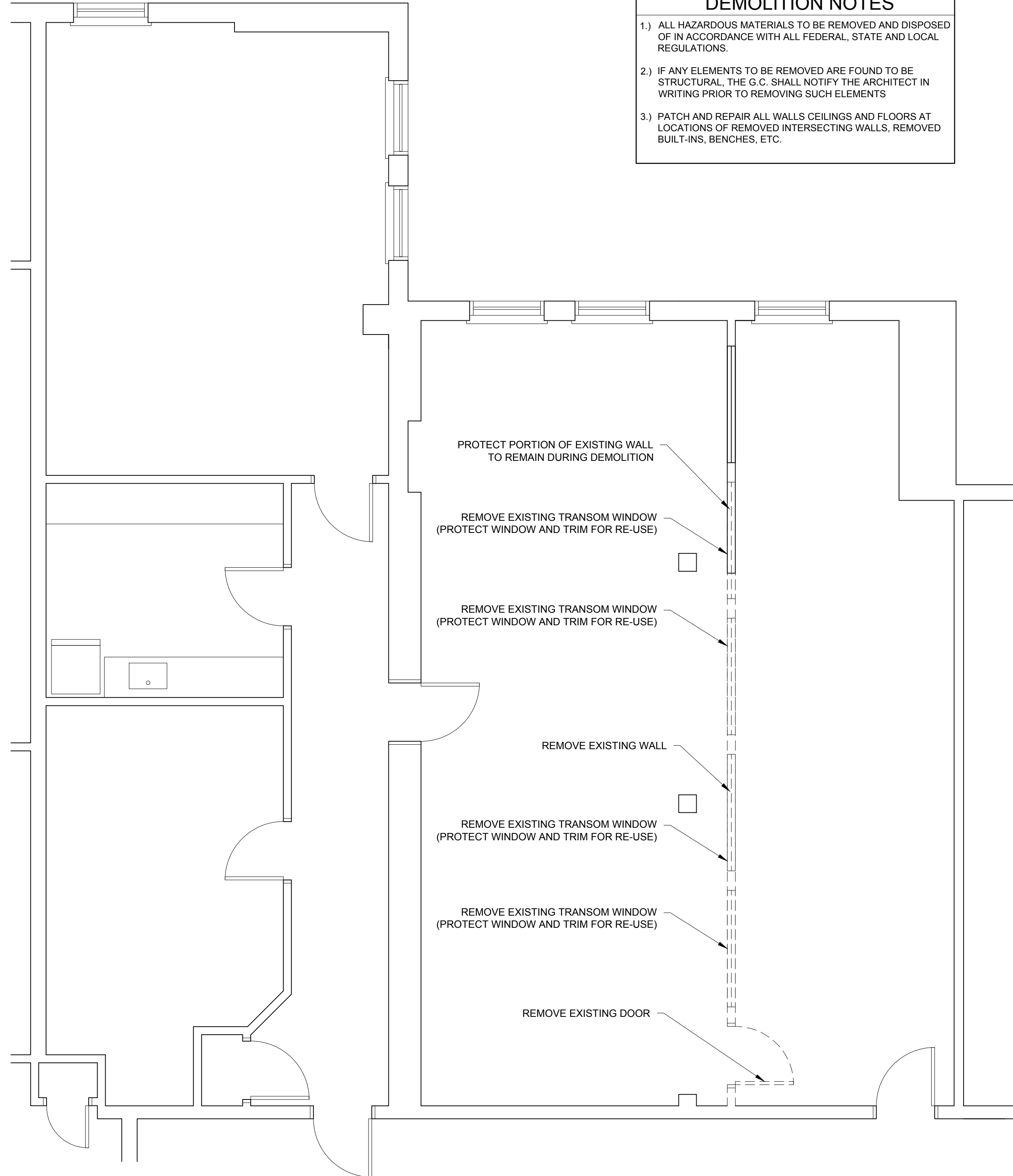
SCALE: AS NOTED

SHEET TITLE:
DEMOLITION PLAN AND FLOOR PLAN

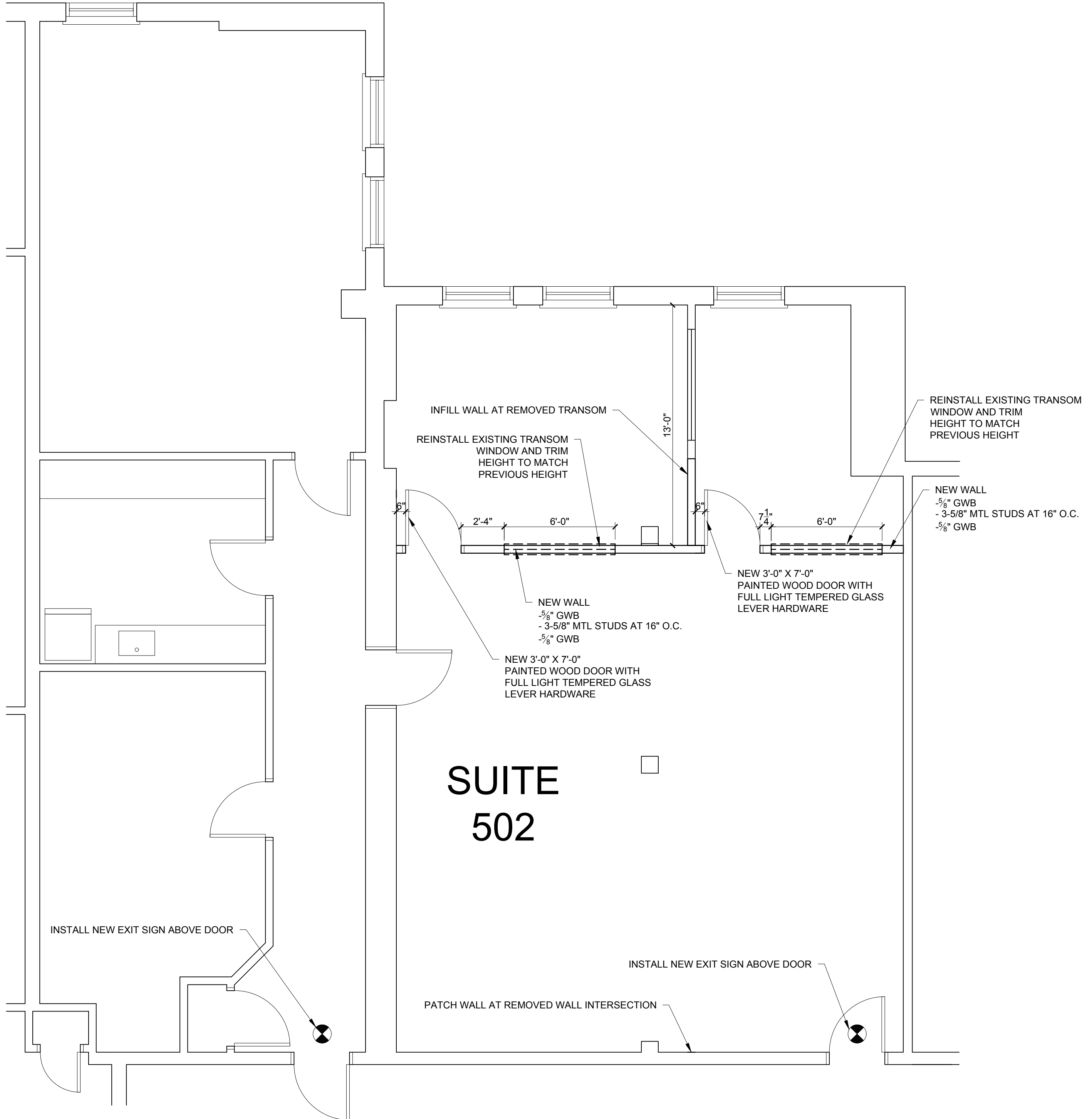
A1-0

DEMOLITION NOTES

- 1.) ALL HAZARDOUS MATERIALS TO BE REMOVED AND DISPOSED OF IN ACCORDANCE WITH ALL FEDERAL, STATE AND LOCAL REGULATIONS.
- 2.) IF ANY ELEMENTS TO BE REMOVED ARE FOUND TO BE STRUCTURAL, THE G.C. SHALL NOTIFY THE ARCHITECT IN WRITING PRIOR TO REMOVING SUCH ELEMENTS
- 3.) PATCH AND REPAIR ALL WALLS CEILINGS AND FLOORS AT LOCATIONS OF REMOVED INTERSECTING WALLS, REMOVED BUILT-INS, BENCHES, ETC.



2 DEMOLITION PLAN
1/4" = 1'-0"



1 TENANT FLOOR PLAN
1/4" = 1'-0"