

**MONUMENT SQUARE
BUS SHELTER**

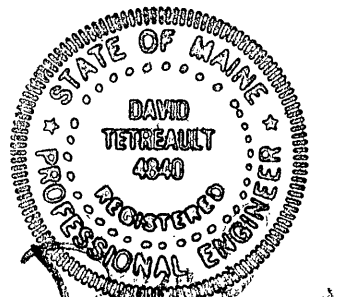
CONGRESS STREET
PORTLAND, MAINE

ARTISTS:

HADDAD|DRUGAN LLC
2803 S. Bayview Street
Seattle, Washington 98144
www.haddad-drugan.com
206-523-4256

**STRUCTURAL
ENGINEER:**

Structural Design Consulting, Inc.
22 Oakmont Drive
Old Orchard Beach, Maine 04064
207-934-8038

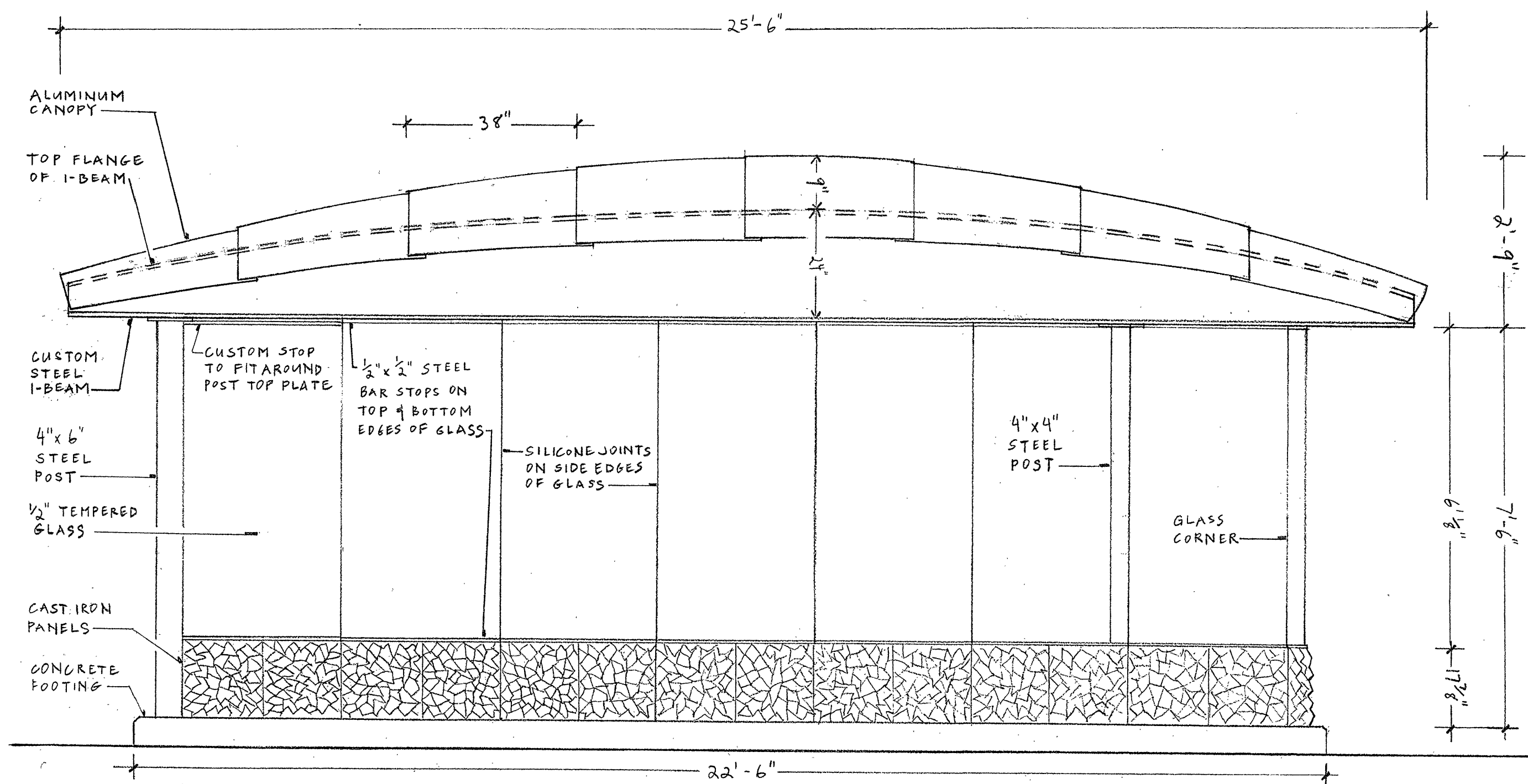


David T. Dragan

JULY 2004

BASE

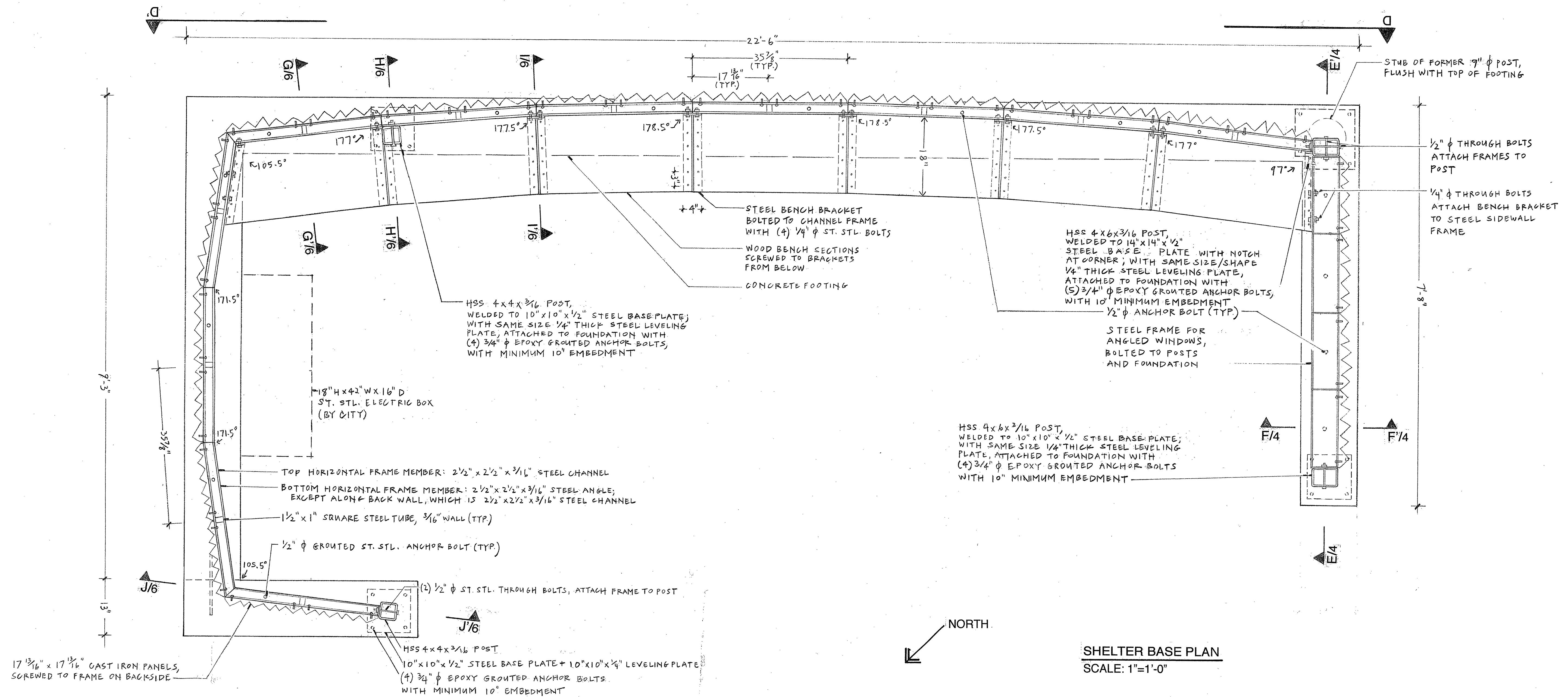
SHEET 2



(SOUTHEAST/BACK) ELEVATION D-D'
SCALE: 1/2"=1'-0"

NOTES:

1. ALL STEEL IS A-36. SURFACE PREPARATION, SSPC-SP-6, COMMERCIAL BLAST CLEANING. AFTER FABRICATION, PAINT WITH ONE COAT (3.0-6.0 MILLIMETERS) OF EPOXY PRIMER, AND ONE COAT (2.0-3.0 MILLIMETERS) OF INDUSTRIAL URETHANE—CHARCOAL GRAY COLOR.
2. SHEET ALUMINUM FOR CANOPY IS ALLOY 5052. ALUMINUM CHANNEL FOR RAFTERS IS A 6000-SERIES ALLOY. ALL ALUMINUM IS 3-MINUTE ETCHED, THEN ANODIZED WITH A "BRASS" COLOR AND SATIN FINISH. PRIOR TO ANODIZING, ALUMINUM IS FINISHED WITH A RANDOM ORBIT SANDING, SO NO SCRATCHES ARE IN THE SURFACES. FABRICATOR TO PROVIDE SANDED SAMPLE PIECES OF ACTUAL MATERIAL USED FOR FABRICATION TO THE ANODIZER, TO MAKE COLOR SAMPLES.
3. WOOD FOR BENCH IS DOUGLAS FIR, WITH A CLEAR WATERPROOF SEALANT.
4. GLAZING FOR THE NORTHEAST, NORTHWEST, AND SOUTHEAST WALLS IS CLEAR 1/2"-THICK TEMPERED PLATE GLASS. GLAZING FOR THE SOUTHWEST WALL IS MADE OF TWO SHEETS OF 1/4"-THICK TEMPERED CLEAR GLASS, LAMINATED WITH A FILM INTERLAYER. SOME FILM IS COLORED BLUE, SOME IS CLEAR WITH A HOLOGRAPH PATTERN.
5. ELECTRIC BOX IS SPECIFIED (WITH ARTIST APPROVAL), PURCHASED, AND INSTALLED BY THE CITY OF PORTLAND.
6. LIGHTS AND CONDUIT ARE PURCHASED AND INSTALLED BY THE CITY OF PORTLAND. ELECTRIC DOWNLIGHTS AND UPLIGHTS ARE METAL HALIDE. USE "HYDREL—G2 BLOCK WEDGE" FIXTURES, IN STANDARD "DESIGNER BLACK" COLOR. LAMP IS 175 WATT, WITH "RED" COLOR FILTER LENS. CONTACT HYDREL (1-818-362-9465, WWW.HYDREL.COM) FOR ORDERING.
7. HEATERS AND CONDUIT ARE PURCHASED AND INSTALLED BY THE CITY. USE FOSTORIA MTM SERIES, MODEL 222-60.
8. AFTER FABRICATING CAST IRON PANELS, LET THEM RUST AND APPLY NAVAL JELLY RUST CONVERTER (PHOSPHORIC ACID).



SHELTER BASE PLAN
SCALE: 1"=1'-0"