

# DOOR SCHEDULE

MARK	DOOR					FRAME				HARDWARE SET	REMARKS
	TYPE	WIDTH	HEIGHT	THK	MATERIAL	TYPE	MATERIAL	HEAD	JAMB		
101	D (EX'G)	EX'G	EX'G	EX'G	ALUM	EX'G	ALUM	EX'G	EX'G	-	ALUMINUM STOREFRONT ENTRANCE, SEE NOTE 3
102A	A	3'-0" (PAIR)	6'-8"	-	-	F1	WOOD	1/4" SIM.	2/4" SIM.	-	SEE NOTE 1, PROVIDE MODEL #J-4537 DOOR STOP
102B	C (EX'G)	EX'G	EX'G	EX'G	WOOD	EX'G	WOOD	EX'G	EX'G	-	DOOR TO REMIAN CLOSED, NOT FOR PUBLIC USE.
103	NOT USED	-	-	-	-	-	-	-	-	-	-
104	B	3'-0"	6'-8"	1 3/4"	WOOD	F2	WOOD	1/4" SIM.	2/4" SIM.	2	-
105	B	3'-0"	6'-8"	1 3/4"	WOOD	F2	WOOD	1/4" SIM.	2/4" SIM.	2	-
106	CASED OPENING	3'-0"	6'-8"	1 3/4"	WOOD	F2	WOOD	1/4" SIM.	2/4" SIM.	-	-
107	E	3'-0"	6'-8"	1 3/4"	WOOD	F2	WOOD	1/4" SIM.	2/4" SIM.	4	DOOR TO REMIAN CLOSED, NOT FOR PUBLIC USE.

## DOOR NOTES

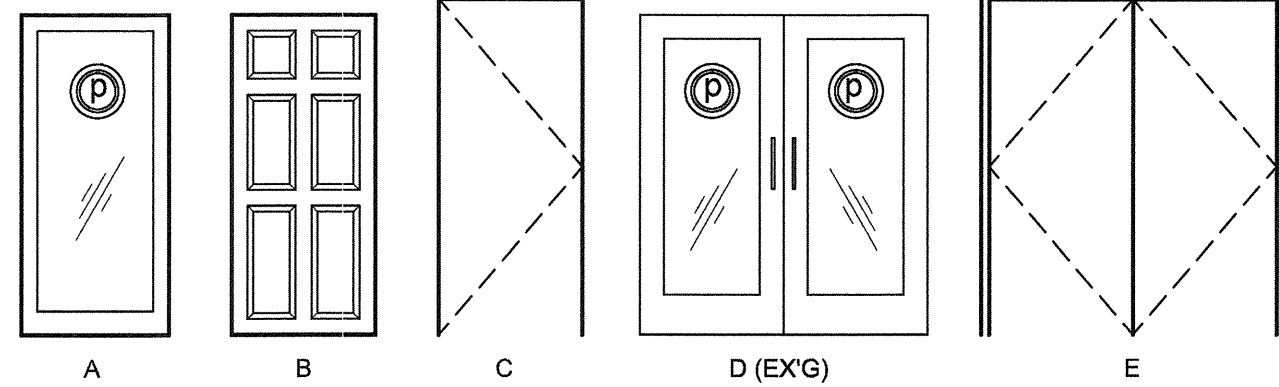
- SIMPSON FRENCH DOOR 1501 FULL GLASS FRAMED WITH #1 RED OAK OR EQUAL WITH 1/2" TEMPERED GLASS
- PRE-HUNG DOORS AND FRAMES TO BE PAINTED, COLOR TBD, COORDINATE WITH PURE BARRE
- G.C. TO VERIFY THAT EXISTING EGRESS DOOR & HARDWARE COMPLIES WITH ACCESSIBILITY REQUIREMENTS. MODIFY EXISTING OR INSTALL NEW HARDWARE FOR COMPLIANCE AS REQUIRED.

## ABBREVIATIONS

- HM HOLLOW METAL
- ALUM ALUMINUM
- EX'G EXISTING

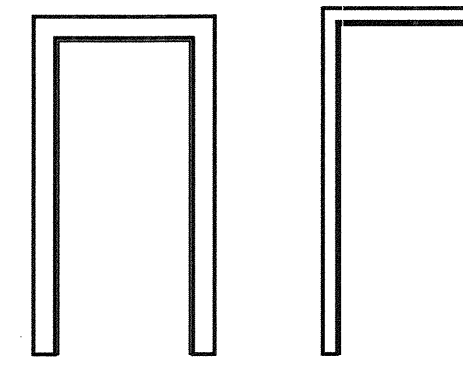
# HARDWARE SCHEDULE

SET NUMBER 1				SET NUMBER 4			
NO.	PART	DESCRIPTION	MFG.	NO.	PART	DESCRIPTION	MFG.
3	PAIR HINGES	BB1279 X 4.5 X 4.5 X US26D	HAGAR	1.5	PAIR HINGES	ECBB1100 - 4.5" X 4.5" - NRP, US26D	HAGER
1	CLOSER	4040BC X AL. (ADJ. TO 5#)	LCN	1	EXIT DEVICE	9300 B 486 / 689 - PRT03 630 THRU-BOLTED ITEM W / SEX BOLTS	DORMA
2	SET PUSH / PULLS	CO-12/CP11 X US26D	KAWNEER	1	RIM CYLINDER	20-057 RIM CYLINDER IC, W / SCHLAGE E KEYWAY (LARGE FORMAT) - 26D - W/ 2 SECURITY KEYS AND 1 CORE KEY PER LOCK, 1 BITTED	SCHLAGE
SET NUMBER 2				SET NUMBER 3			
NO.	PART	DESCRIPTION	MFG.	NO.	PART	DESCRIPTION	MFG.
1.5	PAIR HINGES	BB1279 X 4.5 X 4.5 X US26D	HAGAR	1	LATCHGUARD	LG100Z/SF STRAIGHT WPIN W / SEX BOLTS	LATCHGUARD
1	PRIVACY LOCKSET	AU5302LN X US26D	YALE	1	THRESHOLD	36" ALUM MILL ADA COMPLIANT	POSTEL
NO.	PART	DESCRIPTION	MFG.	NO.	PART	DESCRIPTION	MFG.
1	CLASSROOM LOCKSET	AU5307LN X US26D	YALE	1	SWEEP	CONCEALED ALUM MILL VINYL BULB	POSTEL
1.5	PAIR HINGES	BB1279 X 4.5 X 4.5 X US26D	HAGAR	1	SET WEATHER STRIP	JAMBS: KERFED QEBD-500 HEADER: ADHESIVE QDST-675	SCHLEGEL



## 1 DOOR TYPES

SCALE: 1/4" = 1'-0"



## 2 FRAME TYPES

SCALE: 1/4" = 1'-0"

## 11 NOT USED

A4 SCALE:

## 12 DETAIL

A4 SCALE: 1 1/2" = 1'-0"

## 13 DETAIL

A4 SCALE: 1 1/2" = 1'-0"

## 14 DETAIL

A4 SCALE: 1 1/2" = 1'-0"

## 6 NOT USED

A4 SCALE: 1 1/2" = 1'-0"

## 7 DETAIL

A4 SCALE: 1 1/2" = 1'-0"

## 8 DETAIL

A4 SCALE: 1 1/2" = 1'-0"

## 9 DETAIL

A4 SCALE: 1 1/2" = 1'-0"

## 10 TYP. STUDIO WALL DETAIL

A4 SCALE:

## 1 DETAIL

A4 SCALE: 1 1/2" = 1'-0"

## 2 DETAIL

A4 SCALE: 1 1/2" = 1'-0"

## 3 DETAIL

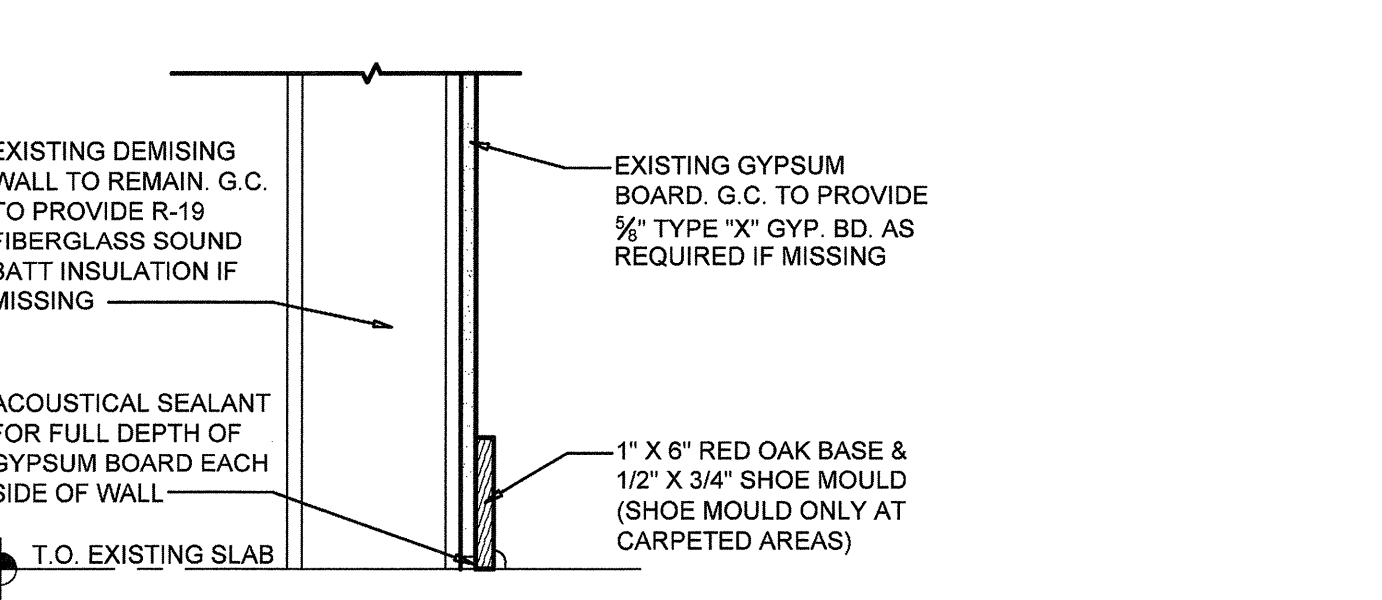
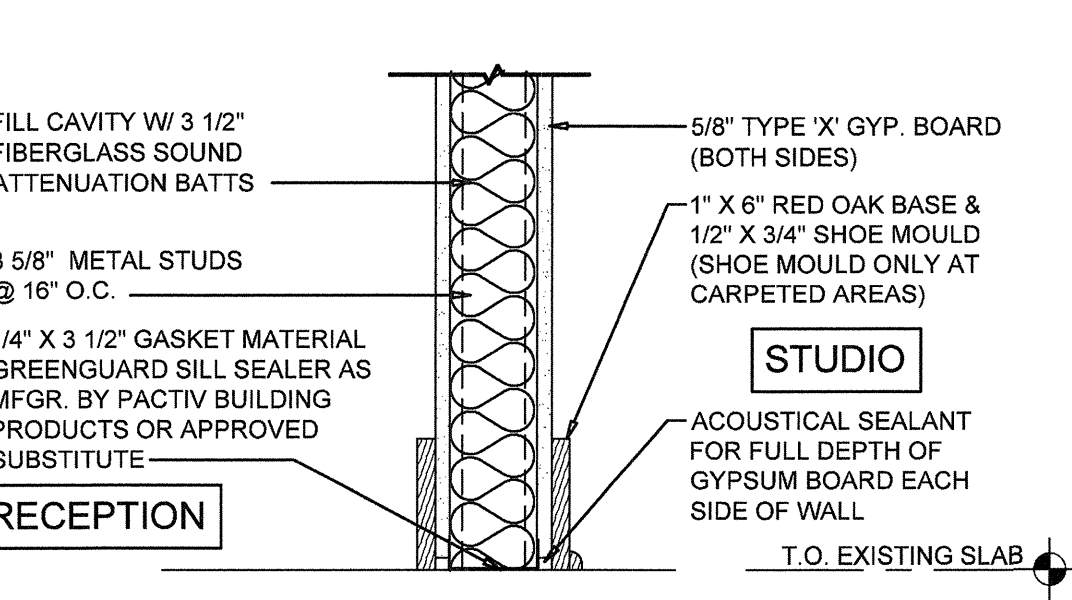
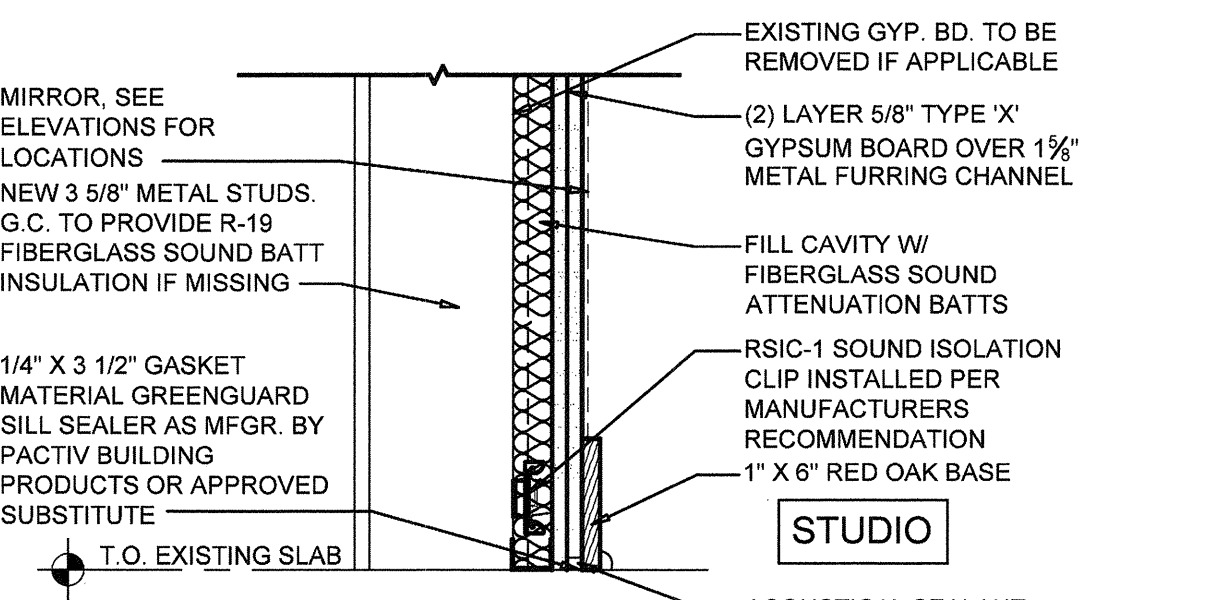
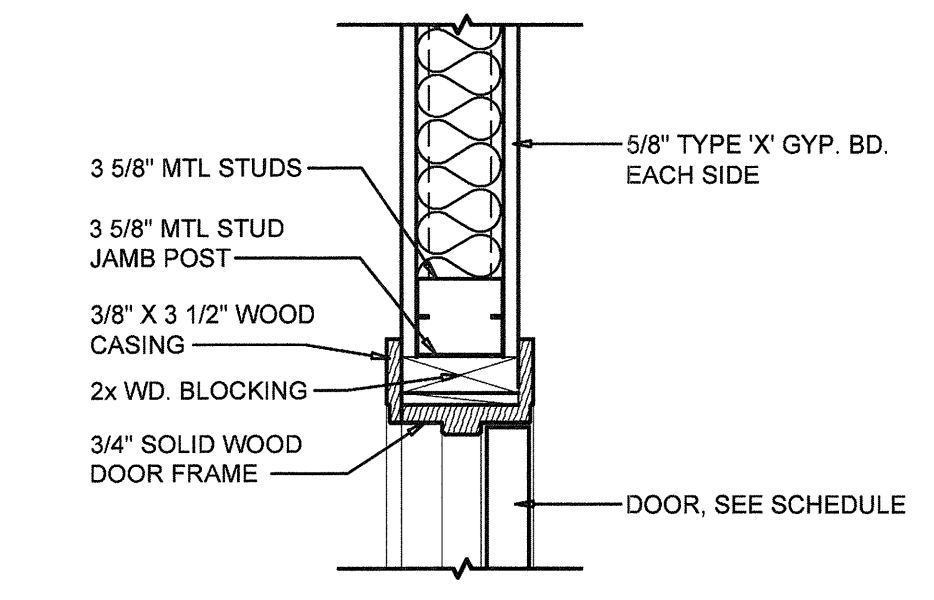
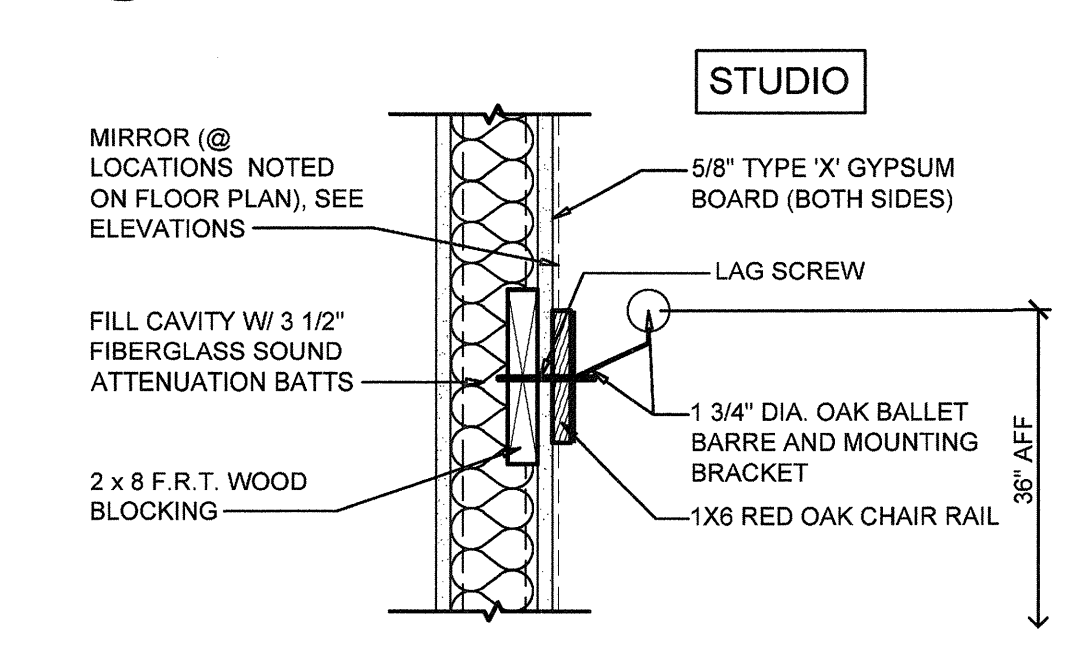
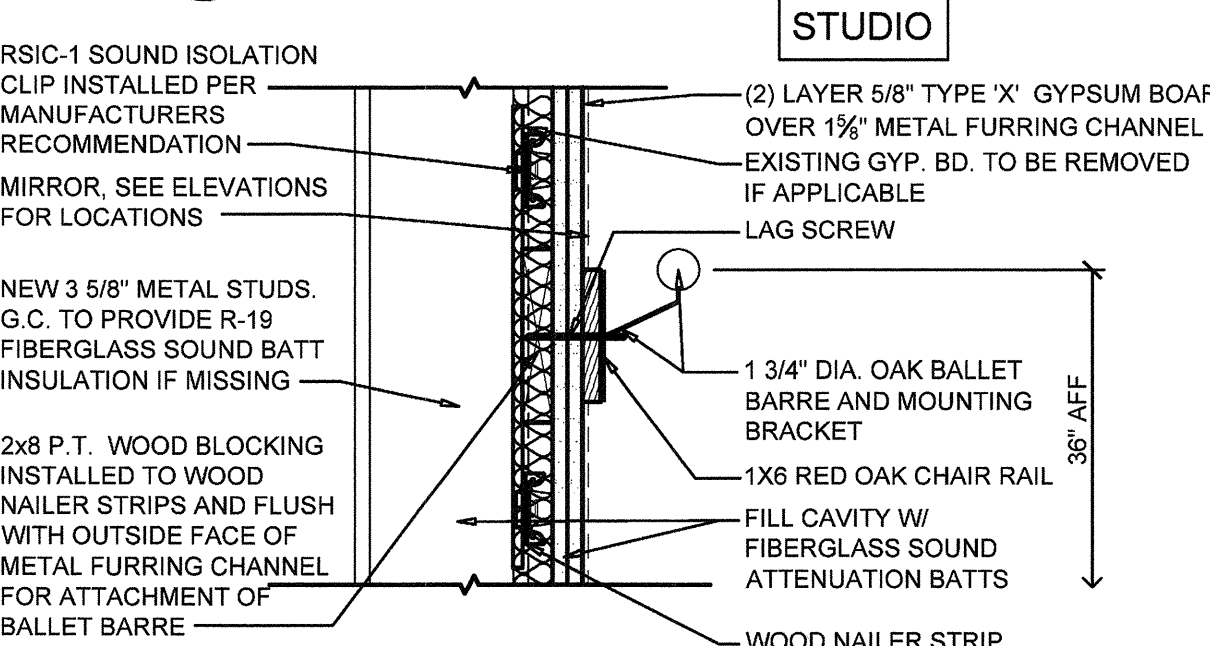
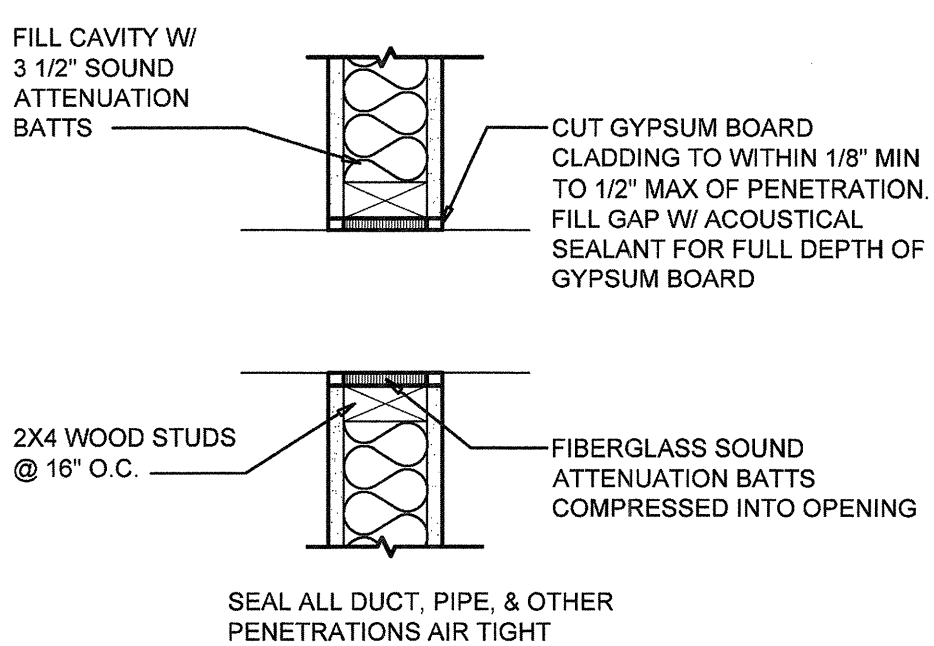
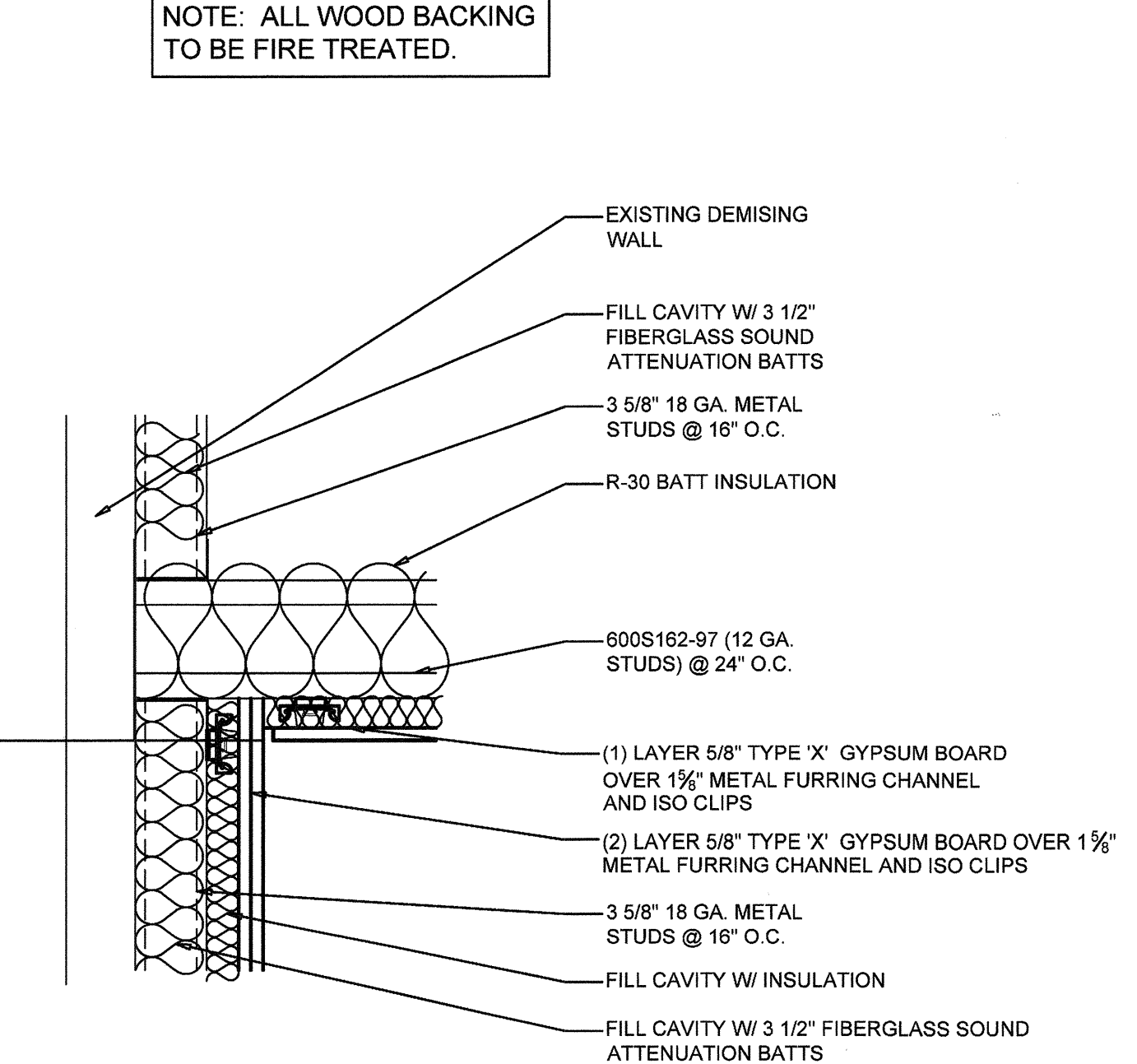
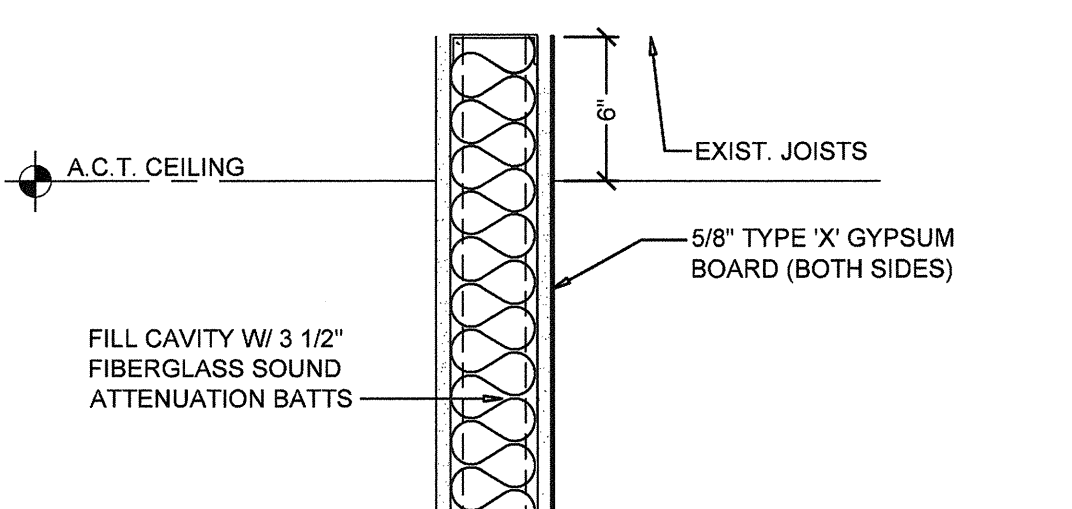
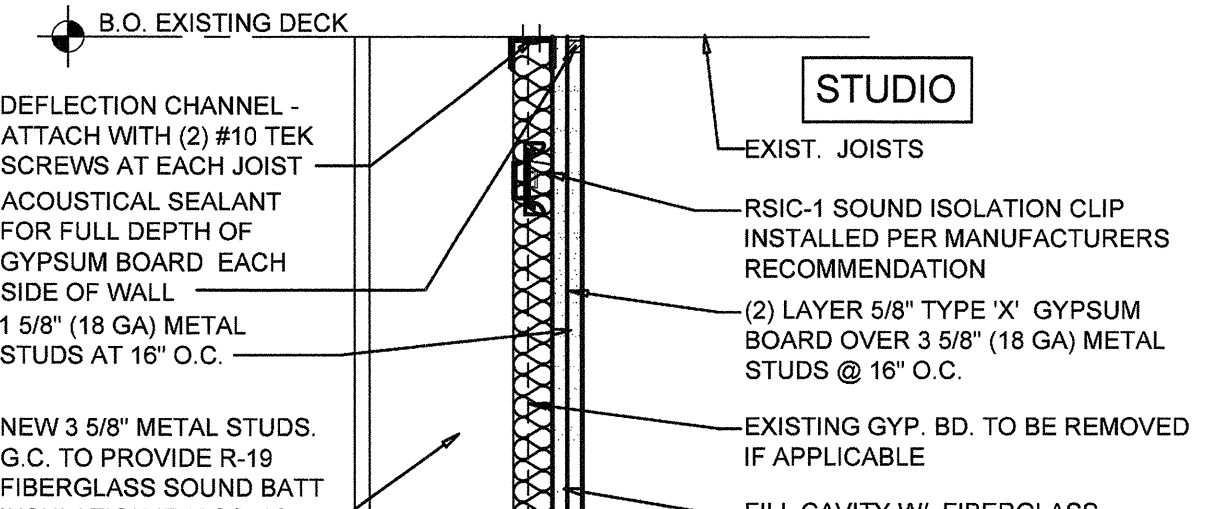
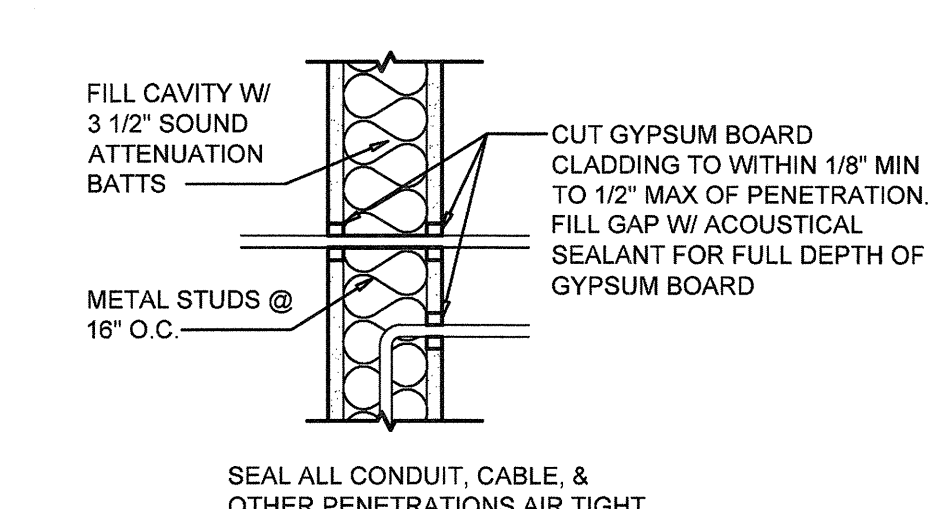
A4 SCALE: 1 1/2" = 1'-0"

## 4 DETAIL

A4 SCALE: 1 1/2" = 1'-0"

## 5 DETAIL

A4 SCALE: 1 1/2" = 1'-0"



ISSUED DATES	
OWNER	11-23-16
BID/PERMIT	11-28-16
REVISIONS	
OWNER	09-01-16