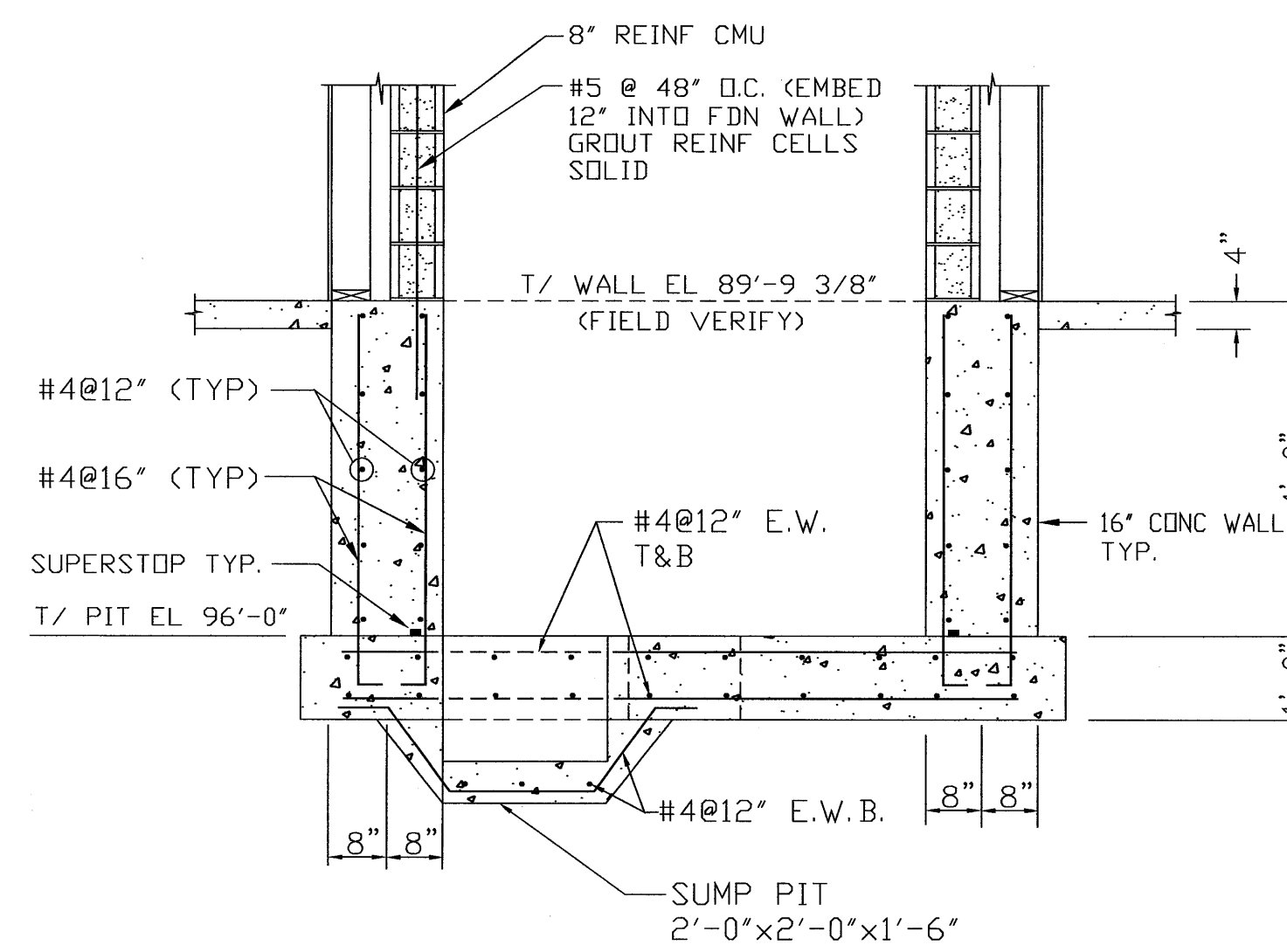
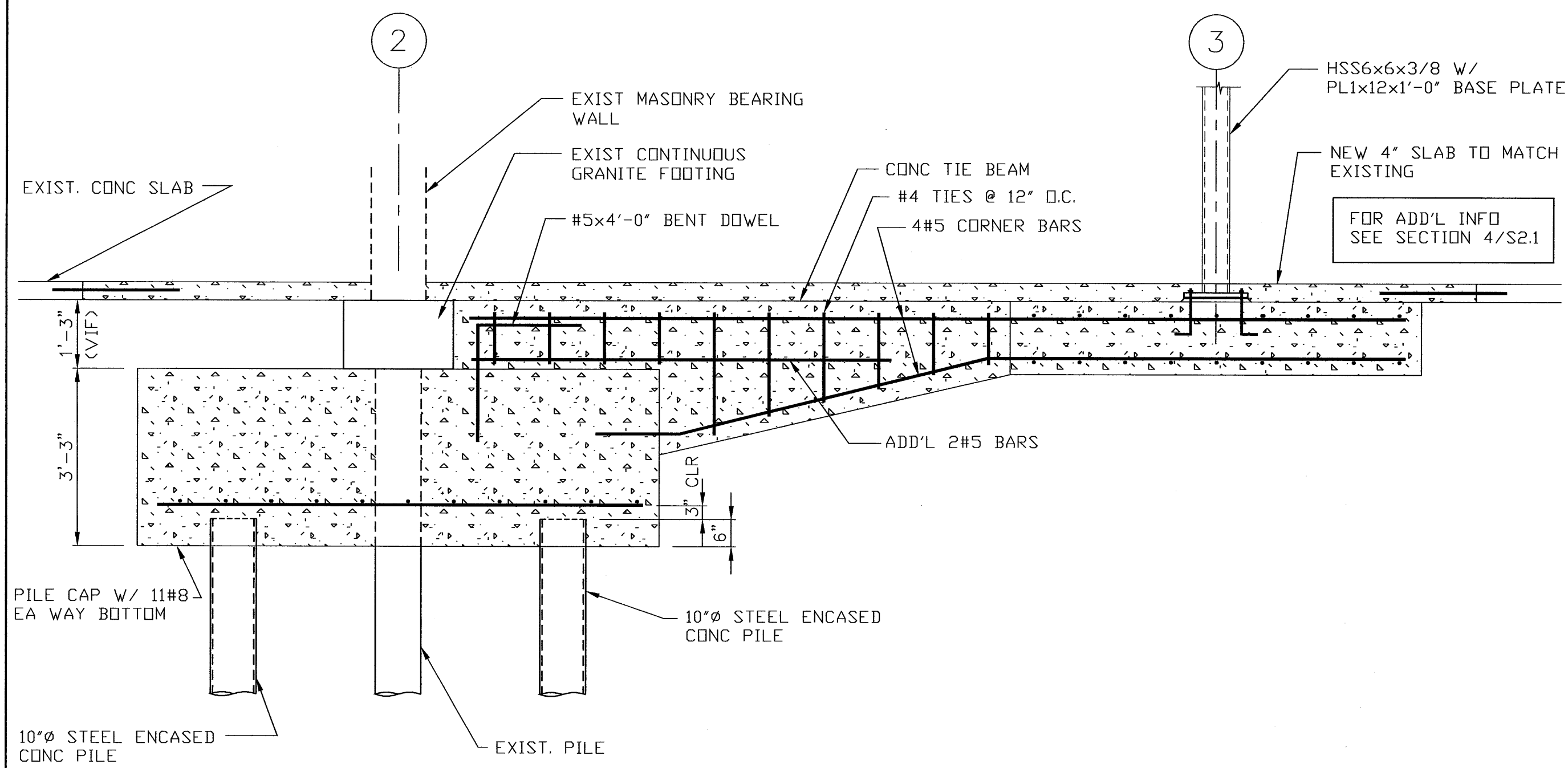


SECTION 1
1/2" = 1'-0"

SECTION 2
1/2" = 1'-0"

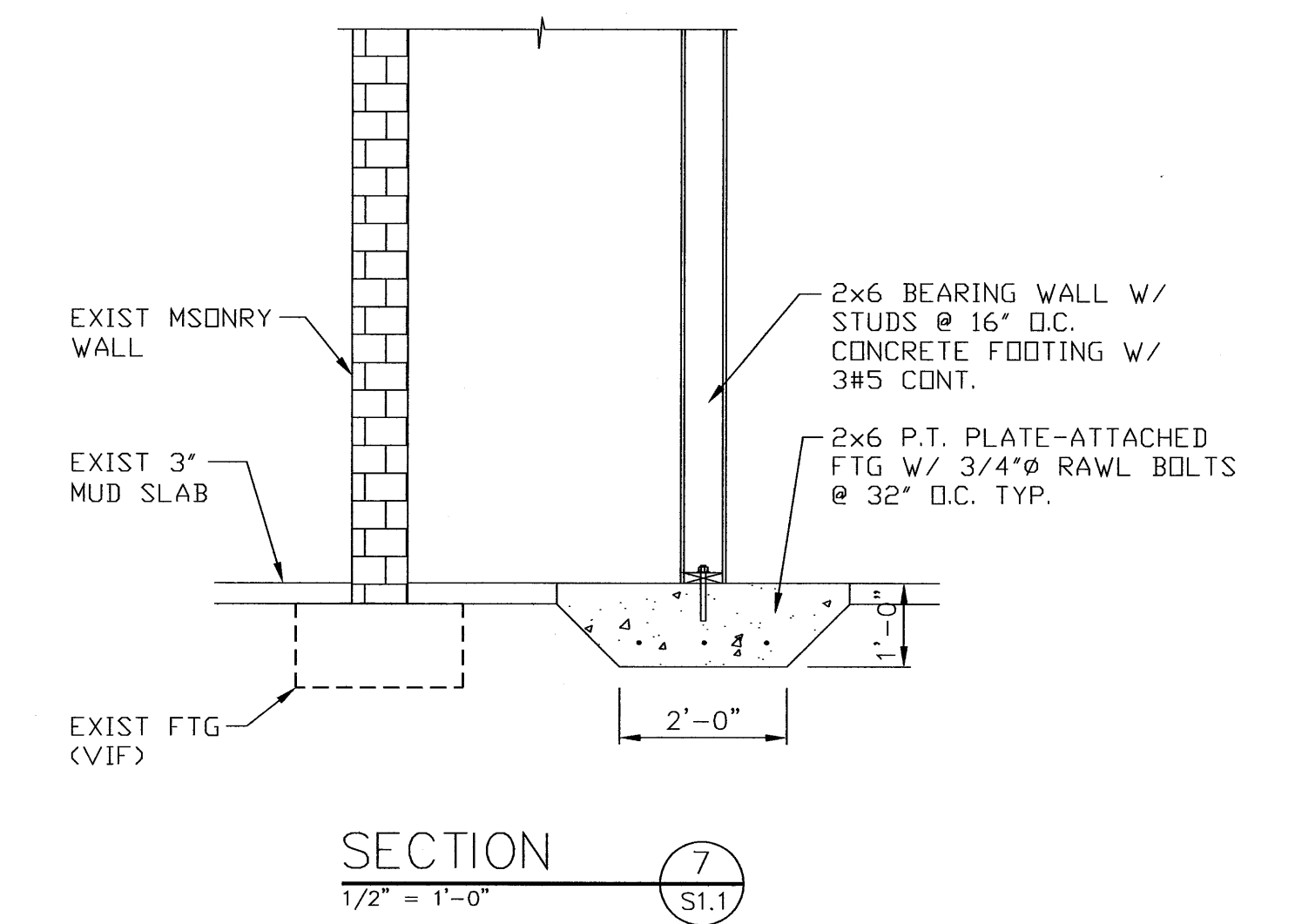
SECTION 3
1/2" = 1'-0"

NOTES: 1. AT SHEAR WALLS BLOCK ALL PANEL EDGES SOLID W/ 2x6 BLOCKING. ATTACH ALL PANELS TO SUPPORTS USING 8d NAILS AT 4" O.C. AT PANEL EDGES & 8" O.C. AT INTERMEDIATE SUPPORTS



SECTION 6
1/2" = 1'-0"

NOTES: 1. COORDINATE SUMP PIT LOCATION W/ ARCH DWGS
2. COORDINATE HYDRAULICS BOND OUT W/ ELEVATOR MFR
3. APPLY 1/8" FIVE STAR WATERPROOFING TO INSIDE FACE OF PIT WALLS AND THE SLAB SURFACE.



SECTION 5
1/2" = 1'-0"

THESE DRAWINGS HAVE BEEN DEVELOPED BY L&L STRUCTURAL ENGINEERING SERVICES, INC. FOR THE TITLED SET ONLY. THE DRAWINGS ARE THE SOLE PROPERTY OF L&L STRUCTURAL ENGINEERING SERVICES, INC. AND THEY SHALL NOT BE USED, LENT, COPIED OR ALTERED WITHOUT THE WRITTEN CONSENT OF L&L STRUCTURAL ENGINEERING SERVICES, INC.



490 Congress Street Portland, Maine Kimball Building, LLC Portland, Maine	FOR PERMIT ONLY NOT FOR CONSTRUCTION
James Sterling AIA Architect 142 High Street Portland, Maine	
CONCRETE DETAILS	S-2.1
SCALE: 1/2" = 1'-0"	
DATE: MAY 26, 2005	

