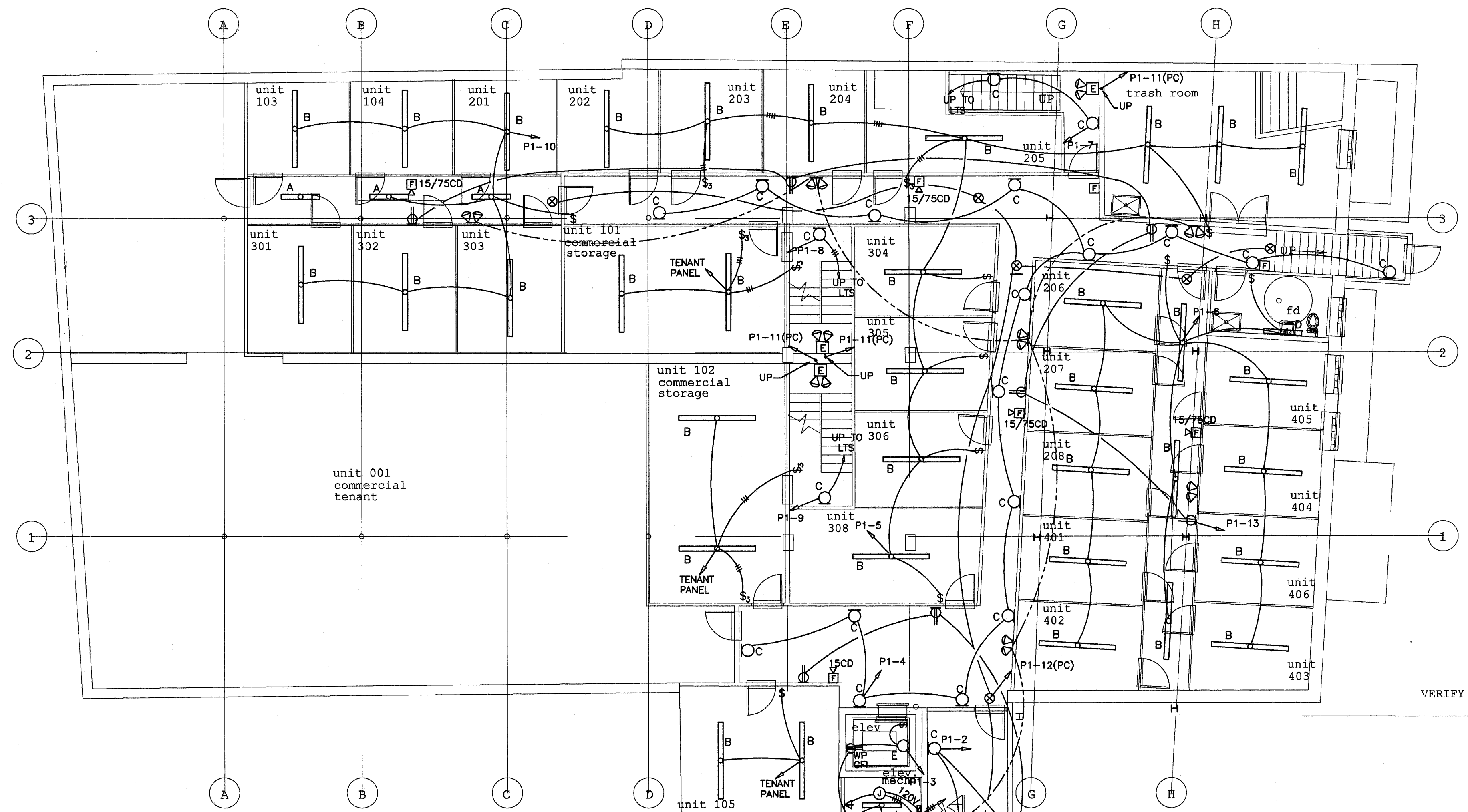


Congress Street

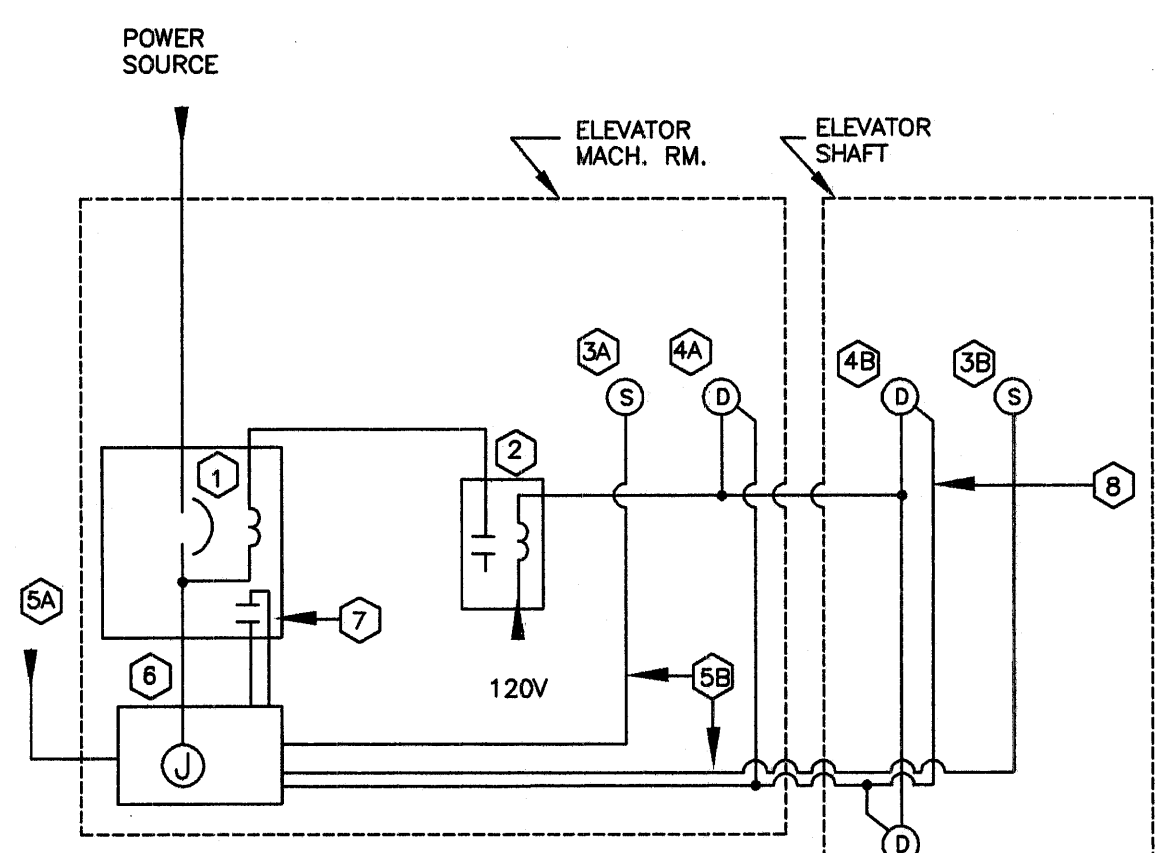
Free Street



VERIFY PROPERTY LINE

VERIFY PROPERTY LINE

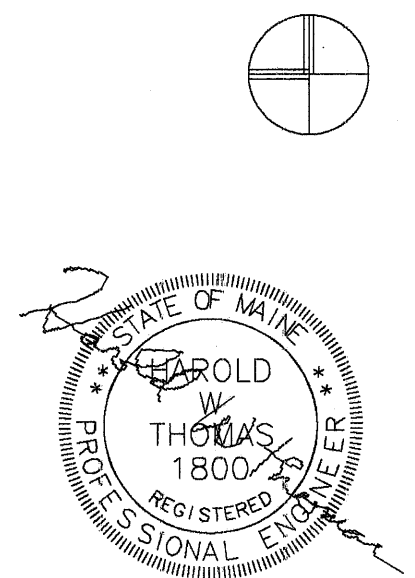
Brown Street



- 1 CIRCUIT BREAKER WITH SHUNT TRIP.
- 2 AUX. RELAY, 120V COIL, NEMA 1 ENCLOSURE.
- 3A PHOTO ELECTRIC SMOKE DETECTOR IN ELEVATOR MACHINE ROOM.
- 3B PHOTO ELECTRIC SMOKE DETECTOR AT TOP OF ELEVATOR SHAFT.
- 4A FIXED TEMP. THERMAL DETECTOR (135°) IN ELEVATOR MACHINE ROOM.
- 4B FIXED TEMP. THERMAL DETECTOR (135°) IN ELEVATOR SHAFT & PIT
- 5A SIGNAL FROM FIRE ALARM PANEL AND SMOKE DETECTORS AT EACH ELEVATOR LANDING.
- 5B WIRING FOR RECALL.
- 6 ELEVATOR CONTROLLER.
- 7 AUXILIARY CONTACT
- 8 FROM SECOND AUXILIARY CONTACT IN THERMAL DETECTOR. (TYPICAL) THIS CONTACT SHALL BE NORMALLY CLOSED.

- NOTES:
1. LOCATE SPINKLER HEADS IN ELEVATOR SHAFT AND IN MACHINE ROOM AS REQUIRED BY NFPA 13.
 2. PROVIDE BRANCH SPRINKLER SHUT-OFF VALVES WITH TAMPER SWITCHES PER ASME (ANSI) A17.1-1987, RULE 102.2.
 3. SHUNT TRIP BREAKER SHALL OPEN WHEN ANY THERMAL DETECTOR OPERATES.

ELEVATOR DEVICES & WIRING DETAILS
NOT TO SCALE



490 Congress Street
Portland, Maine

Kimball Building, LLC
Portland, Maine

James Sterling AIA
Architect
142 High Street
Portland, Maine

BASEMENT ELECTRICAL

scale: 1/8" = 1'-0"

date: 27 May 2005

E-B