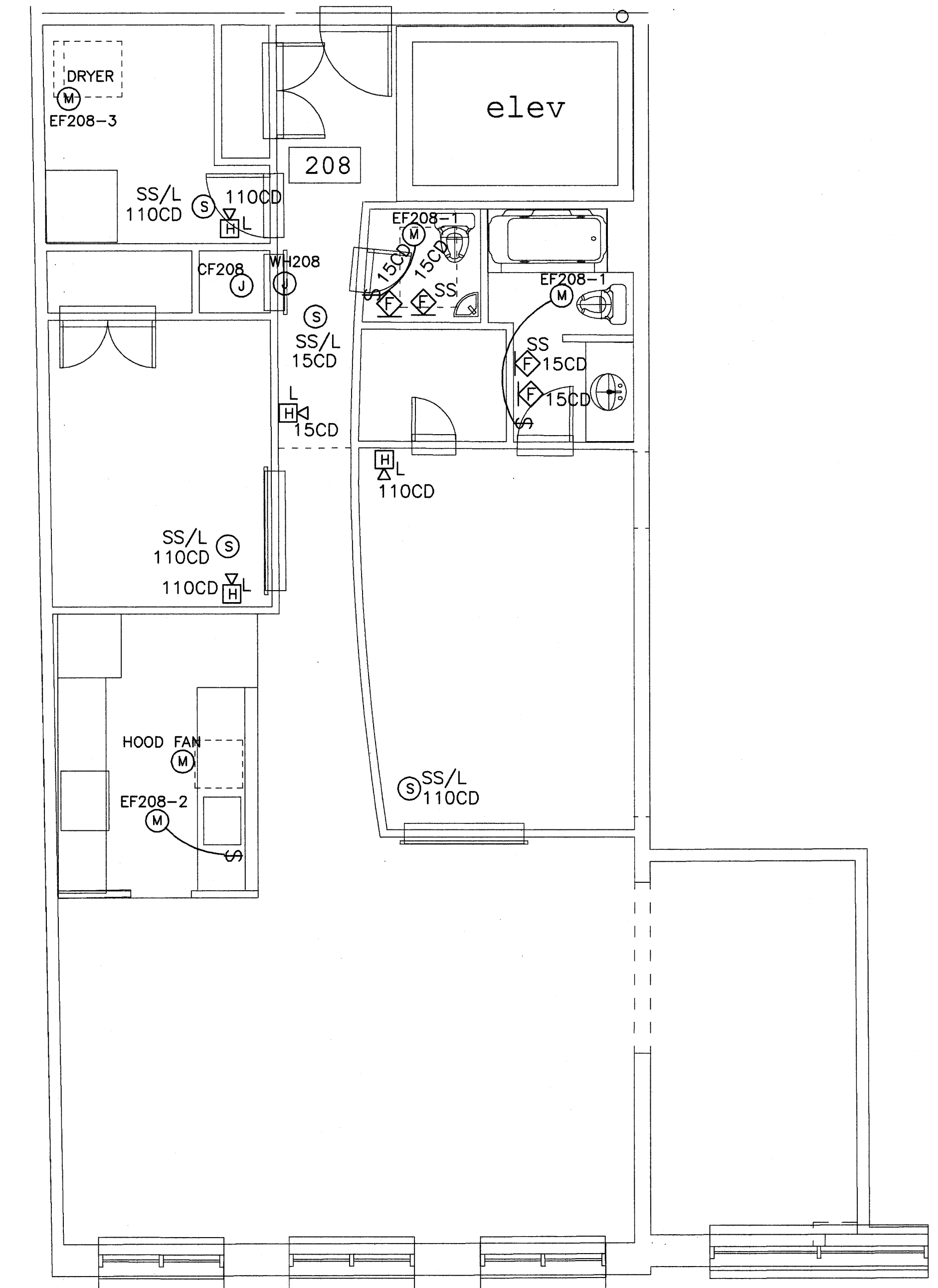


LEGEND:
 CF FURNACE
 EF EX FAN
 WH ELECT WTR HTR

NOTE:
 COORDINATE EXACT
 LOCATIONS WITH MECH
 EQUIP IN FIELD PRIOR
 TO INSTALLATION.



NOTES:

BUILDING SYSTEM FIRE ALARM

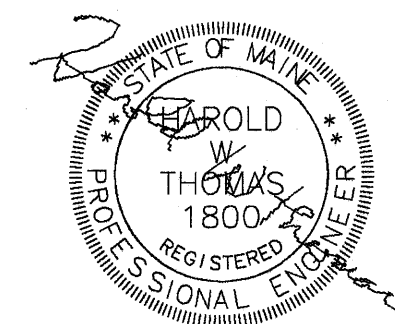
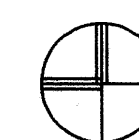
1. APARTMENT TYPE BUILDING SYSTEM HORN UNITS SHALL BE INSTALLED IN EACH APARTMENT UNIT (WHETHER SHOWN OR NOT); ONE IN EACH BEDROOM AND ONE IN THE HALLWAY OR EQUIVALENT LOCATION.
2. APARTMENT TYPE BUILDING SYSTEM HORNS IN HANDICAP UNITS SHALL HAVE STROBES. THOSE IN THE HALL OR EQUIVALENT LOCATION SHALL BE RATED AT 15cd. THOSE IN BEDROOMS SHALL BE RATED AT 110cd.

UNIT SINGLE STATION SMOKE DETECTOR SYSTEM

1. EACH APARTMENT UNIT SHALL HAVE WITHIN (WHETHER SHOWN OR NOT); A SINGLE STATION SMOKE DETECTOR IN EACH BEDROOM AND ONE IN THE HALLWAY OR EQUIVALENT LOCATION.
2. SINGLE STATION SMOKE DETECTORS IN HANDICAP UNITS SHALL HAVE STROBES. THOSE IN THE HALL OR EQUIVALENT LOCATION SHALL BE RATED AT 15cd. THOSE IN THE BEDROOMS SHALL BE RATED AT 110cd.
3. EACH HANDICAP APARTMENT UNIT SHALL, IN EACH BATHROOM, (WHETHER SHOWN OR NOT) HAVE A STROBE CONNECTED TO THE SINGLE STATION SMOKE DETECTOR SYSTEM. THESE STROBES SHALL BE RATED AT 15cd.
3. ALL SMOKE DETECTORS SHALL BE WIRED TOGETHER SO THAT WHEN ANY DETECTOR WITHIN THE UNIT IS ACTIVATED, ALL SMOKE DETECTORS SHALL BE IN ALARM, AND ALL STROBES WILL BE ACTIVATED.
4. CONNECT TO UNIT LTG CIRCUIT BREAKER.

LEGEND

- ⊠ FIRE ALARM VISUAL UNIT - BUILDING SYSTEM
- ⊠ SS FIRE ALARM VISUAL UNIT - SINGLE STATION SYSTEM
- ⊠ L FIRE ALARM HORN - APARTMENT TYPE - BUILDING SYSTEM - L MEANS STROBE TYPE
- ⊠ SS SMOKE DETECTOR - SINGLE STATION SYSTEM
- ⊠ SS/L SMOKE DETECTOR - SINGLE STATION SYSTEM WITH STROBE



490 Congress Street
 Portland, Maine
 Kimball Building, LLC
 Portland, Maine
 James Sterling AIA
 Architect
 142 High Street
 Portland, Maine

TYPICAL UNITS-MECHANICAL,
 SMOKE DETECTOR AND F.A.
 scale: 1/4" = 1'-0"
 date: 27 May 2005

E-7