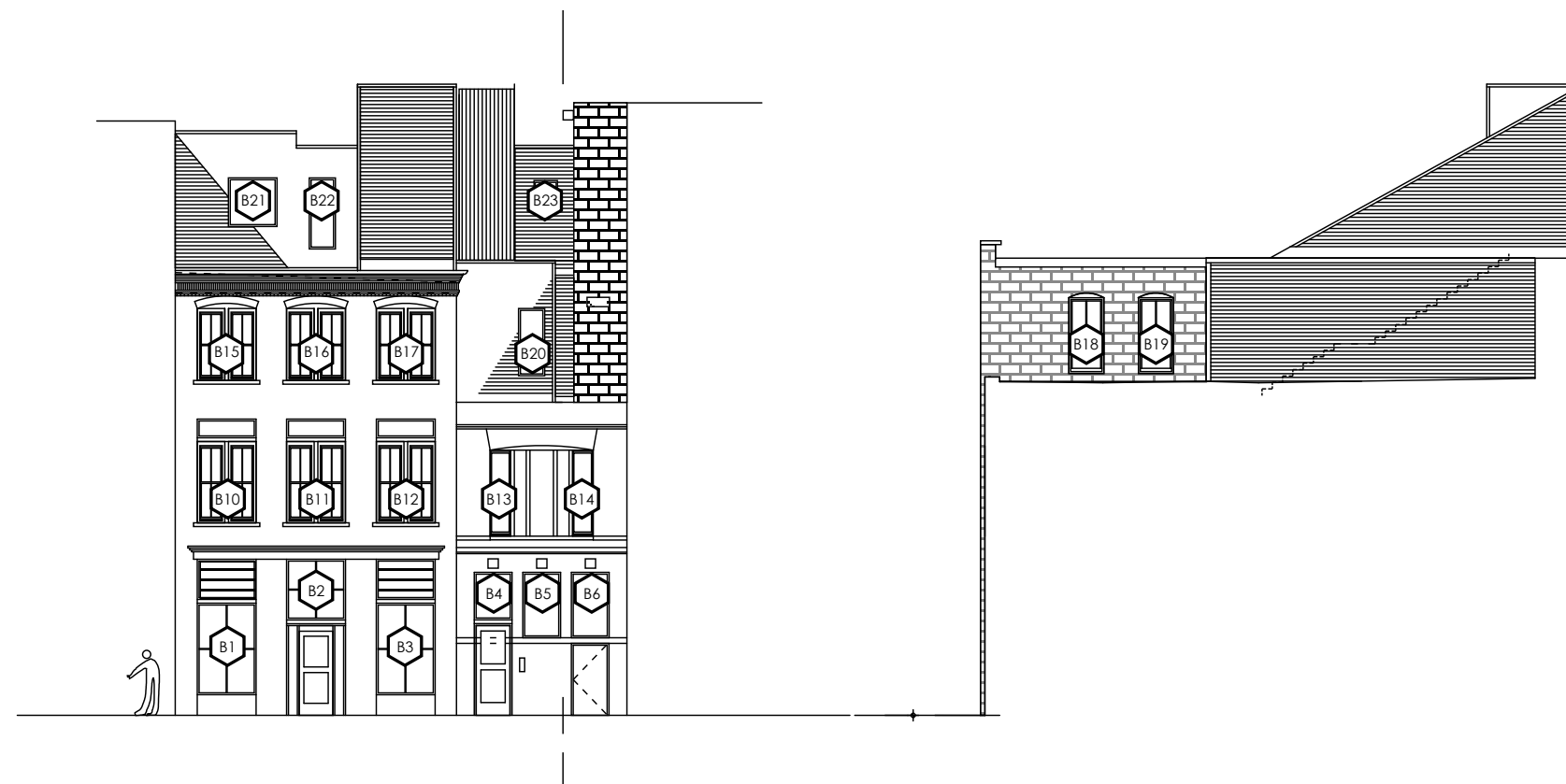
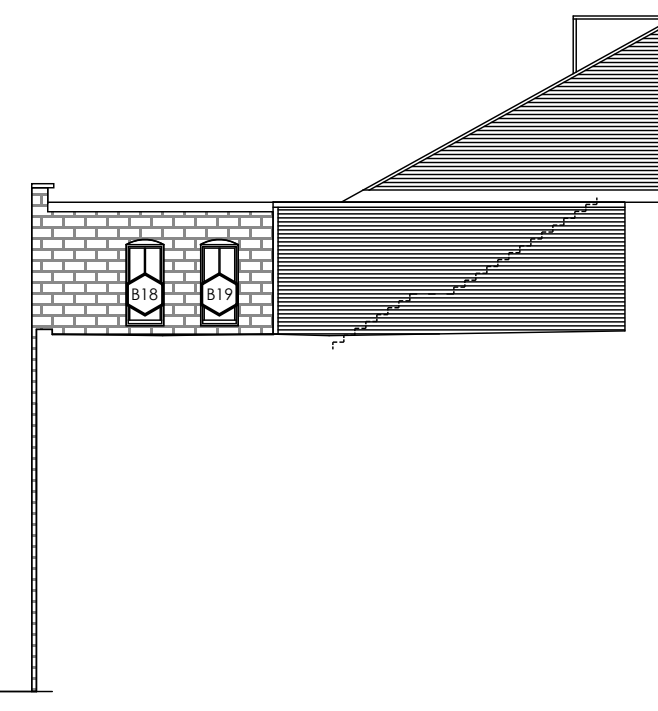


CONGRESS STREET



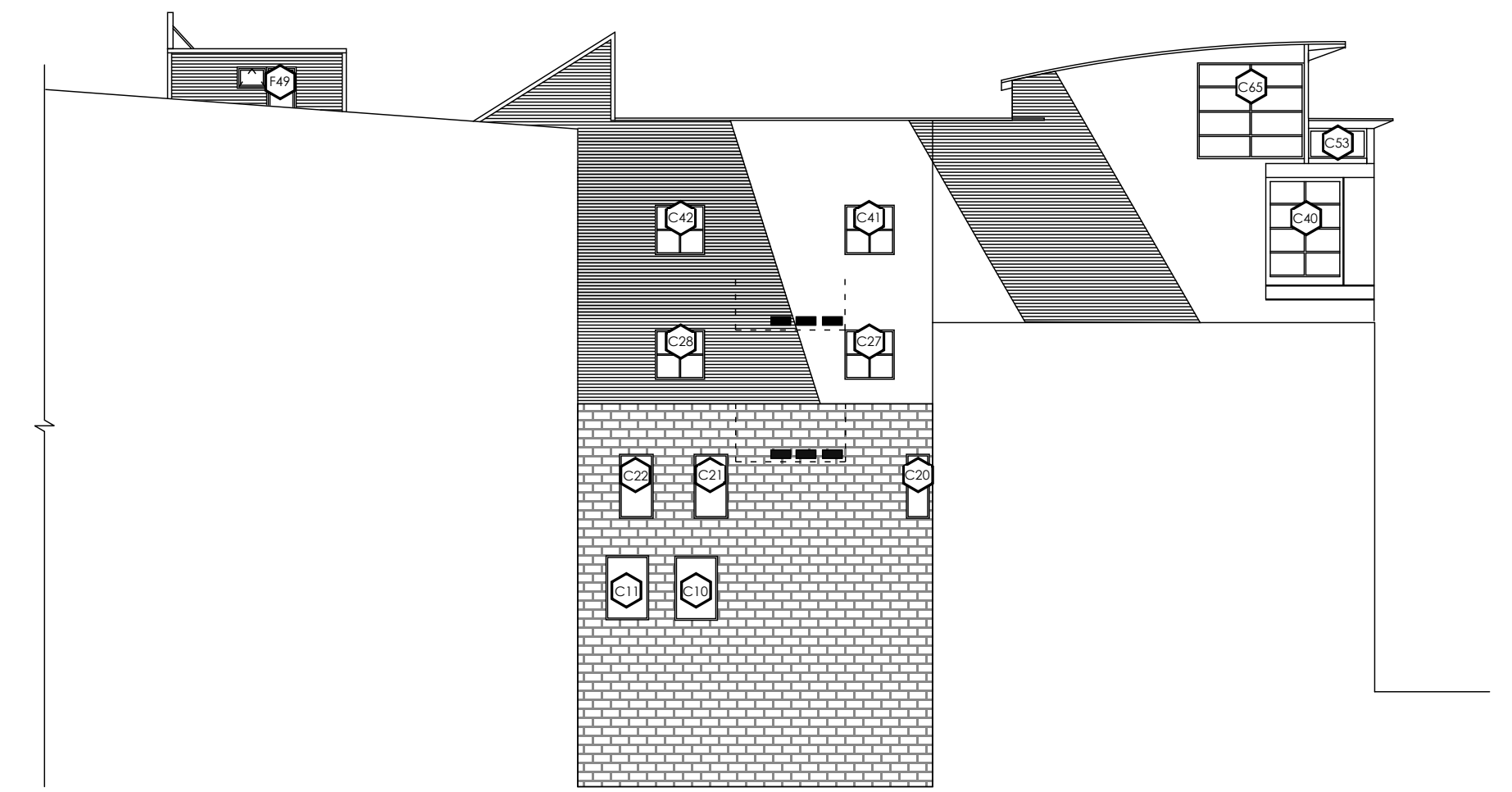
BROWN STREET



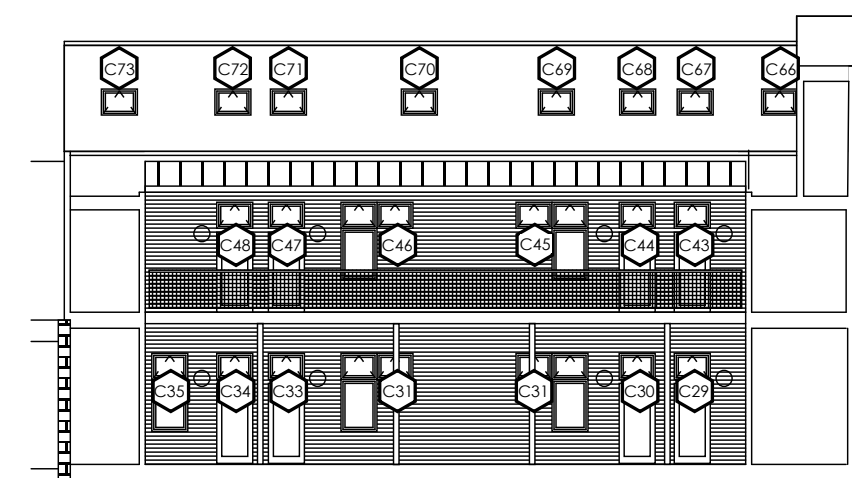
BROWN STREET SOUTH ELEVATION



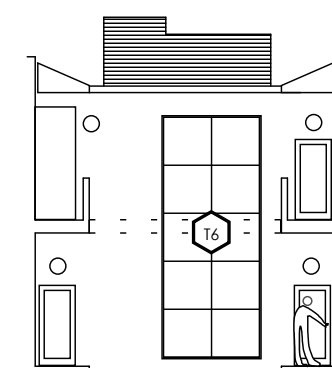
FREE STREET



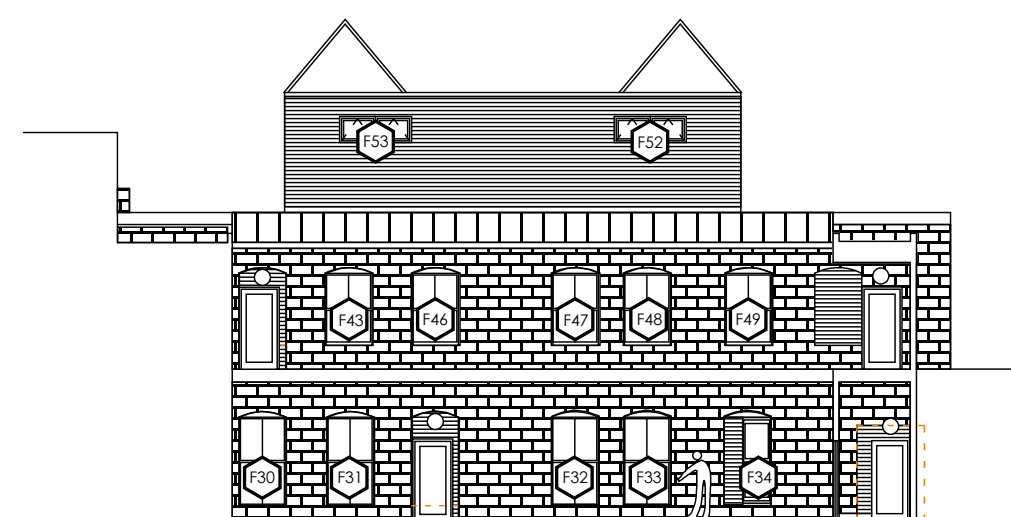
AIRSHAFT (EAST ELEVATION)



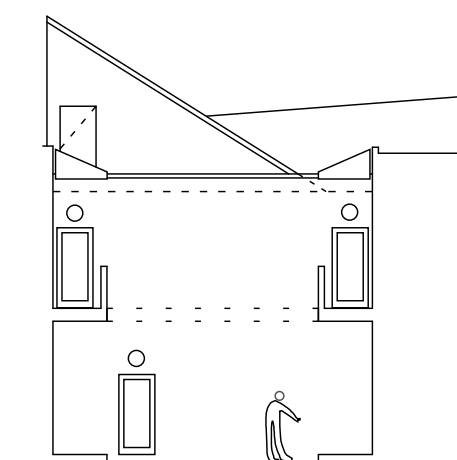
COURTYARD SOUTH ELEVATION



COURTYARD WEST ELEVATION



COURTYARD NORTH ELEVATION



COURTYARD EAST ELEVATION

490 Congress Street
Portland, Maine

Kimball Block, LLC
Portland, Maine

James Sterling AIA
Architect
142 High Street
Portland, Maine

WINDOW SCHEDULES

scale: 1/16" = 1' 0"

date: 20 May 2005

A-7.6.1