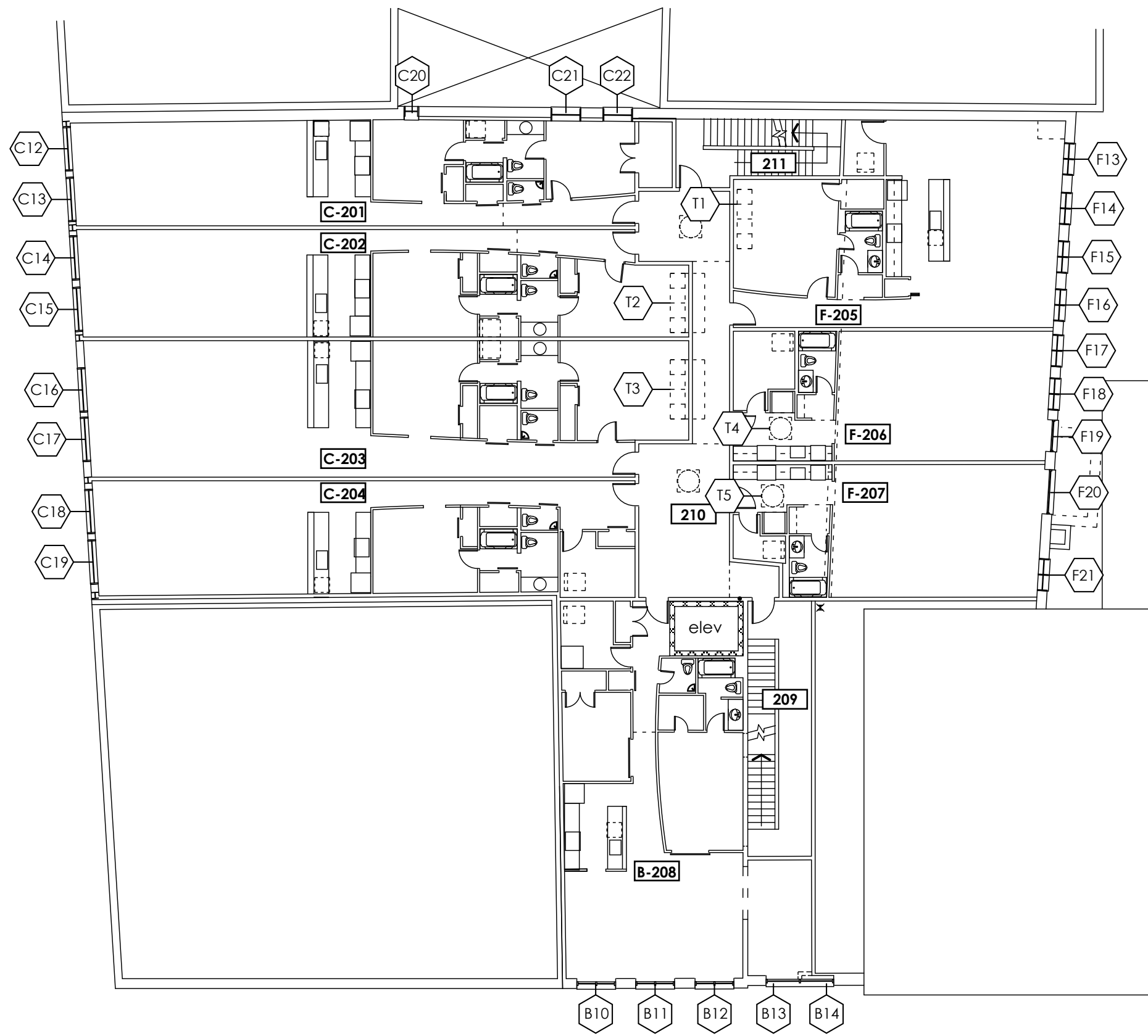


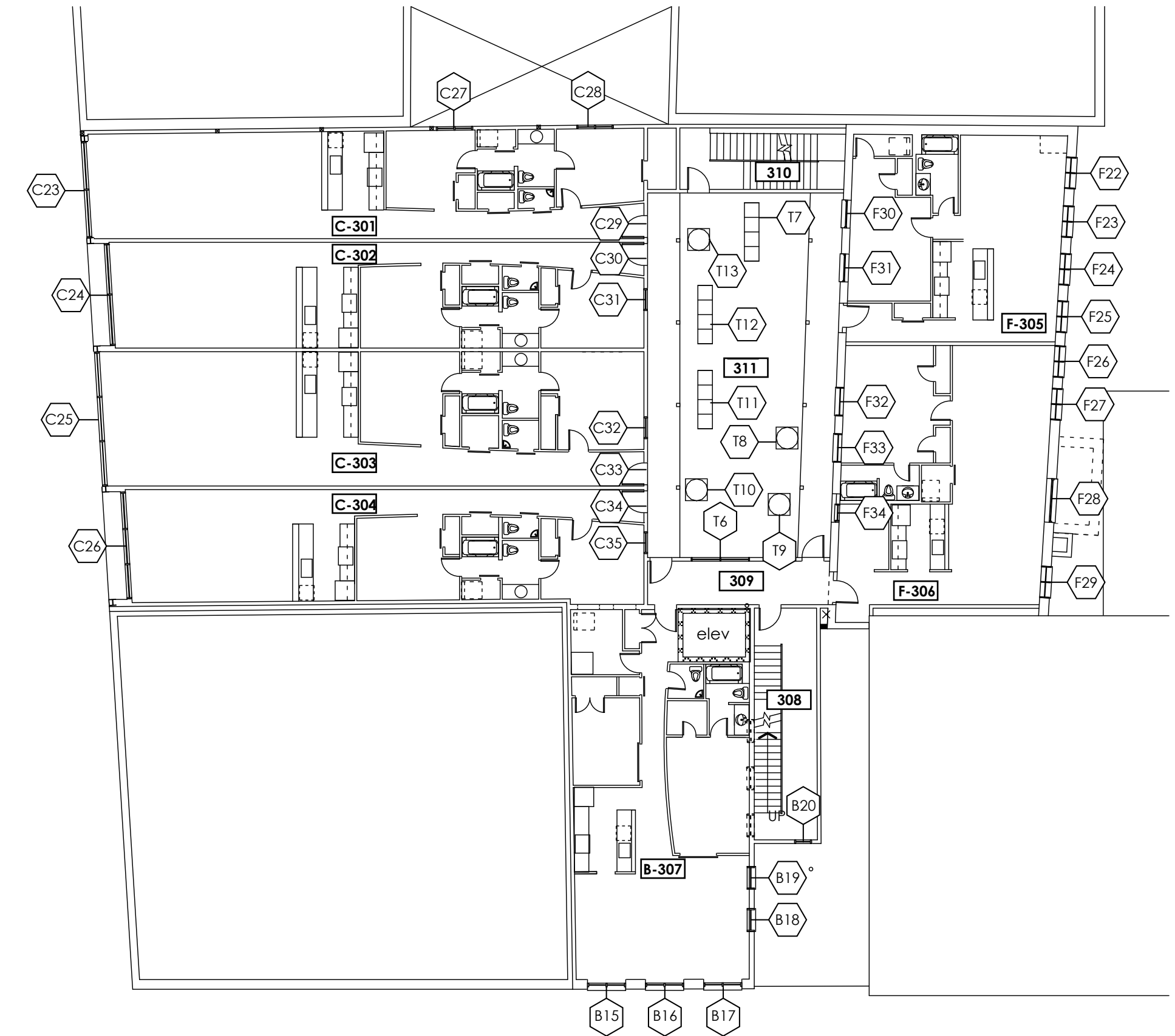
WINDOW SCHEDULE

window number	type	unit size	remarks
<b>SECOND LEVEL</b>			
F13-F18	I	*4' 0" x 7' 4"	existing opening/ field measured
F19	K	*4' 0" x 7' 4"	field measured
F20	K	*6' 0" x 7' 4"	field measured
F21	I	*4' 0" x 6' 0"	existing opening/ field measured
C12-C19	M	*6' 3" x 9' 0"	field measured
C20	H	*2' 4" x 6' 6"	field measured
C21-C22	H	*3' 5" x 6' 6"	field measured
B10-B12	N	*5' 3" x 9' 3"	existing opening/ field measured
B13 - B14	O	*1' 10" x 7' 8"	existing opening/ field measured
T1 - T3	AI	1' 4" x varies	
T4 - T5	AJ	3' 0" x 3' 0"	
<b>THIRD LEVEL</b>			
F22-F27	I	*4' 0" x 7' 4"	existing opening/ field measured
F28	K	*6' 0" x 7' 4"	field measured
F29	I	*4' 0" x 6' 0"	field measured
F30-F33	I	*4' 0" x 7' 4"	existing opening/ field measured
F34	O	*2' 4" x 7' 4"	field measured
C23	Q	*13' 10" x 9' 11"	field measured
C24	Q	*14' 4" x 9' 11"	field measured
C25	R	*17' 10" x 9' 11"	field measured
C26	R	*15' 2" x 9' 11"	field measured
C27-C28	K	5' 0" x 5' 0"	
C29-C30	P	3' 0" x 2' 0"	
C31-C32	S	6' 0" x 6' 6"	
C33-C34	P	3' 0" x 2' 0"	
C35	T	3' 0" x 6' 6"	
B15-B17	V	*5' 3" x 6' 5"	existing opening/ field measured
B18-B19	U	*3' 2" x 6' 9"	existing opening/ field measured
B20	H	2' 4" x 6' 0"	
T6	Y	8' 3" x 20' 3"	
T7	AA	2' 0" x 8' 0"	sand blasted, rooflight
T8-T10	Z	3' 0" diam	sand blasted, rooflight
T11-T12	AA	2' 0" x 8' 0"	sand blasted, rooflight
T13	Z	3' 0" diam	sand blasted, rooflight
<b>FOURTH LEVEL</b>			
F35-F42	I	*4' 0" x 6' 0"	existing opening/ field measured
F43-F47	I	*4' 0" x 6' 0"	existing opening/ field measured
C36	Q	*13' 10" x 9' 3"	field measured
C37	Q	*14' 4" x 9' 3"	field measured
C38	R	*17' 10" x 9' 3"	field measured
C39	R	*15' 2" x 9' 3"	field measured
C40	X	*7' 0" x 9' 3"	field measured
C41-C42	K	5' 0" x 5' 0"	
C43-C44	P	3' 0" x 2' 0"	
C45-C46	S	6' 0" x 6' 6"	
C47-C48	P	3' 0" x 2' 0"	
B21	H	4' 4" x 4' 4"	
B22	H	2' 4" x 6' 4"	
B23	H	2' 0" x 2' 4"	

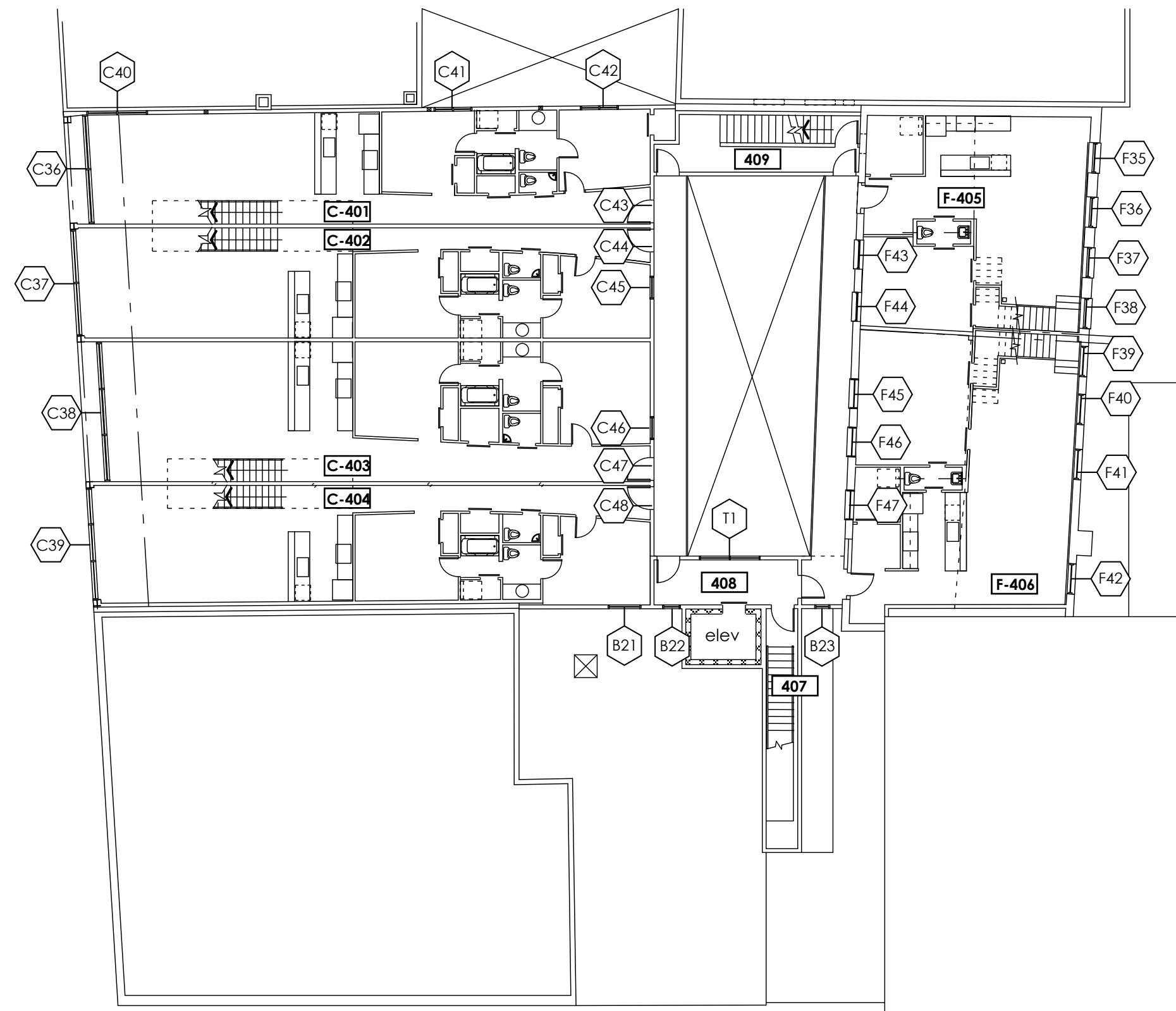
window number	type	unit size	remarks
<b>MEZZ LEVEL</b>			
F48	S	6' 0" x 6' 6"	
F49-F50	AB	9' 10" x 8' 4"	
F51	S	6' 0" x 6' 6"	
F52-F53	W	6' 0" x 2' 0"	
C49	AC	*13' 10" x 2' 5"	field measured
C50	AC	*14' 4" x 2' 5"	field measured
C51	AD	*17' 10" x 2' 5"	field measured
C52	AD	*15' 2" x 2' 5"	field measured
C53-C56	AH	*6' 0" x 2' 5"	field measured
C57	AE	*10' 10" x 9' 2"	field measured
C58	AG	*3' 0" x 3' 0"	field measured
C59	AE	*11' 2" x 9' 2"	field measured
C60	AG	*3' 0" x 3' 0"	field measured
C61	AF	*14' 10" x 9' 2"	field measured
C62-C63	AG	*3' 0" x 3' 0"	field measured
C64	AF	*13' 2" x 9' 2"	field measured
C65	X	*10' 10" x 9' 2"	field measured
C66-C73	P	3' 0" x 2' 0"	
C74	S	6' 0" x 6' 6"	



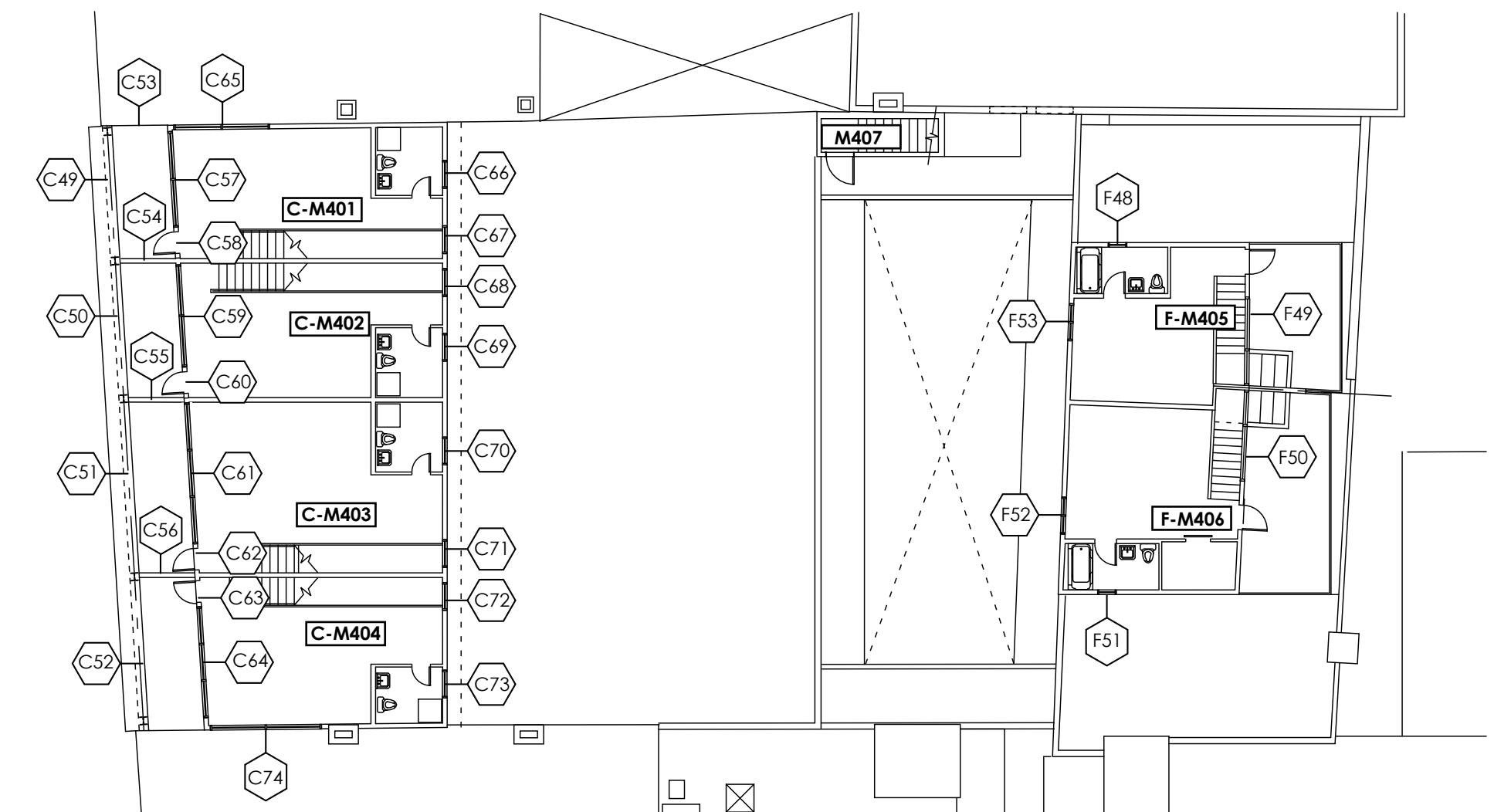
2 second level



3 third level



4 fourth level



5 mezzanine level

490 Congress Street  
Portland, Maine  
Kimball Block, LLC  
Portland, Maine  
James Sterling AIA  
Architect  
142 High Street  
Portland, Maine

WINDOW SCHEDULES  
scale: 1/16" = 1' 0"  
date: 20 May 2005

A-7.6