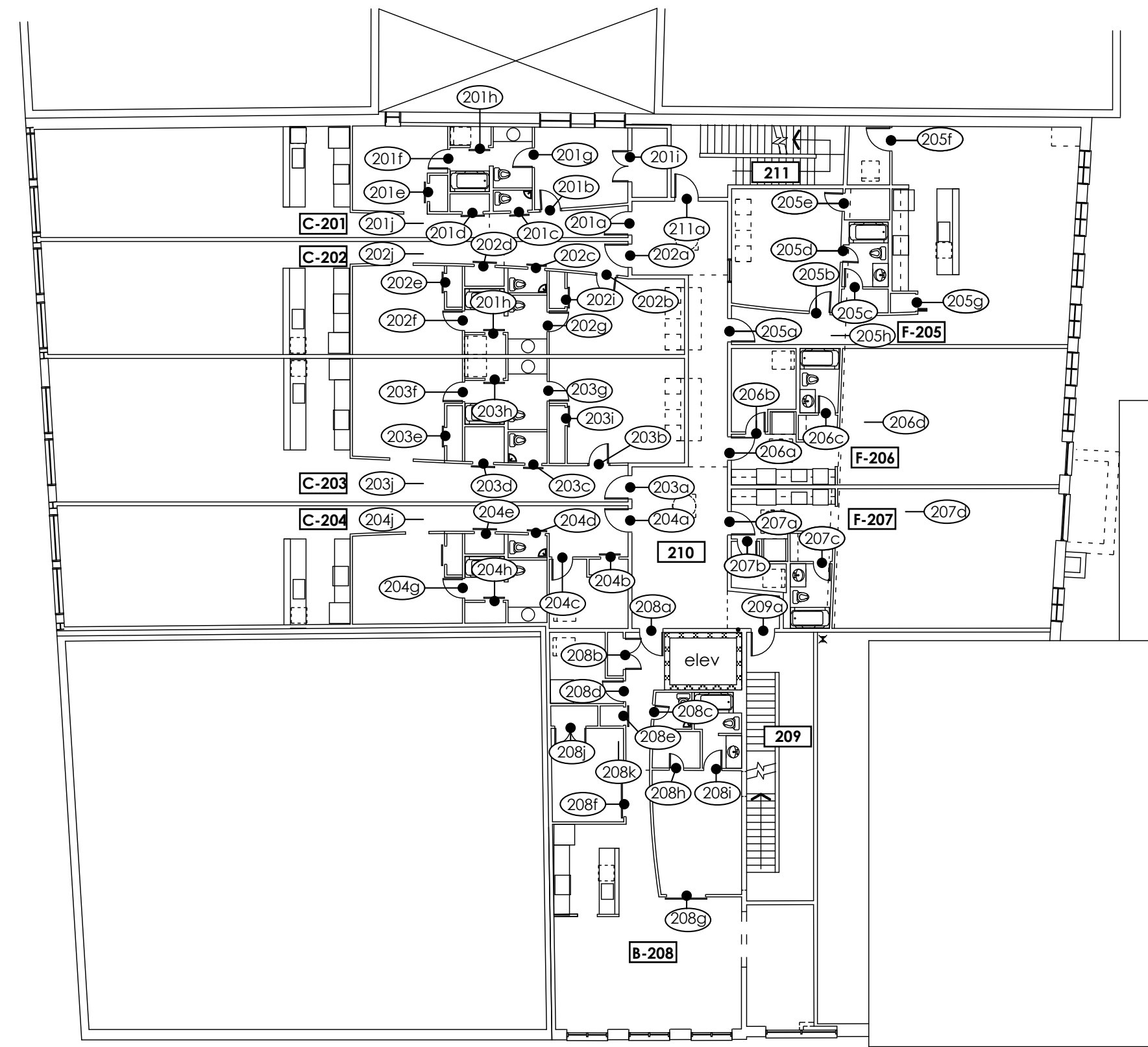


DOOR SCHEDULE

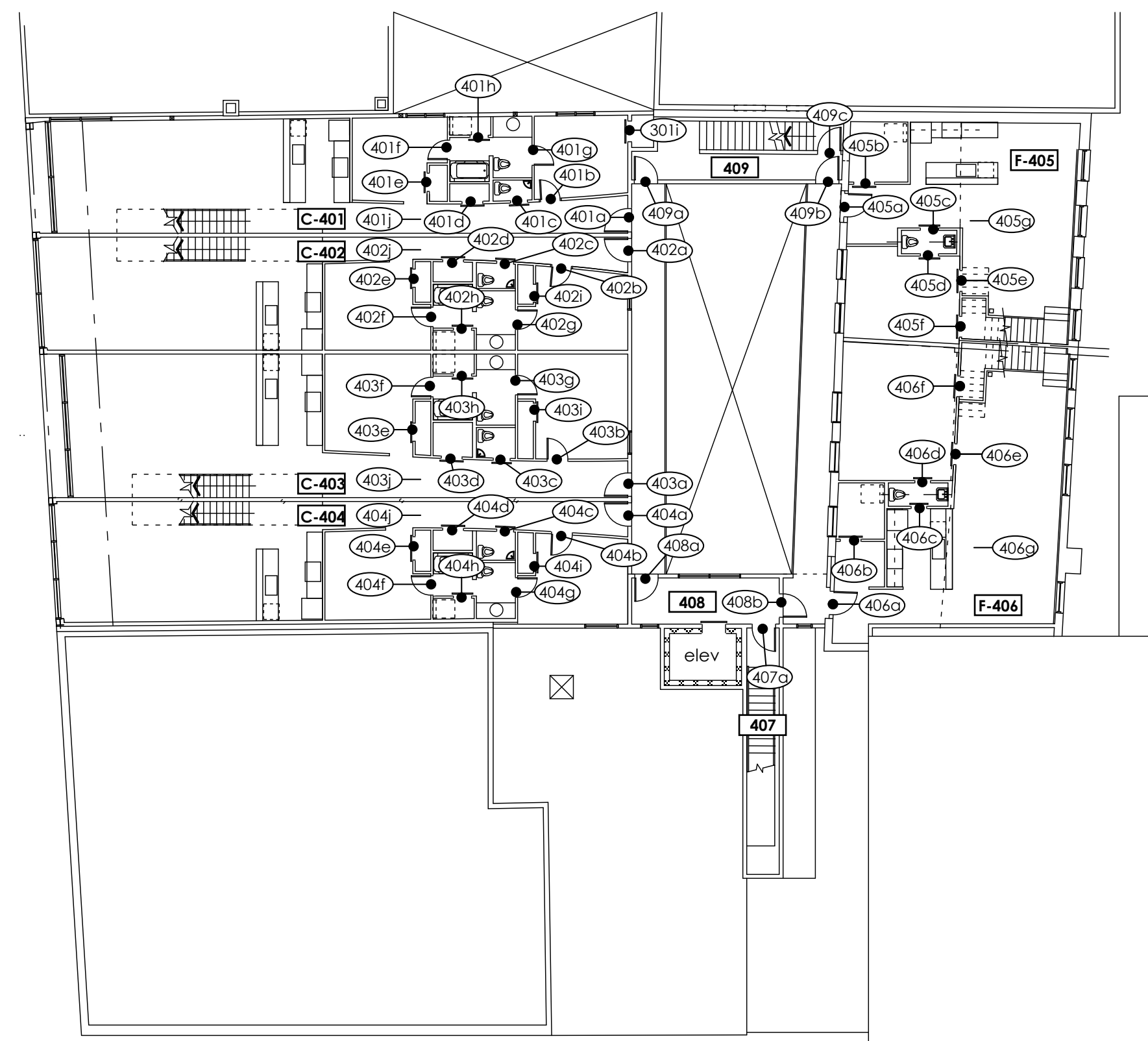
door number	type	unit size	room name/remarks
CONGRESS STREET UNITS			
201/ 202/ 203			
a	D	3'0"x6'8"	entry
b	A	3'0"x6'8"	bedroom
c	B	2'8"x6'8"	half bath slider
d	B	2'8"x6'8"	closet slider
201e	B	2'0"x6'8"	closet slider
202e	B	2'4"x6'8"	closet slider
203e	B	2'6"x6'8"	closet slider
f/ g	A	3'0"x6'8"	bathroom
h	B	2'8"x6'8"	laundry slider
2011/ 203i	C	[2]2'8"x6'8"	closet (double)
202i	B	2'4"x6'8"	closet slider
j	K	3'0"x3'0"	mechanical access panel
204			
a	D	3'0"x6'8"	entry
b	B	2'8"x6'8"	closet slider
c	A	2'8"x6'8"	utility room
d	B	2'8"x6'8"	half bath slider
e	B	2'8"x6'8"	closet slider
f	B	2'6"x6'8"	closet slider
g	A	3'0"x6'8"	bathroom
h	B	2'8"x6'8"	laundry slider
j	K	3'0"x3'0"	mechanical access panel
301/ 302/ 303/ 304/ 401/ 402/ 403/ 404			
a	I	3'0"x6'8"	entry
b	A	3'0"x6'8"	bedroom
c	B	2'8"x6'8"	half bath slider
d	B	2'8"x6'8"	closet slider
301e/ 401e	B	2'0"x6'8"	closet slider
302e/ 402e	B	2'4"x6'8"	closet slider
303-304e/ 403-404e	B	2'6"x6'8"	closet slider
f/ g	A	3'0"x6'8"	bathroom
h	B	2'8"x6'8"	laundry slider
3011/ 302i/ 304i 4011/402i/404i	B	2'8"x6'8"	closet slider
303i/ 403i	B	[2]2'8"x6'8"	closet (double)
j	K	3'0"x3'0"	mechanical access panel
BROWN STREET UNITS			
208/ 307			
a	D	3'0"x6'8"	entry
b	C	[2]2'6"x6'8"	closet (double)
c	A	2'8"x6'8"	half bath
d	A	2'8"x6'8"	utility room
e	B	2'0"x6'8"	closet slider
f/ g	B	3'0"x6'8"	bedroom slider
h	A	2'8"x6'8"	closet
i	A	3'0"x6'8"	bathroom
j	C	[2]2'6"x6'8"	closet (double)
k	K	3'0"x3'0"	mechanical access panel
FREE STREET UNITS			
205			
a	D	3'0"x6'8"	entry
b	A	3'0"x6'8"	bedroom
c/ d	A	3'0"x6'8"	bathroom
e	A	2'8"x6'8"	closet
f	A	2'8"x6'8"	laundry
g	B	2'4"x6'8"	closet
h	K	3'0"x3'0"	mechanical access panel
206/ 207			
a	D	3'0"x6'8"	entry
b	A	2'8"x6'8"	laundry
c	A	3'0"x6'8"	bathroom
d	K	3'0"x3'0"	mechanical access panel

door number	type	unit size	room name/remarks
FREE STREET UNITS cont			
305			
a	I	3'0"x6'8"	entry
b	B	2'8"x6'8"	closet slider
c	A	3'0"x6'8"	bedroom
d	A	3'0"x6'8"	bathroom
e	A	2'8"x6'8"	closet
f	A	2'8"x6'8"	laundry
g	K	3'0"x3'0"	mechanical access panel
306			
a	D	3'0"x6'8"	entry
b	A	3'0"x6'8"	bedroom
c	B	2'8"x6'8"	laundry slider
d	A	3'0"x6'8"	bathroom
e/f	A	2'8"x6'8"	closet
g	K	3'0"x3'0"	mechanical access panel
405/ 406			
a	I	3'0"x6'8"	entry
b	B	2'8"x6'8"	laundry slider
c/ d	B	3'0"x6'8"	half bath slider
e	B	3'0"x6'8"	bedroom slider
f	B	2'8"x6'8"	closet slider
g	K	3'0"x3'0"	mechanical access panel
MEZZANINE UNITS			
M401-M406			
a	H	3'0"x6'8"	deck
b	A	3'0"x6'8"	bathroom
M406c	B	2'8"x6'8"	closet slider
COMMUNAL			
209a	D	3'0"x6'8"	stairwell entry
211a	D	3'0"x6'8"	stairwell entry
308a	D	3'0"x6'8"	stairwell entry
309a/309b	F	3'0"x6'8"	elevator lobby/ courtyard
310a	I	3'0"x6'8"	stairwell/ courtyard
407a	D	3'0"x6'8"	stairwell entry
408a/408b	F	3'0"x6'8"	elevator lobby/ walkway
409a/409b	I	3'0"x6'8"	stairwell/ walkway
409c	I	3'0"x6'8"	stairwell entry
M407a	I	3'0"x6'8"	roof/stair access

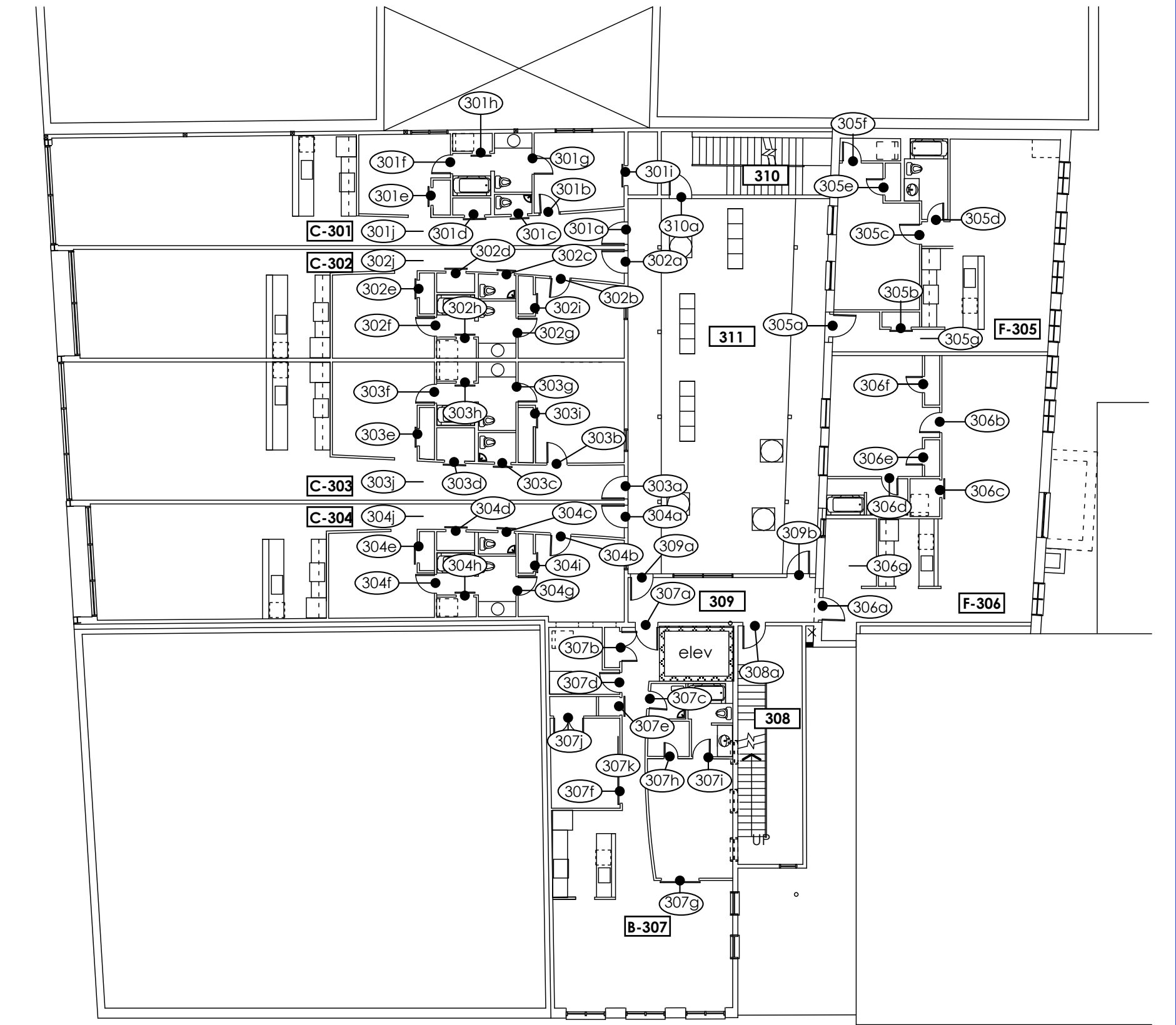
see plans for door swing/ lockset orientation
see spec for hardware schedule



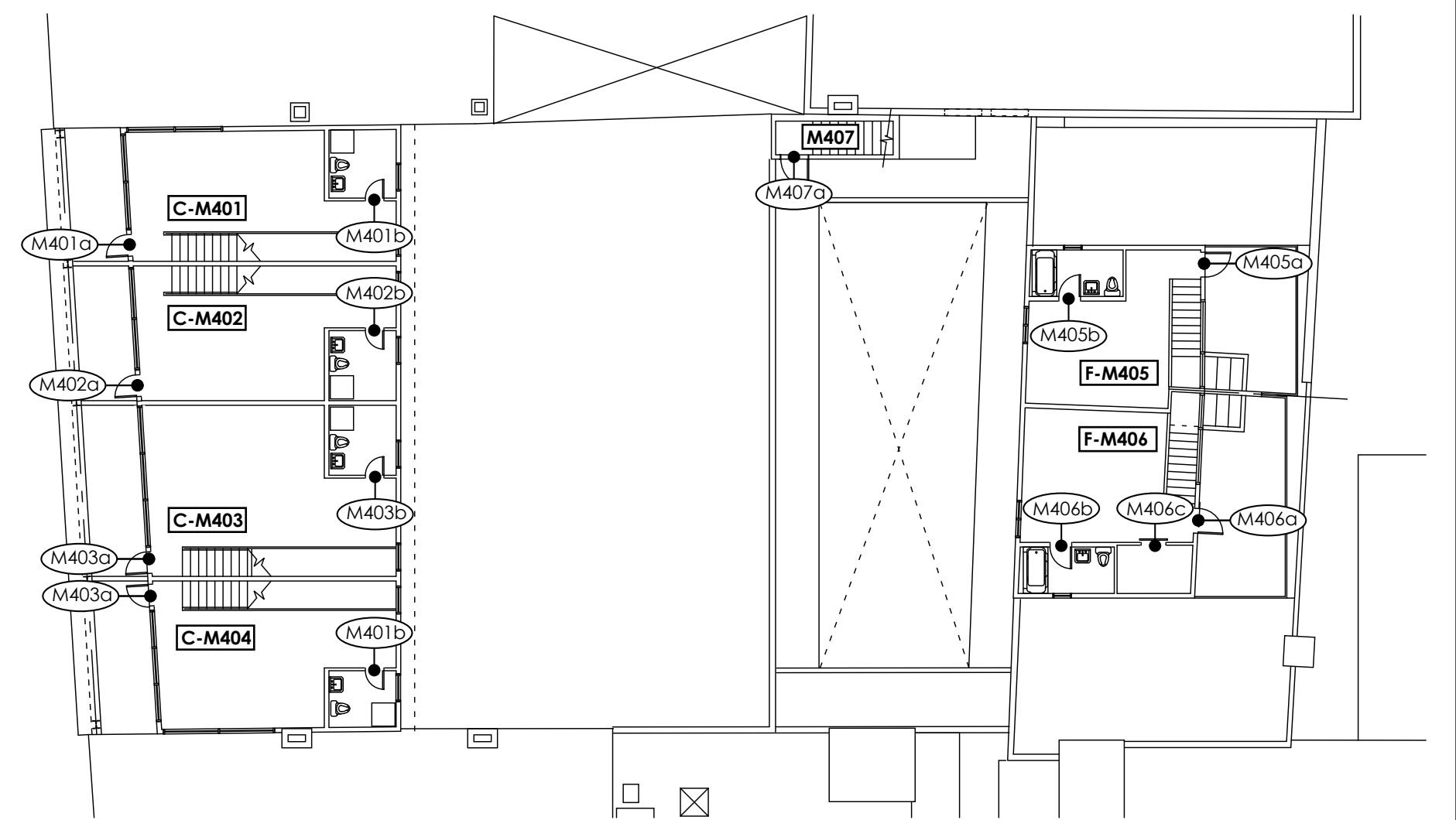
1 second level



2 fourth level



3 third level



5 mezzanine level

490 Congress Street
Portland, Maine

Kimball Block, LLC
Portland, Maine

James Sterling AIA
Architect
142 High Street
Portland, Maine

DOOR SCHEDULES

scale: 1/16" = 1' 0"

date: 20 May 2005

A-7.4