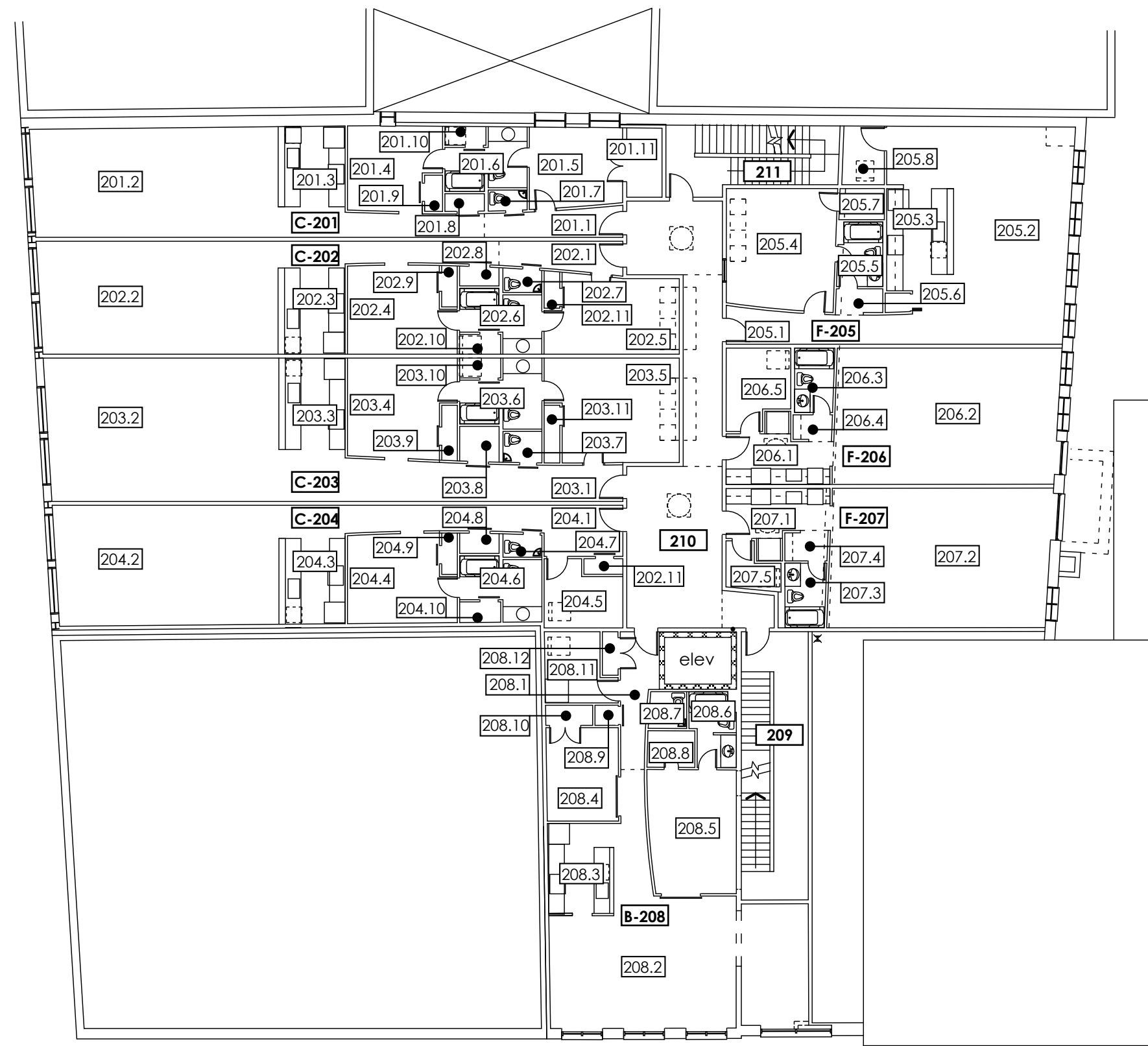
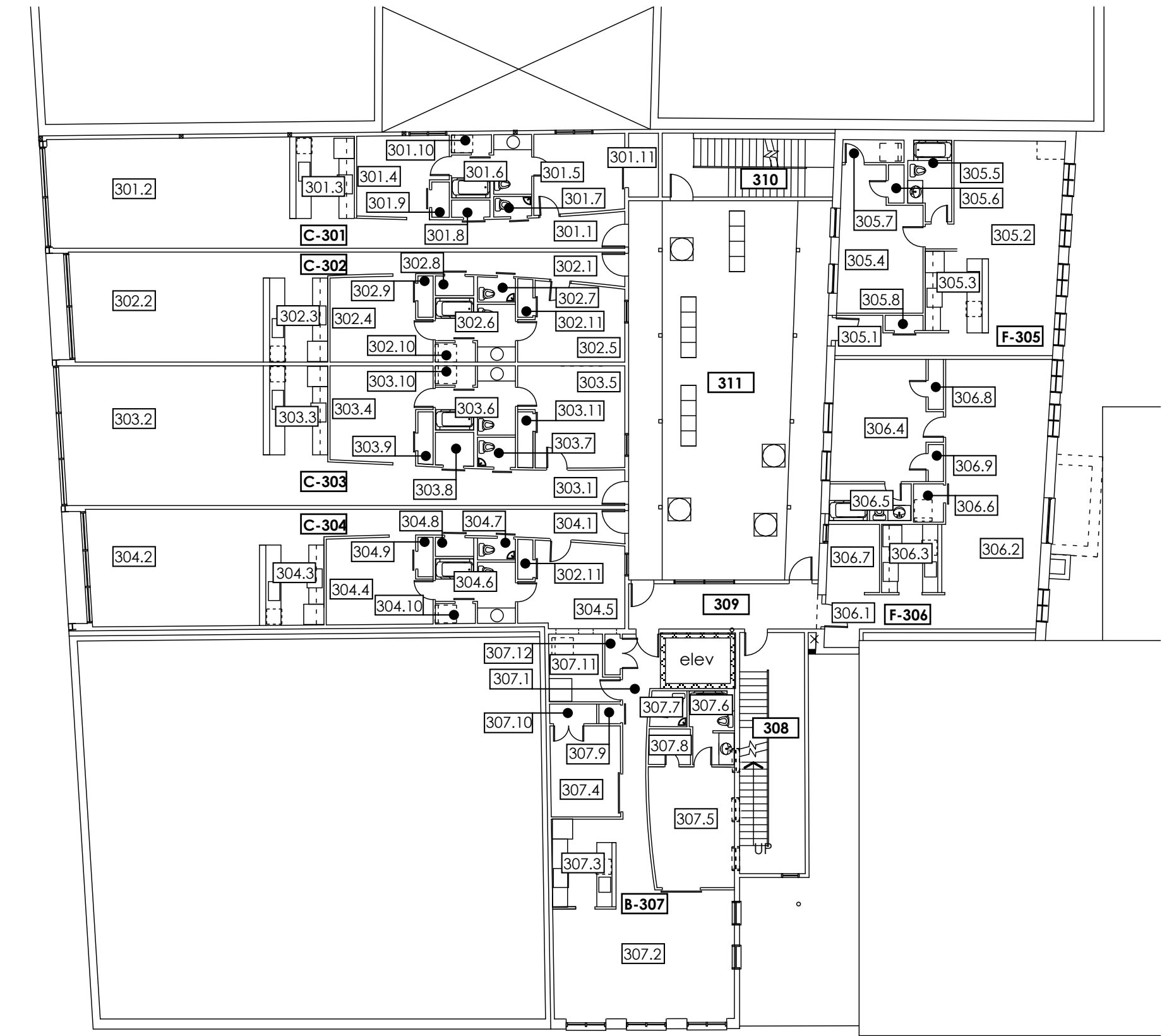


FINISH SCHEDULE

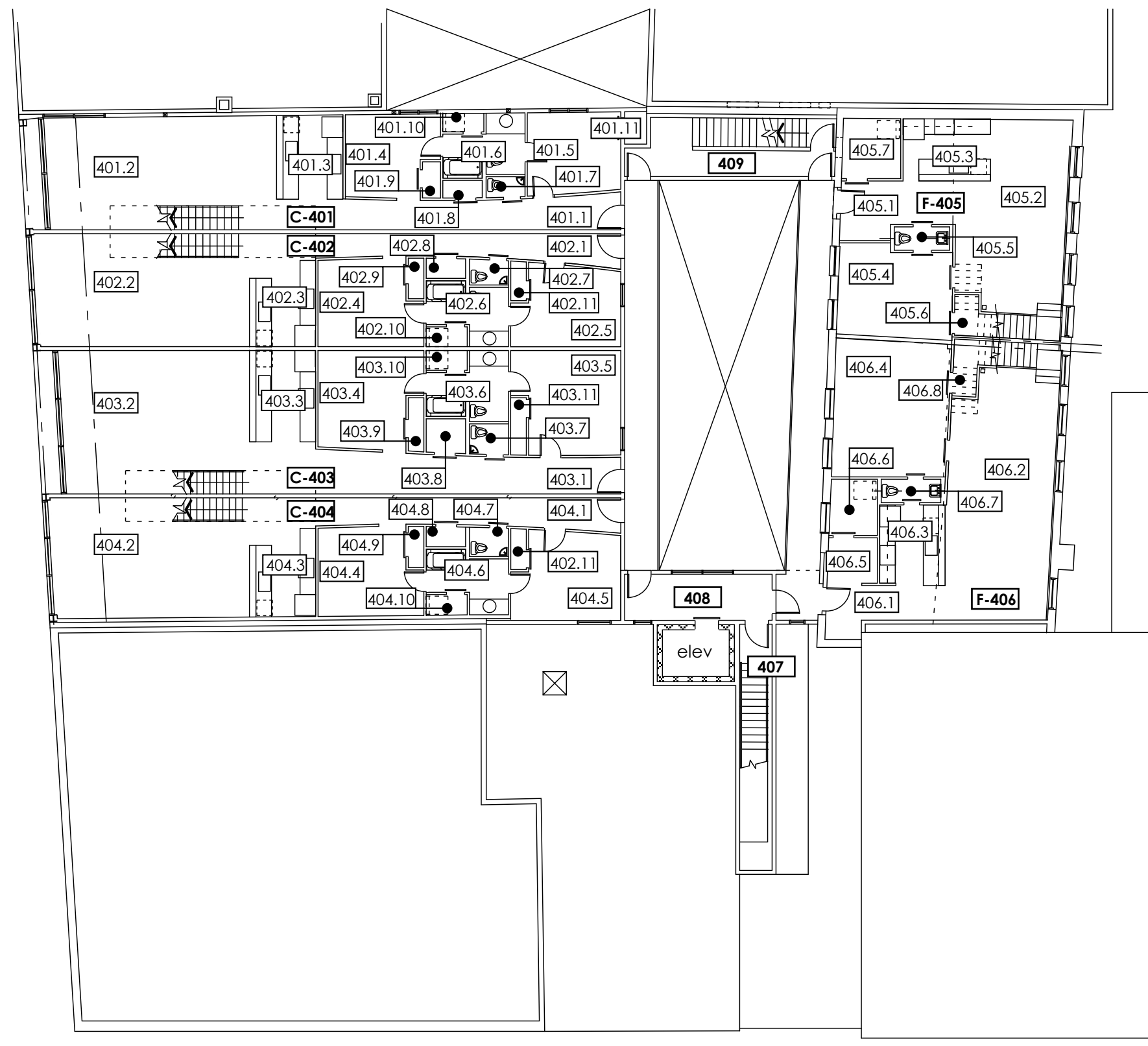
number	room name	finish pkg.	notes
2	SECOND FLOOR		
C-201	residential unit	E	
C-202	residential unit	E	
C-203	residential unit	E	
C-204	residential unit	E	
F-205	residential unit	E	
F-206	residential unit	E	
F-207	residential unit	E	
B-208	residential unit	E	
209	stair	C	lower ceiling to 8' 0" AFF
210	hall	C	
211	stair	G	
3	THIRD FLOOR		
C-301	residential unit	F	
C-302	residential unit	E	
C-303	residential unit	F	
C-304	residential unit	E	
F-305	residential unit	E	
F-306	residential unit	E	
B-307	residential unit	F	
308	stair	C	
309	lobby	C	see A-3.1
310	stair	G	
311	courtyard		
4	FOURTH FLOOR		
C-401	residential unit	F	
C-402	residential unit	F	
C-403	residential unit	F	
C-404	residential unit	F	
F-405	residential unit	F	
F-406	residential unit	F	
407	stair	C	
408	lobby	C	
409	stair	G	
M	MEZZANINE		
C-M401	residential unit	F	
C-M402	residential unit	F	
C-M403	residential unit	F	
C-M404	residential unit	F	
F-M405	residential unit	F	
F-M406	residential unit	F	
M407	stair	G	



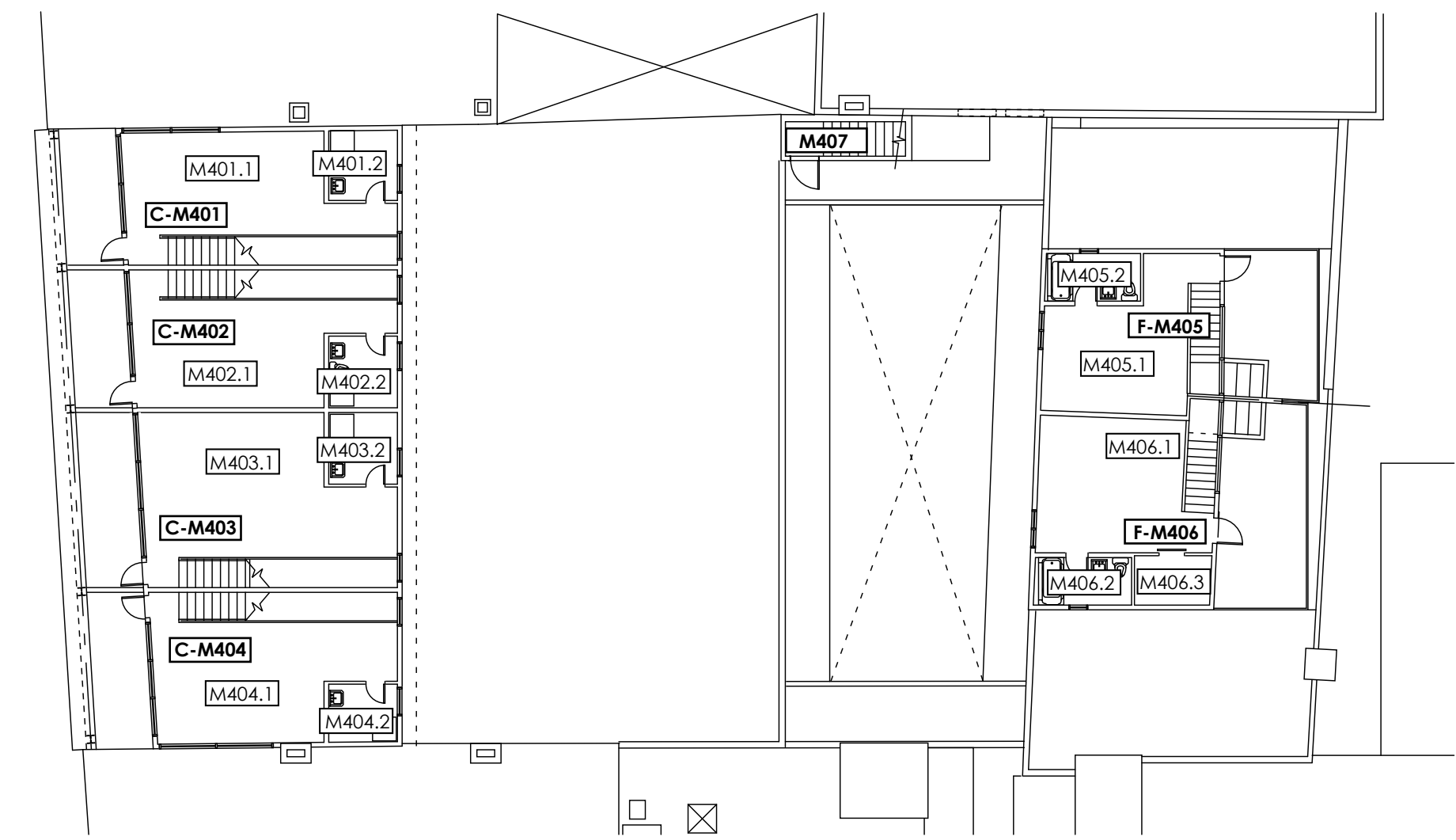
2 second level



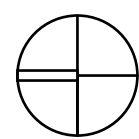
3 third level



4 fourth level



5 mezzanine level



490 Congress Street
Portland, Maine
Kimball Block, LLC
Portland, Maine
James Sterling AIA
Architect
142 High Street
Portland, Maine
FINISH SCHEDULES
scale: 1/16" = 1' 0"
date: 20 May, 2005

A-7.2