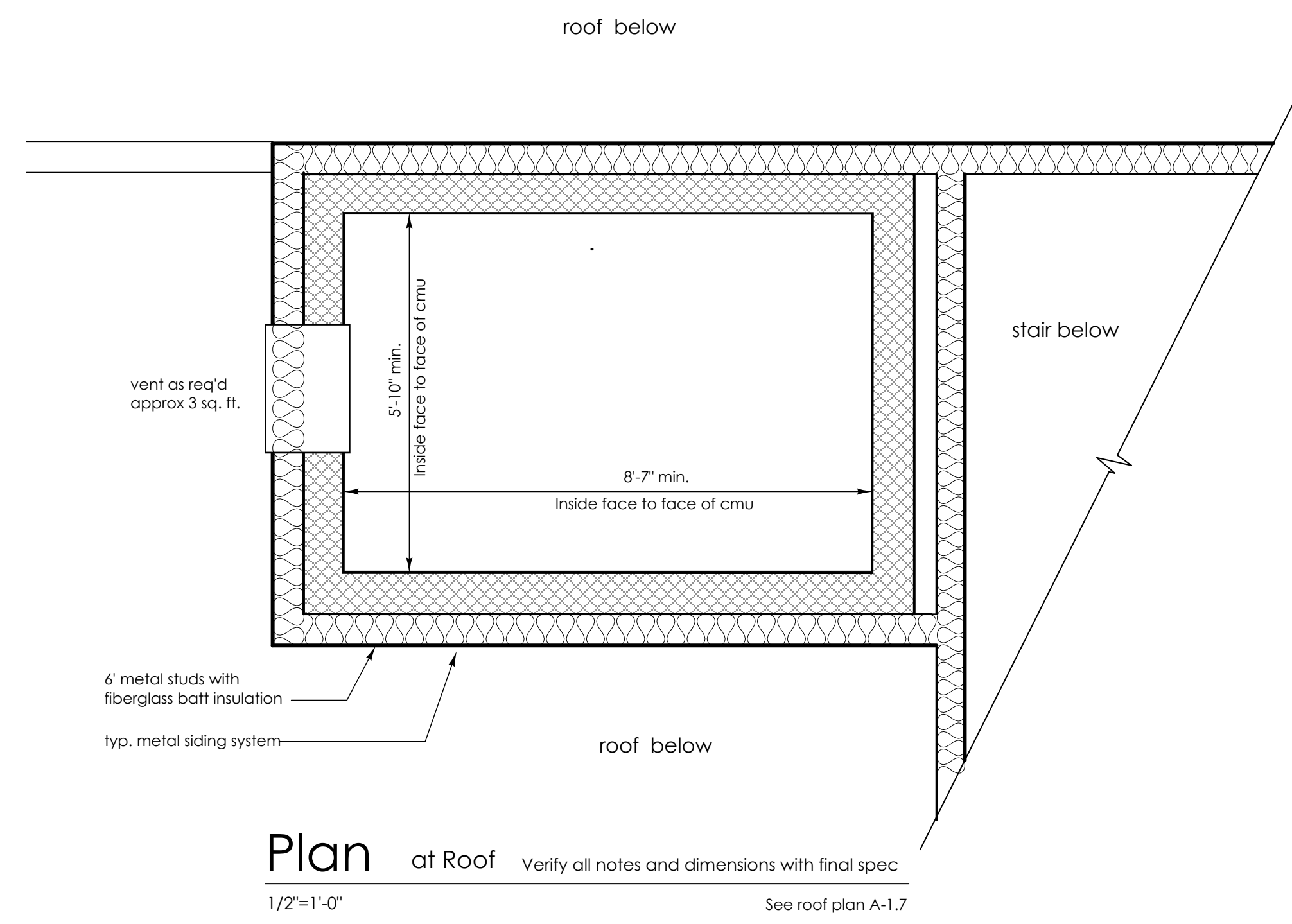
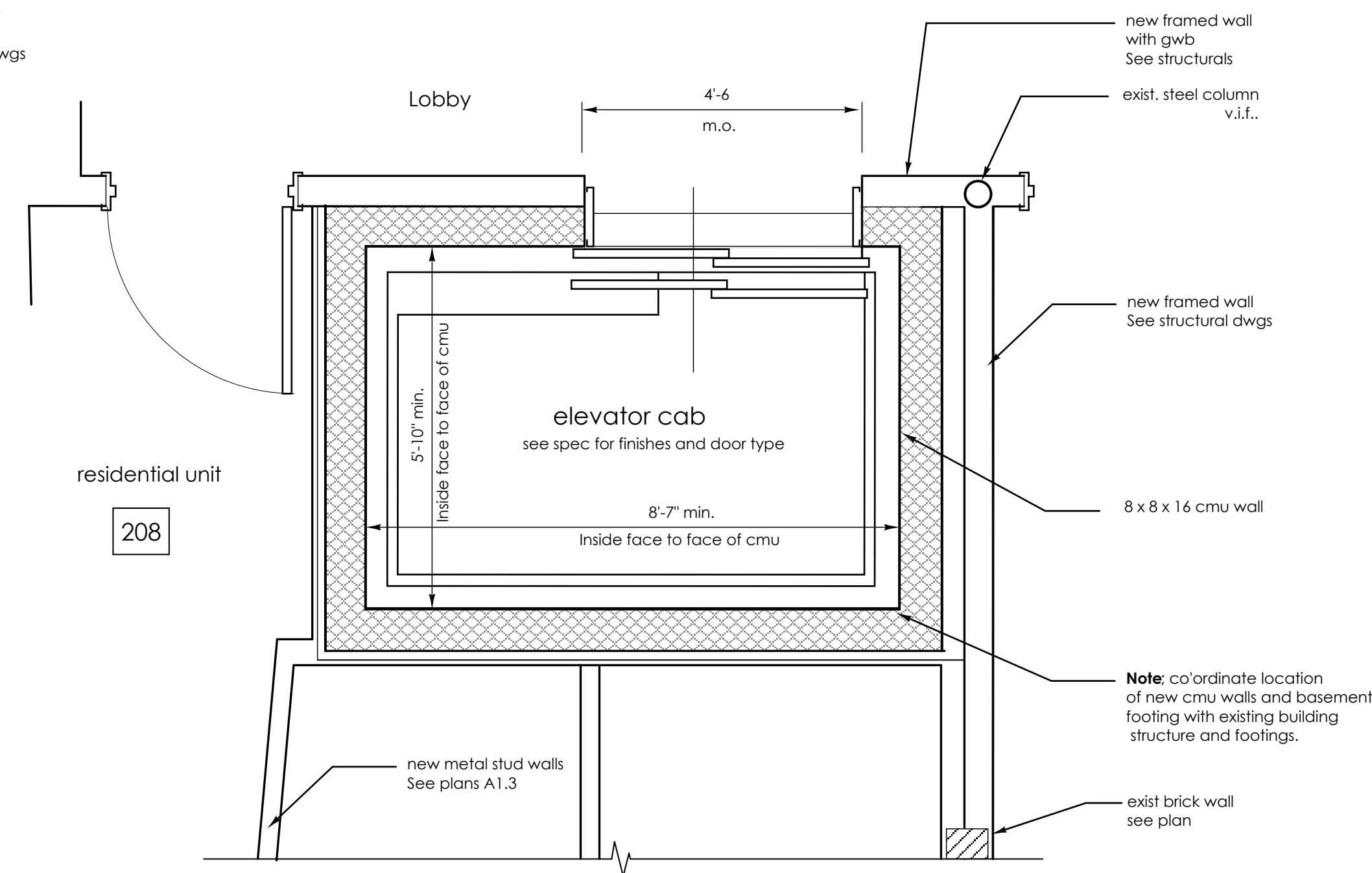


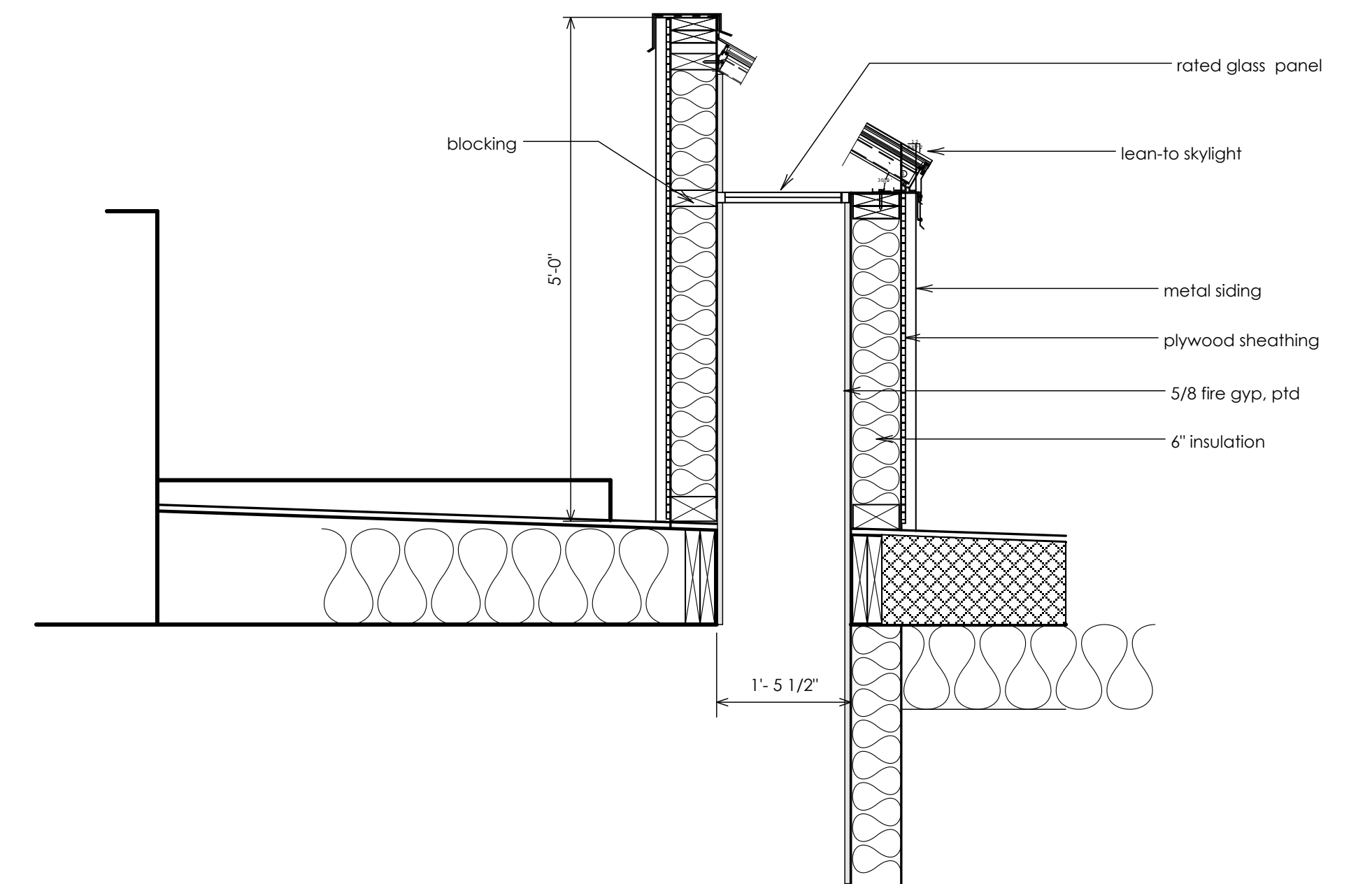
Plan Second floor landing (all landings similar)
1/2"=1'-0" See A-1.3



Plan at Roof
1/2"=1'-0" See roof plan A-1.7



Plan Second floor landing (all landings similar)
1/2"=1'-0" Verify all notes and dimensions with final spec See A-1.3



Lean-to Skylight (others similar)
3/4"=1'-0"

490 Congress Street
Portland, Maine
Kimball Block, LLC
Portland, Maine
James Sterling AIA
Architect
142 High Street
Portland, Maine

Elevator/Assorted details
scale: as noted
date: 20 May 2005

A-5.4