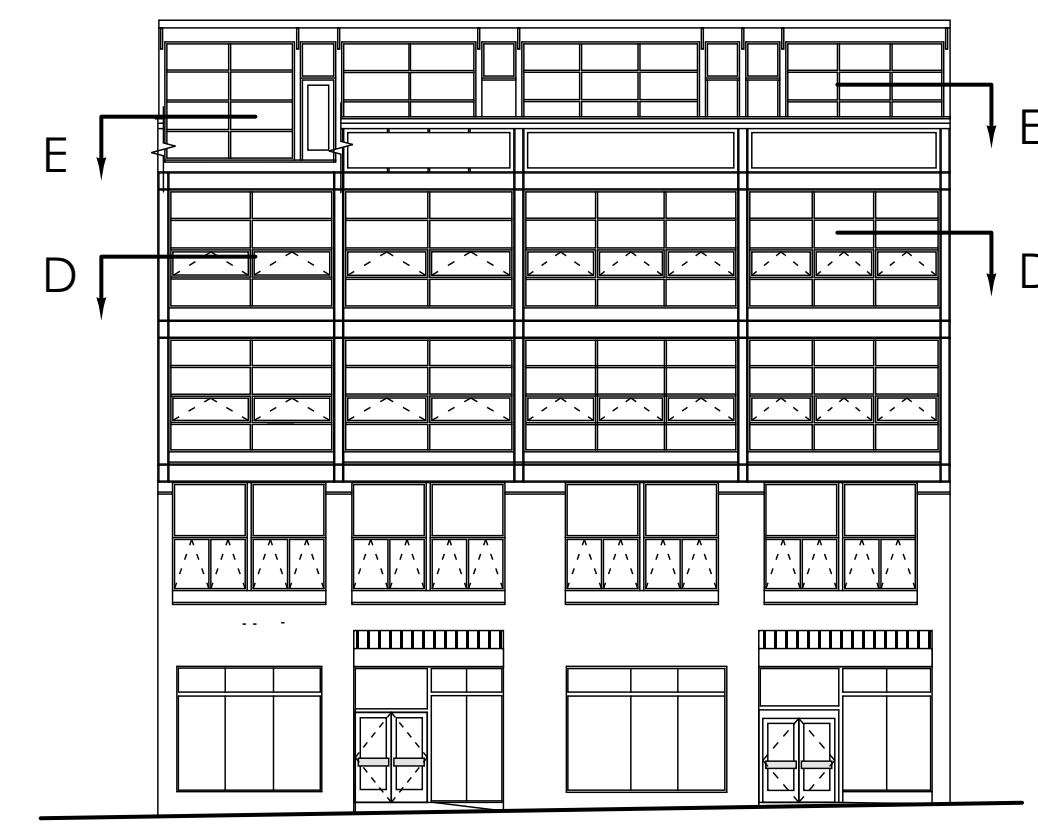
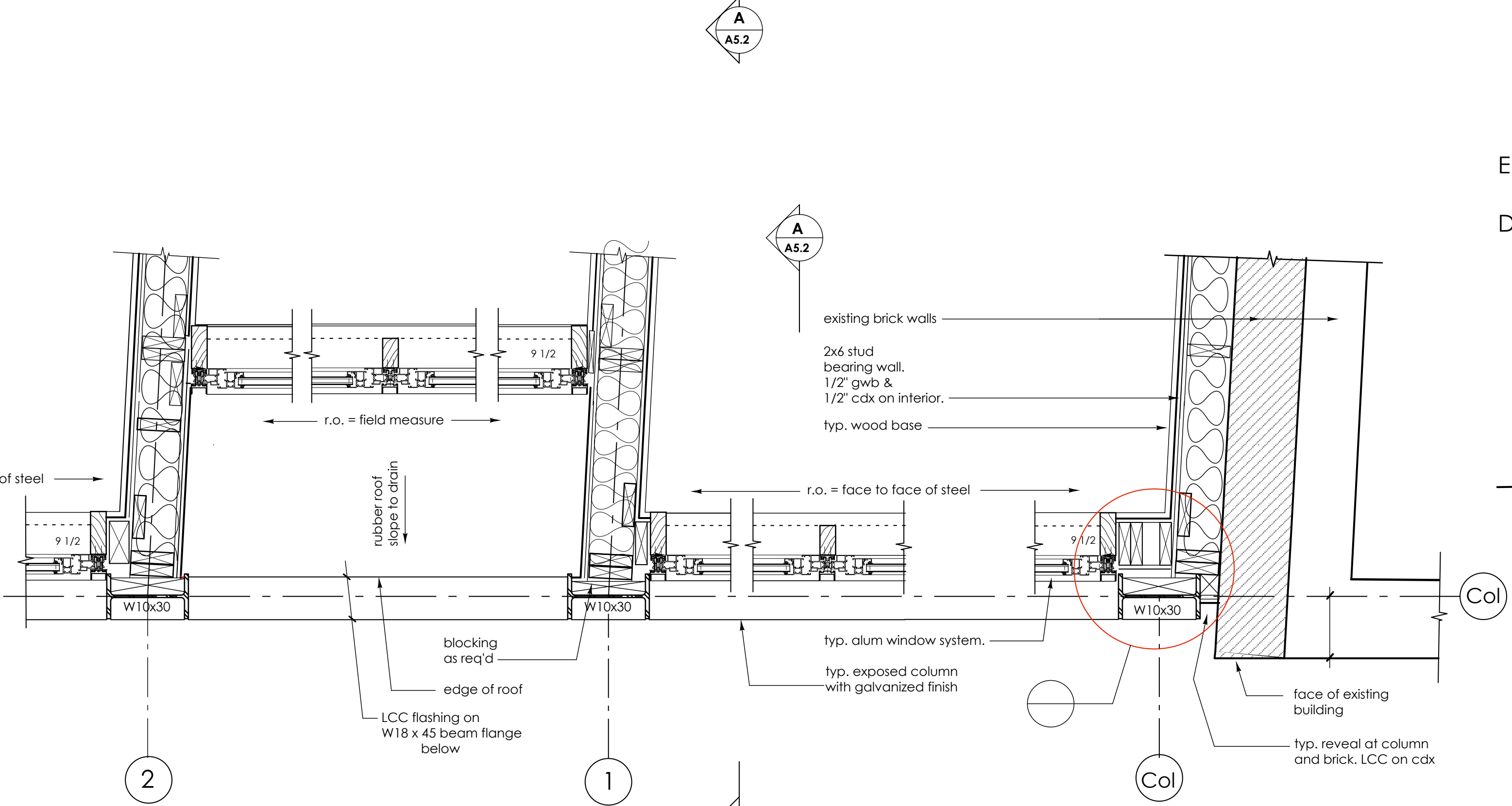
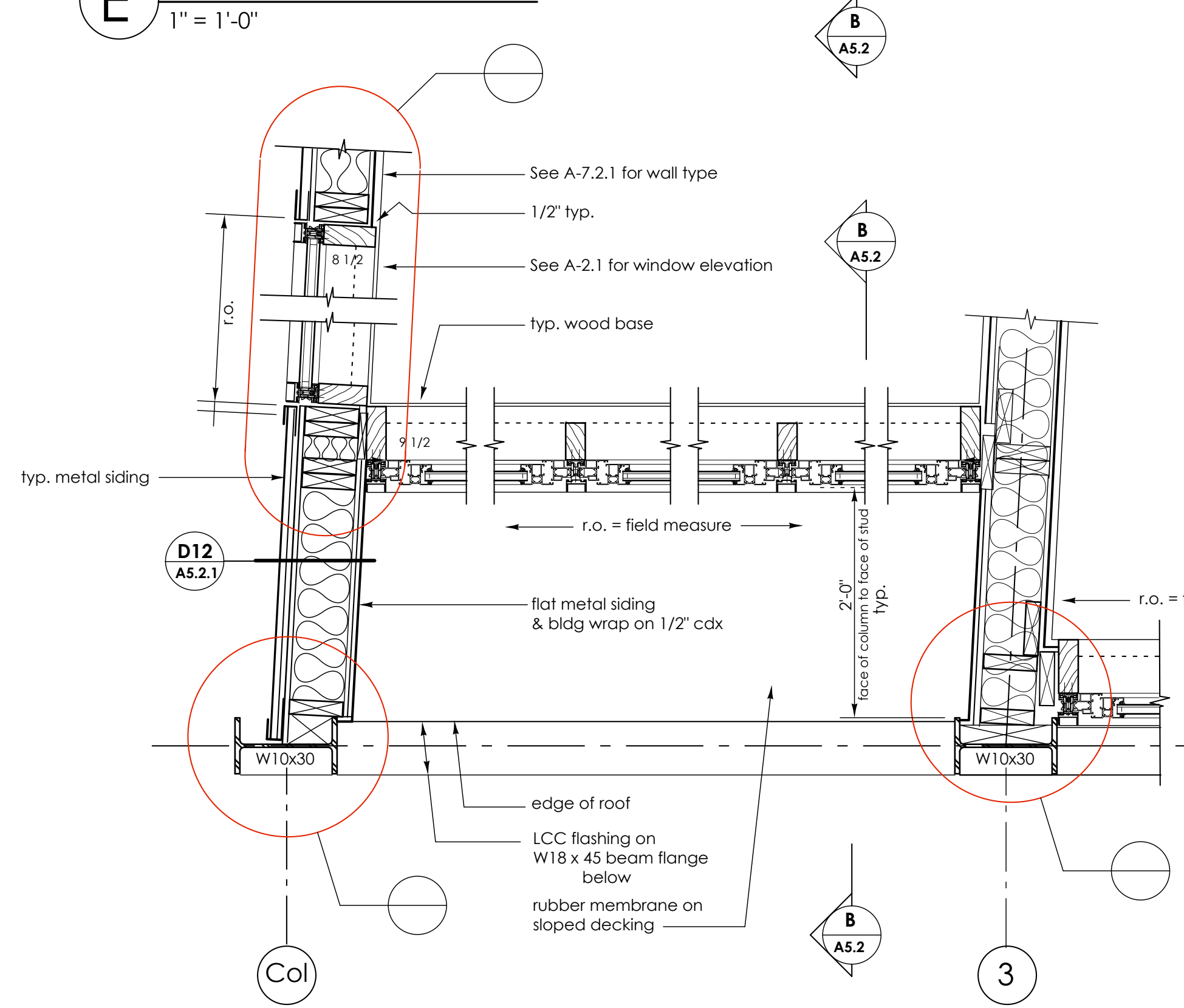


**E Mezzanine Plan Details**  
1" = 1'-0"



**D Fourth Floor Plan Details**  
1" = 1'-0"

490 Congress Street Portland, Maine	
Kimball Building, LLC Portland, Maine	
James Sterling AIA Architect 142 High Street Portland, Maine	<b>A-5.2.3</b>
Plan Details@ Congress St. Facade	
scale: 1" = 1'-0" date: 20 May, 2005	