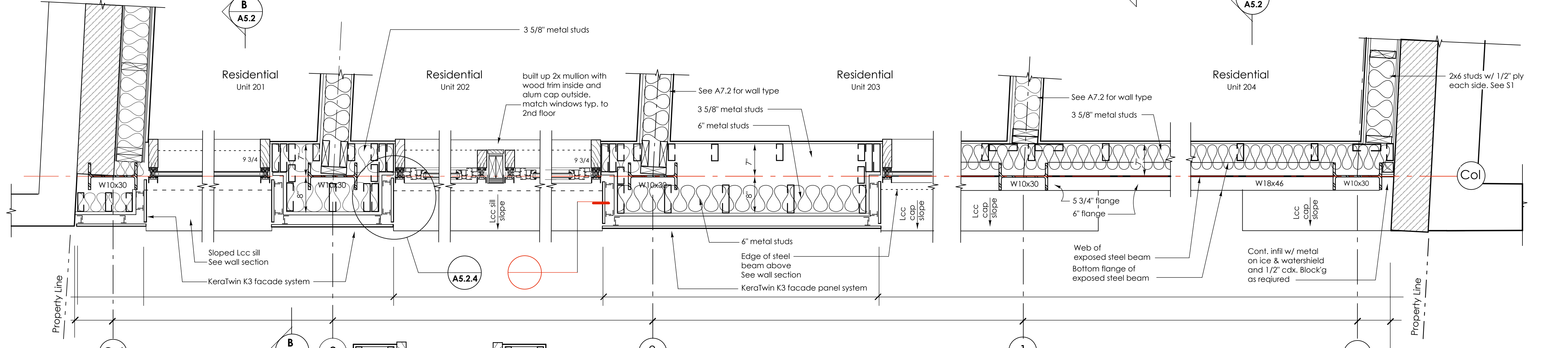
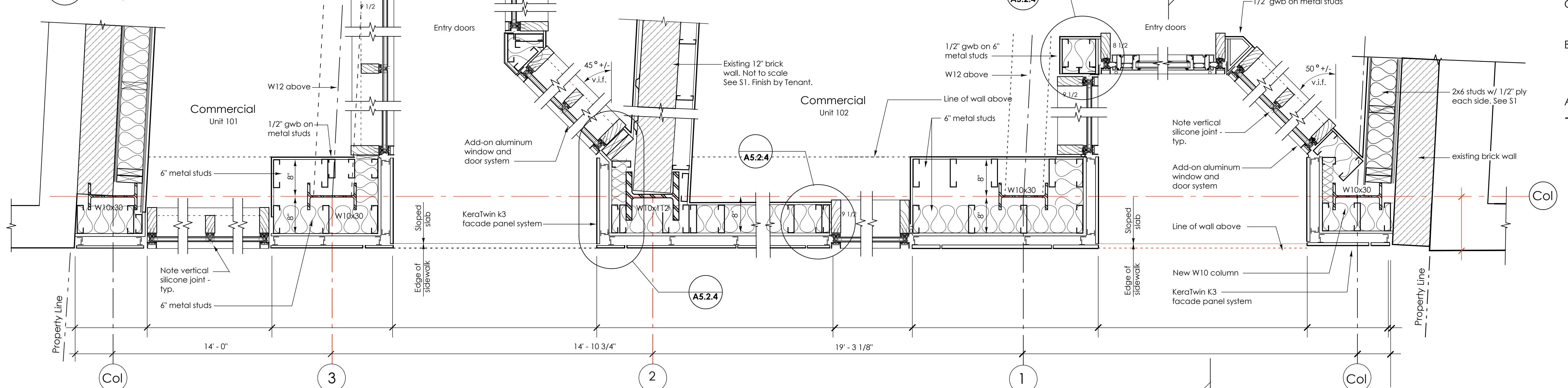


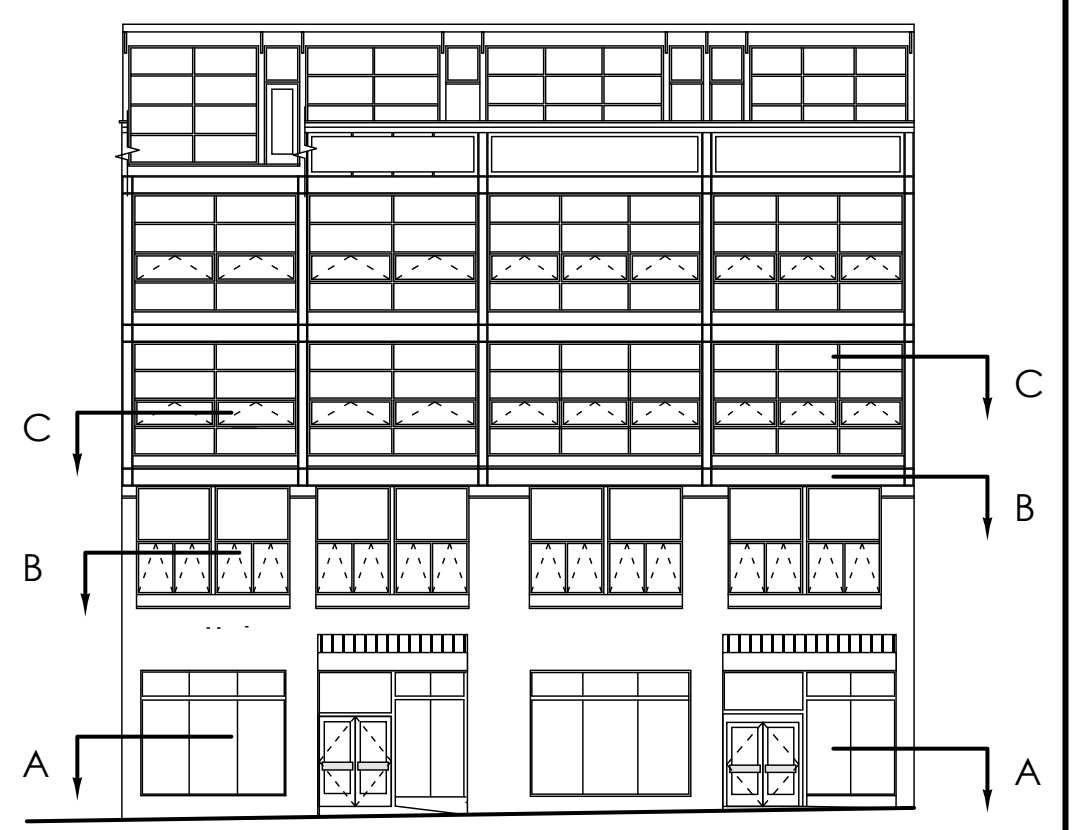
**C Third Floor Plan Details**  
1" = 1'-0"



**B Second Floor Plan Details**  
1" = 1'-0"



**A First Floor Plan Details**  
1" = 1'-0"



Elevation

490 Congress Street  
Portland, Maine  
Kimball Building, LLC  
Portland, Maine  
James Sterling AIA  
Architect  
142 High Street  
Portland, Maine  
Plan Details @  
Congress Street Facade  
scale: 1" = 1'-0"  
date: 20 May, 2005

**A-5.2.2**