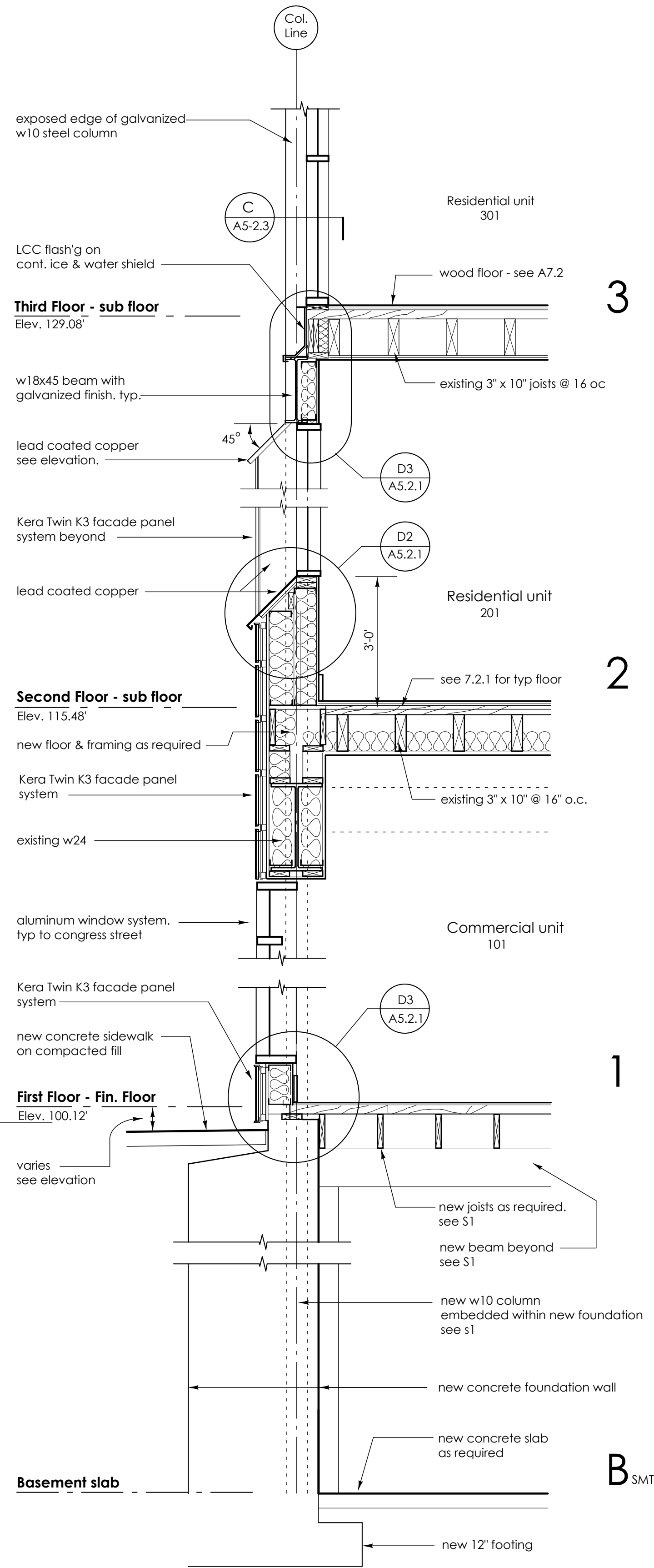
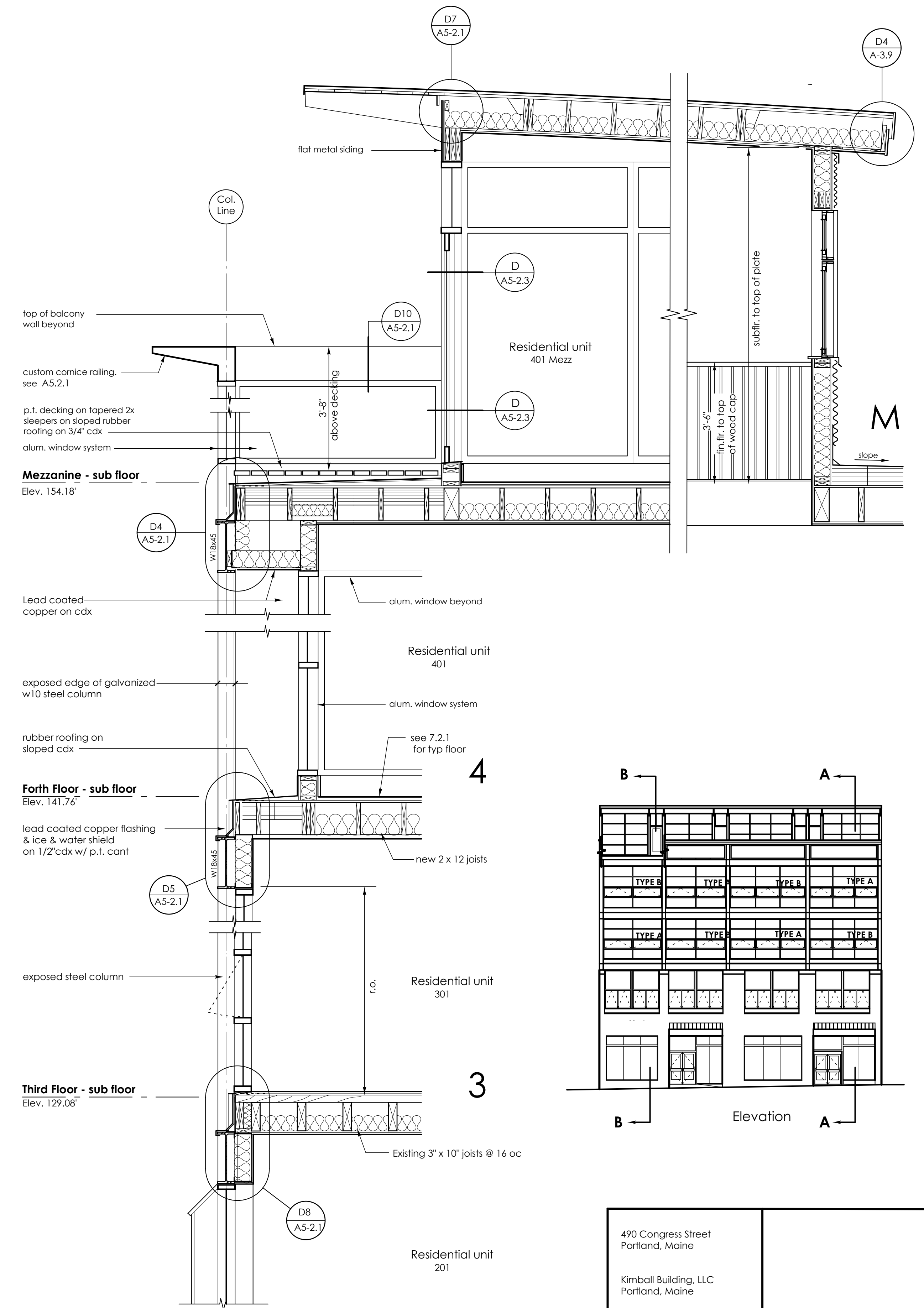


Wall Section A  
1/2" = 1'-0"



Wall Section B - Bottom  
1/2" = 1'-0"



Wall Section B - Top  
1/2" = 1'-0"



490 Congress Street  
Portland, Maine  
Kimball Building, LLC  
Portland, Maine  
James Sterling AIA  
Architect  
142 High Street  
Portland, Maine

WALL SECTIONS  
scale: 1/2" = 1'-0"  
date: 20 May, 2005

A-5.2