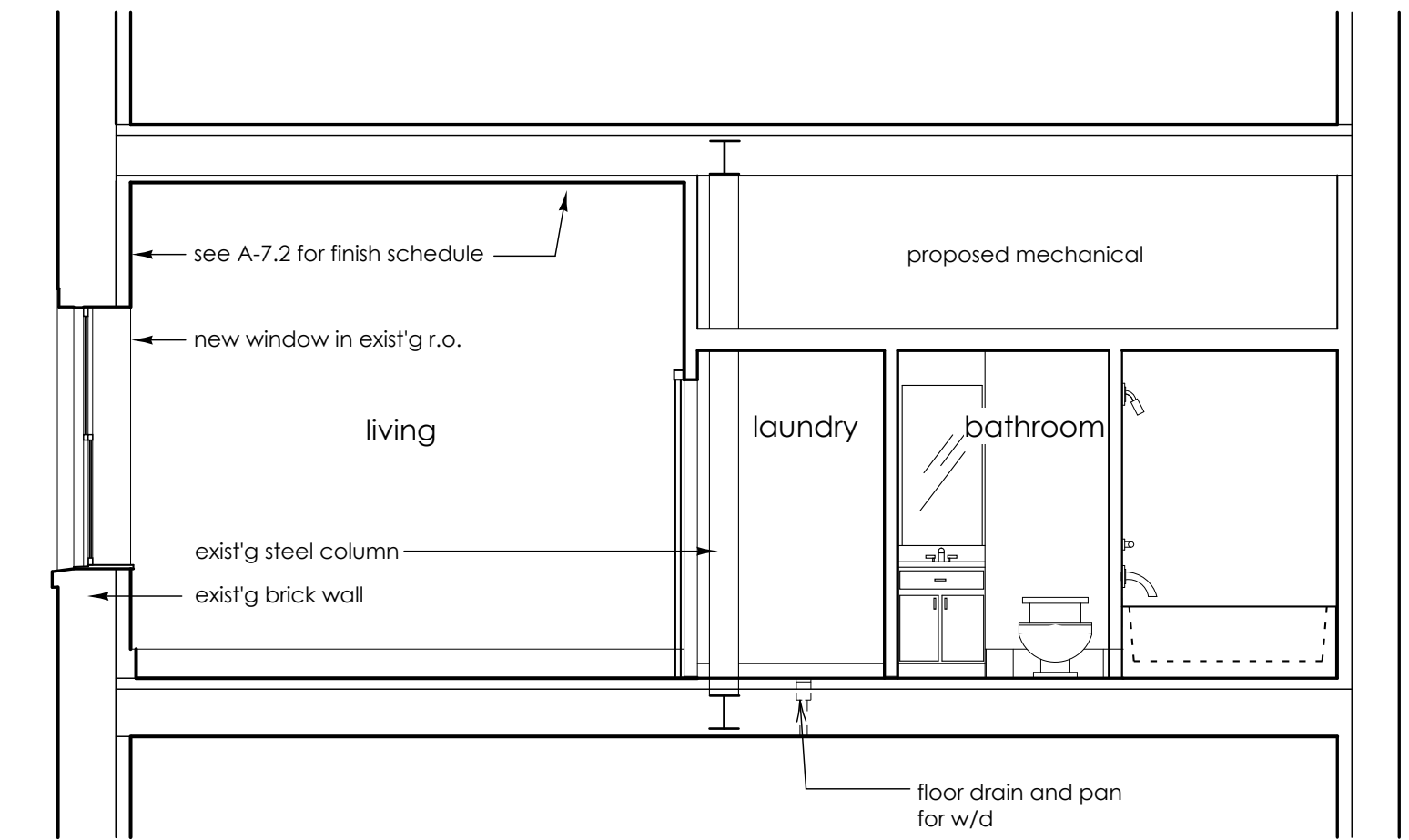
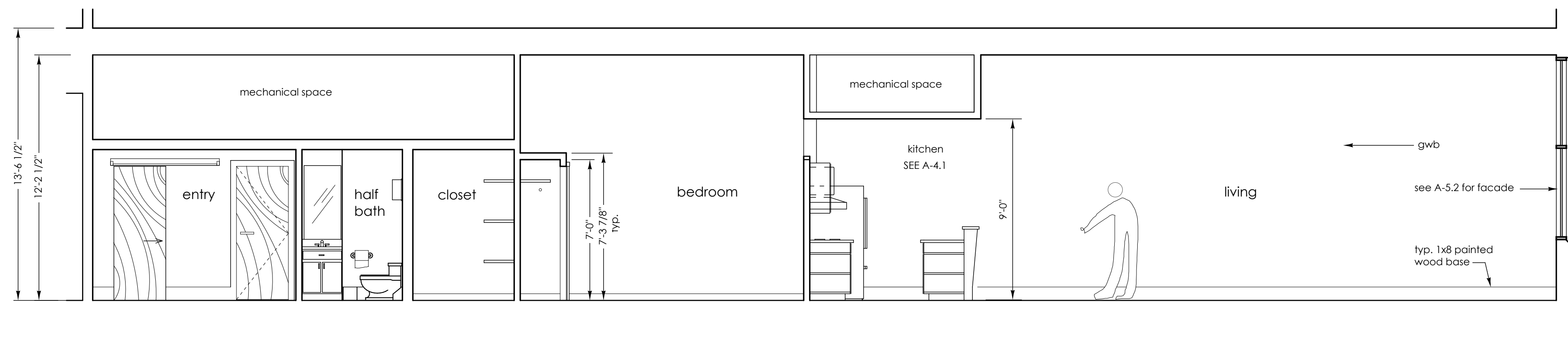


1 east interior elevation, typ. fourth floor, congress street unit with mezzanine (403 shown)

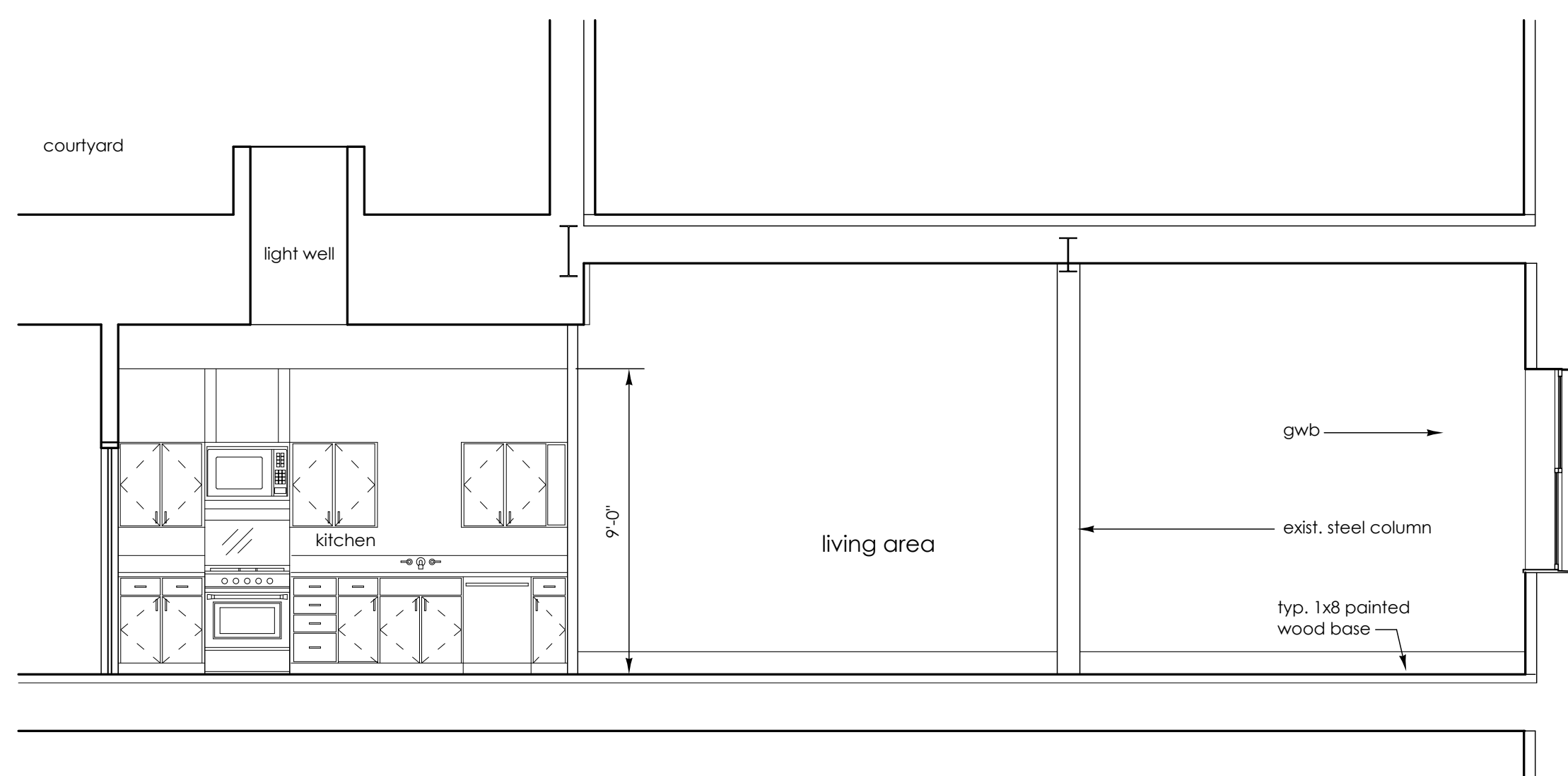
NOTE: Existing column locations TBD. In areas where a conflict may occur, verify location and coordinate with architect prior to roughing in plumbing locations.



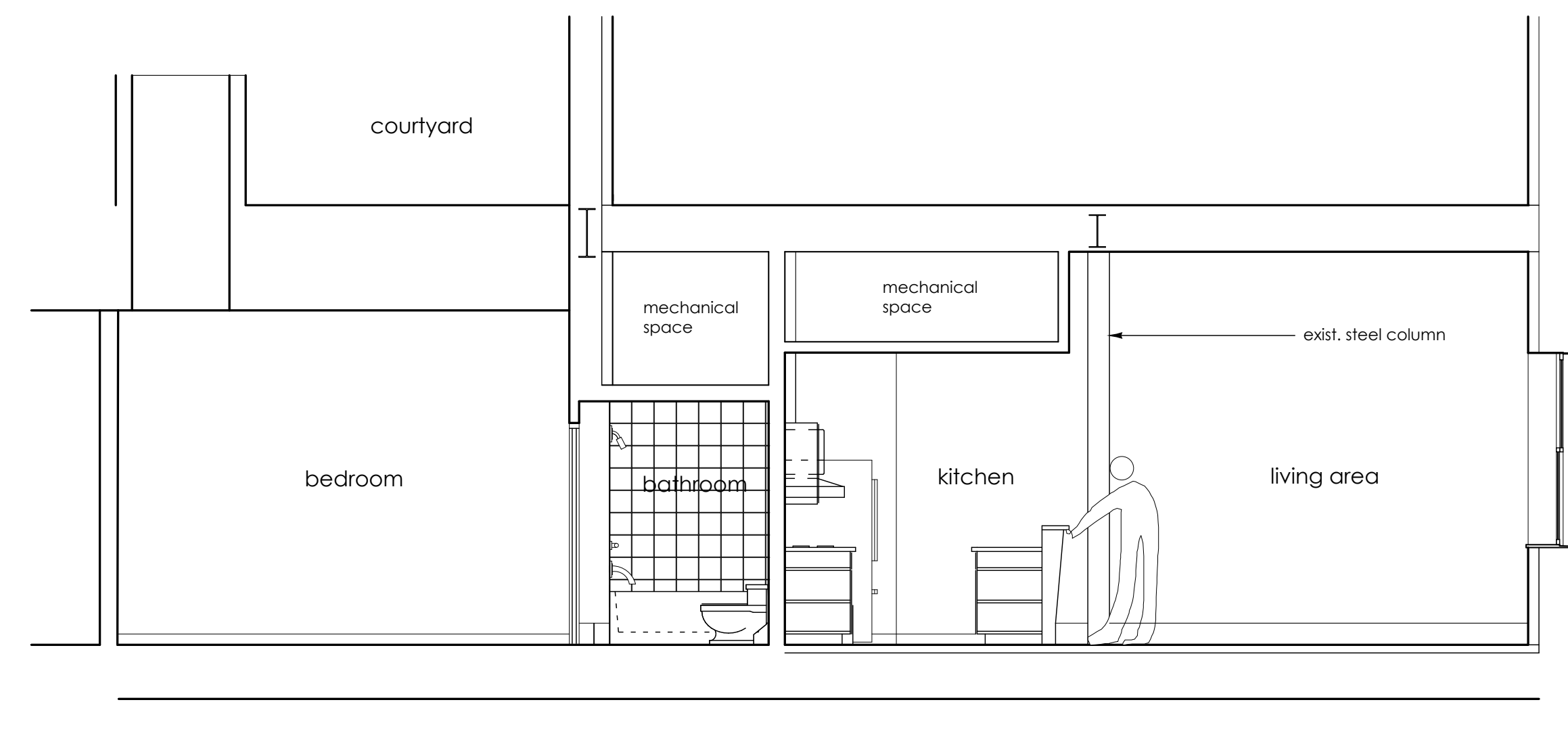
4 west interior elevation, typ. third floor, free street unit (306 shown)



2 west interior elevation, typ. second floor, congress street unit (204 shown)



3 east interior elevation, typ. second floor, free street unit (207 shown)



5 east interior elevation, typ. second floor, free street unit (205 shown)

490 Congress Street  
Portland, Maine  
Kimball Building, LLC  
Portland, Maine  
James Sterling AIA  
Architect  
142 High Street  
Portland, Maine  
INTERIOR ELEVATIONS -  
CONGRESS STREET  
scale: 1/4" = 1'-0"  
date: 20 May 2005