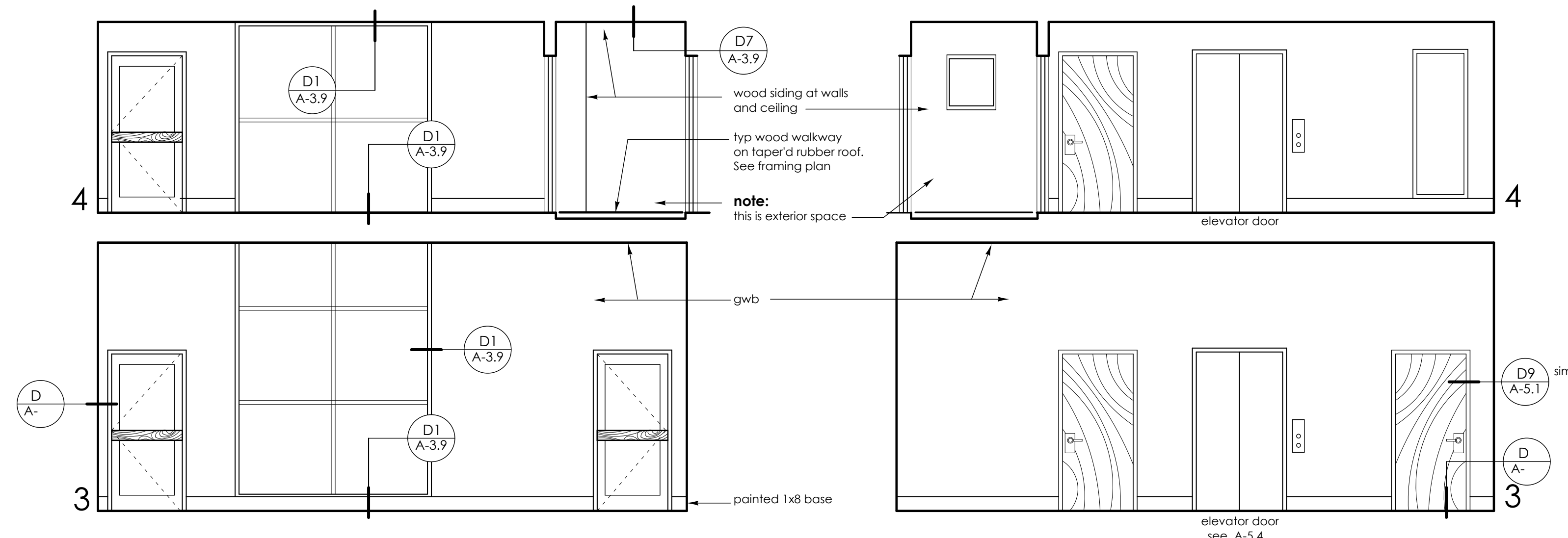
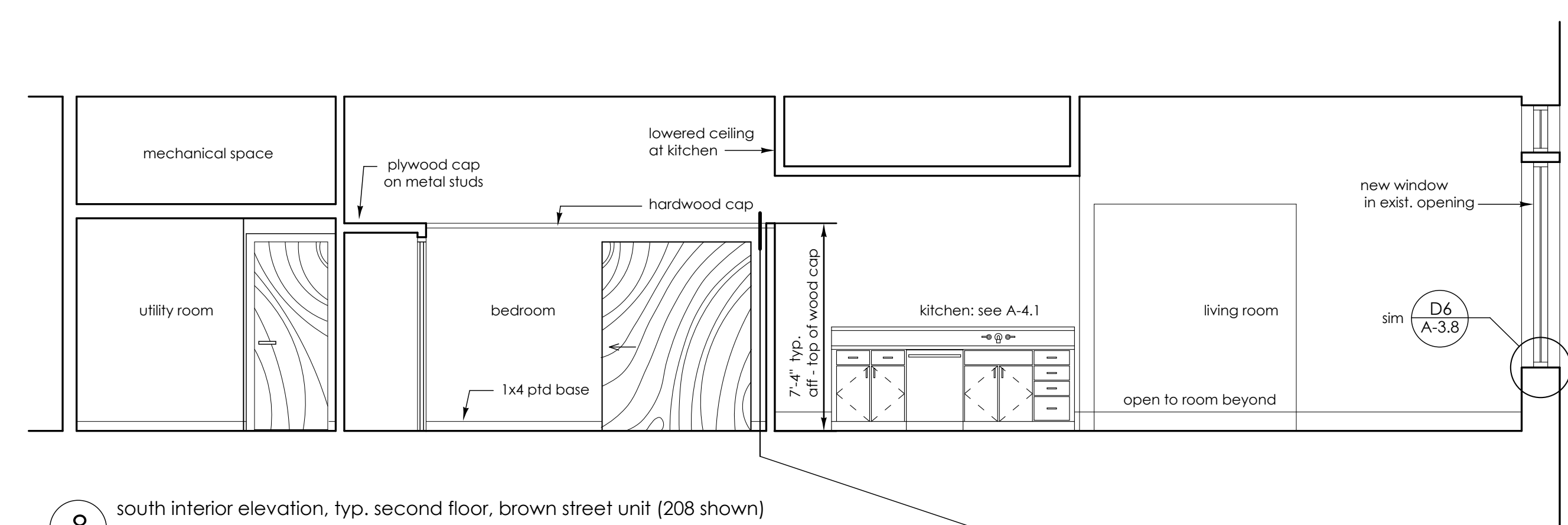


1 east interior elevation, first floor lobby 2 south interior elevation, first floor lobby
 See A-3.6 for opp. elevation and oak ply details

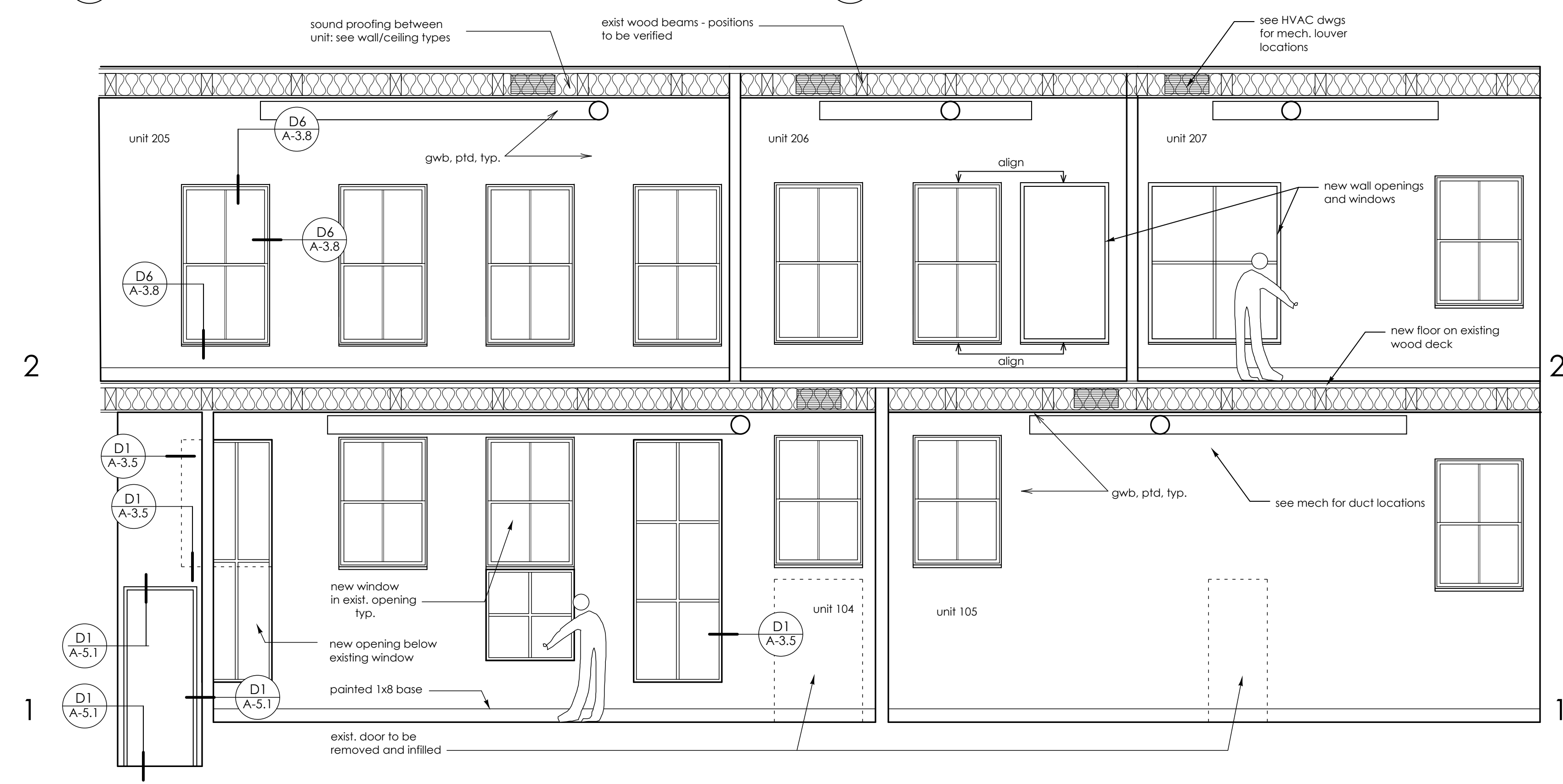
3 west interior elevation (toward Brown St.), first floor entry lobby 4 east interior elevation (toward interior), first floor entry lobby 5 west interior elevation (toward brown street), first floor stair lobby



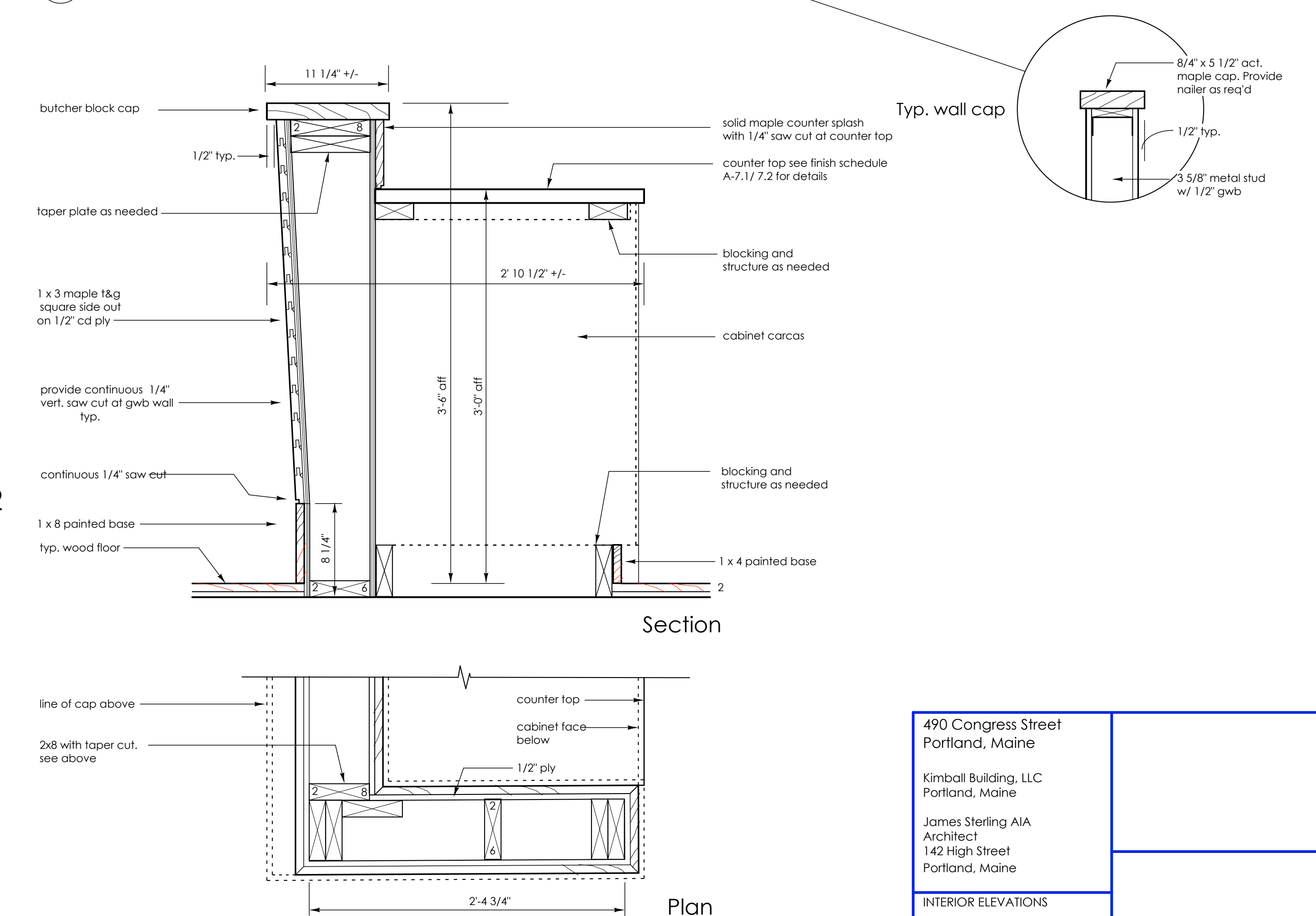
3 elevator lobby elevation, third floor and fourth floor towards courtyard 4 elevator lobby



8 south interior elevation, typ. second floor, brown street unit (208 shown)



1 free street units interior elevation, first and second floor 2



10 Typ. Kitchen Island Surround
 1 1/2" = 1'-0"

490 Congress Street Portland, Maine	A-4.2
Kimball Building, LLC Portland, Maine	
James Sterling AIA Architect 142 High Street Portland, Maine	
INTERIOR ELEVATIONS	
scale: 1/4"=1'-0" unless noted date: 20 May 2005	