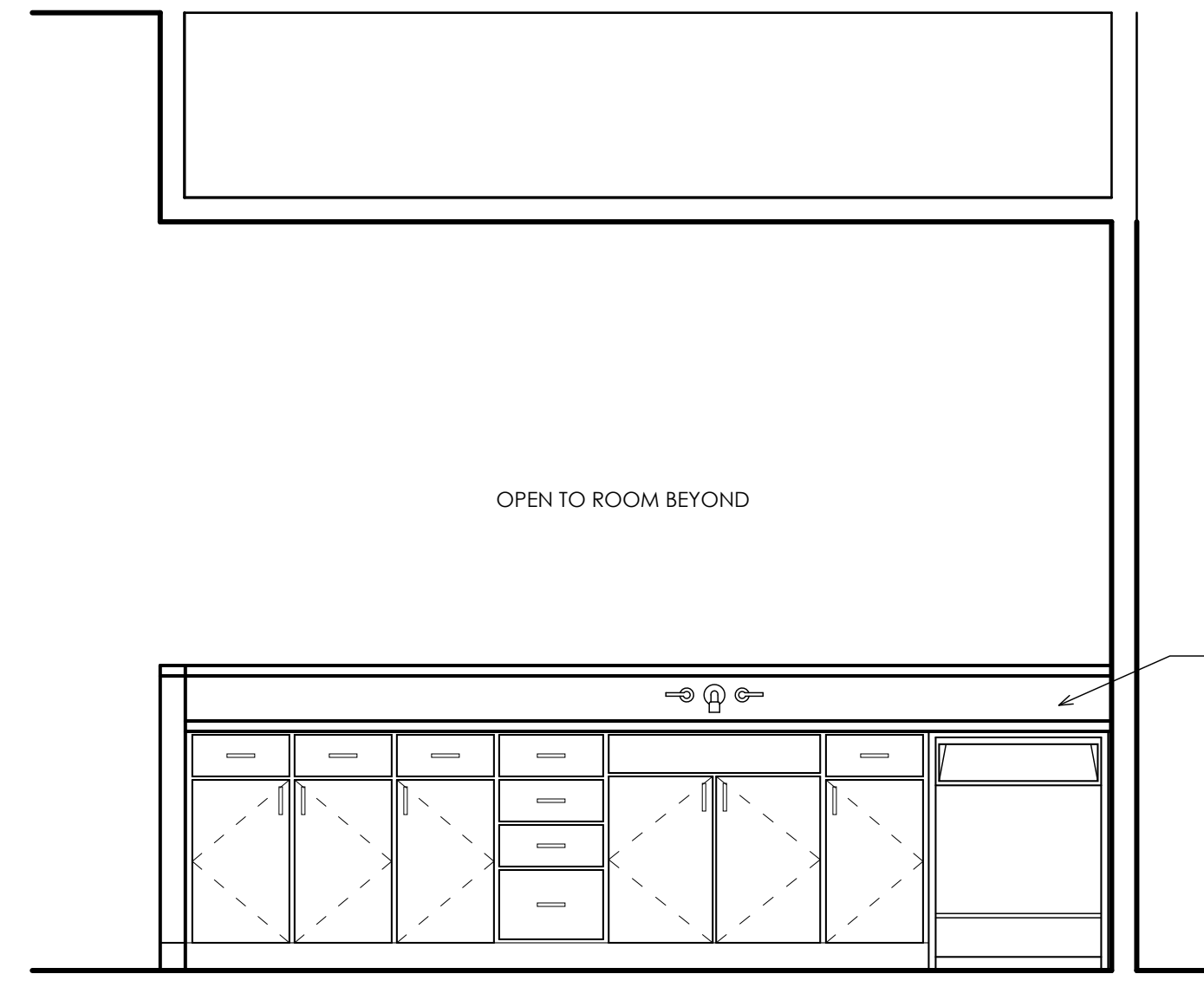
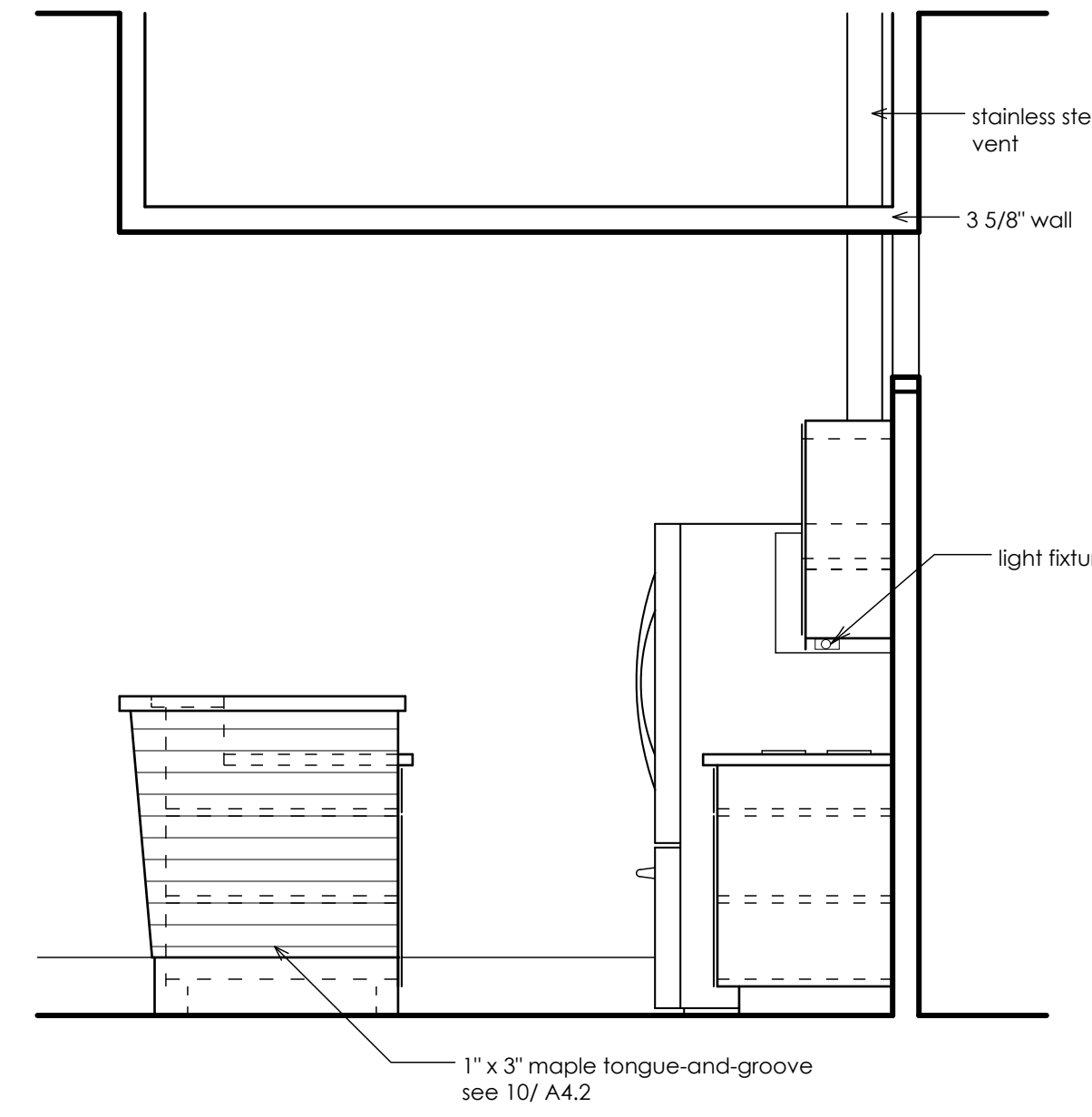


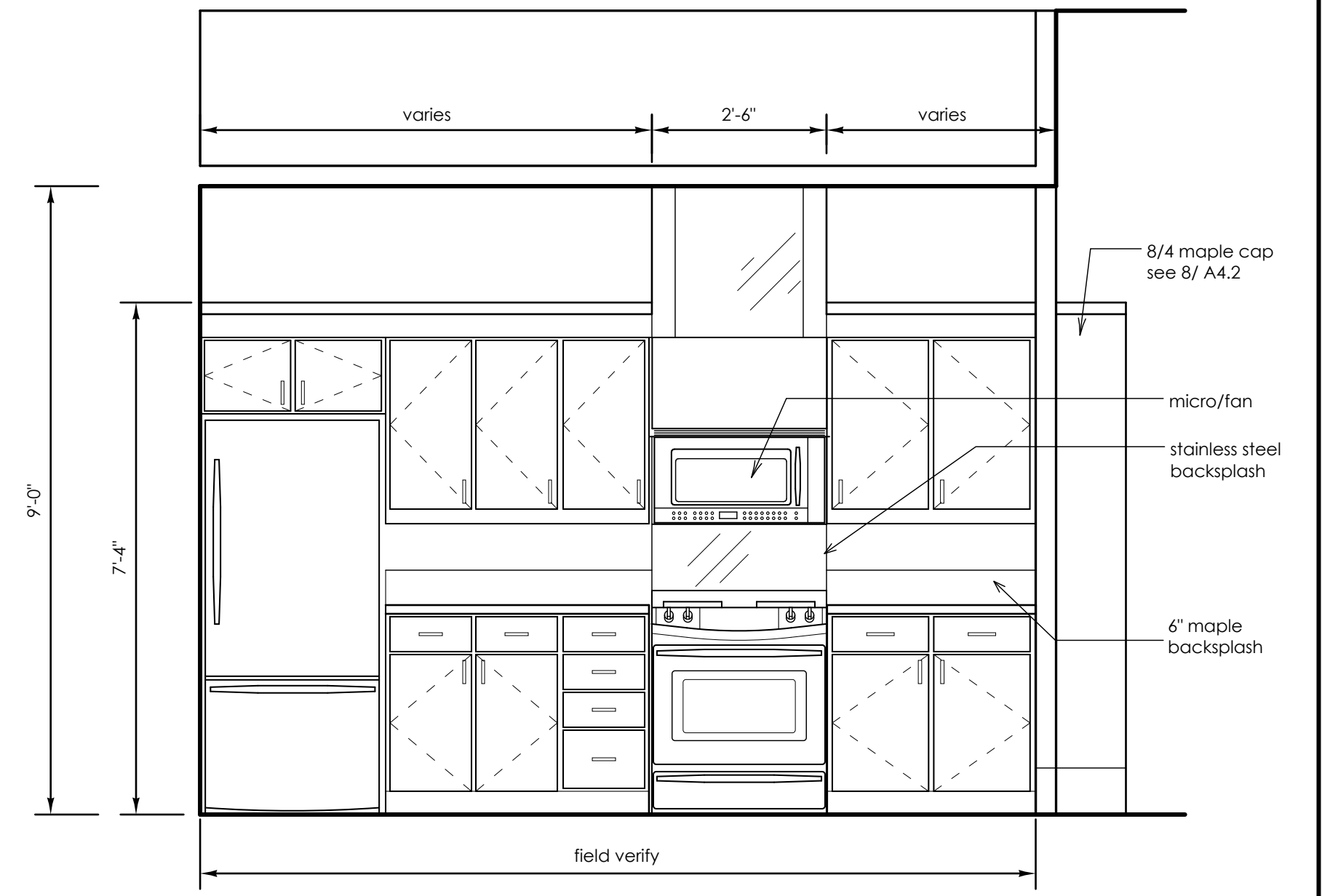
1 typ. kitchen plan



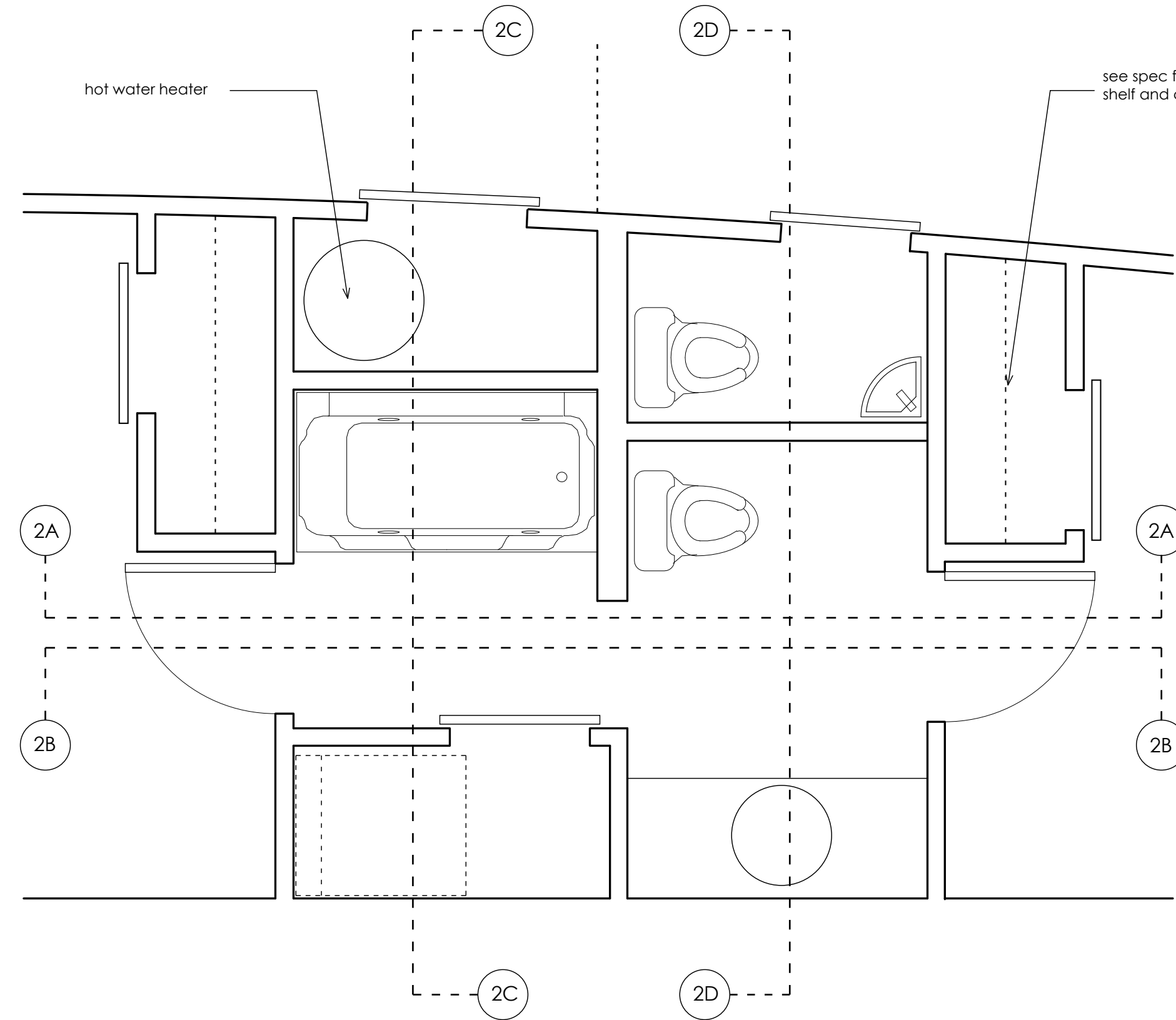
1A typ. kitchen elevation



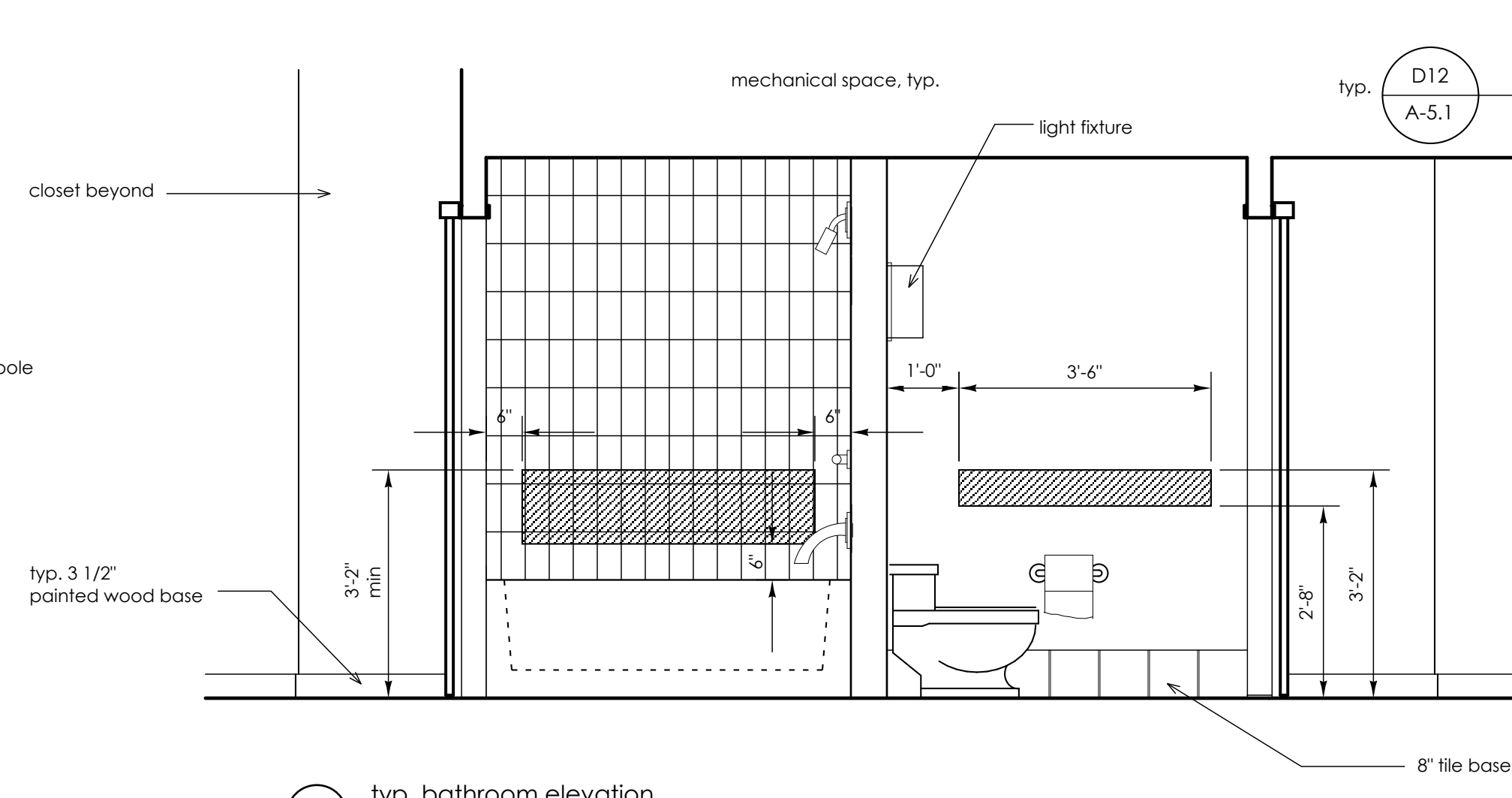
1B typ. kitchen elevation



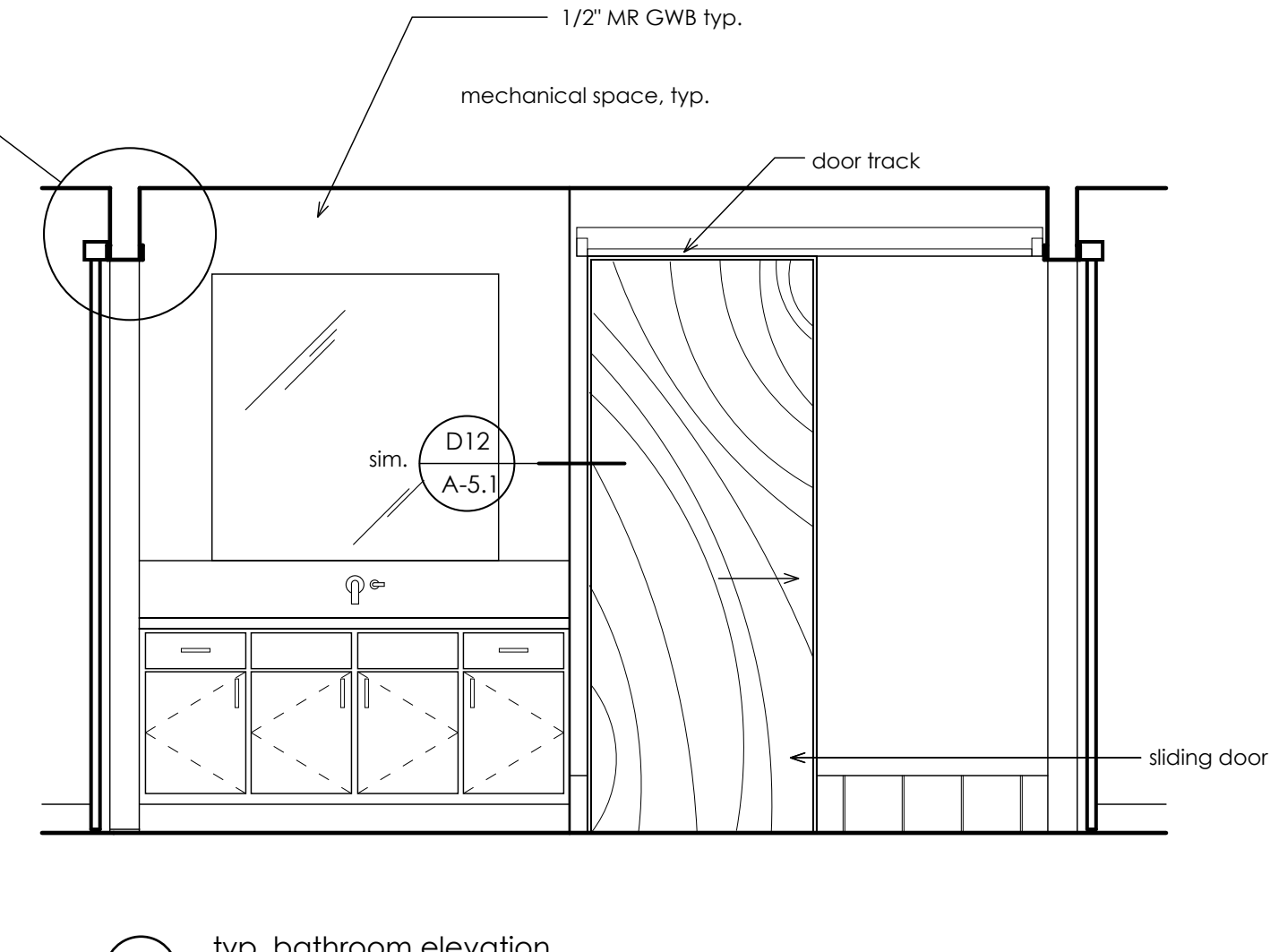
1C typ. kitchen elevation



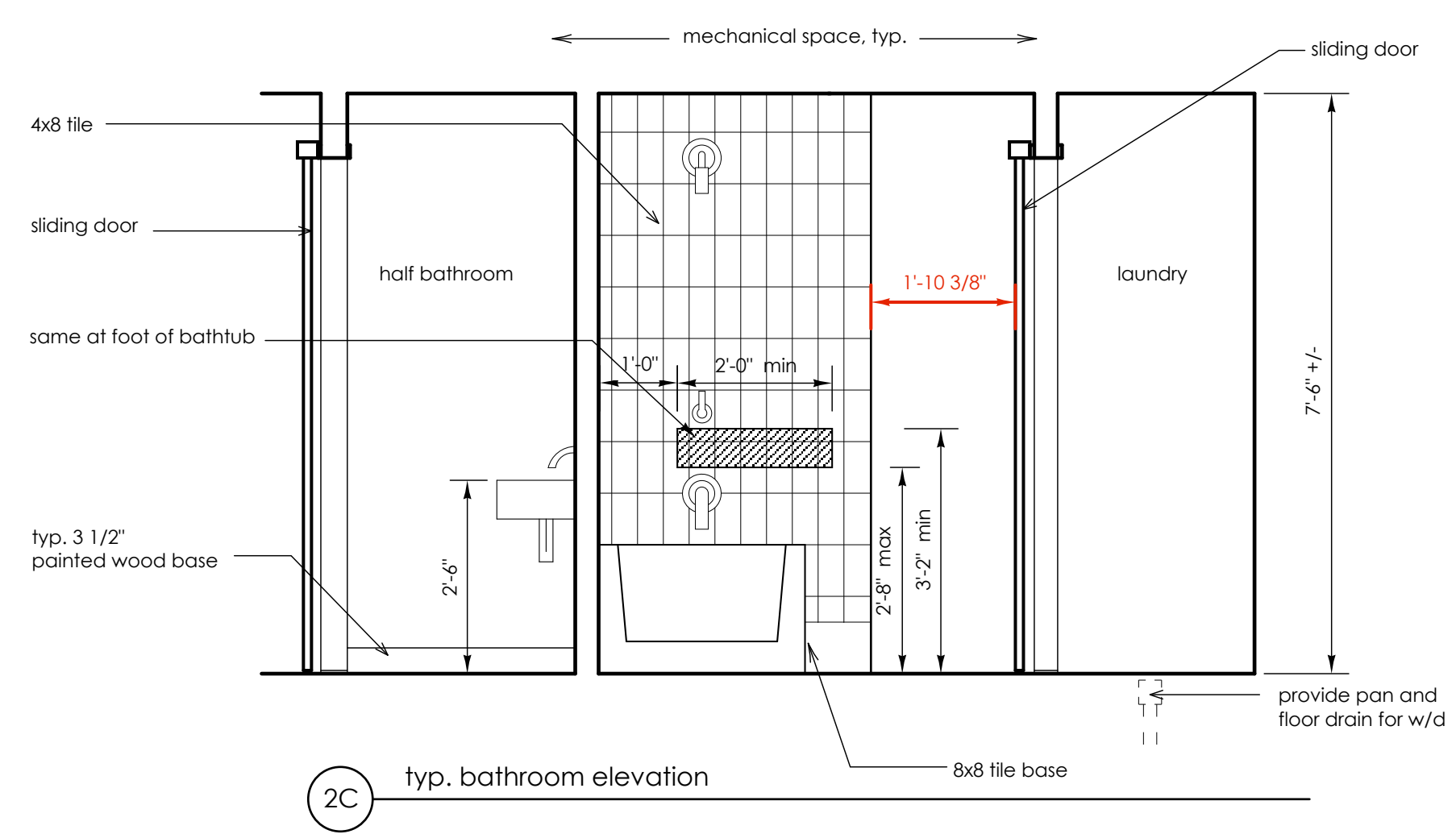
2 typ. congress street bathroom plan



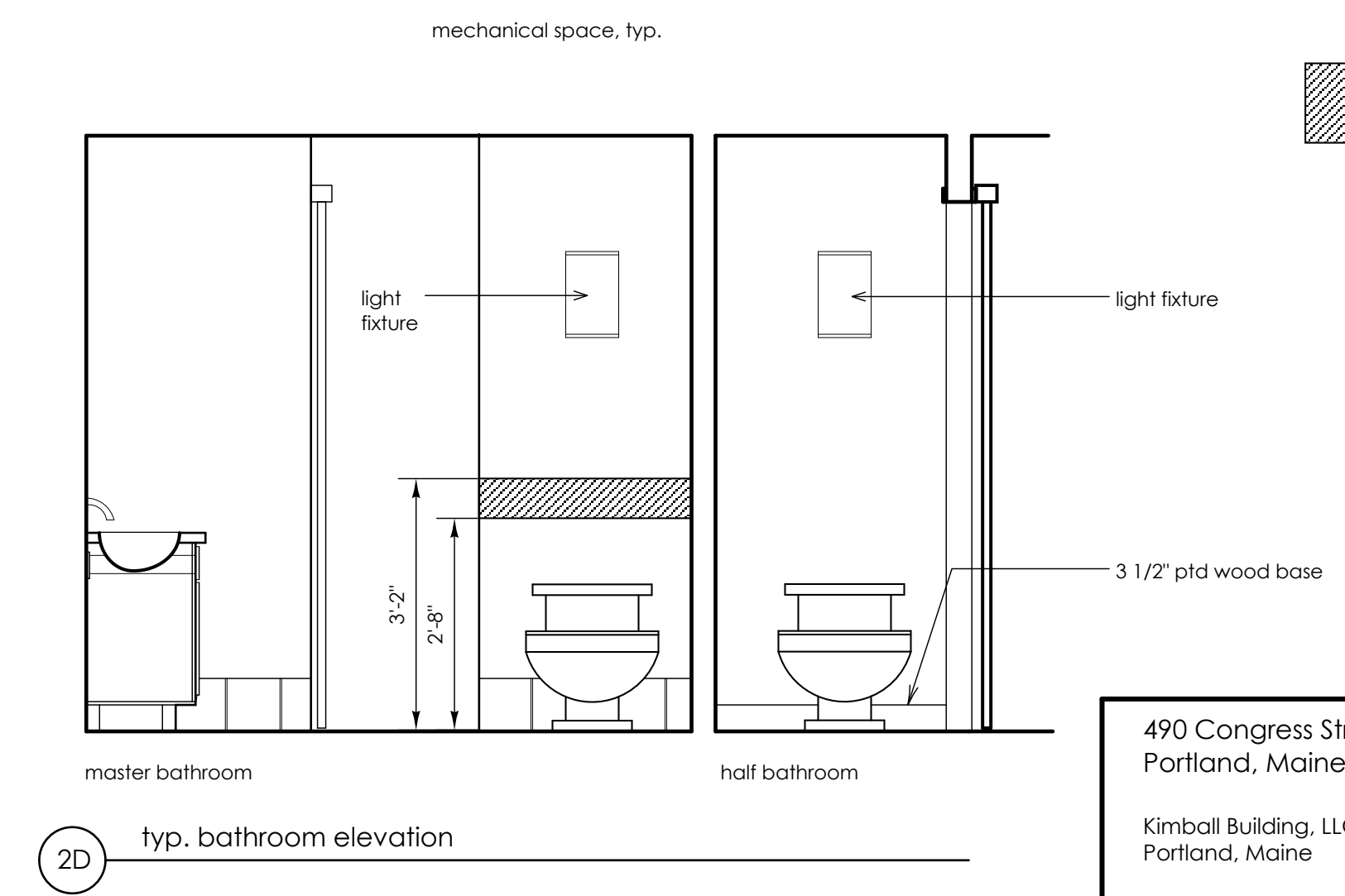
2A typ. bathroom elevation



2B typ. bathroom elevation



2C typ. bathroom elevation



2D typ. bathroom elevation

third and fourth floor congress street units only; additional blocking required for potential grab bars and handrails

490 Congress Street
Portland, Maine
Kimball Building, LLC
Portland, Maine
James Sterling AIA
Architect
142 High Street
Portland, Maine
INTERIOR ELEVATION
DETAILS
scale: 1/2" = 1'-0"
date: 20 May 2005