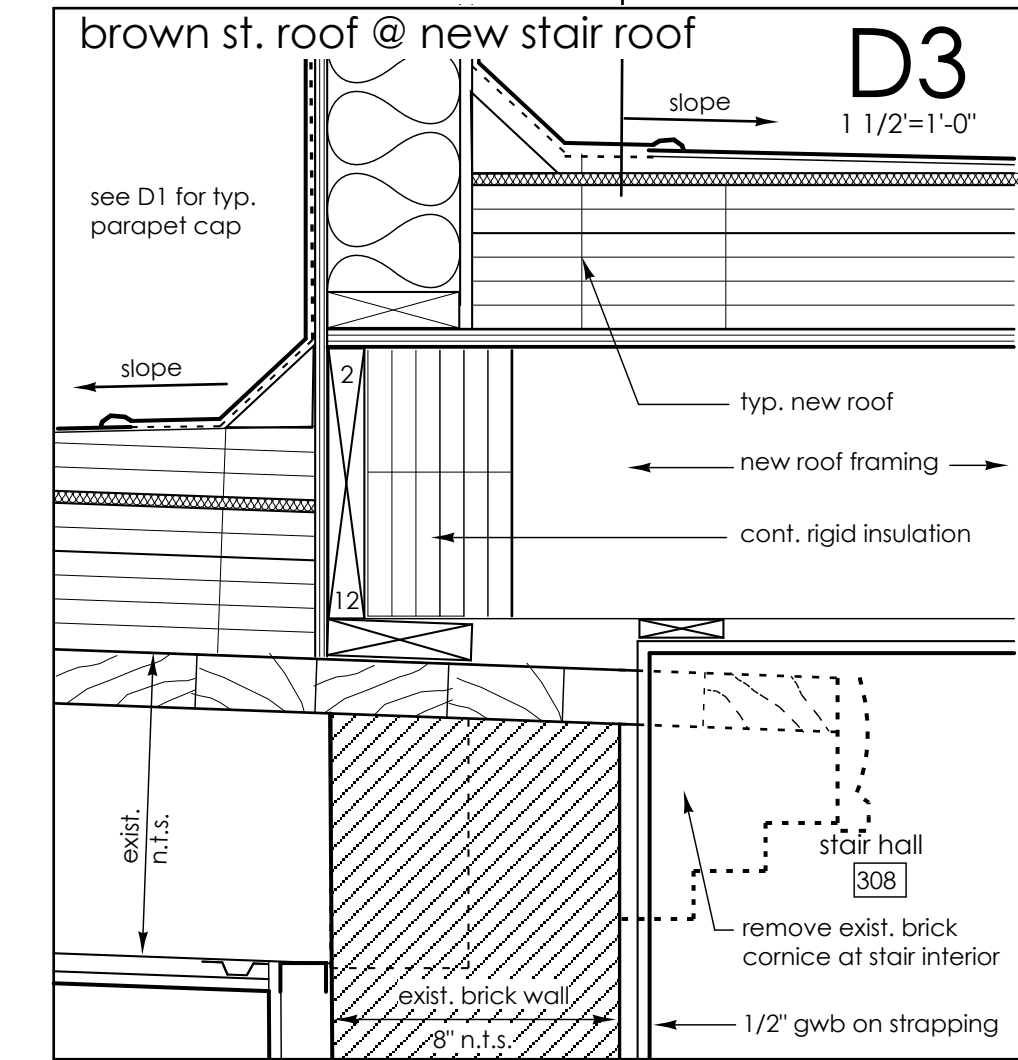
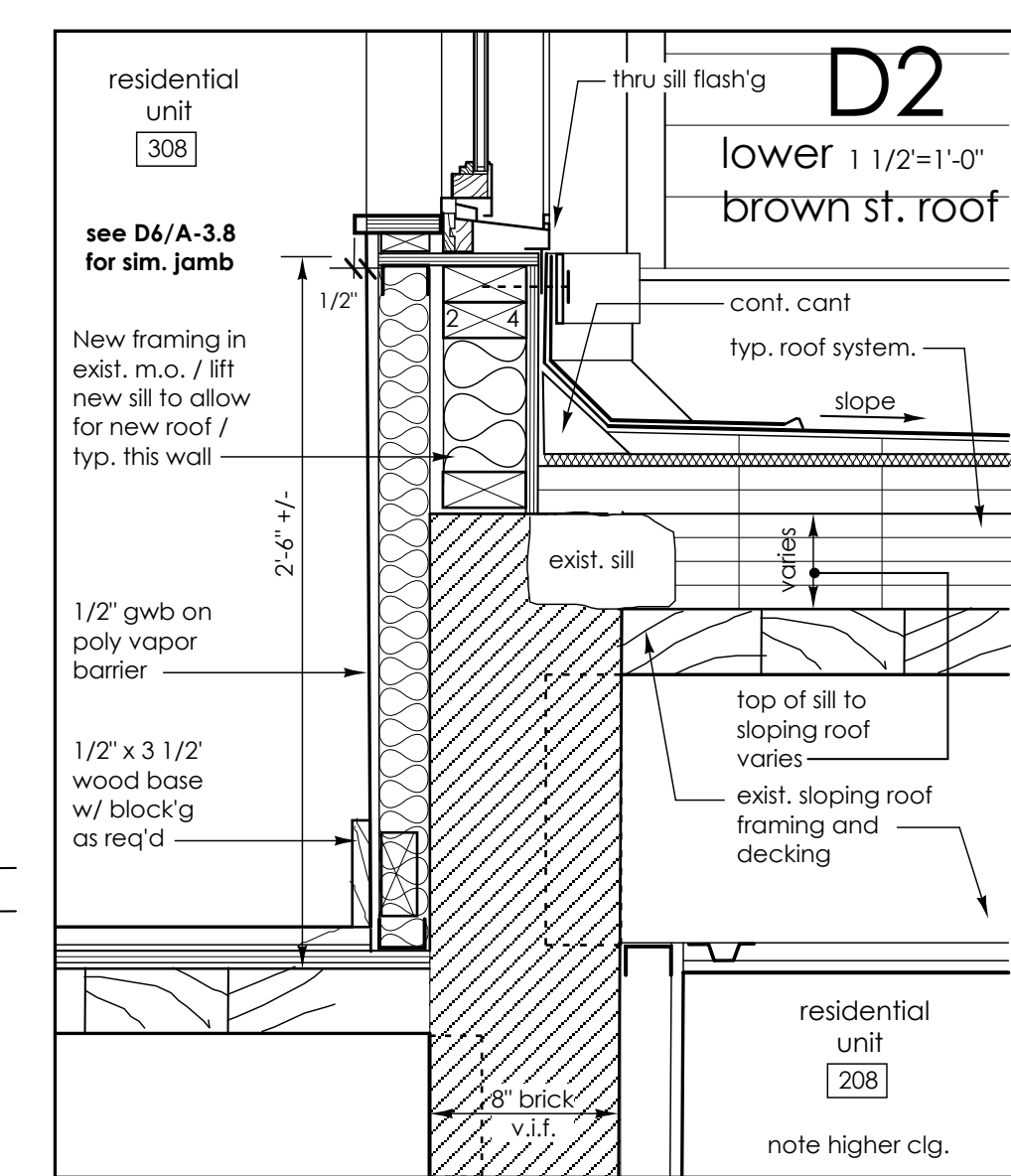
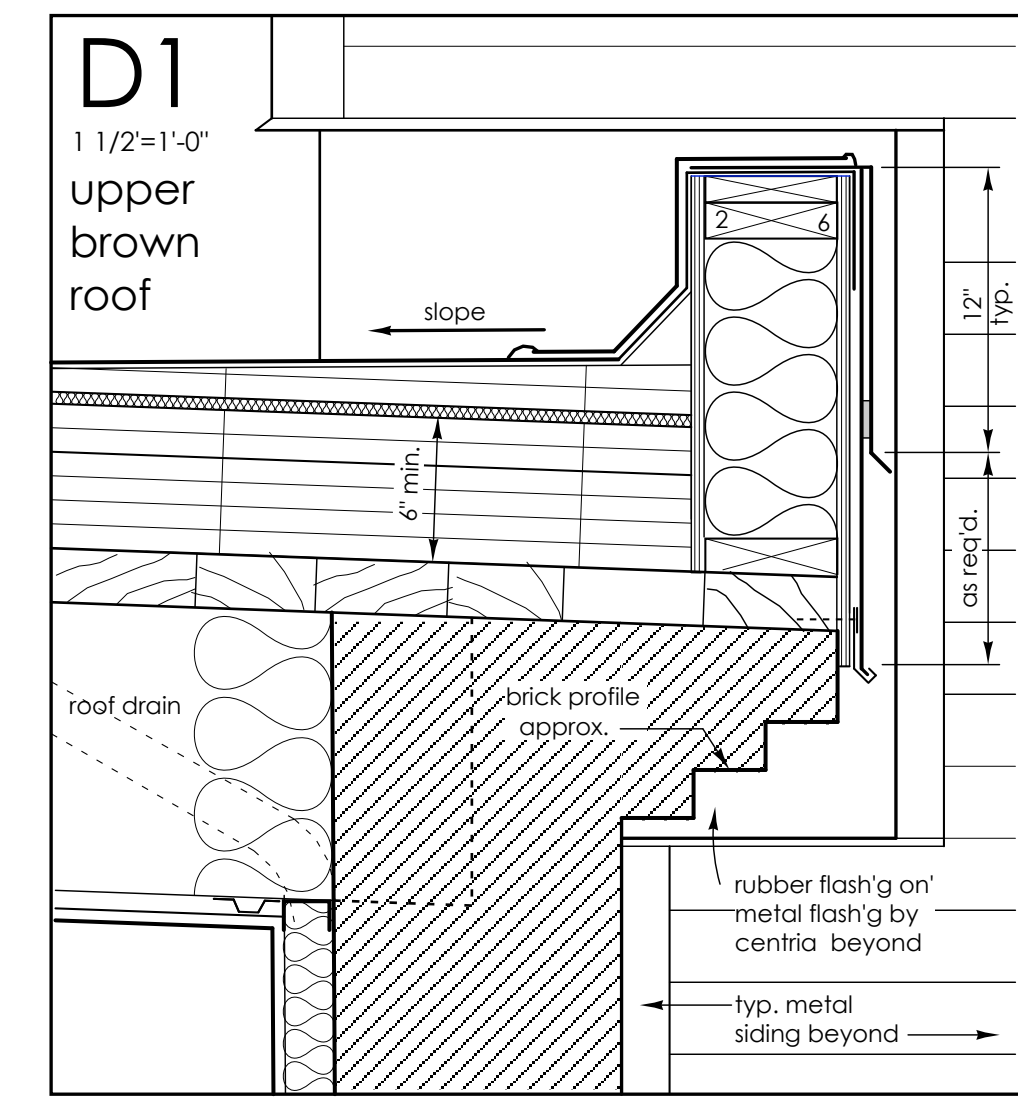
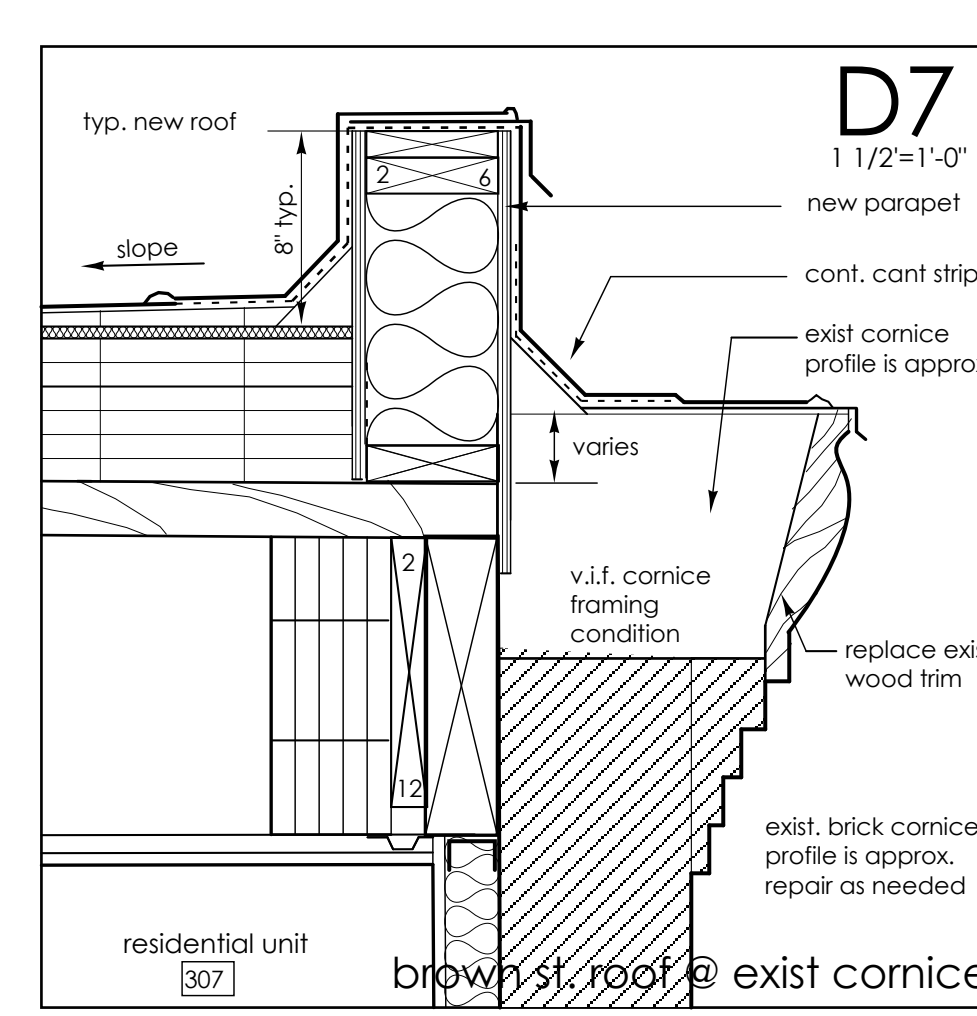
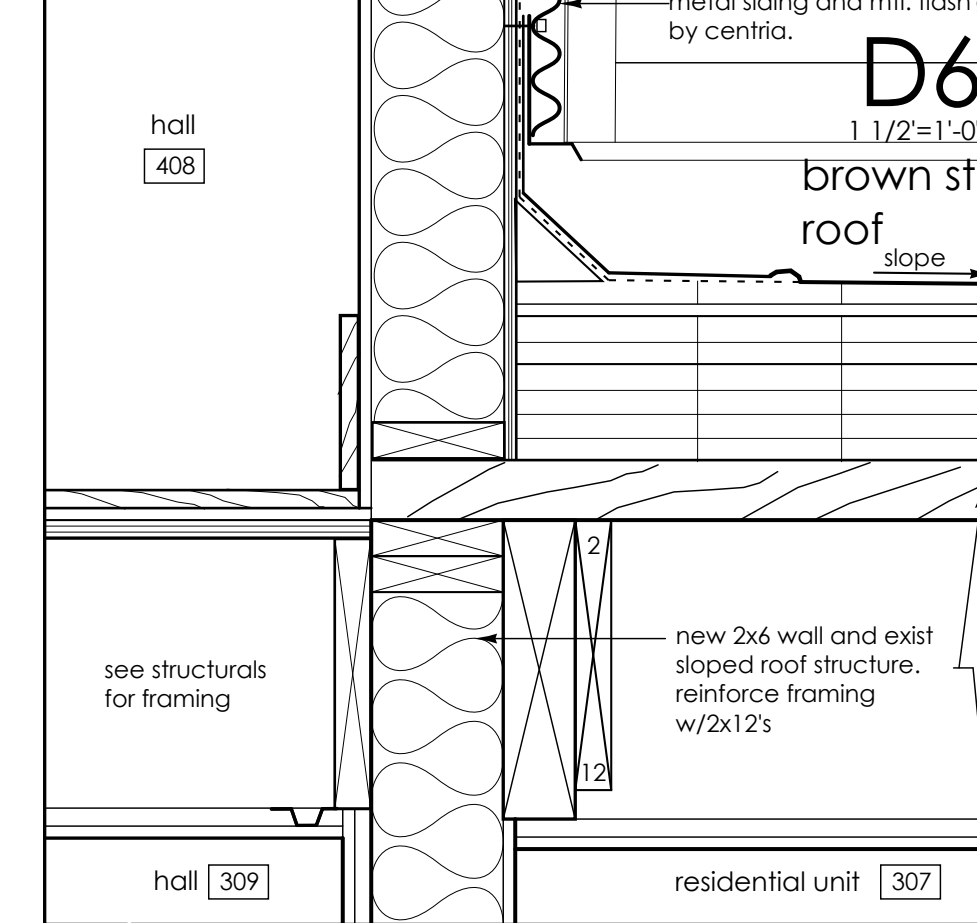
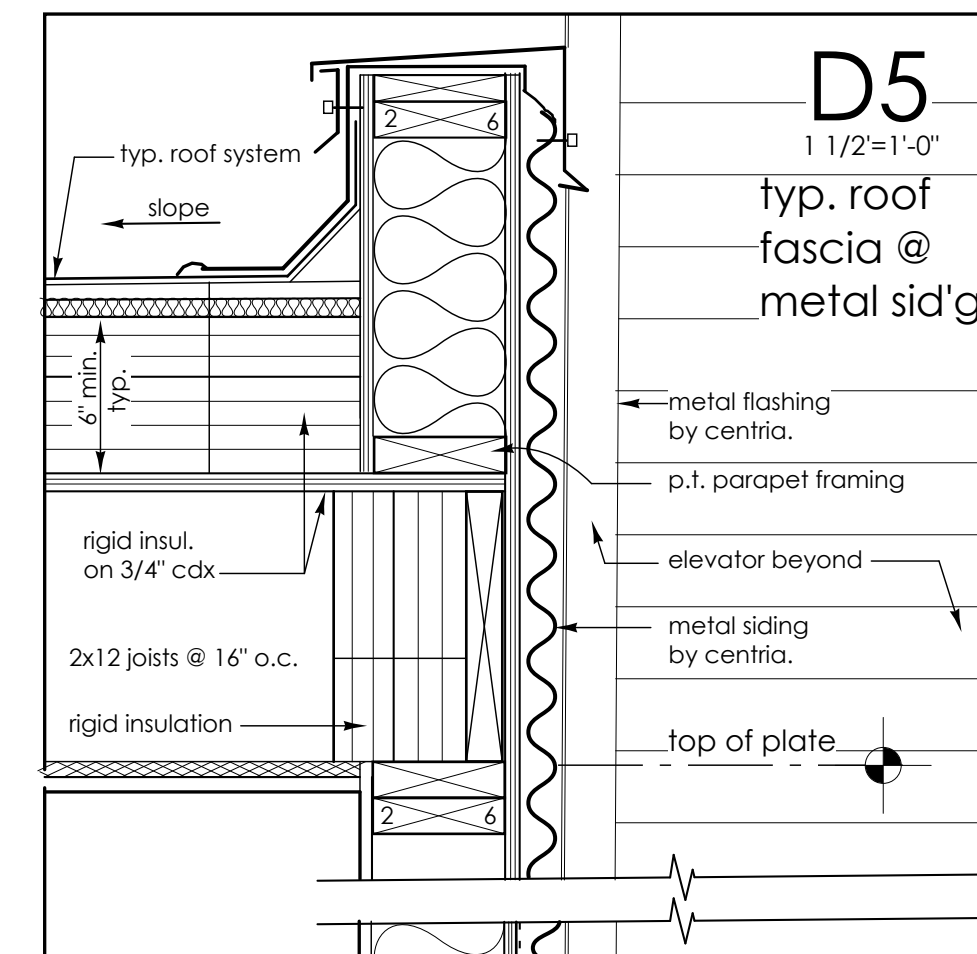
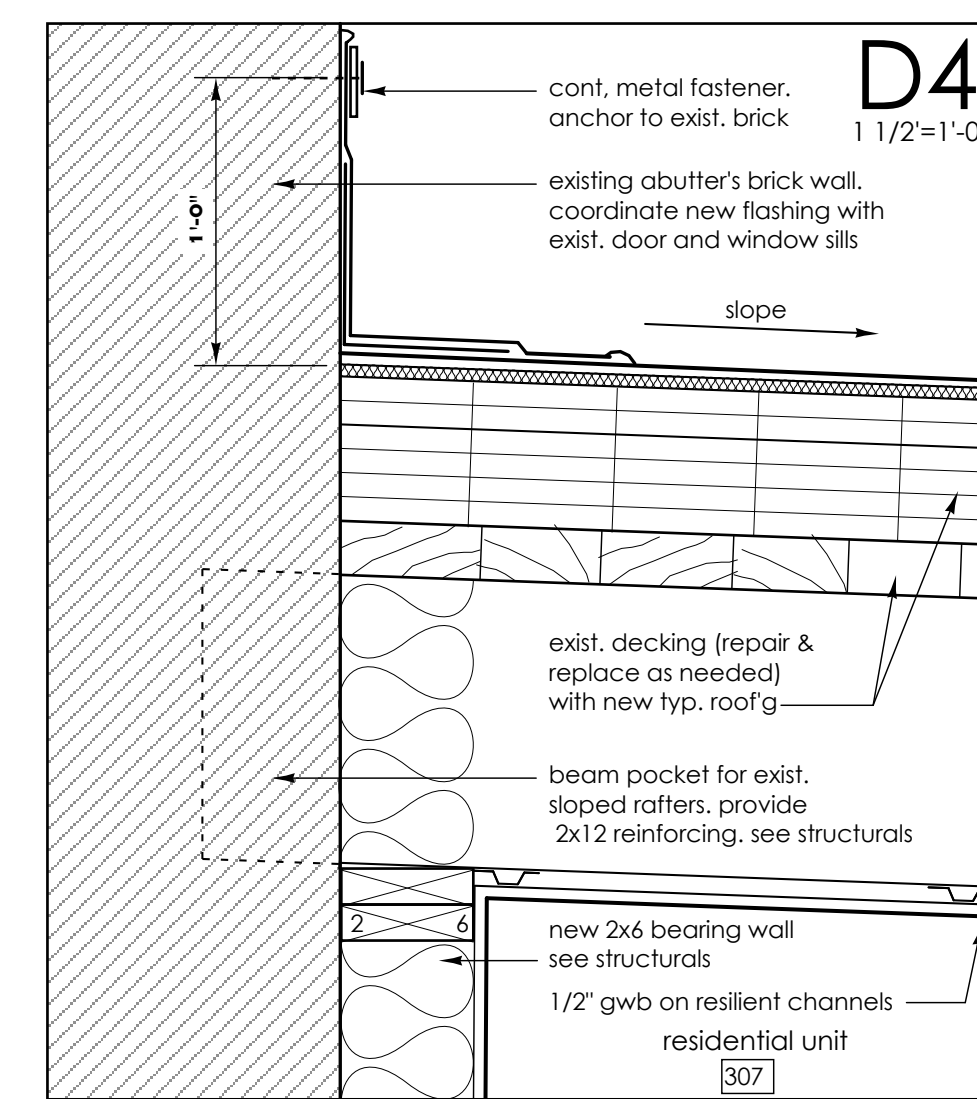
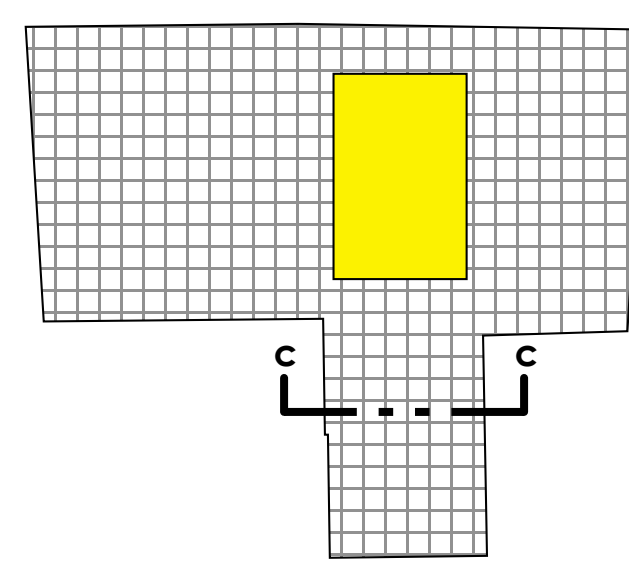


**Building Section @ Brown Street**

1/4" = 1'-0"  
 See A-1.7.1 for roof plan  
 See A-2.1 for building elevation  
 See A-3.5 for stair section



490 Congress Street  
 Portland, Maine  
 Kimball Building, LLC  
 Portland, Maine  
 James Sterling AIA  
 Architect  
 142 High Street  
 Portland, Maine  
 SECTION C - C and  
 ROOF DETAILS  
 scale: as noted  
 date: 20 May, 2005