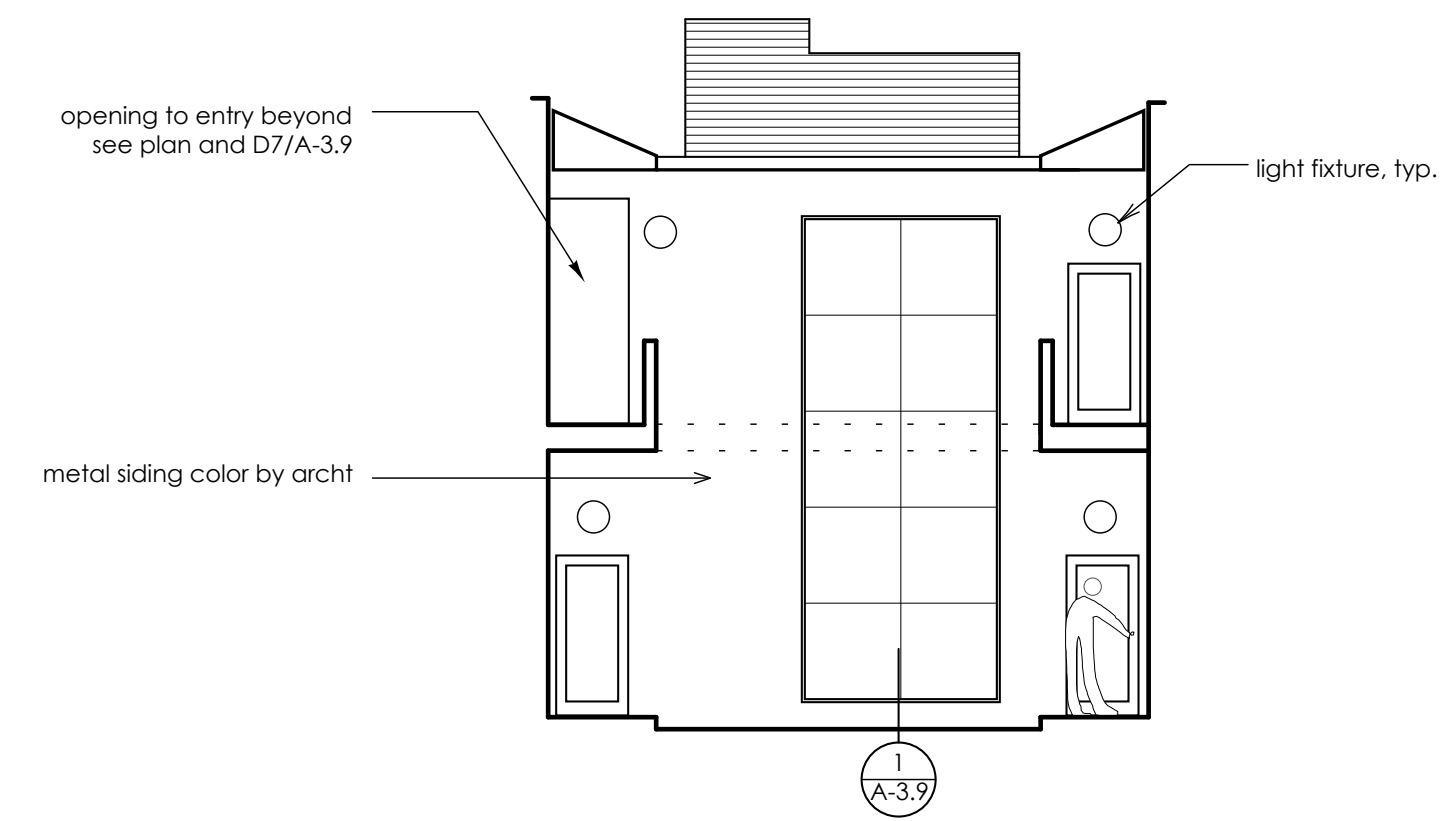
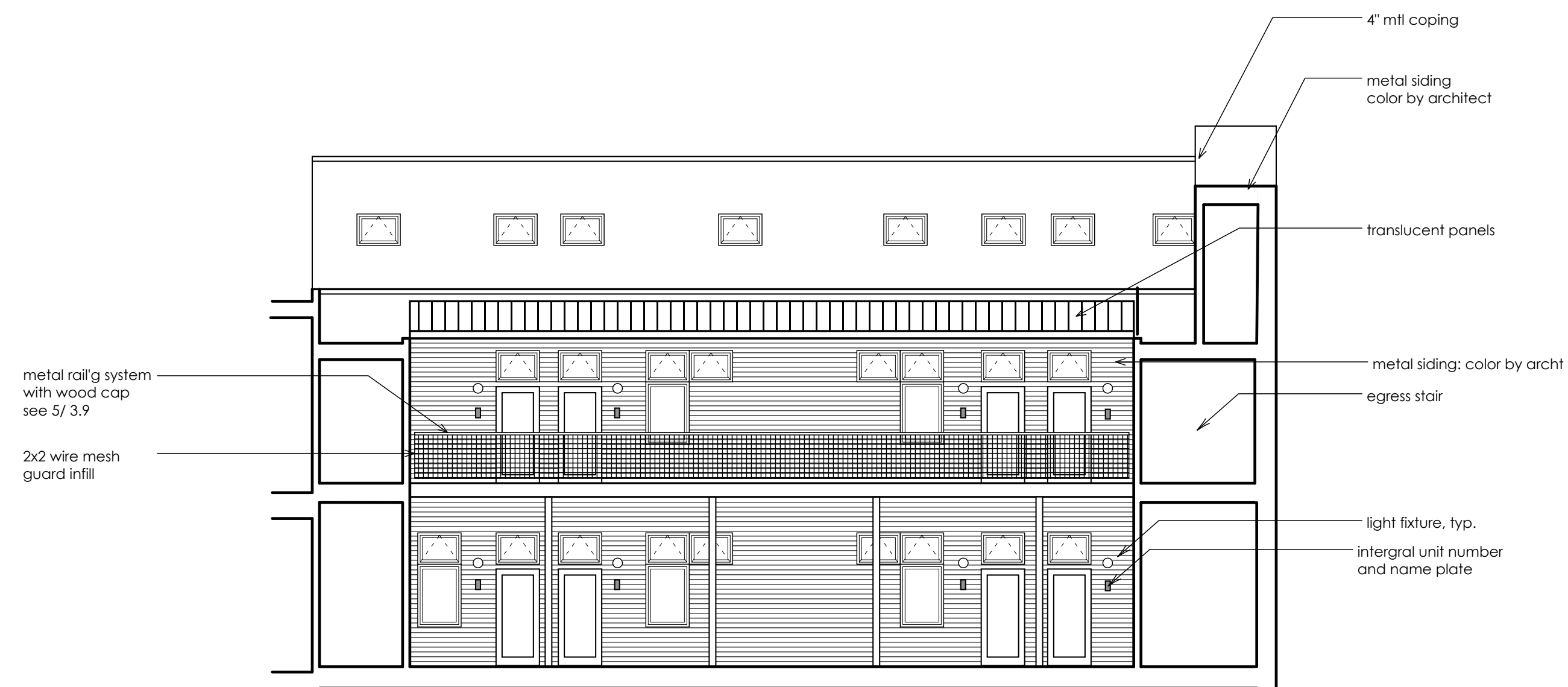




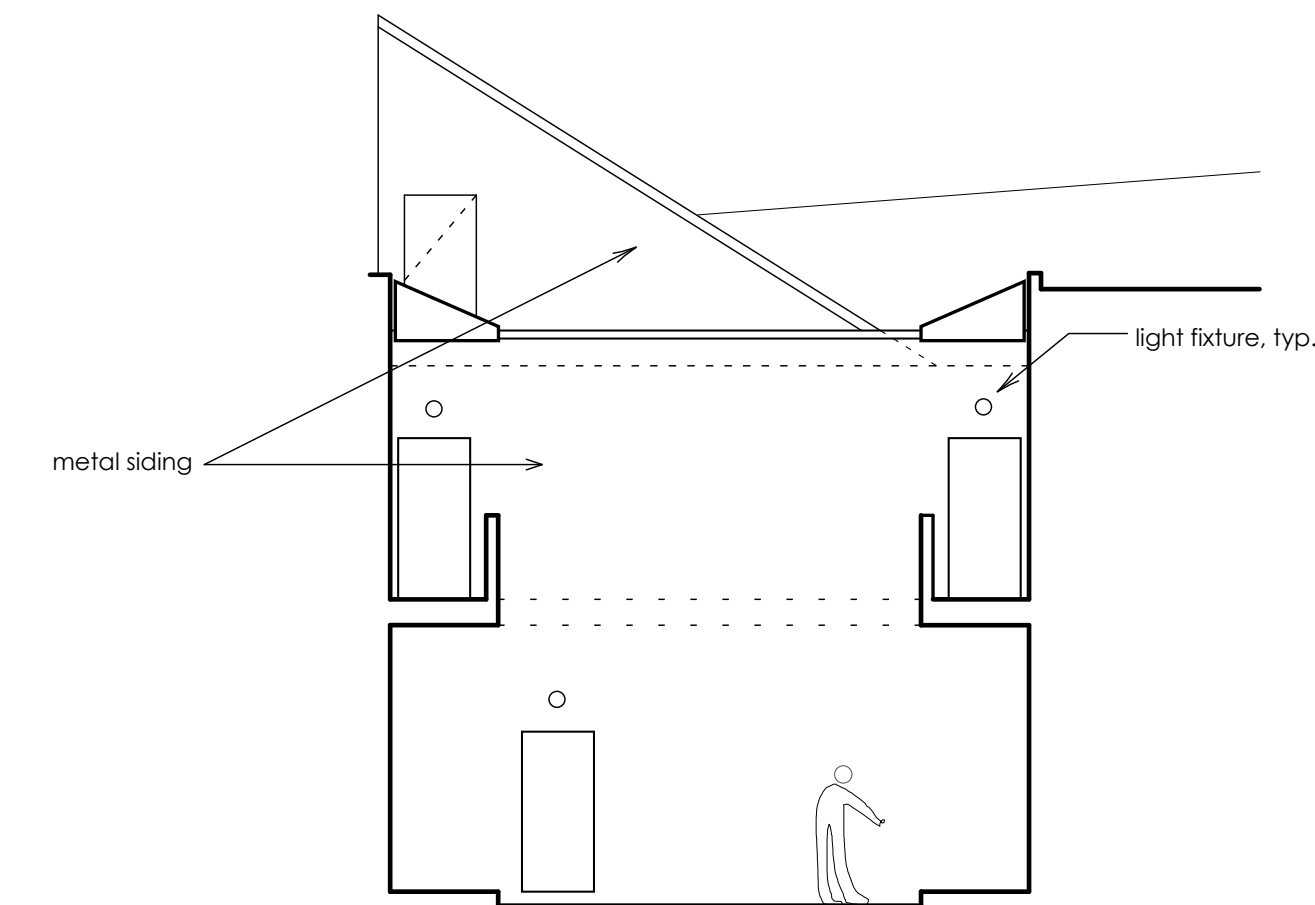
north elevation (see A3.9 for guards and rails)



west elevation



south elevation (see A3.9)



east elevation (see A3.8)

490 Congress Street  
Portland, Maine  
Kimball Building, LLC  
Portland, Maine  
James Sterling AIA  
Architect  
142 High Street  
Portland, Maine

COURTYARD ELEVATIONS

scale: 1/8" = 1'-0"  
date: 20 May 2005

A-2.2