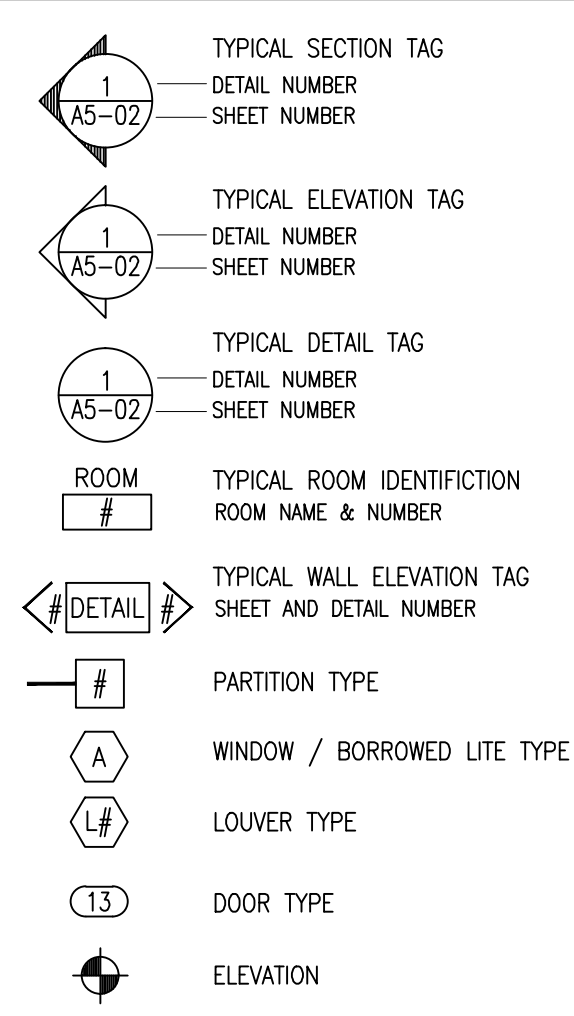


ABBREVIATIONS			
AB	ANCHOR BOLT	FEC	FIRE EXTINGUISHER CABINET
ACT	ACOUSTICAL TILE	FIN	FINISH
ADD'L	ADDITIONAL	FL	FLOOR
ADMIN	ADMINISTRATION	FT	FOOT
AFF	ABOVE FINISHED FLOOR	FTG	FOOTING
ALT	ALTERNATE	CA	GAUGE
ALUM	ALUMINUM	GC	GENERAL CONTRACTOR
AP	ACCESS PANEL	GL	GLASS
APV	ASPHALT PAVER	GWB	GYP SUM WALL BOARD
ARCH	ARCHITECT	GYP	GYP SUM
BD	BOARD	HD	HIGH DENSITY
BIT	BITUMINOUS	HR	HOUR
BLDG	BUILDING	HC	HOLLOW CORE
BLKG	BLOCKING	HDWR	HARDWARE
BM	BENCH MARK	HFS	HALF FULL SCALE
BRG	BEARING	H, HGT	HEIGHT
BSMT	BASEMENT	HM	HOLLOW METAL
BTW	BETWEEN	HOR	HORIZONTAL
CAB	CABINET	HTG	HEATING
CB	CATCH BASIN	HVAC	HEATING/VENTILATION/AIR CONDITIONING
CEM	CEMENT	HW	HOT WATER
CER	CERAMIC	HYD	HYDRANT
CF	CUBIC FEET	INCL	INCLUDE (D); INCLUDING
CJ	CONTROL JOINT	ID	INSIDE DIAMETER
CL	CLOSET	IN	INCH
CLG	CEILING	INSL	INSULATE (D); INSULATION
CMU	CONCRETE MASONRY UNIT	INT	INTERIOR
CO	CLEANOUT	INV	INVERT
COL	COLUMN	JAN	JANITOR
CONC	CONCRETE	JT	JOINT
CONST	CONSTRUCTION	K, KITCH	KITCHEN
CONT	CONTINUE, CONTINUOUS	LAM	LAMINATED
CORR	CORRUGATED	LAV	LAVATORY
COORD.	COORDINATE	LCC	LEAD-COATED COPPER
CRS	COURSE (S)	LF	LINEAR FOOT
CT	CERAMIC TILE	LGT	LIGHT
CTV	CABLE TELEVISION LINE	LIN	LINEN
CUH	CABINET UNIT LEADER	MAT'L	MATERIAL
CW	COLD WATER	MAS	MASONRY
CY	CUBIC YARD	MAX	MAXIMUM
D	DRYER	WC	MASONRY COURSE
DBL	DOUBLE	MECH	MECHANICAL
DEFL	DEFLECTION	MFR	MANUFACTURER
DF	DIAMETER	MGR	MANAGER
DIA	DIAGONAL	MH	MANHOLE
DIM	DIMENSION	MIN	MINIMUM
DIR	DIRECTOR	MISC	MISCELLANEOUS
DIV	DIVISION	MO	MASONRY OPENING
DN	DOWN	MR	MOISTURE RESISTANT
DWG	DRAWING	MTD	MOUNTED
E	EAST	MTG	MOUNTING
EA	EACH	MTL	METAL
EF	EXHAUST FAN	N	NORTH
EJ	EXPANSION JOINT	NAT'L	NATURAL
EL	ELEVATION	NIC	NOT IN CONTRACT
ELEV	ELEVATOR	NL	NIGHT LIGHT
ELEC	ELECTRIC (AL)	NO	NUMBER
EQ	EQUAL	NOUR	NOURISHMENT
EWC	ELECTRIC WATER COOLER	NTS	NOT TO SCALE
EXAM	EXAMINATION	OA	OVERALL
EX, EXIST	EXISTING	OC	ON CENTER
EXP	EXPANSION	OD	OUTSIDE DIAMETER
EXT	EXTERIOR	OH	OPPOSITE HAND
FV	FIELD VERIFY	OT	QUARRY TILE
FAP	FIRE ALARM PULL STATION	R	RADIUS; RISER; RANGE
FBO	FURNISHED BY OTHERS	RD	ROOF DRAIN
FCO	FLOOR CLEAN OUT	REC	RECREATION
FD	FLOOR DRAIN	RECT	RECTANGULAR
FDN	FOUNDATION	REF	REFERENCE; REFER
		REQ'D	REQUIRED
		REFR	REFRIGERATOR
		REINF	REINFORCING
		RESIL	RESILIENT
		REV	REVISED; REVISION
		RFS	ROOFING
		RM	ROOM
		RO	ROUGH OPENING
		S	SOUTH; SINK
		SAN	SANITARY
		SC	SOLID CORE
		SD	STORM DRAIN
		SECT	SECTION
		SF	SQUARE FOOT
		SHT	SHEET
		SIM	SIMILAR
		SPEC	SPECIFICATION (S)
		STC	SOUND TRANSMISSION COEFFICIENT
		STD	STANDARD
		STL	STEEL
		STOR	STORAGE
		SUSP	SUSPENDED
		T	TREAD
		TEL	TELEPHONE
		TEL-P	PAY TELEPHONE
		TEMP	TEMPERATURE; TEMPERED
		T&G	TONGUE AND GROOVE
		TH	THICKNESS
		TOP	TOP OF
		TV	TELEVISION
		TYP	TYPICAL
		UL	UNDERWRITERS LABORATORIES
		UTIL	UTILITY
		VB	VAPOR BARRIER
		VCT	VINYL COMPOSITION TILE
		VENT	VENTILATOR
		VERT	VERTICAL
		VEST	VESTIBULE
		VR	VAPOR RETARDER
		W	WEST; WATER; WASHER; WIDTH
		W/W	WITH
		W/D	WASHER DRYER
		WC	WATER CLOSET
		WD	WOOD
		W/O	WITHOUT
		WWM	WELDED WIRE MESH
		XEPS	EXTRUDED POLYSTYRENE

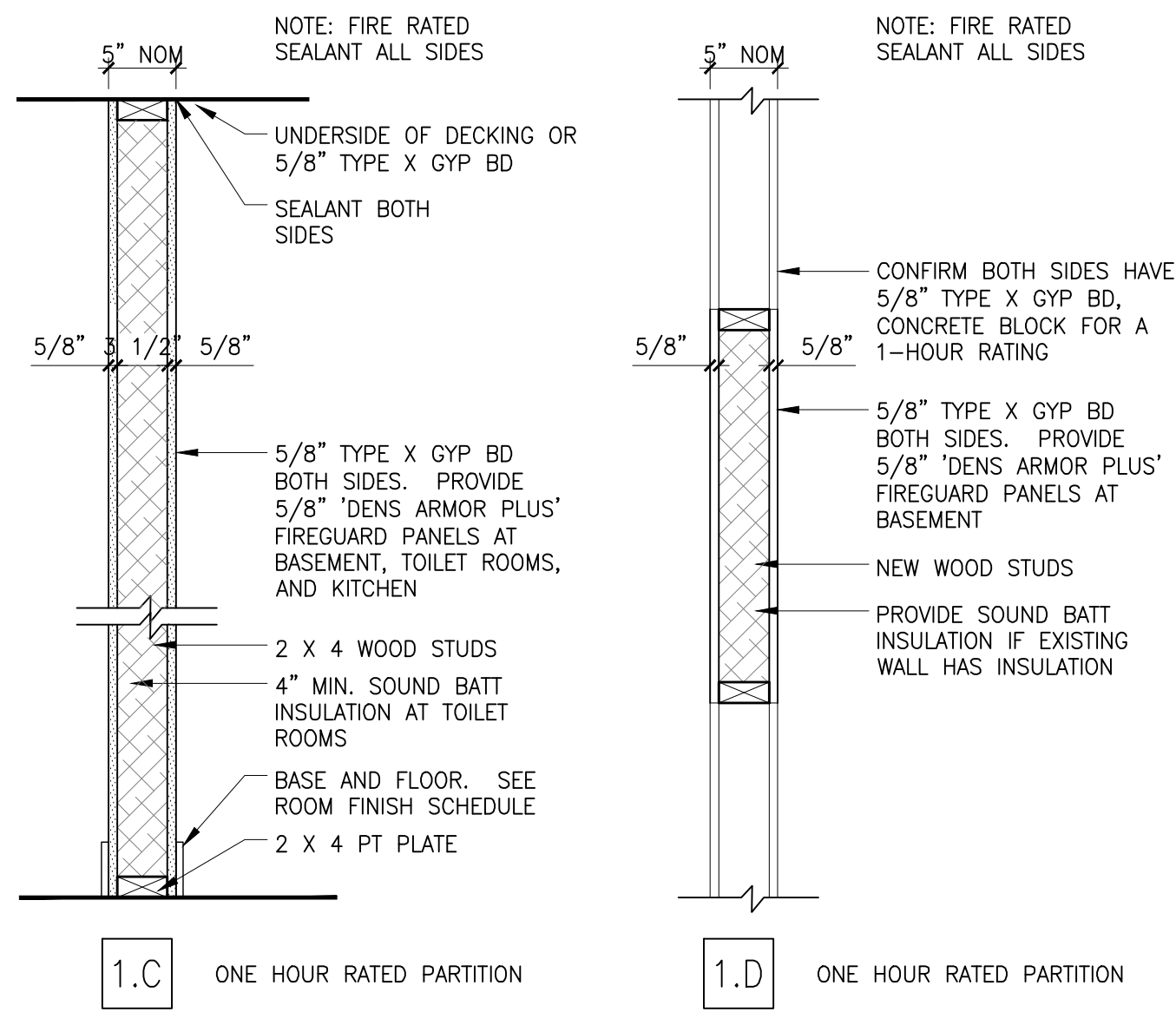
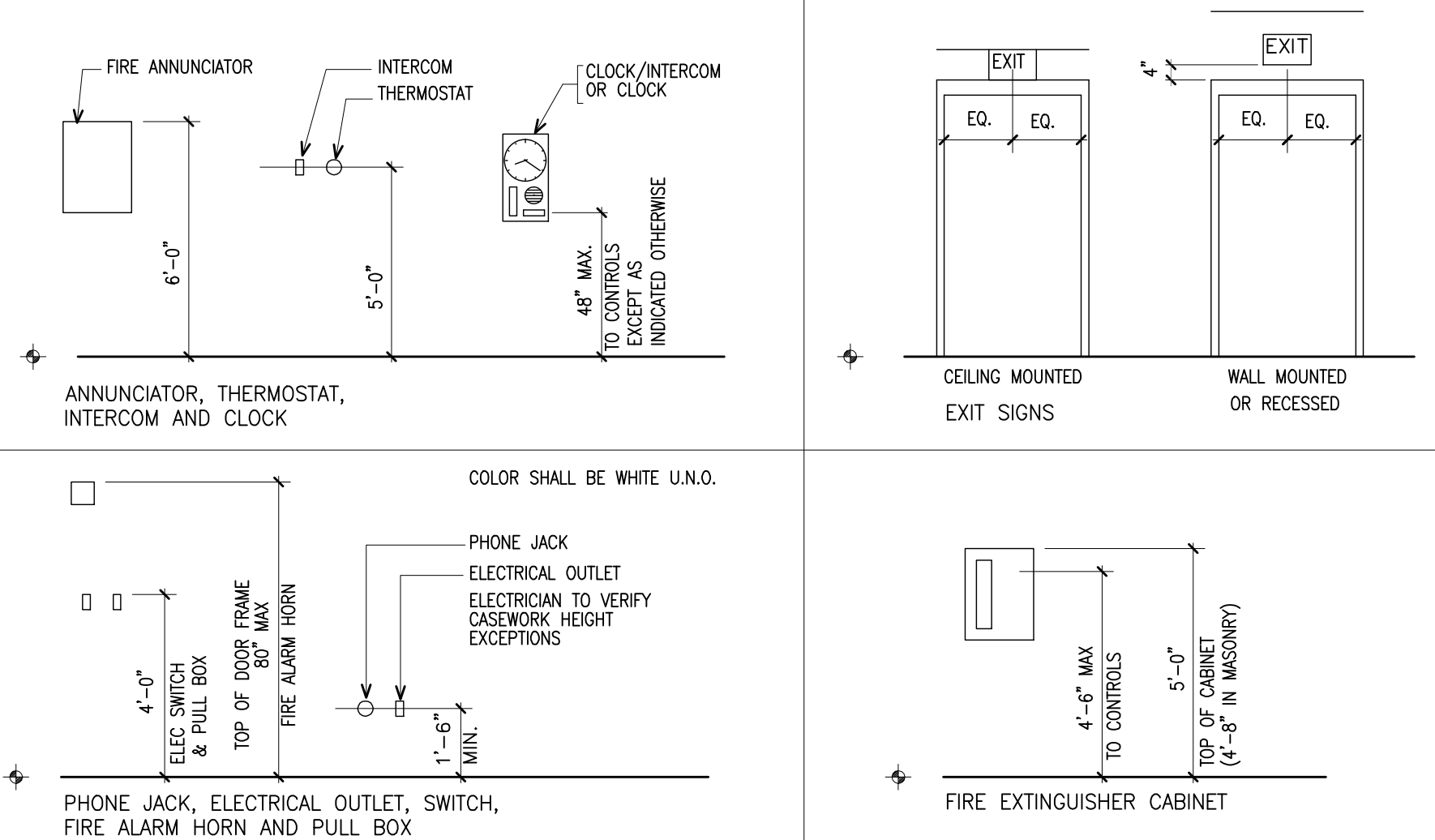
GENERAL NOTES

- General contractor shall verify all dimensions and report any discrepancies to the architect before proceeding with work. Do not scale drawings, work from dimensions only.
- Provide appropriate reinforcing within partitions for support of all grab bars, shelving brackets, cabinets, door frames, water coolers, cubbies, fire extinguishers, lighting, and other wall mounted equipment or appliances indicated in documents.
- All doors shall be located a minimum of 4" (wall to frame) off adjoining stud walls, except where noted or dimensioned otherwise.
- All handicapped toilet rooms, grab bars, and door openings shall meet the requirements of ANSI 117.1 latest edition, and the American Disability Act (ADA) for handicapped accessibility.
- All gypsum wall board within 3'-0" of plumbing fixtures shall be moisture resistant.
- All gypsum board in the basement shall be Dens Armour Plus, paperless gypsum board, NO EXCEPTIONS.
- Before penetrating or otherwise modifying joists, beams, or other structural members, consult with the Architect on maximum size and location of penetrations.
- Provide double studs at all door frames over 3'-0" wide.
- All materials in this building shall be new and not previously used, unless noted as "Existing to be relocated."
- All penetrations through rated walls and floor/ceiling assemblies shall be firestopped by specific subcontractor requiring penetration.

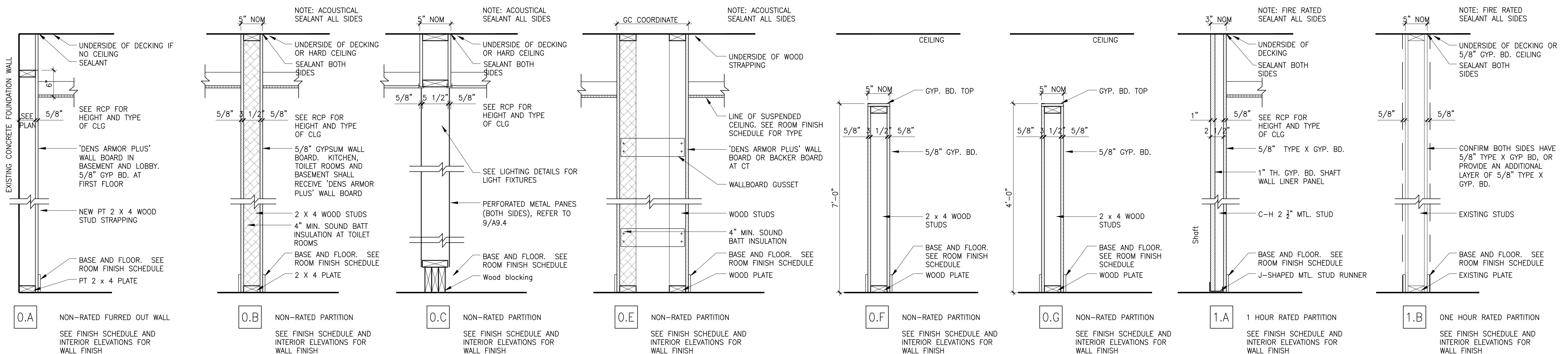
LEGEND SYMBOLS



STANDARD HEIGHTS AND CLEARANCES



ANSI/UL 305 (IBC ITEM # 14-15) - GYP. BD
ANSI/UL 305 - DENSARMOR FIREGUARD



ANSI/UL 263