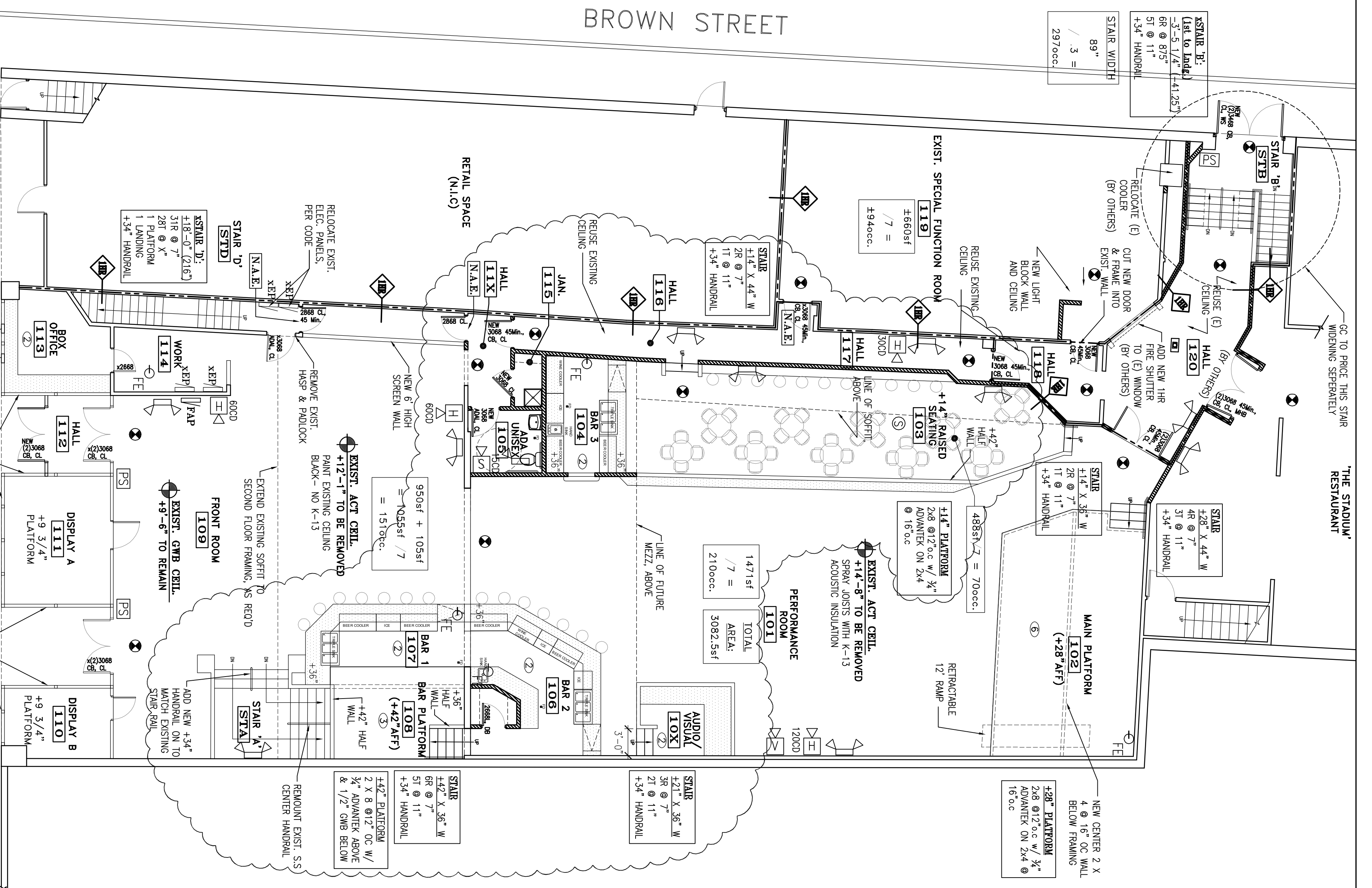


ISSUE DATE:	
PRELIM:	06-09-08
Board:	Not Rec'd
CDs:	8-15-08
REV. 1:	-
REV. 2:	-
PRINT:	9-24-08



**PAINT SCHEDULE**  
PAINT ALL FIRST FLOOR ROOMS EXCEPT NO. PAINT 119. TOUCH-UP 110, 111, 113, 114, 119.

**FLOORING SCHEDULE**  
EROGOL WOOD, 101, 109, 105, 106, 107, 112, 104, NO. FLOOR 102, 108, 514, 110, 111, 119.

LIFE SAFETY  
FIRST FLOOR PLAN  
SCALE: 1/8" = 1'-0"

**FIRST FLOOR EGRESS**

STAIR + BAND	18
BASEMENT	18
NO. FLOOR MAIN	210
FIRST FLOOR RIGHT	151
FIRST FLOOR RAMP	70
MEZZANINE (FUTURE)	(48)
MEZZANINE (FUTURE)	(48)
MEZZANINE (FUTURE)	84
SECOND FLOOR CONFERENCE	30
SUBTOTAL	37
SLEET + BAND	18
TOTAL	651

**TOTAL OCCUPANCY**

BASEMENT	175
NO. FLOOR MAIN	210
FIRST FLOOR RIGHT	151
FIRST FLOOR RAMP	70
MEZZANINE (FUTURE)	(48)
MEZZANINE (FUTURE)	(48)
MEZZANINE (FUTURE)	84
SECOND FLOOR CONFERENCE	30
SUBTOTAL	37
SLEET + BAND	18
TOTAL	651

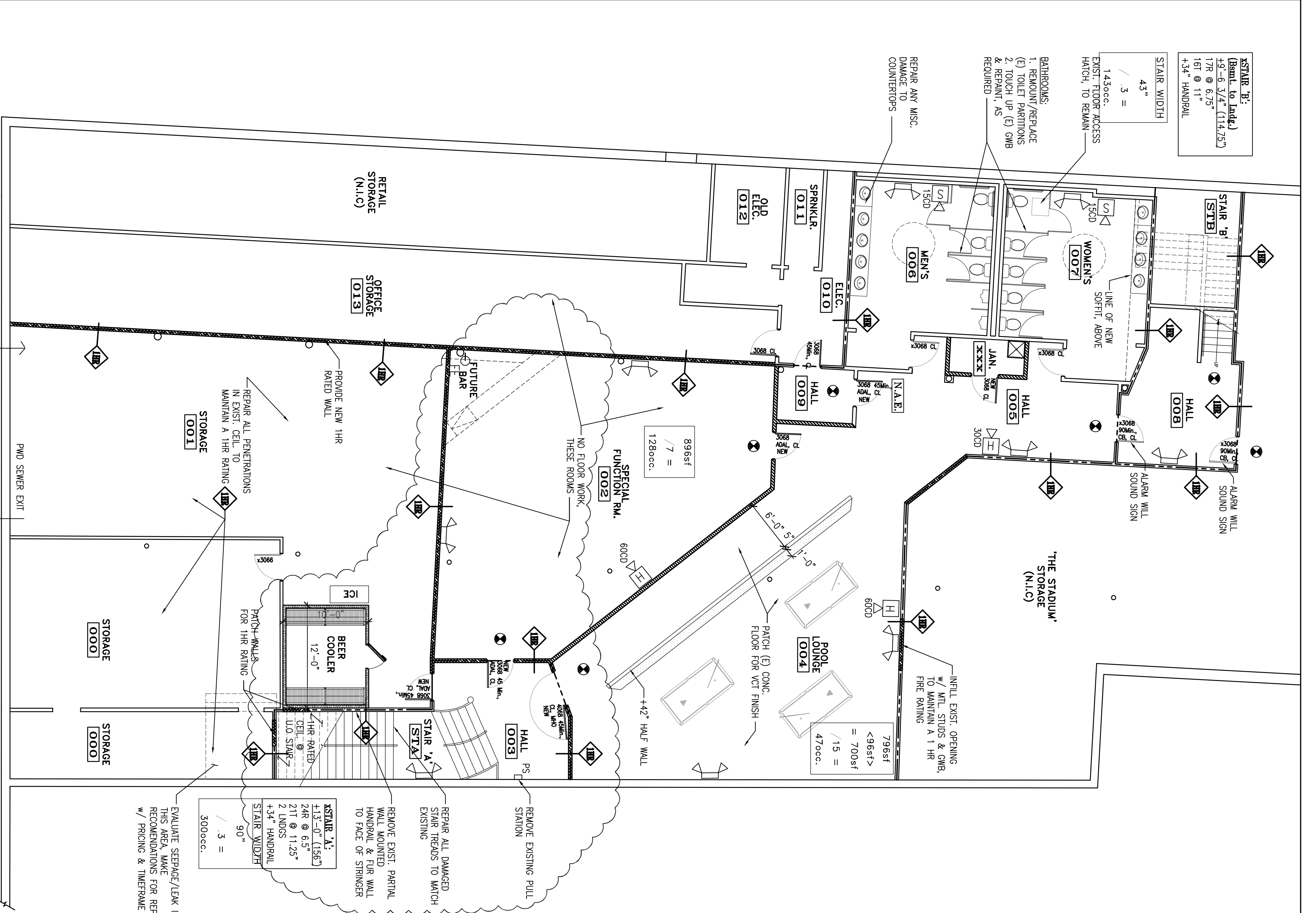
- NOTES:**
- ALL EMERGENCY LIGHTS MUST BE POWERED BY BATTERY BACK-UP OR GENERATOR PER NFPA 101.
  - HVAC PER NFPA 90A
  - EMERGENCY LIGHTS TO AVERAGE 1 FOOTCANDLE AND 1' FOOTCANDLE MINIMUM.
  - ALL FIRE WALL PENETRATIONS TO BE COMPLETELY SEALED TO MAINTAIN A 1 HR. RATING. - ALL DUCTWORK WHICH PENETRATES A FIRE WALL SHALL HAVE A 1 HR. DAMPER.
  - ALL DOORS TO BE 3'-0" x 6'-8" MTL. (U.O.N.) W/ METAL FRAME AND INSTALLED AS NOTED.
  - EXISTING BUILDING IS SPRINKLED. ADJUST ALL HEADS TO MATCH NEW CEILING HEIGHTS (PER NFPA 96)
  - PROVIDE VOICE EVACUATION SYSTEMS PER NFPA 72 (BELOW NEW BALCONY)
- ABBREVIATIONS:**
- C.O. = CASED OPENING W/ 1x3 FLAT CASING W/ EASED EDGES
  - CL = DOOR CLOSER
  - WS = WEATHER STRIPPING SYSTEM
  - DB = DEAD BOLT
  - AR = AUTO RELOCATED
  - R = RELOCATED
  - X = EXISTING TO REMAIN

- FIRE PROTECTION LEGEND**
- ☑ FIRE EXTINGUISHER 10# ABC
  - ☑ EXIT LIGHT
  - ☑ STROBE ONLY WITH CANDELLA RATING AS NOTED
  - ☑ HORN STROBE WITH CANDELLA RATING AS NOTED
  - ☑ DUAL EMERGENCY LIGHT
  - ☑ SINGLE EMERGENCY LIGHT
  - ☑ SMOKE DETECTOR (CEILING)
  - ☑ HEAT DETECTOR (CEILING)
  - ☑ COMBINATION LIGHT/EXHAUST FAN
  - ☑ FIRE ALARM MASTER CONTROL PANEL
  - ☑ PULL STATION
  - ☑ EXTERIOR EGRESS LIGHT
  - ☑ NOT AN EXIT SIGN W RAISED BRaille
  - ☑ VAN ACCESSIBLE
- NOTE:**  
STROBE DEVICE TO HAVE COMMUNICATION RATING MEETING NFPA 72 TABLE 6-4.1.(G), MOUNT AT +50" A.F.F., INCLUDE W/ VOICE EVACUATION SYSTEM.

LIFE SAFETY  
BASEMENT PLAN  
SCALE: 1/8" = 1'-0"

**PAINT SCHEDULE**  
PAINT 003, 004, 005, NO. PAINT 000, 001, 002, TOUCH-UP 006, 007, 008

**FLOORING SCHEDULE**  
PATCH, V.C.T., M.W. 003, 004, NO. FLOOR 000, 001, 002, CLEANING (FUTURE), CLEAN MTL. 005, 006, 008, 007, 008



LIFE SAFETY  
BASEMENT PLAN  
SCALE: 1/8" = 1'-0"