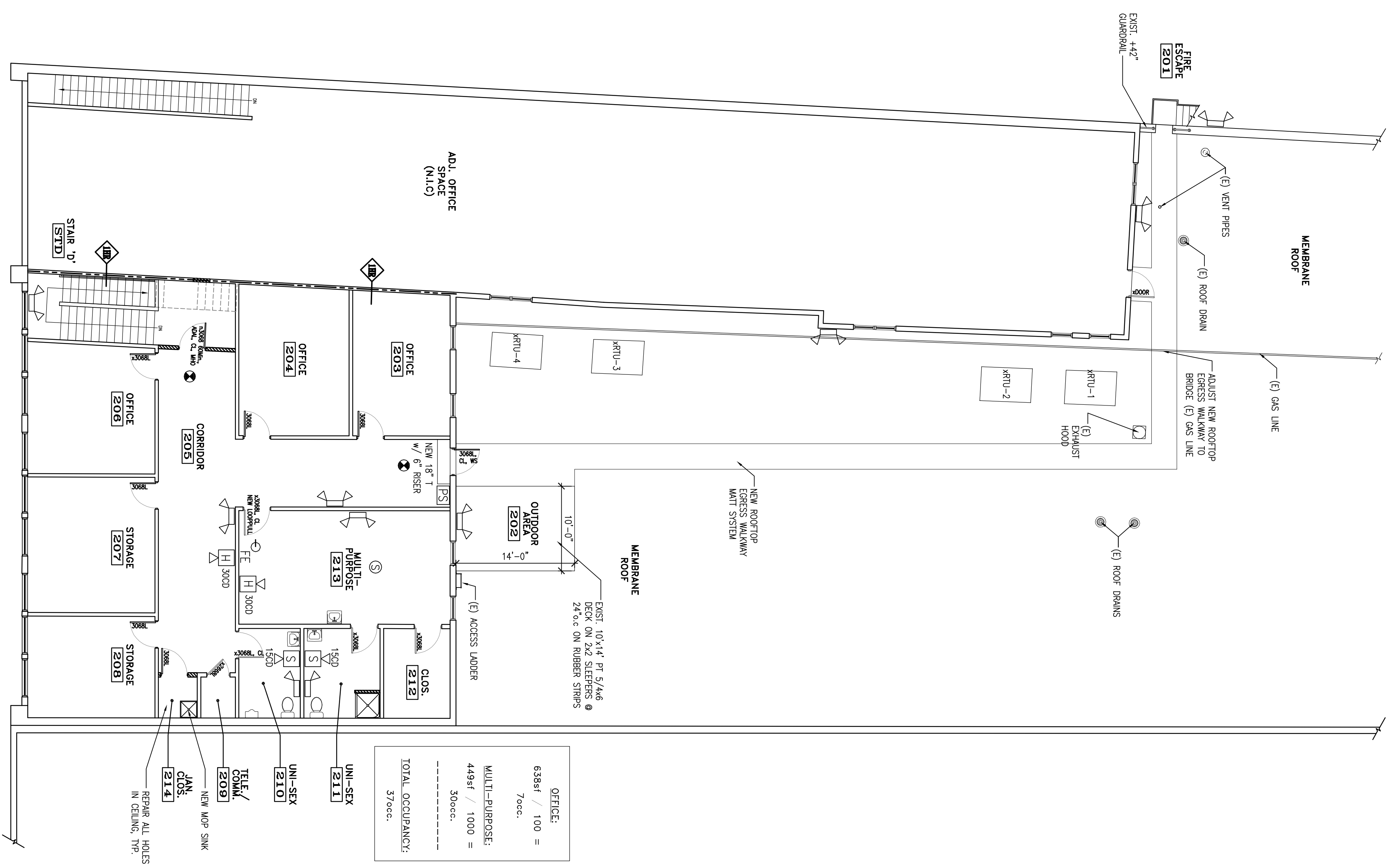


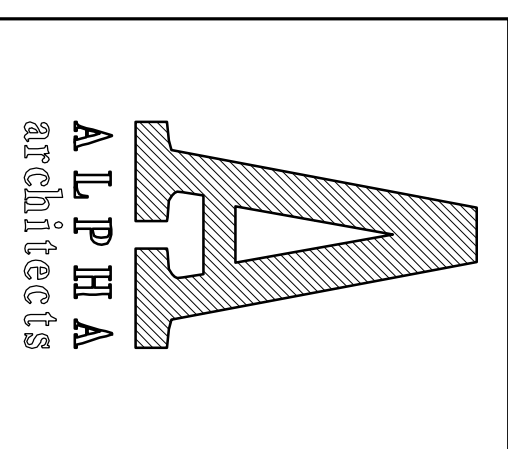
- NOTES:**
1. ALL EMERGENCY LIGHTS MUST BE POWERED BY BATTERY BACK-UP OR GENERATOR PER NFPA 101.
 2. HVAC PER NFPA 90A
 3. EMERGENCY LIGHTS TO AVERAGE 1 FOOTCANDLE AND 1 FOOTCANDLE MINIMUM.
 4. ALL FIRE WALL PENETRATIONS TO BE COMPLETELY SEALED TO MAINTAIN FIRE RATING. ALL DUCTWORK WHICH PENETRATES A FIRE WALL SHALL HAVE A 1 HR. DAMPER.
 5. ALL DOORS TO BE 3'-0" x 6'-8" MTL. (U.O.N) W/ METAL FRAME AND INSTALLED AS NOTED:
X = EXISTING DOOR TO REMAIN
L = LEVER ADA HANDLE
CB = CRASH BAR PANIC HARDWARE
CL = AUTOMATIC CLOSER
WS = WEATHER STRIP
 6. ALL HANDRAILS TO BE +34" A.F.F. W/ 1-1/2" DIA (& 1-1/2" FROM WALL IF APPLICABLE) W/ BALUSTERS LESS THAN 4" SPACE BETWEEN MAX. ON EA. SIDE OF ALL STAIRS AND RAMPS. EXTEND RAILS 12" BEYOND LIMITS OF RAMPS & TOP OF STAIRS & 23" BEYOND B.O. STAIRS; RETURN TO POST OR WALL, TYP.
 7. EXISTING BUILDING IS SPRINKLED. ADJUST ALL HEADS TO MATCH NEW CEILING HEIGHTS, PER NFPA 96.
 8. PROVIDE VOICE EVACUATION SYSTEMS PER NFPA 72.

- ABBREVIATIONS:**
- C.O = CASED OPENING W/ 1X3 FLAT CASING
 - CP = CASED PASSAGES
 - CL = DOOR CLOSER
 - WS = WEATHER STRIPPING SYSTEM
 - DB = DEAD BOLT
 - L = ADA LEVER
 - R = RELOCATED EXISTING TO REMAIN
 - X = EXISTING TO REMAIN

- FIRE PROTECTION LEGEND**
- ☉ FIRE EXTINGUISHER 10# ABC
 - ☼ EXIT LIGHT
 - ☼ STROBE ONLY WITH CANDELLA RATING AS NOTED
 - ☼ HOUR STROBE WITH CANDELLA RATING AS NOTED
 - ☼ DUAL EMERGENCY LIGHT
 - ☼ SINGLE EMERGENCY LIGHT
 - ☼ SMOKE DETECTOR (CEILING)
 - ☼ HEAT DETECTOR (CEILING)
 - ☼ COMBINATION LIGHT/EXHAUST FAN
 - ☼ FIRE ALARM MASTER CONTROL PANEL
 - ☼ PULL STATION
 - ☼ EXTERIOR EGRESS LIGHT
 - ☼ NOT AN EXIT SIGN W RAISED BRAILLE
 - ☼ VAN ACCESSIBLE
- NOTE:**
STROBE DEVICE TO HAVE COMMUNICATION RATING MEETING NFPA 72 TABLE 6-4.4.1.(G). MOUNT AT +80" A.F.F. INCLUDE W/ VOICE EVACUATION SYSTEM.



LIFE SAFETY
SECOND FLOOR PLAN
SCALE: 1/8" = 1'-0"
12-20-10



17 CHESTNUT STREET
PORTLAND, ME 04101
PHONE: 207.761.9500
FAX: 207.761.9595
design@alpharchitects.com

© COPYRIGHT
Reuse or reproduction of the contents of this document is not permitted without the permission of ALPHA ARCHITECTS



Port City Music Hall
Kitchen Addition
504 Congress Street
Portland, ME 04101

JOB: 10164

ISSUE DATE	ISSUE DATE
PRELIM.	12-01-10
PROJCD	-
CD'S	-
REV. 1	-
REV. 2	-
PRINT	12-20-10

LIFE SAFETY
MEZZANINE &
2ND FLOOR PLANS
LS-2