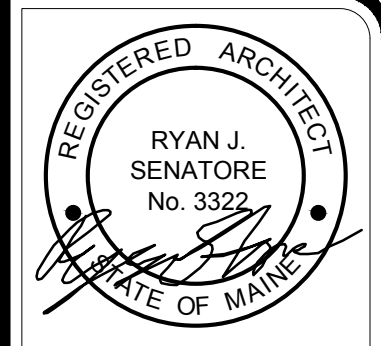


DEMOLITION NOTES

- 1.) ALL HAZARDOUS MATERIALS TO BE REMOVED AND DISPOSED OF IN ACCORDANCE WITH ALL FEDERAL, STATE AND LOCAL REGULATIONS.
- 2.) IF ANY ELEMENTS TO BE REMOVED ARE FOUND TO BE STRUCTURAL, THE G.C. SHALL NOTIFY THE ARCHITECT IN WRITING PRIOR TO REMOVING SUCH ELEMENTS
- 3.) REMOVAL ALL UNUSED PLUMBING, ELECTRICAL, AND MECHANICAL ELEMENTS THAT ARE NOT PROPOSED TO BE REUSED
- 4.) AT LOCATIONS OF FLOORINGS INDICATED TO BE REMOVED REMOVE ALL LAYERS OF FINISHED FLOORING UNDERLAYMENT AND ADHESIVES DOWN TO SLAB OR SHEATHING
- 5.) AT LOCATIONS OF CEILINGS INDICATED TO BE REMOVED REMOVE ALL CEILINGS, TILES, GRIDS AND STRAPPING TO JOISTS OR FRAMING AS WELL AS ANY IN CEILING ELEMENTS NOT SCHEDULE TO BE REUSED
- 6.) RELOCATE AND REINSTALL ANY AND ALL FUNCTIONING MECHANICAL, ELECTRICAL AND PLUMBING ELEMENTS LOCATED IN WALLS, FLOORS AND CEILINGS INDICATED TO BE REMOVED
- 7.) REMOVE ALL WALL COVERINGS ON WALLS INDICATED TO BE REMOVED, REPAINTED OR RE COVERED, PREPARE SURFACE FOR NEW MATERIALS: CERAMIC TILE, WALL COVERING, PAINT, ETC
- 8.) PATCH AND REPAIR ALL WALLS CEILINGS AND FLOORS AT LOCATIONS OF REMOVED INTERSECTING WALLS, REMOVED BUILT-INS, BENCHES, ETC.
- 9.) FOR DOOR REMOVAL AND REPLACEMENT INFORMATION SEE SHEET A1-10
- 10.) INSTALL NEW FIRE SPRINKLER HEADS WHERE EXISTING HEADS ARE REMOVE FOR WORK TO BE PERFORMED IN THE SURROUNDING AREAS



© 2014 RYAN SENATORE ARCHITECTURE

MEPS
510 CONGRESS STREET
PORTLAND, MAINE



RYAN SENATORE
ARCHITECTURE
565 CONGRESS STREET
SUITE 304
PORTLAND, MAINE 04101
207-650-6414
senatorearchitecture.com

CONSULTANTS:

REVISIONS:

DATE: OCTOBER 30, 2014

PROJECT No.

DRAWN BY: RRT / RJS

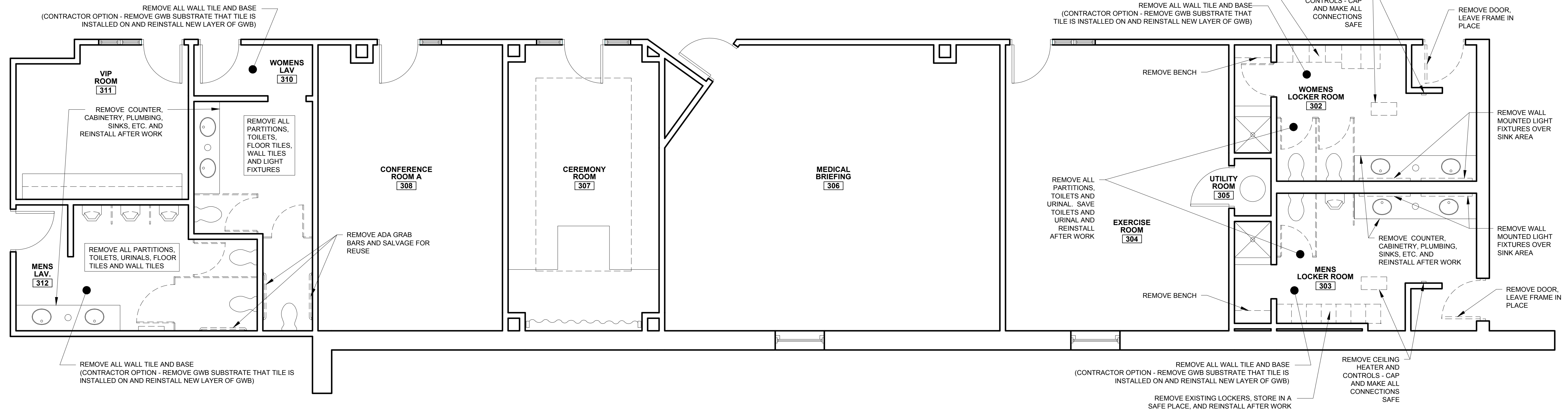
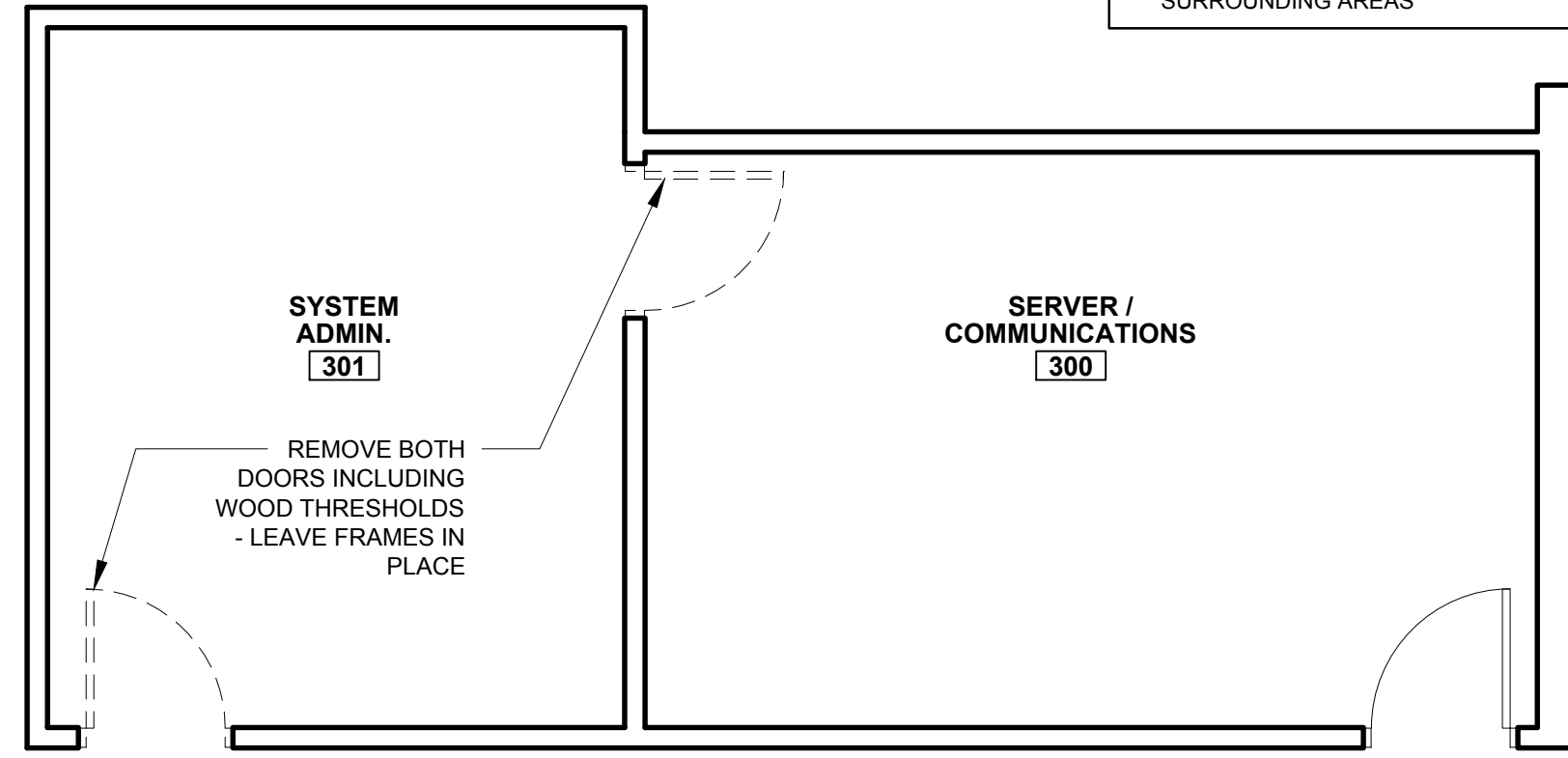
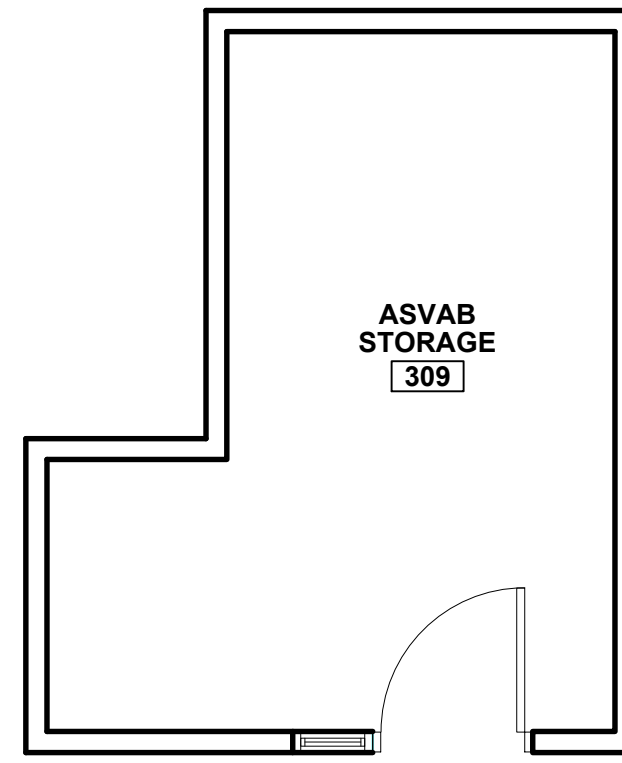
CHECKED BY: RJS

SCALE: AS NOTED

SHEET TITLE:

**OFFICE
COMPLEX
DEMO PLAN**

AD1-1



1 OFFICE COMPLEX DEMO PLAN
1/4" = 1'-0"