

© 2014 RYAN SENATORE ARCHITECTURE

MEPS
510 CONGRESS STREET
PORTLAND, MAINE



RYAN SENATORE
ARCHITECTURE
565 CONGRESS STREET
SUITE 304
PORTLAND, MAINE 04101
207.650.6414
senatorearchitecture.com

CONSULTANTS:

REVISIONS:

DATE: OCTOBER 30, 2014

PROJECT No.

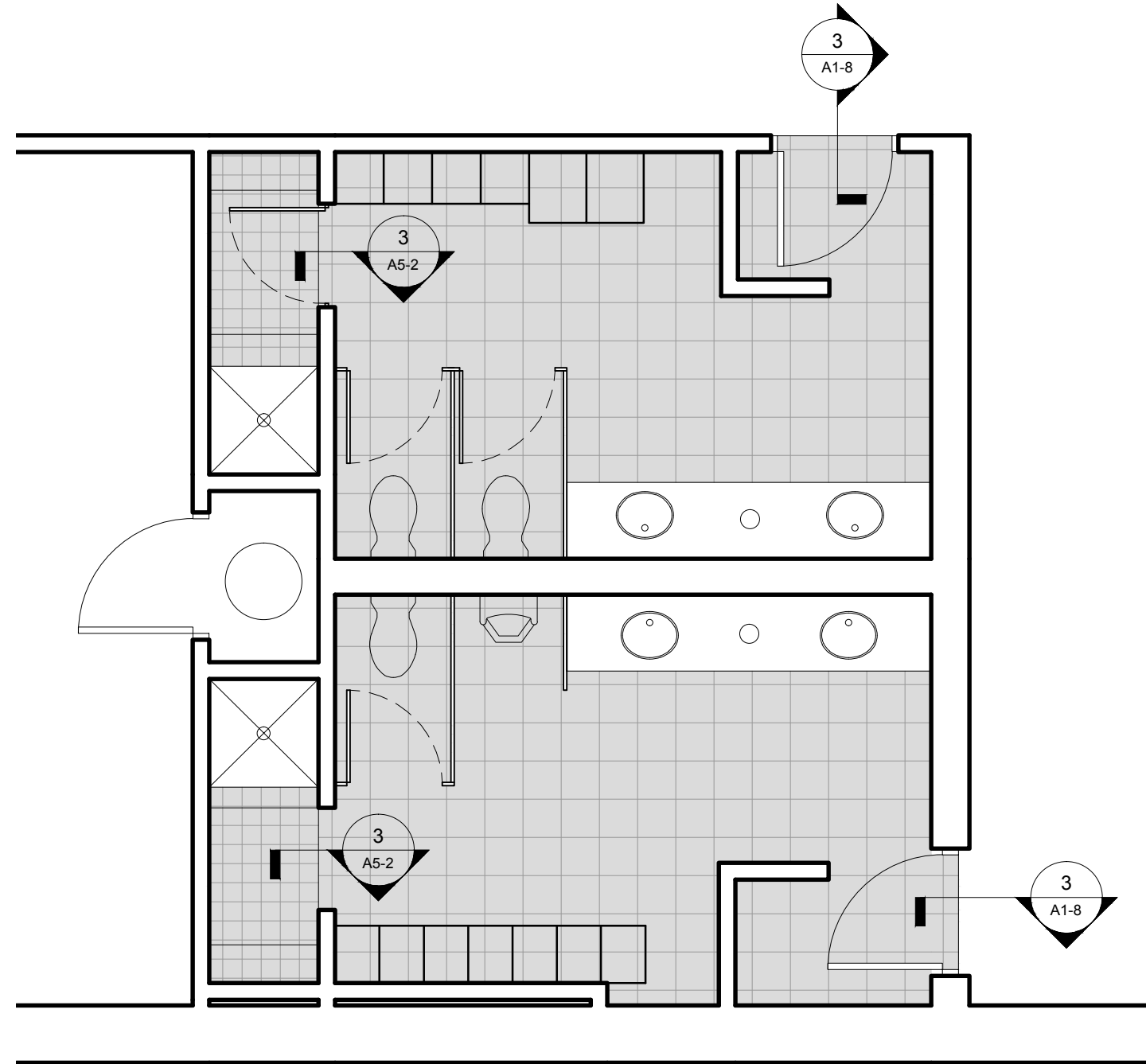
DRAWN BY: RRT / RJS

CHECKED BY: RJS

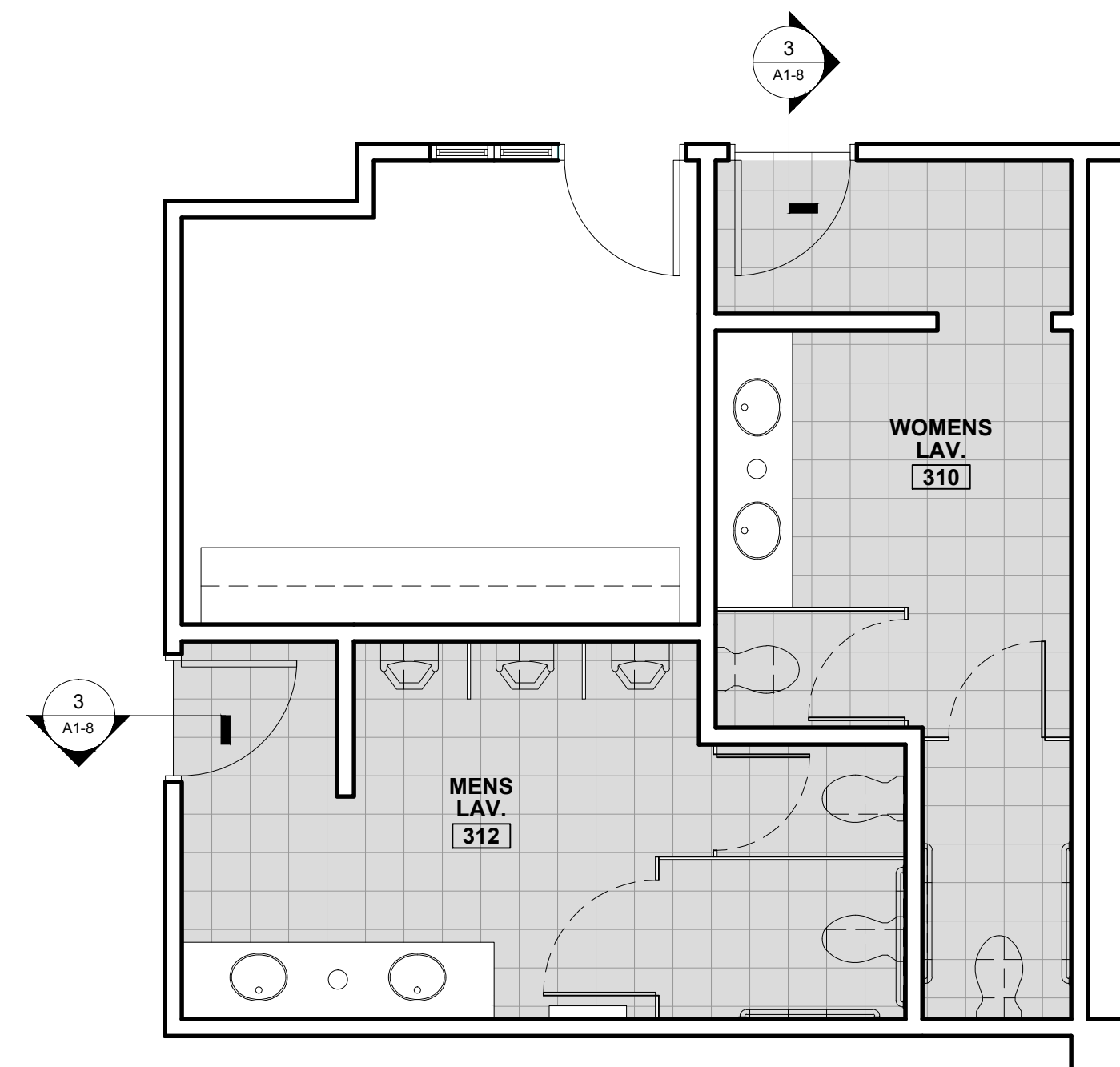
SCALE: AS NOTED

SHEET TITLE:
FLOORING LAYOUT PLAN

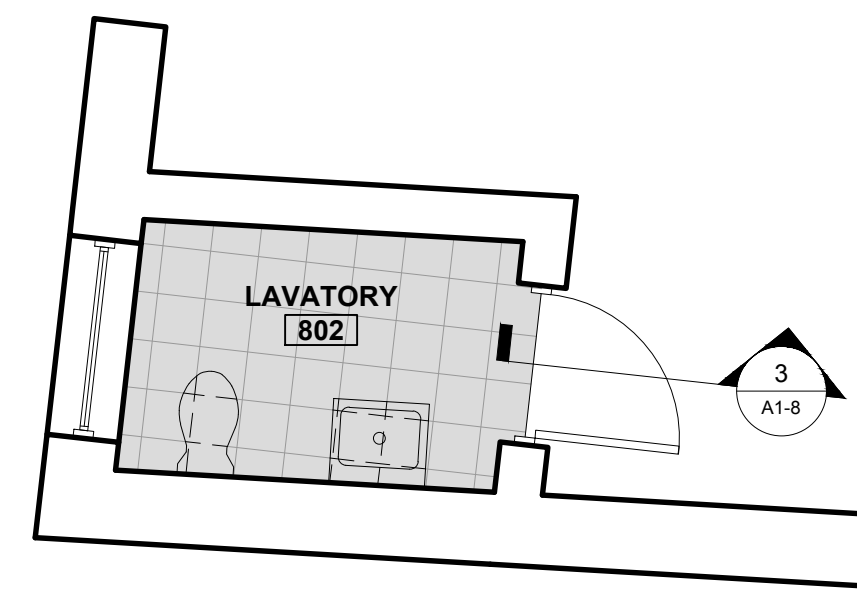
A1-7



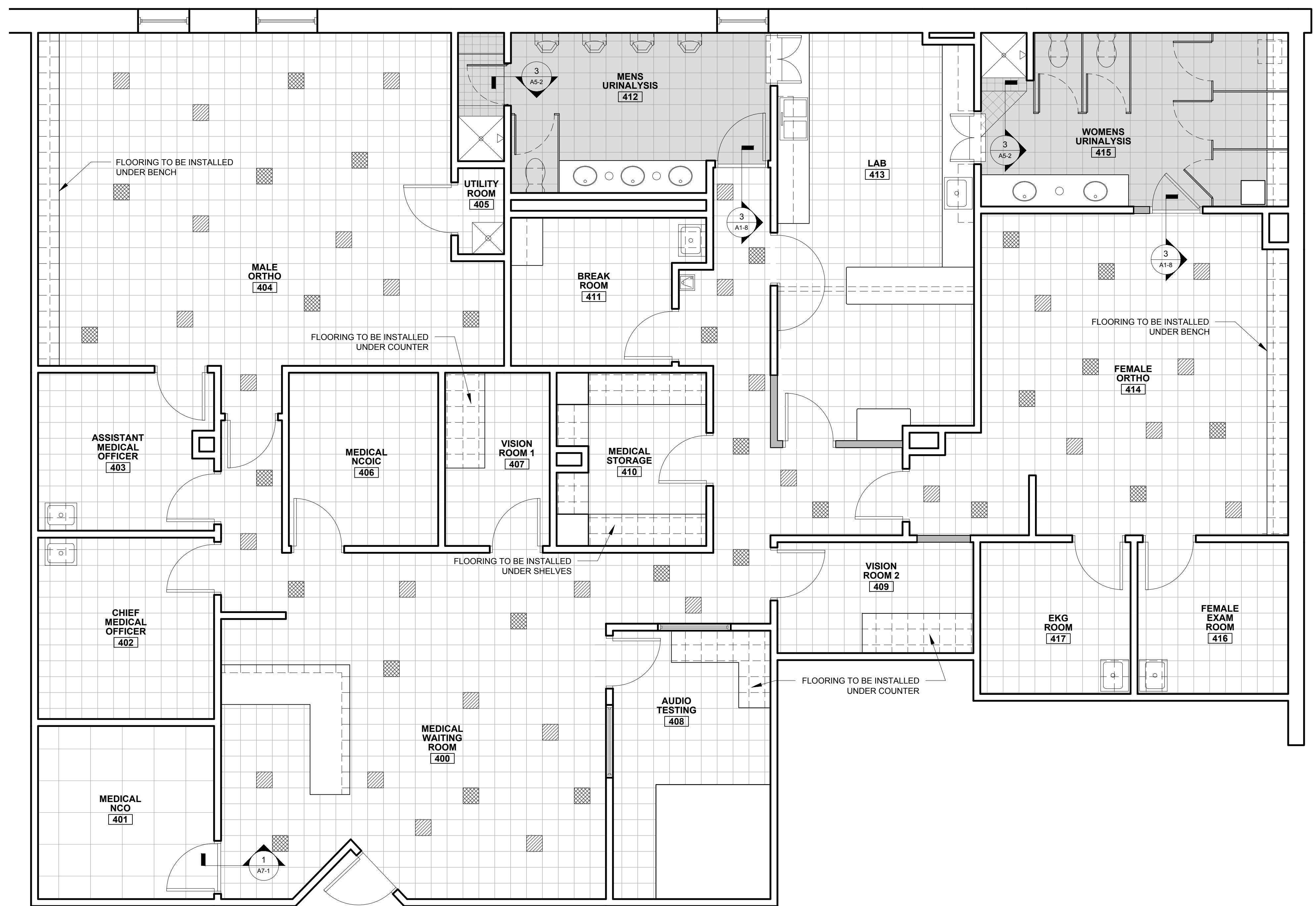
4 WOMEN'S LOCKER ROOM #302 AND MEN'S LOCKER ROOM #303
1/4" = 1'-0"



3 WOMEN'S LAV. #310 AND MEN'S LAV. #312
1/4" = 1'-0"



2 LAVATORY #802
1/4" = 1'-0"



1 MEDICAL FLOORING LAYOUT
1/4" = 1'-0"

FLOORING NOTES

- 1.) AT LOCATIONS OF EXISTING VCT INDICATED TO BE REMOVED ON CONCRETE SUBSTRATE, MECHANICALLY REMOVE TILE AND ALL ADHESIVE MATERIALS DOWN TO CONCRETE BASE UTILIZE DUSTLESS MACHINE.
- 2.) GRIND CONCRETE HIGH POINTS AND RIDGES AS REQUIRED TO MINIMIZE FLOOR UNDULATIONS
- 3.) APPLY SELF LEVELING MATERIAL TO CLEAN CONCRETE SURFACE (MAPEI ULTRAPAN M20 PLUS) TO ENTIRE FLOOR SURFACE TO PROVIDE SMOOTH SURFACE. INSTALL PER MANUFACTURERS INSTRUCTIONS
- 4.) AT DOOR THRESHOLDS TO ROOMS WITH CARPET TILE ADJACENT TO NEW SELF LEVELED FLOORS, REMOVE FIRST COURSE OF CARPET TILE FEATHER (ARDEX FEATHERING MATERIAL) FROM SELF LEVELING INTO ROOM AND REINSTALL CARPET TILE. INSTALL NEW VINYL THRESHOLDS
- 5.) ALL LOCATIONS OF EXISTING VCT INDICATED TO BE REMOVED ON WOOD SUBSTRATE. REMOVE TILE AND ADHESIVES. REPLACE AND REPAIR ANY DAMAGED SUBFLOOR. SKIM UNEVEN SURFACES WITH SELF LEVELING COMPOUND. INSTALL NEW 1/4" LAYER OF PLYWOOD. PREP FOR NEW VCT FLOOR TILE
- 6.) PROVIDE NEW TRANSITIONS AT ALL DOORWAY LOCATIONS OF NEW FLOORING AND EXISTING FLOORING.

FLOORING LEGEND

SYMBOL	DESCRIPTION
[White square]	VCT COLOR #1
[Diagonal lines /]	VCT COLOR #2
[Diagonal lines \]	VCT COLOR #3
[Grey square]	12"X12" CERAMIC TILE
[Small grey square]	6"X6" CERAMIC TILE
[Cross-hatch pattern]	CARPET TILE