



© 2014 RYAN SENATORE ARCHITECTURE

MEPS
510 CONGRESS STREET
PORTLAND, MAINE



CONSULTANTS:

REVISIONS:

DATE: OCTOBER 30, 2014

PROJECT No.

DRAWN BY: RRT / RJS

CHECKED BY: RJS

SCALE: AS NOTED

SHEET TITLE:
MEDICAL REFLECTED CEILING PLAN

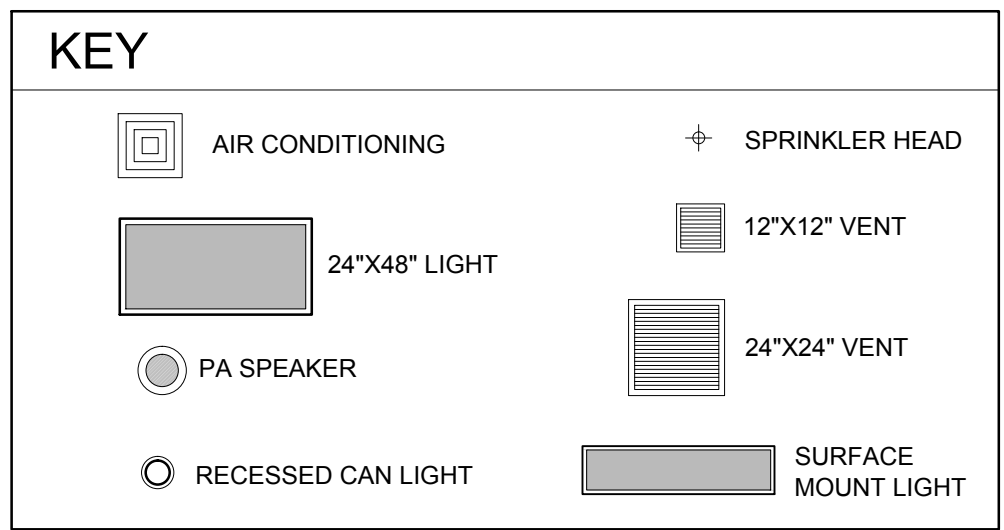
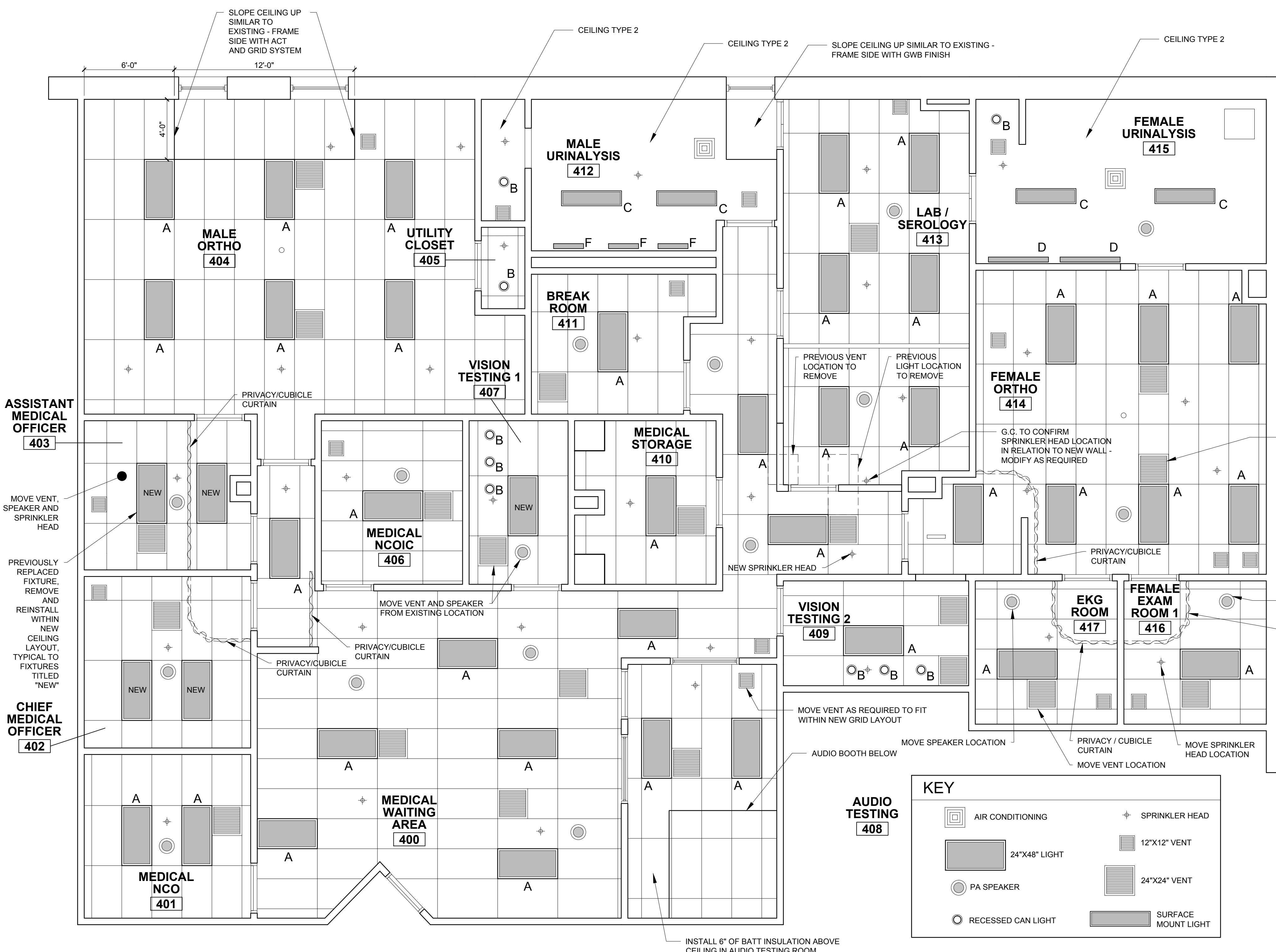
A1-4

REFLECTED CEILING PLAN NOTES

- LIGHTING IS SHOWN FOR FIXTURE TYPE AND LOCATION PURPOSES ONLY. GENERAL CONTRACTOR IS TO PROVIDE STAMPED ELECTRICAL DRAWINGS FROM AN ELECTRICAL ENGINEER (DESIGN - BUILD) FORMAT FOR NEW AND RENOVATION ELECTRICAL WORK TO OBTAIN NECESSARY PERMITS. ALL ELECTRICAL, AND ANY FIRE ALARM WORK REQUIRED IS TO BE DONE IN ACCORDANCE WITH THE MOST CURRENT CODES.
- MECHANICAL GRILLES, VENTS AND LOUVERS ARE SHOWN FOR LOCATION PURPOSES ONLY. GENERAL CONTRACTOR IS TO PROVIDE STAMPED MECHANICAL DRAWINGS FROM AN ELECTRICAL ENGINEER (DESIGN - BUILD) FORMAT FOR NEW AND RENOVATION MECHANICAL WORK TO OBTAIN NECESSARY PERMITS. ALL MECHANICAL WORK REQUIRED IS TO BE DONE IN ACCORDANCE WITH THE MOST CURRENT CODES. GENERAL CONTRACTOR TO RELOCATE ALL ELEMENTS TO ENSURE A FULLY FUNCTIONAL MECHANICAL SYSTEM
- AT MODIFIED WALL LOCATIONS AND RELOCATED SPRINKLER HEADS AS INDICATED ON DRAWINGS, THE FIRE SPRINKLER SYSTEM SHALL BE MODIFIED AND ADJUSTED AS REQUIRED BY CODE. GENERAL CONTRACTOR IS TO PROVIDE STAMPED SPRINKLER DRAWINGS FROM A FIRE PROTECTION ENGINEER (DESIGN - BUILD) FORMAT FOR THE WORK TO OBTAIN NECESSARY PERMITS. ALL FIRE SPRINKLER SYSTEM WORK REQUIRED IS TO BE DONE IN ACCORDANCE WITH THE MOST CURRENT CODES.
- AT LOCATIONS OF REPLACED CEILINGS, INSTALL NEW CEILING AT SAME HEIGHT ABOVE FINISHED FLOOR AS EXISTING CEILING
- ALL CEILINGS TO BE CEILING (TYPE 1) UNLESS OTHERWISE NOTED
- AT CEILINGS TO RECEIVE NEW GWB CEILING PROVIDE BLOCKING AND FRAMING FOR ALL NEW OR RELOCATED CEILING ELEMENTS PRIOR TO INSTALLATION OF GWB
- AT CEILINGS INDICATED TO BE REPLACED ALL CEILING MOUNTED MECHANICAL GRILLES LOUVERS, ETC. ARE TO BE REPLACED WITH NEW GRILLES, LOUVERS, ETC. ALL OTHER MECHANICAL GRILLES AT CEILING THROUGHOUT THE FACILITY ARE TO BE CLEANED AND PAINTED.

LIGHT FIXTURE SCHEDULE

SYMBOL	TAG	DESCRIPTION	MANUFACTURER	MODEL NUMBER
	A	2'X4' RECESSED	H.E. WILLIAMS, INC.	HET-G-S24-232-A-EBS2'OS'S50-UNV (4100K LAMPS - MATCH EXISTING)
	B	4\"/>	H.E. WILLIAMS, INC.	LED45-OS/30-840-CS-ACIAL-EDD'OS-120
	C	1X4 SURFACE	H.E. WILLIAMS, INC.	11-4-232-F-A12125-EB2-UNV (3500K LAMPS)
	D	WALL MOUNT	H.E. WILLIAMS, INC.	WMA-4-232-AF-EB2-UNV (3500K LAMPS)
	E	WALL MOUNT	H.E. WILLIAMS, INC.	WMA-3-225-AF-EB2-UNV (3500K LAMPS)
	F	WALL MOUNT	H.E. WILLIAMS, INC.	WMA-2-217-AF-EB2-UNV (3500K LAMPS)



1 MEDICAL REFLECTED CEILING PLAN
1/4" = 1'-0"