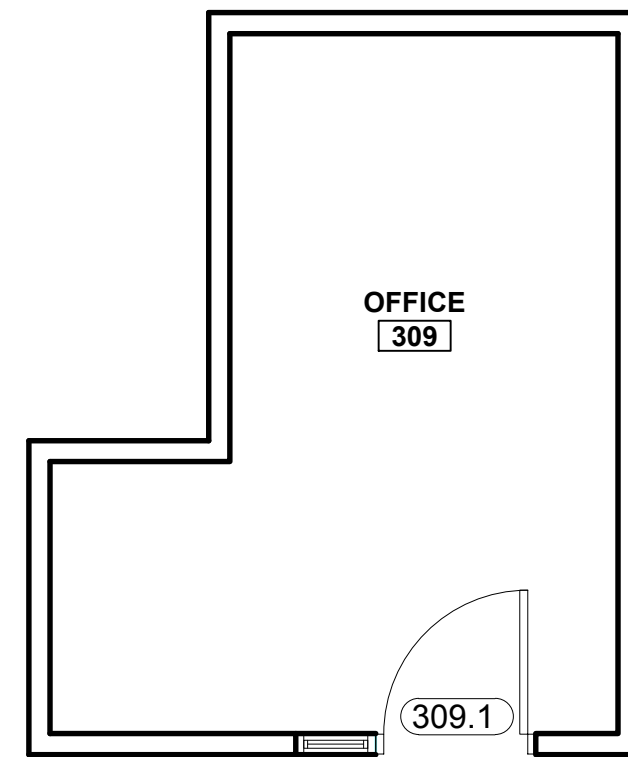


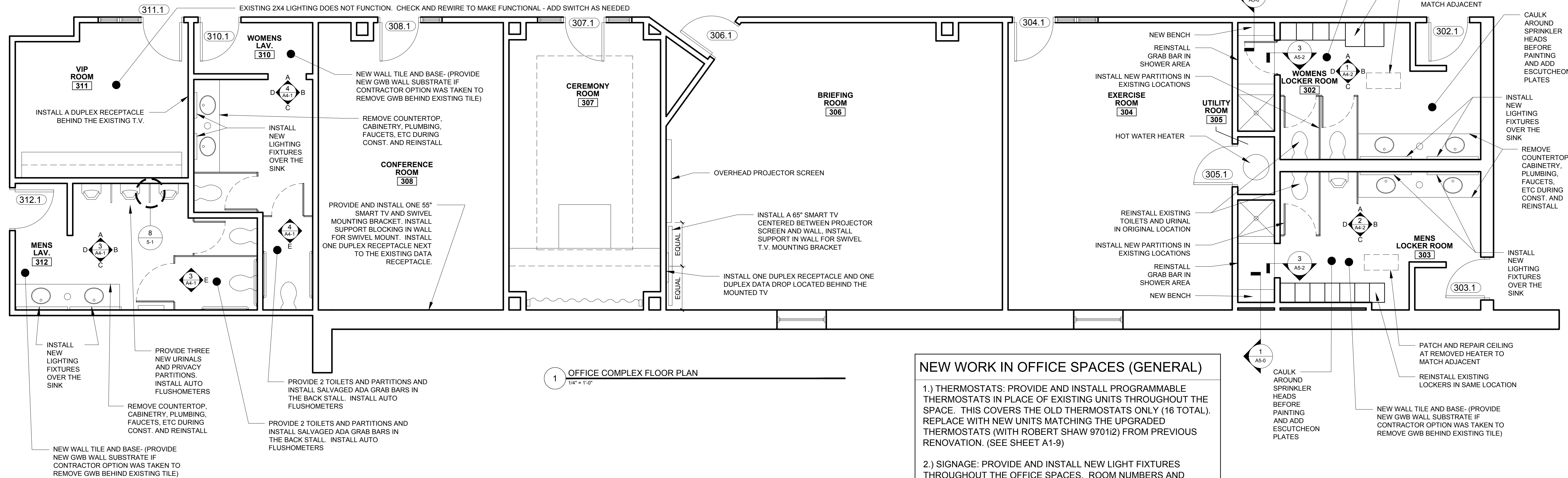
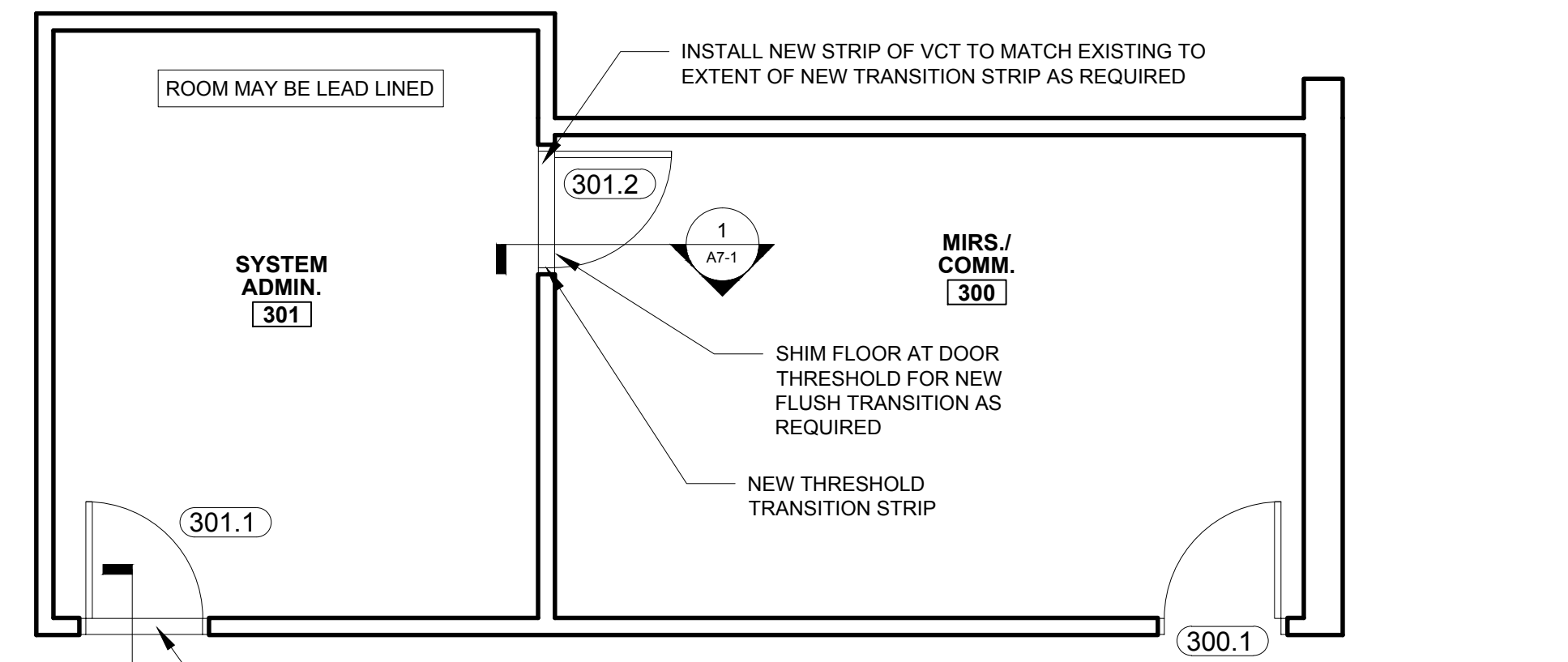
PLAN NOTES

- 1.) REMOVE AND REINSTALL ALL WALL MOUNTED ELEMENTS AS REQUIRED TO INSTALL NEW WALL COVERINGS, INCLUDING BUT NOT LIMITED TO (SINKS, ELECTRICAL COVER PLATES, FIRE ALARM DEVICE COVER PLATES) (SHALL BE REINSTALLED IN ACCORDANCE WITH NFPA 72), SHELVEING, WALL HOOKS, ETC.)
- 2.) PREPARE ALL WALL AND FLOOR SURFACES TO RECEIVE NEW FINISHES PER FINISH MANUFACTURERS INSTALLATION INSTRUCTIONS. REMOVE AND REPLACE ALL DAMAGED FLOOR SHEATHING FOUND UPON REMOVAL OF EXISTING FLOORING
- 3.) FIRE STOPPING SHALL CONSIST OF UL LISTED ASSEMBLIES AND BE INSTALLED PER CODE
- 4.) NOTHING, INCLUDING T.V.'S SHALL OBSTRUCT FIRE AND LIFE SAFETY COMPONENTS



GENERAL CONSTRUCTION NOTES

1. EXISTING COUNTERTOPS, SINKS AND FAUCETS ARE NEW IN ROOMS: 302, 303, 310, 312, 412, AND 415. REMOVE DURING CONSTRUCTION AND REINSTALL AFTER WORK
2. NEW DOORS SHALL MATCH DOOR SPECIES AND FINISH OF THE CEREMONY ROOM (#307) INCLUDING DOOR HARDWARE



1 OFFICE COMPLEX FLOOR PLAN
1/4" = 1'-0"

NEW WORK IN OFFICE SPACES (GENERAL)

- 1.) THERMOSTATS: PROVIDE AND INSTALL PROGRAMMABLE THERMOSTATS IN PLACE OF EXISTING UNITS THROUGHOUT THE SPACE. THIS COVERS THE OLD THERMOSTATS ONLY (16 TOTAL). REPLACE WITH NEW UNITS MATCHING THE UPGRADED THERMOSTATS (WITH ROBERT SHAW 970112) FROM PREVIOUS RENOVATION. (SEE SHEET A1-9)
- 2.) SIGNAGE: PROVIDE AND INSTALL NEW LIGHT FIXTURES THROUGHOUT THE OFFICE SPACES. ROOM NUMBERS AND NOMENCLATURE PROVIDED WITH THE SPEC. (SEE SHEET A7-1)
- 3.) LIGHT FIXTURES: PROVIDE AND INSTALL NEW LIGHT FIXTURES THROUGHOUT THE OFFICE SPACES. DURING THE PREVIOUS RENOVATION, PARTIAL LIGHTING FIXTURES WERE INSTALLED. THE MEPS IS LOOKING FOR UNIFORMITY THROUGHOUT THE FACILITY. APPROXIMATELY 100 - 2'X4' FIXTURES AND 15 - 2'X2' FIXTURES. (SEE SHEET A1-6)
- 4.) PUBLIC ADDRESS SYSTEM: PROVIDE AND INSTALL AN UPGRADED PUBLIC ADDRESS SYSTEM. WORK TO INCLUDE AN AMPLIFIER, SPEAKERS, MICROPHONE, AND VOLUME CONTROL DEVICES IN ALL SPACES. SYSTEM SHALL HAVE SIX SEPARATE ZONES. (A SPEC WILL BE PROVIDED).
 - A.) SPEAKERS: CEILING MOUNTED 8" CONE TYPE SIMILAR OR EQUAL TO THE DUKANE MODEL 5A607.
 - B.) VOLUME CONTROL: 10 WATT AREA SPEAKER CONTROL SIMILAR OR EQUAL TO THE DUKANE MODEL 9A1550B.
 - C.) AMPLIFIERS: PROVIDE MIXER / AMPLIFIER AS REQUIRED. SIMILAR OR EQUAL TO DUKANE MODELS 1A1635, 1A1660, 1A1725 (SEE SHEET A7-2)

**SEE DESIGN GUIDE FOR DETAILS

© 2014 RYAN SENATORE ARCHITECTURE

MEPS
510 CONGRESS STREET
PORTLAND, MAINE

RSA
RYAN SENATORE
ARCHITECTURE
565 CONGRESS STREET
SUITE 304
PORTLAND, MAINE 04101
207.650.6414
senatorearchitecture.com

CONSULTANTS:

REVISIONS:

DATE: AUGUST 29, 2014

PROJECT No.

DRAWN BY: RRT / RJS

CHECKED BY: RJS

SCALE: AS NOTED

SHEET TITLE:
OFFICE
COMPLEX
FLOOR PLAN

A1-2